



North Enclave



GM
inFinite

HOME FOR ALL



AB GHAR SAB KO!



GM Infinite Dwelling (India) Pvt. Ltd. is pioneer in the development of innovative and fastest selling residential flats in Bangalore, spreading richness everywhere, with creativity in abundance. We, at GM Infinite believe to make innovation a tradition to succeed as an organization.

At GM infinite we perform and deliver with experience, expertise and efficiency providing luxurious life style living spaces. At GM infinite we believe in customer centric approach.

We have created land mark unique projects like E-City Town Phase 1 & 2 through best architectural practices, stylish Spanish design with modern facilities at affordable prices. The talk of the town E-City Town project has won many awards and accolades achieving excellence with Infinite boundary.

One of the tallest in south Bangalore, The Global Techies Town project offers vast greenery, landscape gardens and over 100 amenities 1 st of its kind in Bangalore spread over Iconic Club-house 60,000 Sft. It has something to offer for all age groups, you'll never run out of new experiences.

We are the first in Bangalore to launch the project GM Ambitious Enclave Under the Pradhan Mantri Awas Yojana (PMAY) scheme, to fulfil the desire of every common man to own a home. With this project, we truly follow the caption, AB GHAR SABKO!

At GM infinite we just don't make homes, we create luxury of space with perfect blend of convenience and comfort. The company has become synonymous with exceptional quality, world class architecture and on time delivery. GM Infinite is now poised to expand further, with some of the largest properties in Bangalore slated for launch.



HOMES FOR THOSE WHO CREATE SUCCESS, NOT INHERIT IT

Presenting
GM INFINITE NORTH ENCLAVE
A PMAY Initiative

Thanisandra Main Road

GM Infinite's brand-new project has been launched under Pradhan Mantri Awas Yojana (PMAY), a visionary scheme that provides affordable housing across 305 towns and cities in India. GM Infinite North Enclave is large in its scale and benefits, transforming affordable housing into aspirational living spaces. This is GM Infinite's promise – to create 'quality housing for everyone' – AB GHAR SABKO!

Sprawled across around 4 acres in Thanisandra main road, the enclave houses 670 apartments in 1, 2 and 3 BHK formats. The 22 floor is surrounded by manicured lawns and gardens filled with fragrant flowers and aromatic herbs. Play courts and social spaces invite people of all ages to enjoy Bangalore's cool weather. It's having a mall with shopping complex.

Modern design aesthetics have been aligned with the traditional principles of Vastu to create homes and common areas that are brightened by natural light and cooled by natural ventilation for Happy Living. The property combines world-class architecture and amenities to result in living spaces that match the lofty ambitions of those who call it home.



MASTER PLAN

TYPICAL FLOOR PAN



LEGEND

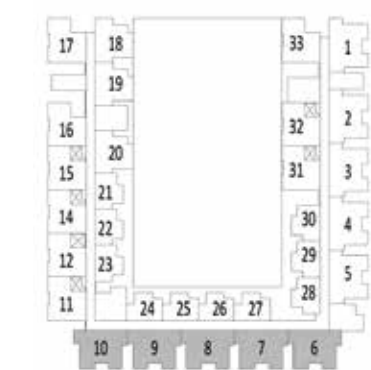
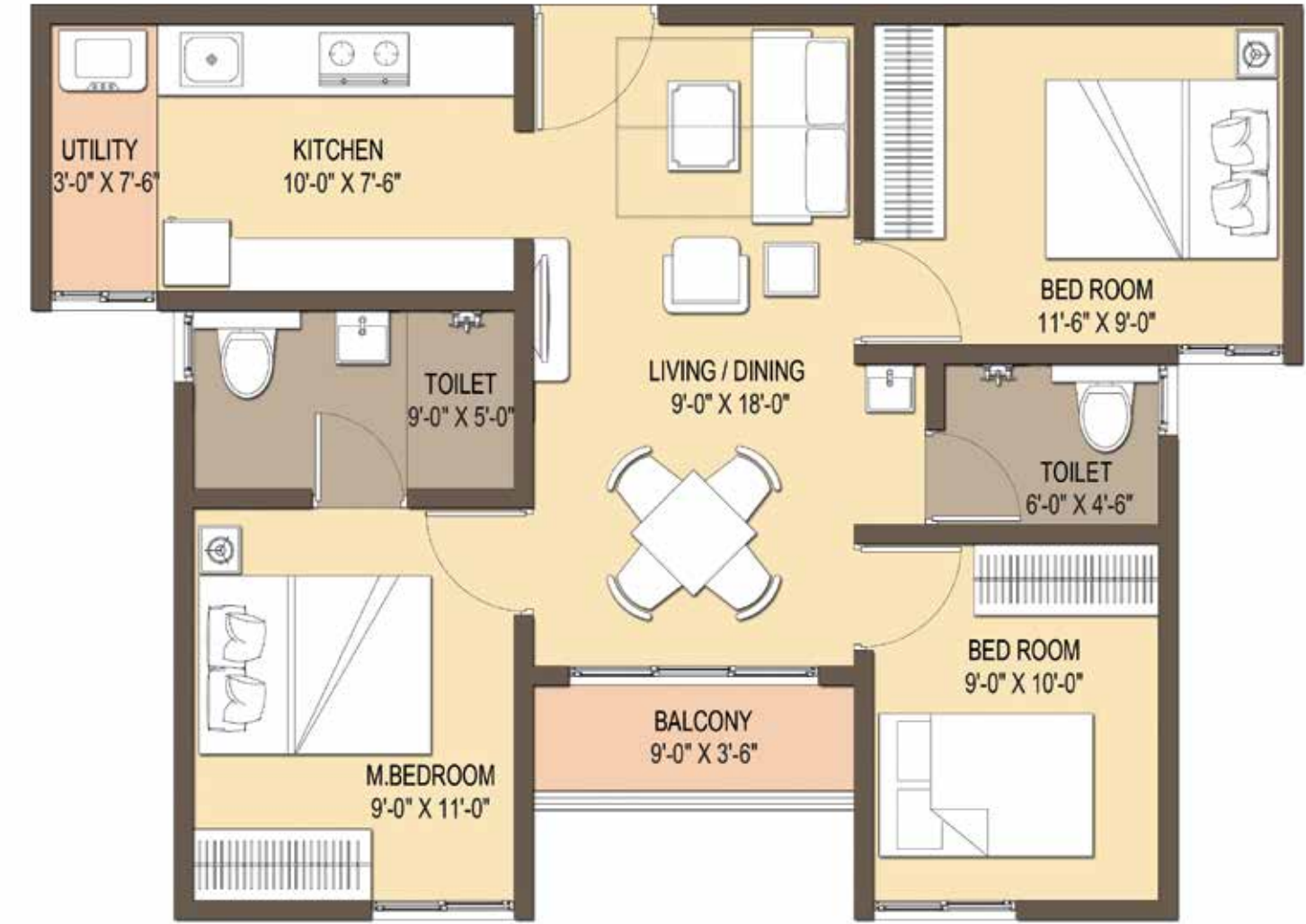
- | | | |
|-------------------------|-------------------------------|--------------------|
| 1. ENTRY / EXIT | 8. TENNIS COURT | CLUBHOUSE |
| 2. SENIOR CITIZEN PLAZA | 9. MOUND | GM MALL |
| 3. AMPHITHEATER | 10. SAND PIT / KIDS PLAY AREA | MULTI GYM |
| 4. YOGA COURT | 11. LABYRINTH | MULTI-PURPOSE HALL |
| 5. GREAT LAWN | 12. SWIMMING POOL | TABLE TENNIS |
| 6. LAWN | 13. COCONUT GROVE | CARROM |
| 7. JUMBO CHESS | 14. ADULT HAMMOCK BLISS | CHESS |





3 BHK FLOOR PLAN

FLAT NUMBER	6, 7, 8, 9, 10
SALE AREA	990 Sq. ft
TYPE	3 NORTH FACING (3 BHK)





3 BHK FLOOR PLAN

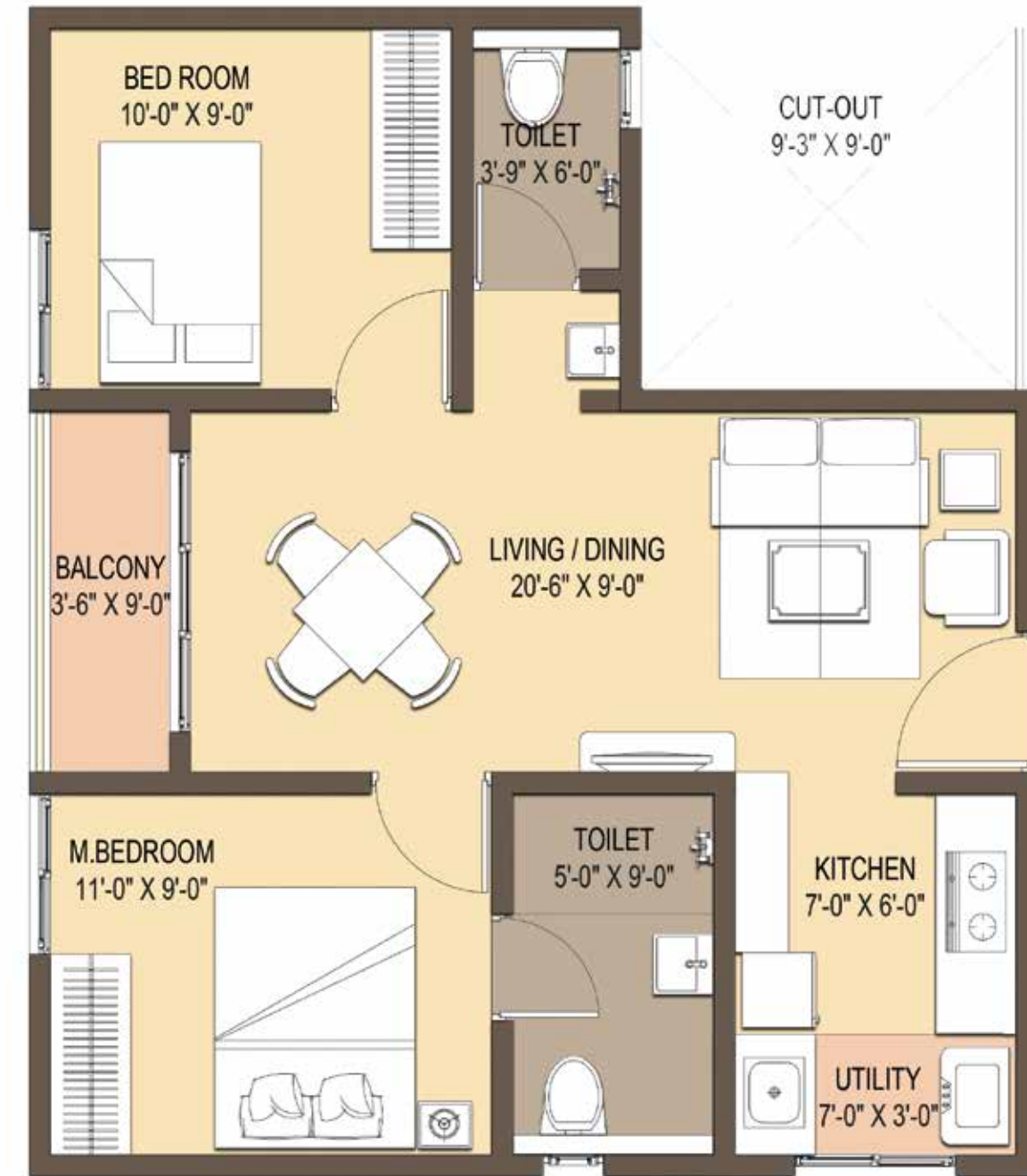
FLAT NUMBER	1, 2, 3, 4, 5
SALE AREA	990 Sq. ft
TYPE	3 WEST FACING (3 BHK)





2 BHK FLOOR PLAN

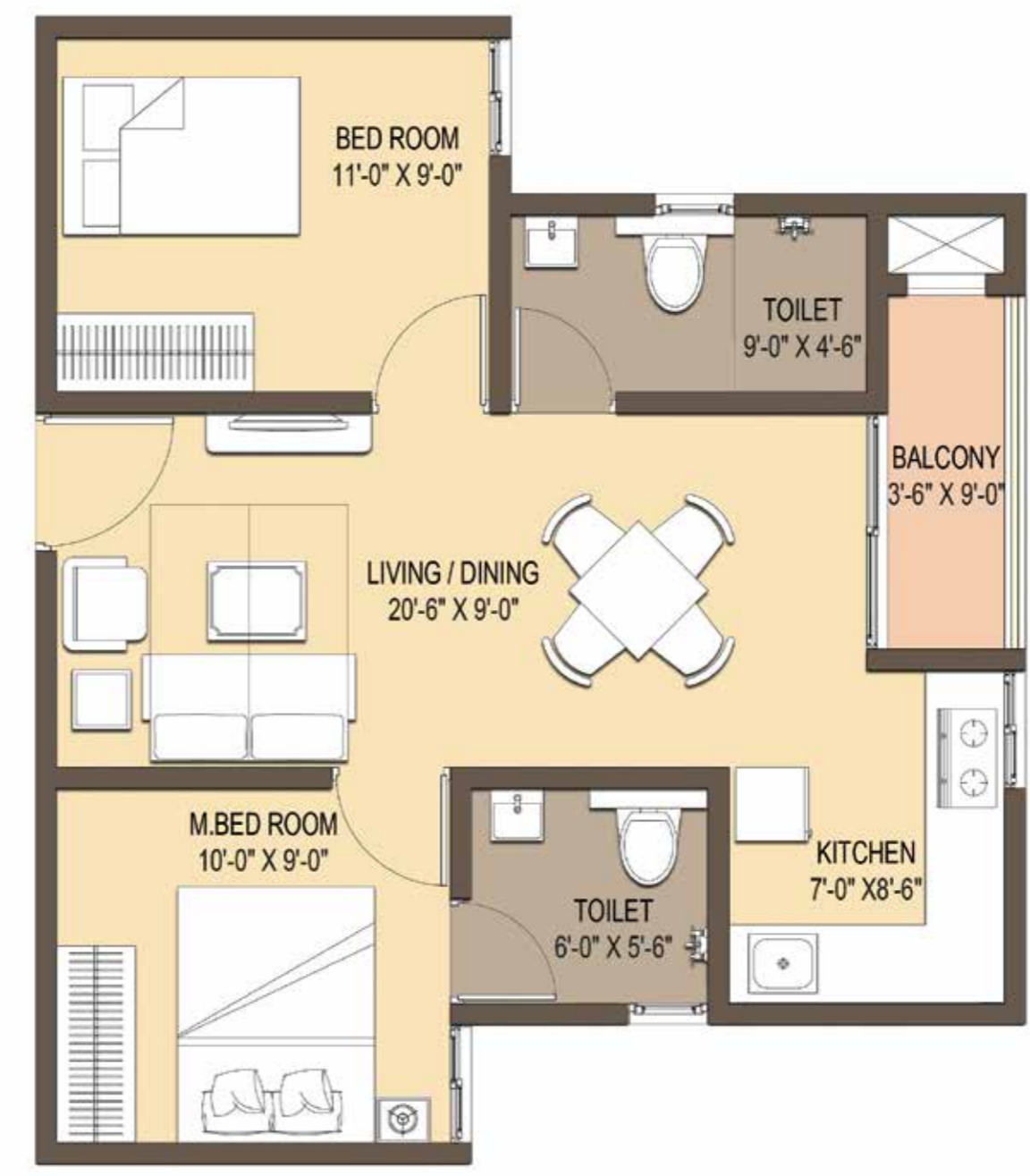
FLAT NUMBER	11, 12, 14, 15, 16, 17, 31, 32, 33
SALE AREA	825 Sq. ft
TYPE 2 EAST FACING (2 BHK)	





2 BHK FLOOR PLAN

FLAT NUMBER	18, 19, 20
SALE AREA	800 Sq. ft
TYPE	2 WEST FACING (2 BHK)





1 BHK FLOOR PLAN

FLAT NUMBER	28, 29, 30
SALE AREA	500 Sq. ft
TYPE 1 EAST FACING (1 BHK)	





1 BHK FLOOR PLAN

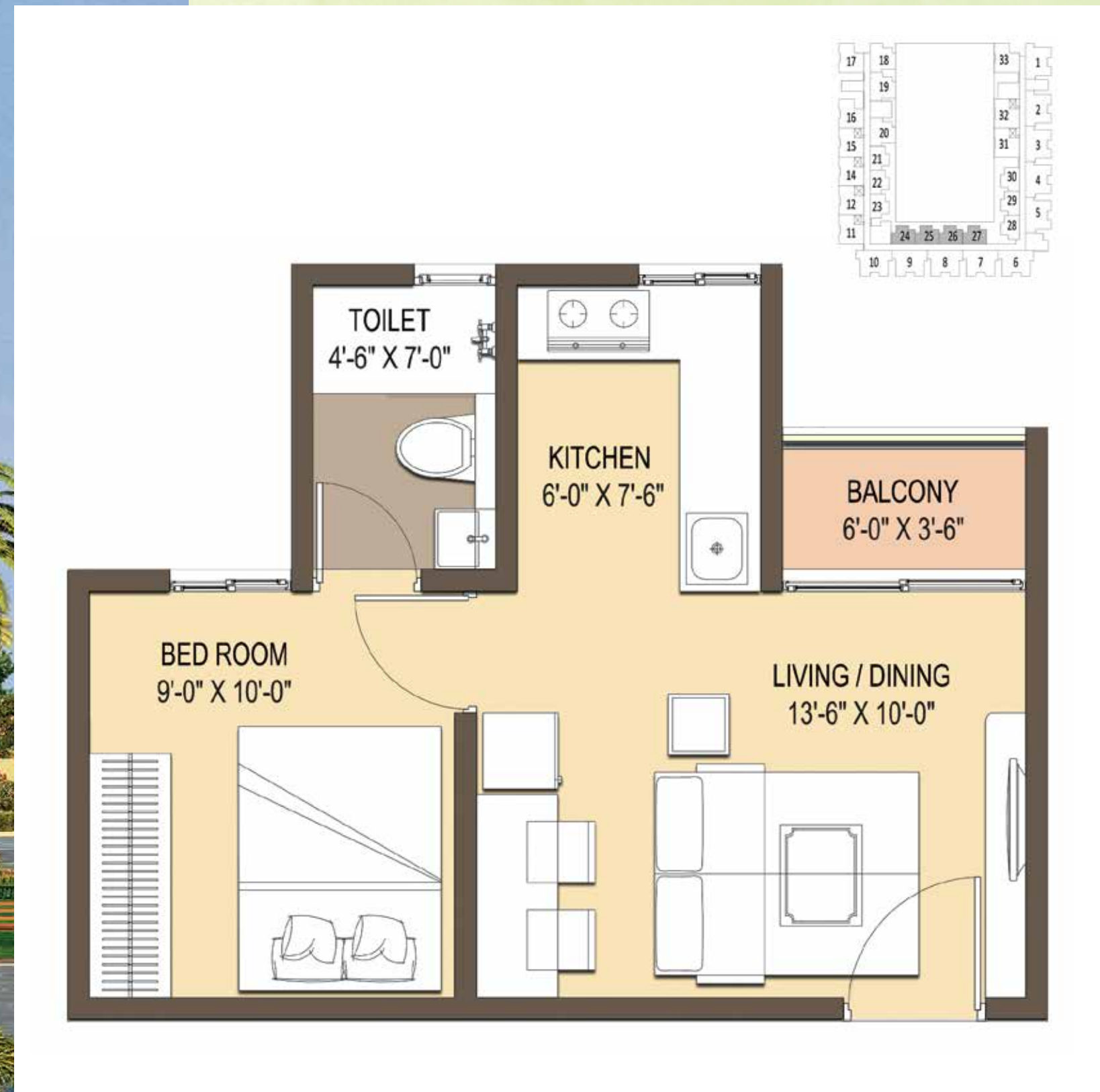
FLAT NUMBER	21, 22, 23
SALE AREA	500 Sq. ft
TYPE 1 WEST FACING (1 BHK)	





1 BHK FLOOR PLAN

FLAT NUMBER	24, 25, 26, 27
SALE AREA	500 Sq. ft
TYPE 1 SOUTH FACING (1 BHK)	



Specifications

STRUCTURE

- RCC framed structure for Basements & Stilt.
- Aluminium System Formwork for Typical Floors with RCC Wall & Slab.

FLOORING

- Vitrified flooring for Living, Dining, Kitchen & Bedrooms
- Anti-skid ceramic tiles for Balconies & Toilets

KITCHEN

- Kitchen Platform with black granite top
- Stainless steel sink
- Kitchen dado wall tiles up to 2' height
- Point for water purifier
- Points for Washing machine in utility area

DOORS & WINDOWS

- External door - Hard wood frames & Masonite doors with architrave, polished on both sides with premium fittings
- Internal doors - Hard wood frames & flush doors with premium fittings
- Powder coated aluminium windows

PAINTING

- All interior walls -Emulsion
- Exterior painting with weather proof acrylic paint
- All MS Grills and Railings with enamel paint

BATHROOMS

- Wall Mounted EWC, Washbasin
- Chromium plated fittings
- Dado wall tiles up to false ceiling
- Health faucets for all toilets
- Provision for geyser for Master Bedroom Toilet

ELECTRICAL

- Concealed electrical copper wiring with circuit breakers
- TV & Telephone points in living & Master bedroom
- Premium quality modular switches in all rooms
- Power back-up inside the flats for lighting points only
- Power back-up for lifts, pumps and common areas

PARKING

- Covered car parking at basement & Stilt level

WATER TREATMENT PLANT

- Fully Treated Water through an Exclusive Water Treatment Plant within the project.
- Rain Water Harvesting Scheme would be provided for Recharging the Ground Water Level.

SEWAGE TREATMENT PLANT

- Sewage Effluent shall be treated and the treated water will be used for flushing and Landscaping.

FIRE PROTECTION SYSTEM

- Yard Hydrant, wet riser, sprinklers for car park & common area

Location Map





GM inFinite

AB GHAR SIRF  SE!