



Our Expertise. Your Joy.



**ONE OF INDIA'S**  
**TOP 3**  
**REAL ESTATE**  
**DEVELOPERS**

THE  
INCREDIBLE GROWTH STORY



Over 100 lacs sq. ft.  
of projects delivered



Over 130 lacs sq. ft.  
of area under development



Over Rs.100,000 CR.  
Estimated revenue potential



Rs. 3700 cr. Sales recorded  
in the financial year 2017-18



World class partners



Over 2200 acres  
of prime land bank

# 13 RESIDENTIAL PROJECTS

DELIVERED (7.3 mn sq.ft.)



STRUCTURE READY (1.2 mn sq.ft.)



UNDER – CONSTRUCTION (2.3 mn sq.ft.)



# 13 COMMERCIAL PROJECTS

DELIVERED (0.86 mn sq.ft.)



STRUCTURE READY (0.5 mn sq.ft.)



UNDER – CONSTRUCTION (3.5 mn sq.ft.)



# A MEMBER OF KEY ASSOCIATIONS AND TRADE BODIES

With a purpose  
Leading the Development Standards &  
Best Practices in the  
Real Estate Industry



# MAJOR TRANSACTIONS



₹440 CR.

2011



₹800 CR.

Largest Contract

2012

2014



₹350 CR.

Largest Transaction



₹1211 CR.

2015



2016



₹500 CR.



Launch

2018



TRUMP TOWERS, DELHI - NCR



**SAHARA**  
INDIA PARIWAR

SAHARA LAND PARCEL DEAL

**1211 Crore Deal**

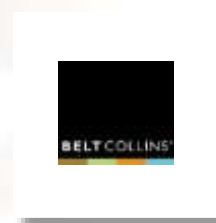
to acquire 185 acre land in

**Gurugram**



KEY ASSOCIATES  
WE ARE PROUD  
OF..

### ARCHITECTURE



### CONSTRUCTION



KEY ASSOCIATES  
WE ARE PROUD  
OF

## EQUIPMENTS

The logo for DURAVIT, featuring the brand name in a blue, sans-serif font.The logo for TOTO, featuring the brand name in a bold, black, sans-serif font with the tagline "Perfection by Design" underneath.The logo for DAIKIN, featuring the brand name in a blue, sans-serif font with a stylized blue and white graphic element to the left.The logo for MITSUBISHI, featuring a red three-pointed star symbol above the word "MITSUBISHI" in a black, sans-serif font.The logo for GROHE, featuring the brand name in a blue, sans-serif font with a stylized blue wave graphic below it.The logo for Miele, featuring the brand name in a white, sans-serif font inside a red rectangular box.

## BANKING & FINANCE

The logo for Piramal Housing Finance, featuring a stylized orange flame-like graphic to the left of the text "Piramal Housing Finance" in a black, sans-serif font.The logo for ADITYA BIRLA FINANCE, featuring a stylized red and gold sunburst graphic to the left of the text "ADITYA BIRLA FINANCE" in a black, sans-serif font.

## CONSULTING

The logo for BAIN & COMPANY, featuring a red circular graphic with a white triangle inside, above the text "BAIN & COMPANY" in a black, sans-serif font.The logo for EY, featuring a yellow and black graphic element above the text "EY Building a better working world" in a black, sans-serif font.

BEGINNING OF  
GURUGRAM



INADEQUATE  
INFRASTRUCTURE

**MEHRAULI  
GURGAON  
ROAD**

INTRODUCTION TO  
A MODERN  
WAY TO LIFE



SATURATED &  
EXPENSIVE

# GOLF COURSE ROAD

RISING GROWTH  
CORRIDOR

**OFF GOLF COURSE  
ROAD EXTN.**



14+ SCHOOLS

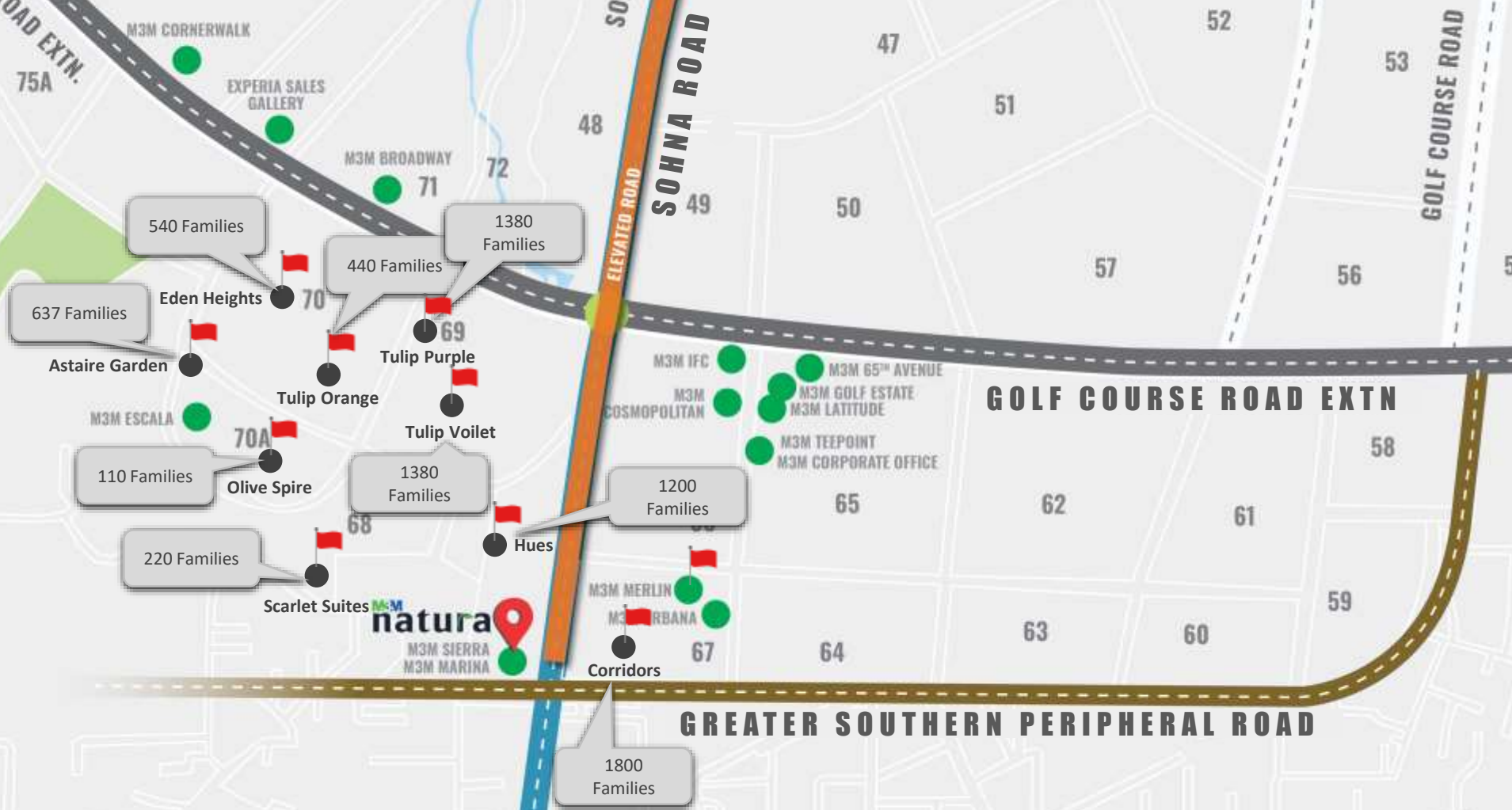
7+ HOSPITALS

18+ SOCIAL INFRASTRUCTURE

15+ COMMERCIAL

← JAIPUR

# RESIDENCES IN THE VICINITY



The M3M logo consists of the letters 'M3M' in a bold, sans-serif font. The first 'M' is green, the '3' is blue, and the second 'M' is green.The word 'natura' is written in a large, dark blue, lowercase sans-serif font. A green leaf-like graphic element is integrated into the letter 'a'.

SECTOR 68, GURUGRAM

A Marvel Rising  
in Sec 68, Gurugram





**YOUR HOME SET IN THE  
LAP OF NATURE**



**AN ENLIVENING  
EXPERIENCE OF HARMONY**

# ELEVATED LIFESTYLE

Podium based amenities with underground parking



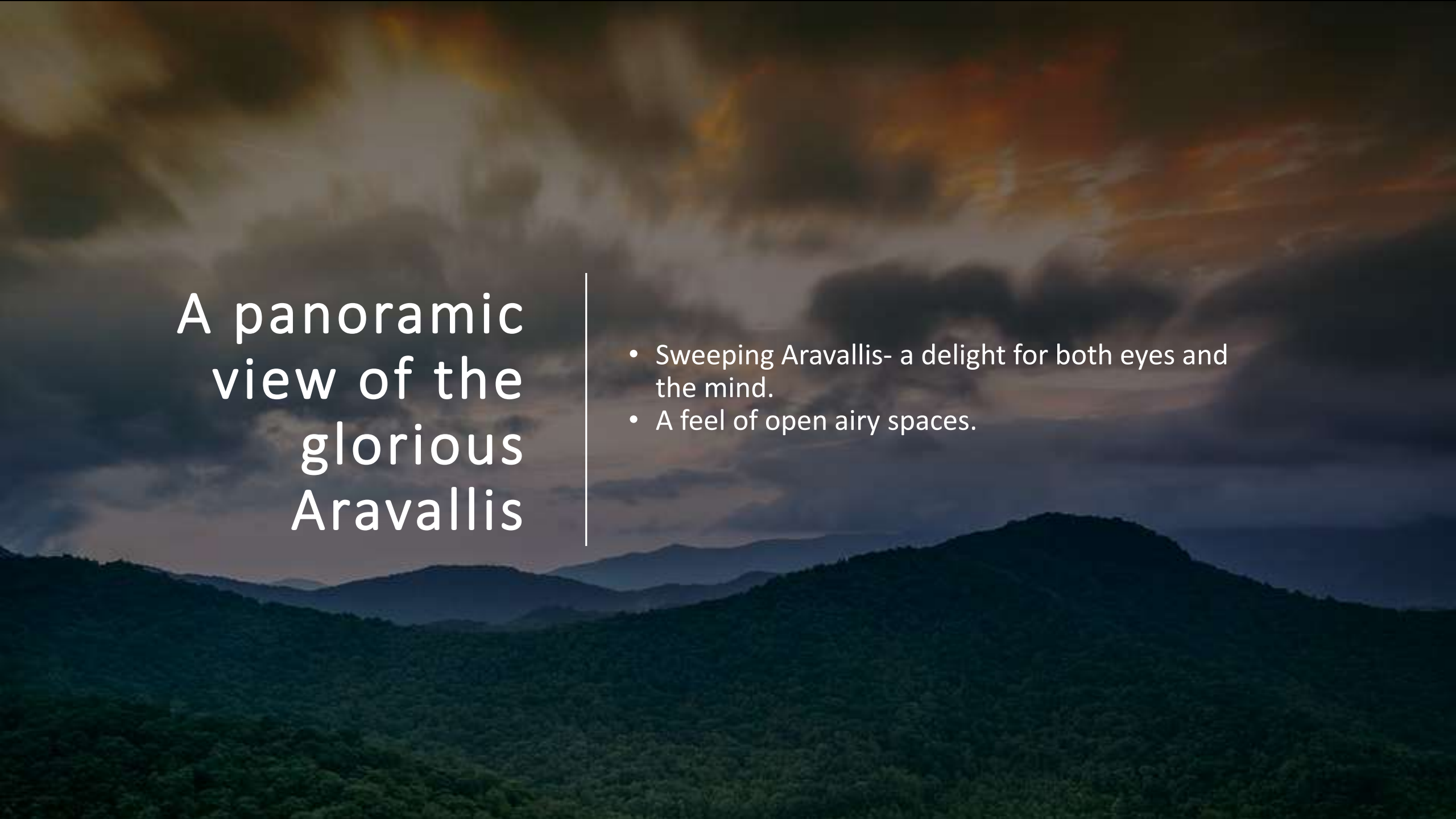


## A Site to be the

- Refreshing proximity to nature on one hand and an awe inspiring view of Gurugram's cityscape on the other.
- Prominently located, just off Sohna Road, on a 30 mt wide sector road.
- Easily accessible from Southern Periphery Road and NH8.

A person with long, straight, light-colored hair is seen from behind, sitting in a field of tall grass. The person is wearing a dark, long-sleeved top. The background shows a vast landscape with rolling hills under a sky with soft, warm colors, suggesting a sunset or sunrise. The overall mood is peaceful and contemplative.

The Essence of Nature,  
Elevated to a lifestyle



# A panoramic view of the glorious Aravallis

- Sweeping Aravallis- a delight for both eyes and the mind.
- A feel of open airy spaces.



A beautiful  
shallow lake  
in the  
vicinity.


- Deck setting arrangement
- Alfresco dining
- Impressive flowing water structure at the entrance

A man and a child are walking away from the camera on a dirt path. The man is on the right, wearing a dark jacket and pants. The child is on the left, wearing a light-colored jacket and pants. They are walking towards a large body of water, possibly a lake or river, under a warm, golden sunset sky. The foreground is filled with trees and bushes, some with autumn-colored leaves. The overall mood is peaceful and serene.

A well  
crafted  
proximity to  
nature.

- Pristine landscapes, sprawling views and abundant greenery.
- A wholesome healthy life, for an elevated well being.



A photograph of a person's hand holding a monarch butterfly in a grassy field. The person is wearing a white shirt and dark shorts. The background is a soft-focus green field. The text is overlaid on the left side of the image.

# A tranquil existence at the centre of the City

- A haven, amidst peaceful natural surroundings.
- With the perks of an urban living- access and connectivity.

---

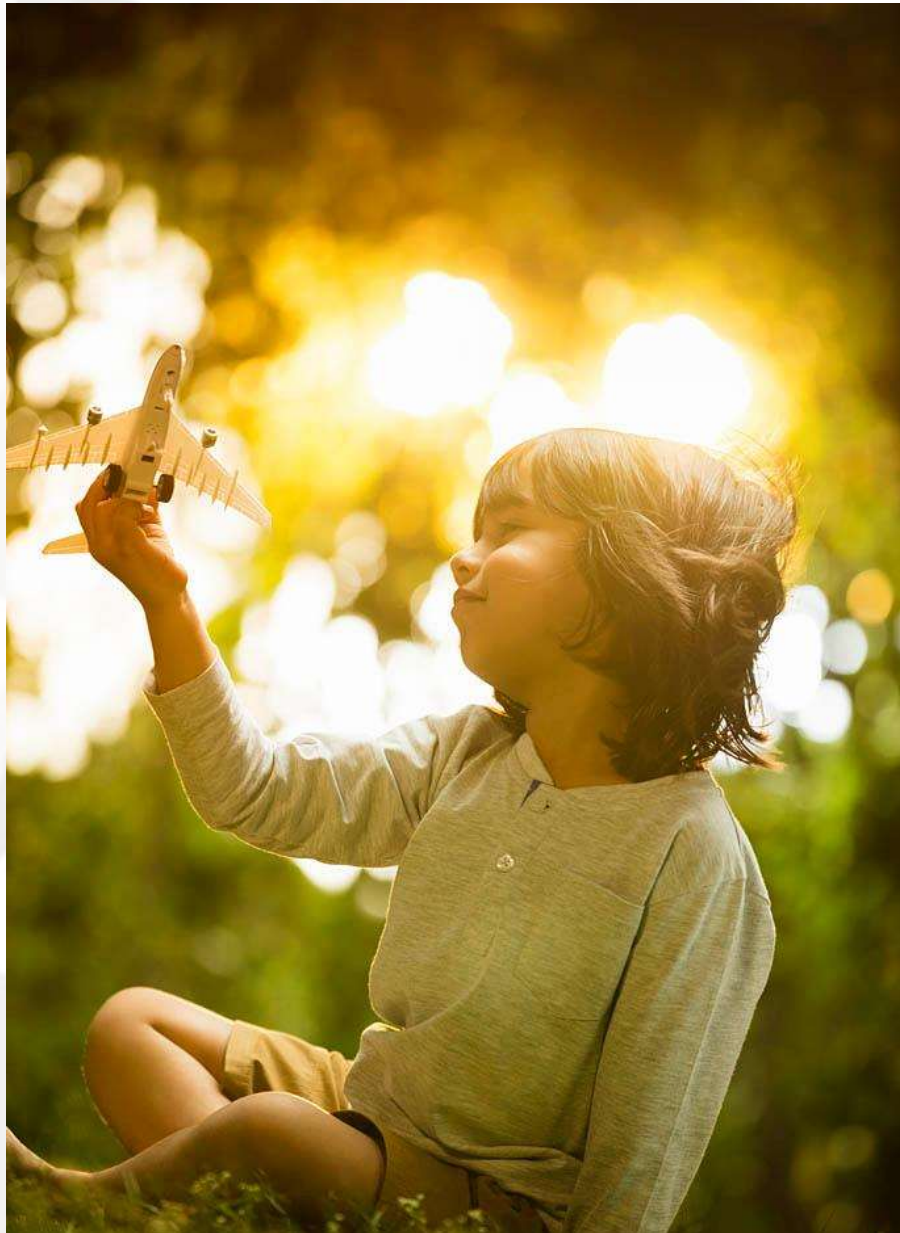
Inspired by Nature,  
For a Soulful Living



# Invigorating a Healthier way of Life.



- Premium fitness amenities that enable a fit lifestyle for all age groups
- Innovative Fitness Court
- State-of-art gym
- Swimming pool
- Youth Garden with serene natural settings
- open spaces perfect for a morning run or an evening walk
- Yoga Centre and meditation zone for a holistic well being



## Something For Everyone, Kids and Senior Citizens.

- A dedicated play area for kids- Tot Lots with sculpture court and many more activities.
- Trails for leisurely walks
- Palm Avenue and seating alcoves- the perfect ambience where elderlies would love spending time.
- Congregational lawns where seniors can plan engage and in activities.
- Amphitheatre for entertainment and performance programs.



# A Magnificent Club Experience

# The Club House

## Where Desires Come Alive



- The 669 sq mts. Club House at the Central Podium
- An indoor recreation zone with a range of leisure activities such as snooker, table tennis, etc.
- Cafe and Lounge with appetising cuisines serves as the perfect place to unwind with friends and family
- An outdoor Yacht Club, with Alfresco dining, by the lake for an incredible experience



Extravagantly  
Designed Interiors



GROUND FLOOR

## Café & Bistro

Enjoy a cup of coffee and rejuvenate





GROUND FLOOR

## Party Hall

A magnificent hall for grand celebrations



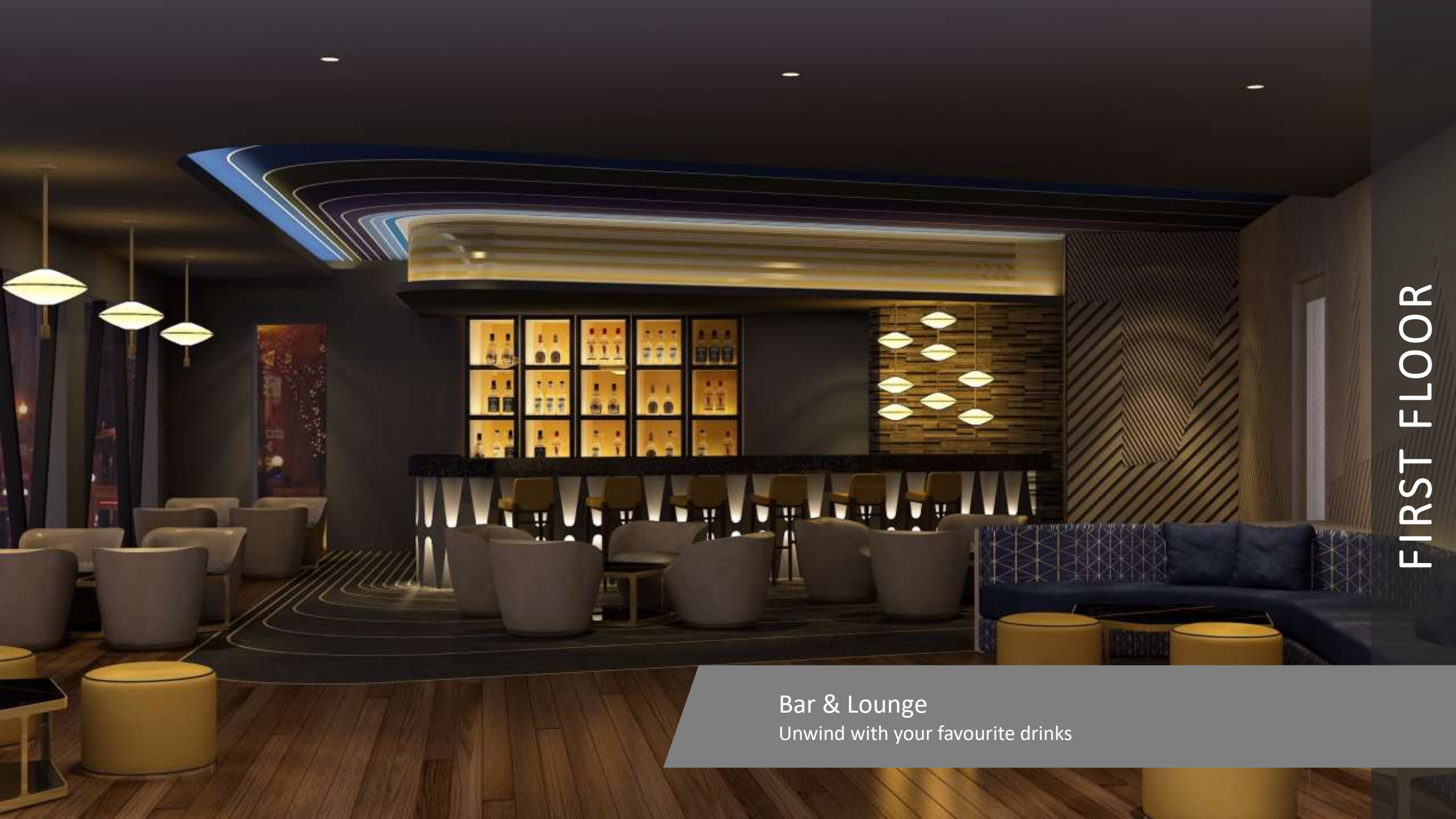
GROUND FLOOR

Double Height Lobby  
A beautiful lobby for a wonderful experience



### Kids Play Area

A fun zone for children's enjoyment



FIRST FLOOR

Bar & Lounge  
Unwind with your favourite drinks



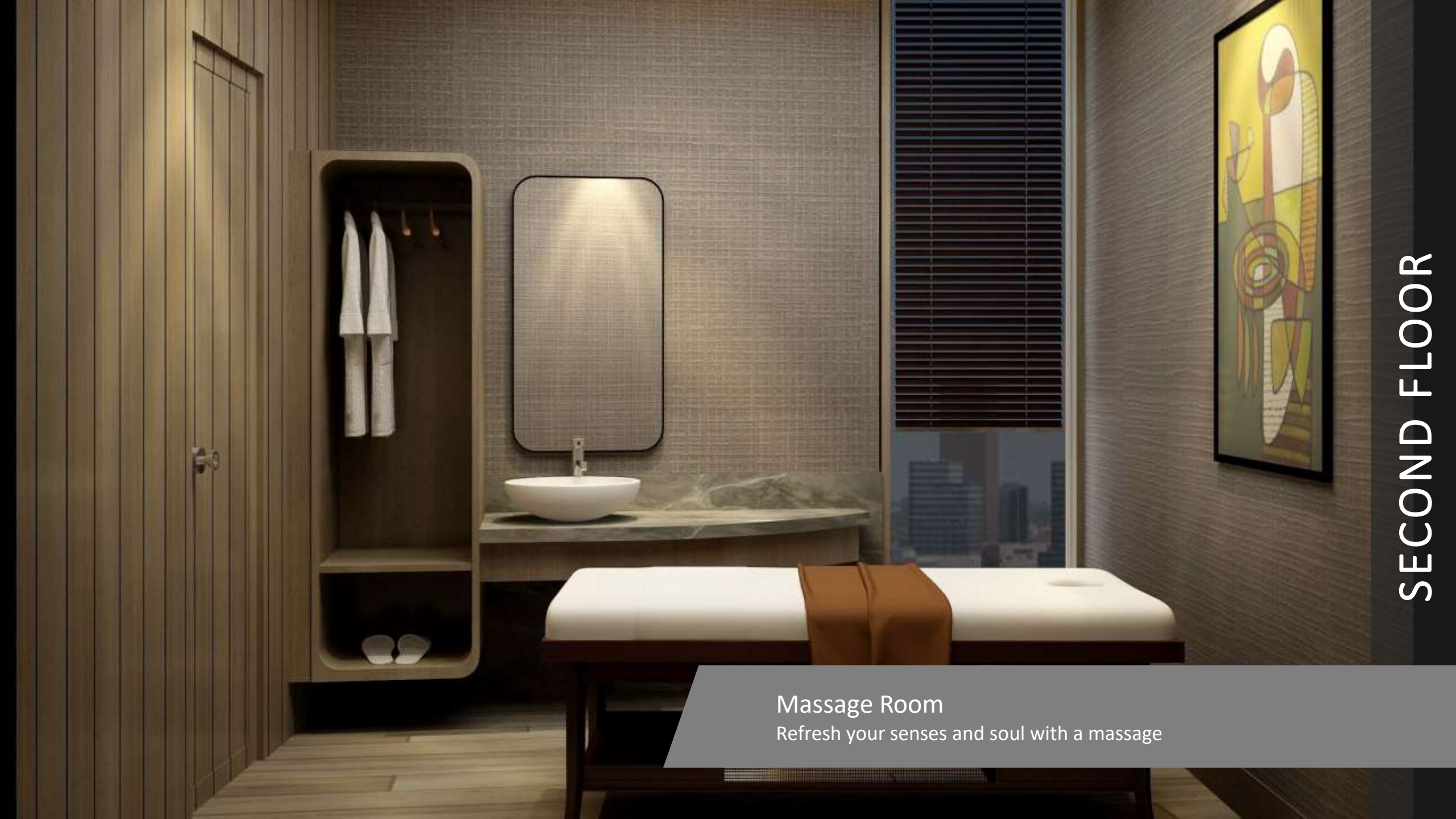
FIRST FLOOR

State-of-the-art Gym  
A well equipped gym for the health conscious



SECOND FLOOR

Salon  
Pamper yourself in our exclusive salon



**Massage Room**  
Refresh your senses and soul with a massage

# BREATH TAKING INTERIORS AND EXQUISITE DESIGNS

## Bedroom

**Walls:** Plastic emulsion with roller finish

**Floors:** Laminated wooden flooring

**Doors:** Hard wood door with flush shutter

**Windows:** UPVC/ Powder coated or anodized aluminium glazing

**Ceiling:** Plastic emulsion

# IMMACULATELY DETAILED TO DELIGHT

## Living Room

**Walls:** Plastic emulsion with roller finish

**Floors:** Vitrified tiles

**Doors:** Hard wood door with flush shutter

**Windows:** UPVC/ Powder coated or anodized aluminium glazing

**Ceiling:** Plastic emulsion

## Kitchens

**Walls:** 2'high ceramic tiles above counter balance Oil Bound distemper paint

**Floors:** Anti skid ceramic flooring.

**Doors:** Hard wood door with flush shutter

**Windows:** UPVC/Powder coating or anodized aluminium glazing

**Ceilings:** Oil bound distemper paint

## Toilets

•**Walls:** Combination of ceramic tiles and oil bound distemper paint

•**Floors:** Anti skid ceramic flooring.

•**Doors:** Hard wood door with flush shutter

•**Windows:** UPVC/Powder coating or anodized aluminium glazing

•**Ceilings:** Oil bound distemper paint

•**Others:** Granite/Marble counter with white sanitary fixtures and CP fittings



AN EASY FIRST STEP



**BOOK A HOME AT JUST**  
**5 LACS**

## LIMITED PERIOD OFFER



**1 Car Park Charges  
(Waived Off)**



**Club Membership  
(Waived Off)**



**International Holiday  
On every allotment**

## PAYMENT PLAN

SUBVENTION TILL POSSESSION


**5:75:20**

PRE-LAUNCH PLAN

**40:60**

9% Annual Return Till  
Possession and 40% of TSV  
on Completion



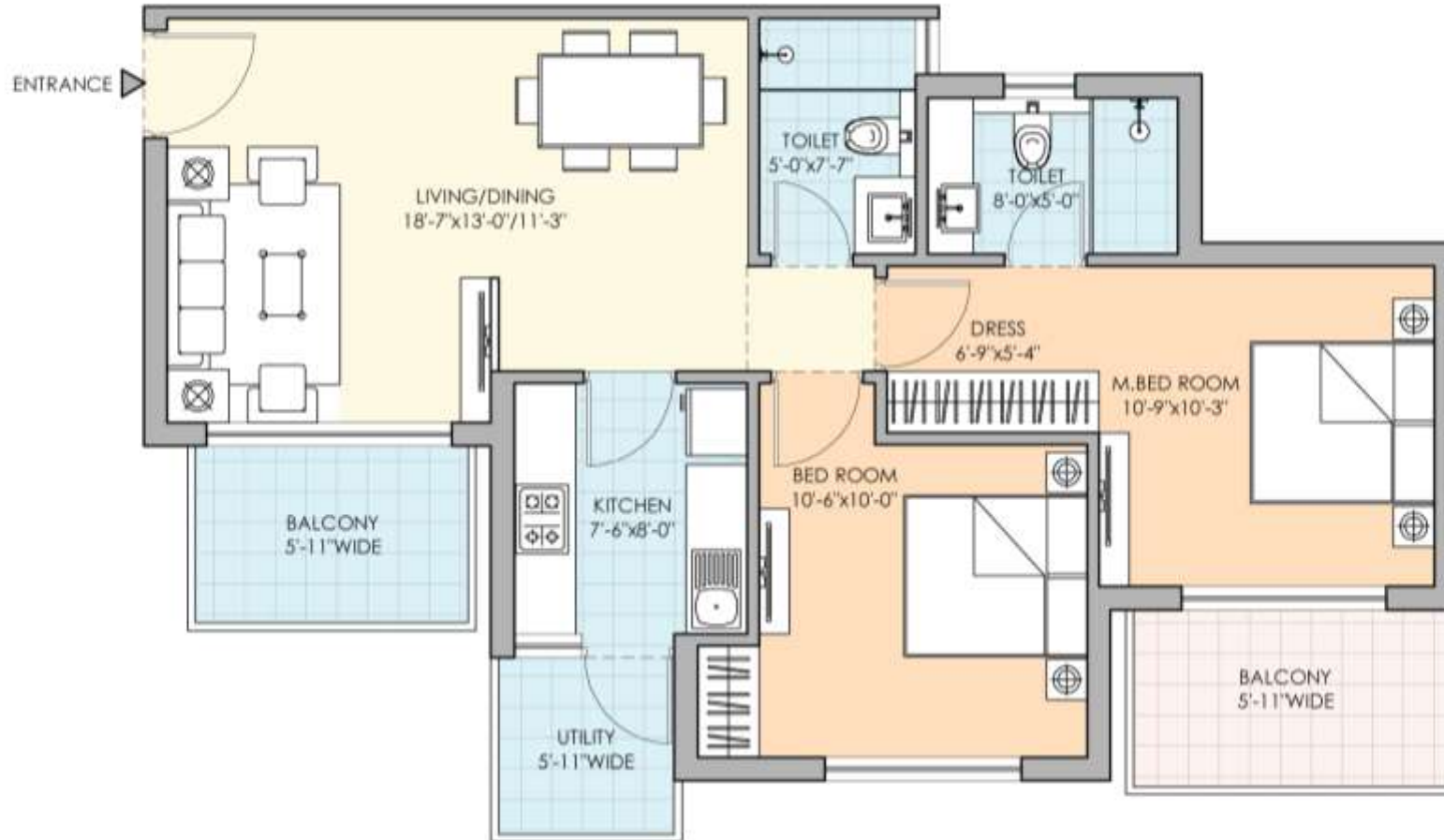


PRESENTING

**M3M NEW LAUNCH**

**WITH ZERO DEVELOPMENT RISK**

# FLOOR PLAN: 2 BHK

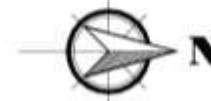


Apartment Type

2 BHK + 2 Toilet (Type-1)

Super Area

1200 Sqft



# SITE PLAN: 2 BHK + Study



Apartment Type

2 BHK + Study + 2 Toilet

Super Area

1478 Sqft



**THANK YOU**