



THIRUVANANTHAPURAM

Make it yours  
Stand out from the rest



## Olive Builders Hallmark of happy life

With 33 years of rich heritage in creating happy homes across India, Olive Builders stands tall in the realm of architecture. Its relentless commitment to quality construction and timely delivery of projects make Olive Builders the choice of millions around the world. In Kerala, including the first and biggest township of the state - Olive Courtyard, Olive Builders has a number of prestigious projects all bearing the hallmark of happy life.

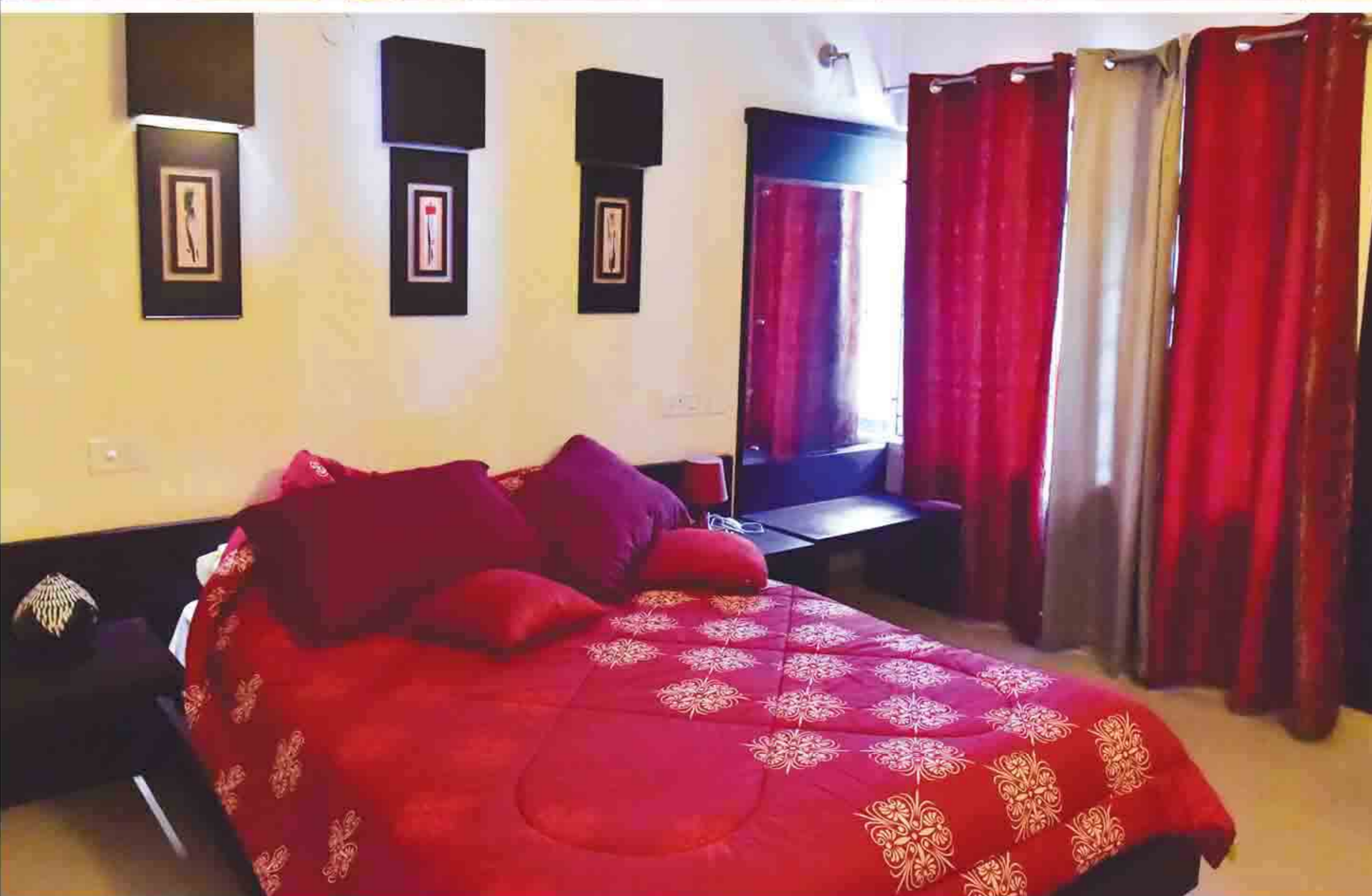


READY TO OCCUPY



THIRUVANANTHAPURAM

A unique space of comfort comes alive for you. Where life finds a rhythm ever so gentle taking pride in the best of what modernity can provide. Where the elegant lifestyle is harmonized by ingenuity in designs creating apartments that stand out from the rest. And even amidst the hustle and bustle of hectic days, the glimpse of the mesmerizing ocean is ever present, inspiring you with its calm, bringing glimmers of happiness to life moments. Life at Cressida, where unique is living.



SHOT AT LOCATION

## Stylish Designs

We have incorporated state-of-the-art architectural designs of world standards, so that your family lives in pure style and comfort happily ever after. The designs will resemble a beauty of great aesthetic sense which is eloquent in every form and shine. A characteristic class of epic royal feel will surely surround your living space.





SHOT AT LOCATION

## Hub for togetherness

The day is over and you are home. You seek to spend some quality time with your loved ones. At Olive Cressida, your home is spaciouly designed so you may indulge in those moments of togetherness that have no substitute.





# TYPICAL FLOOR PLAN I & III

## 2nd to 18th floor



FLAT A & E - 1696 Sq.Ft.  
FLAT B & D - 1696 Sq.Ft.  
FLAT C - 1380 Sq.Ft.

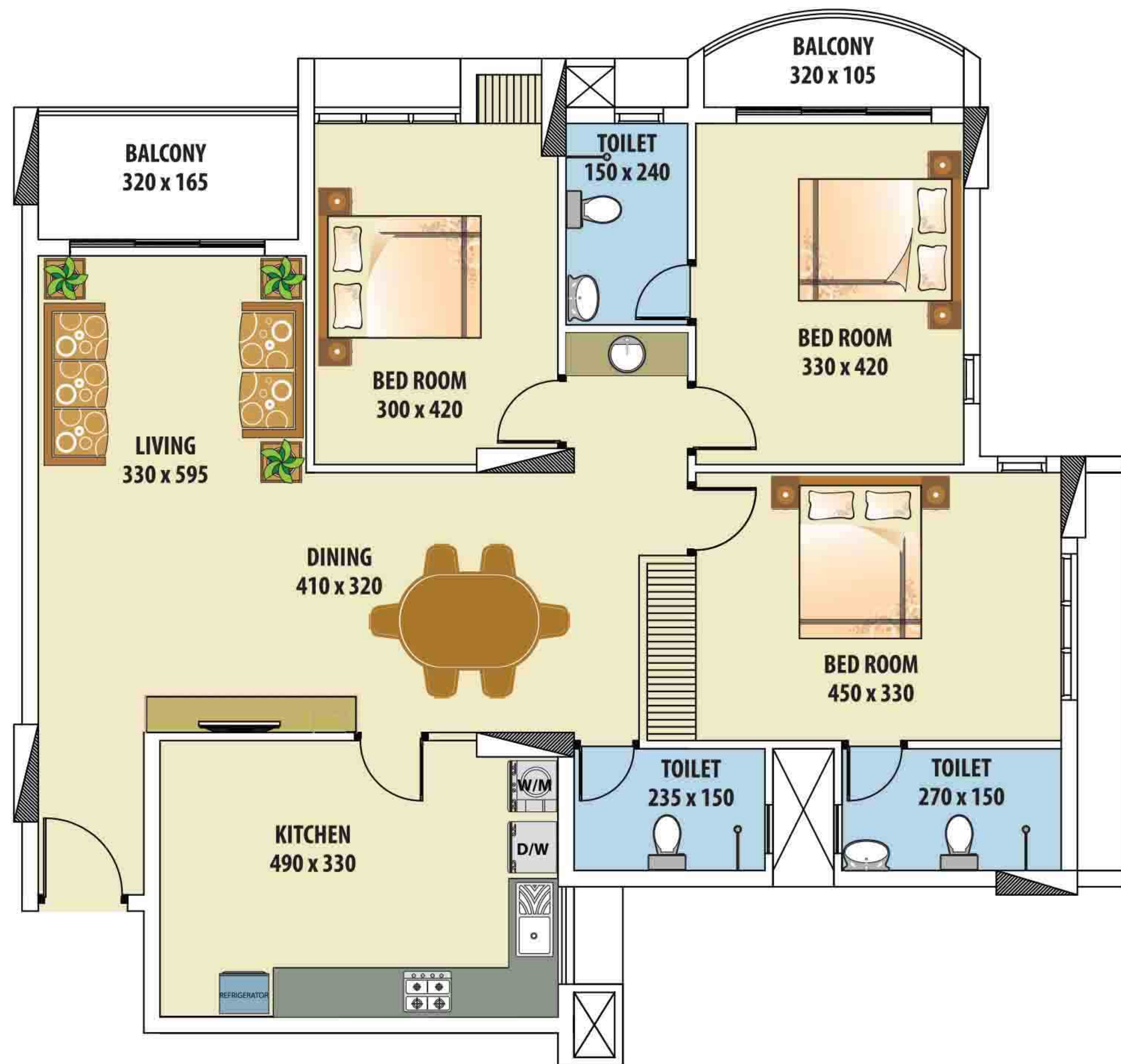


# TYPICAL FLOOR PLAN BLOCK-II

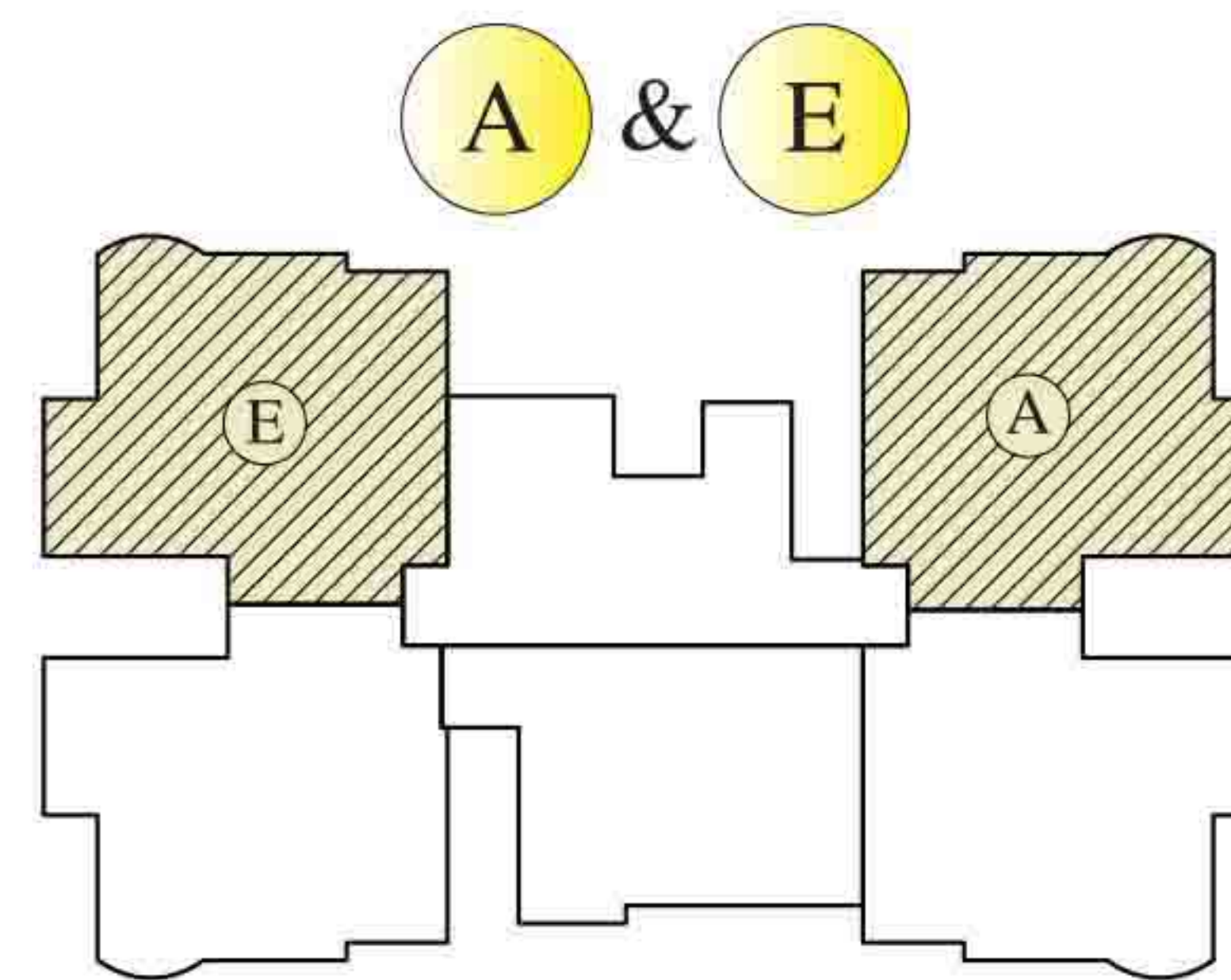
## 2nd to 18th floor



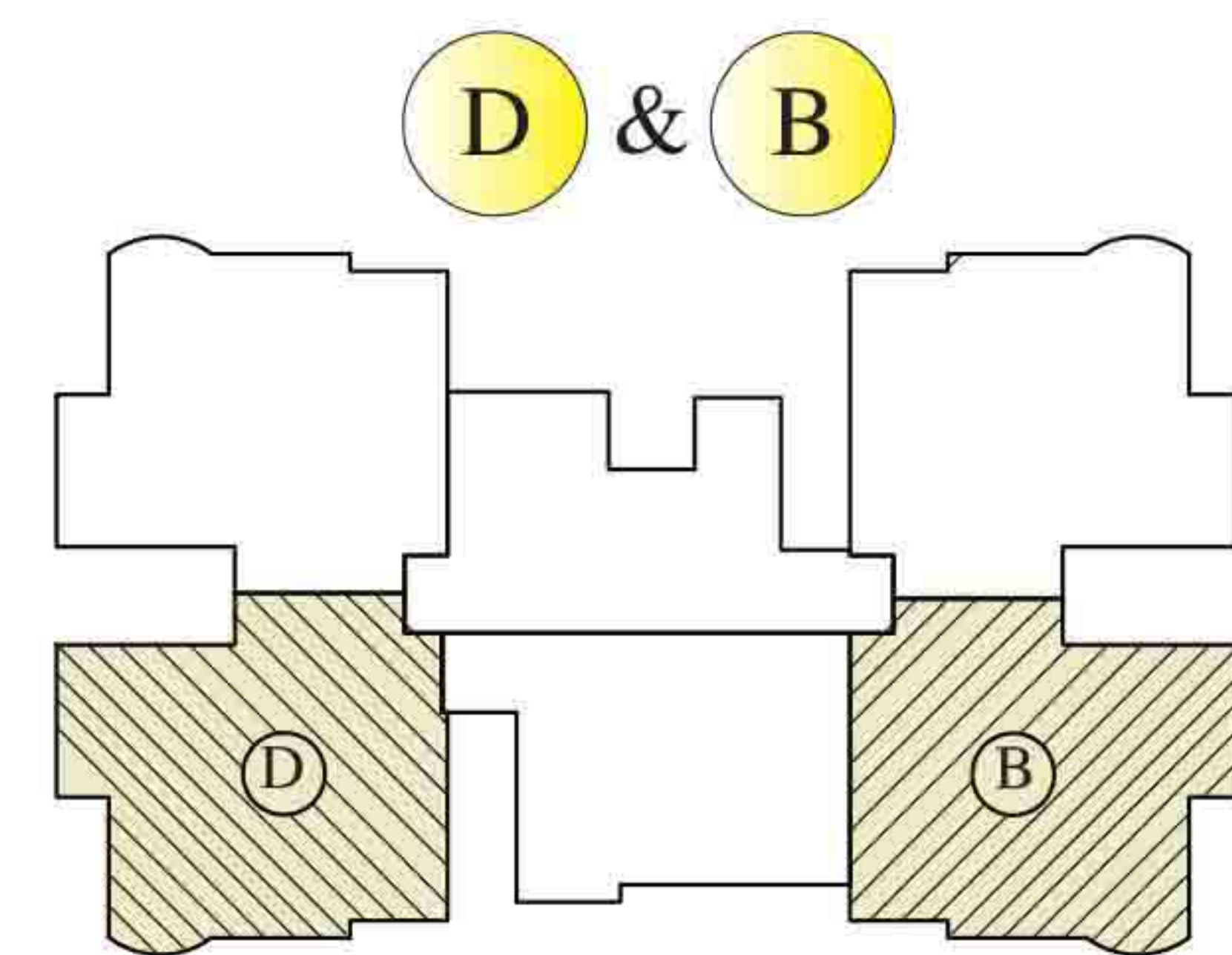
FLAT A & E - 1667 Sq.Ft.  
FLAT B & D - 1772 Sq.Ft.  
FLAT C - 1362 Sq.Ft.



**TYPICAL FLOOR PLAN I & III**  
2nd to 18th floor



TOTAL AREA - 1696 Sq.Ft.

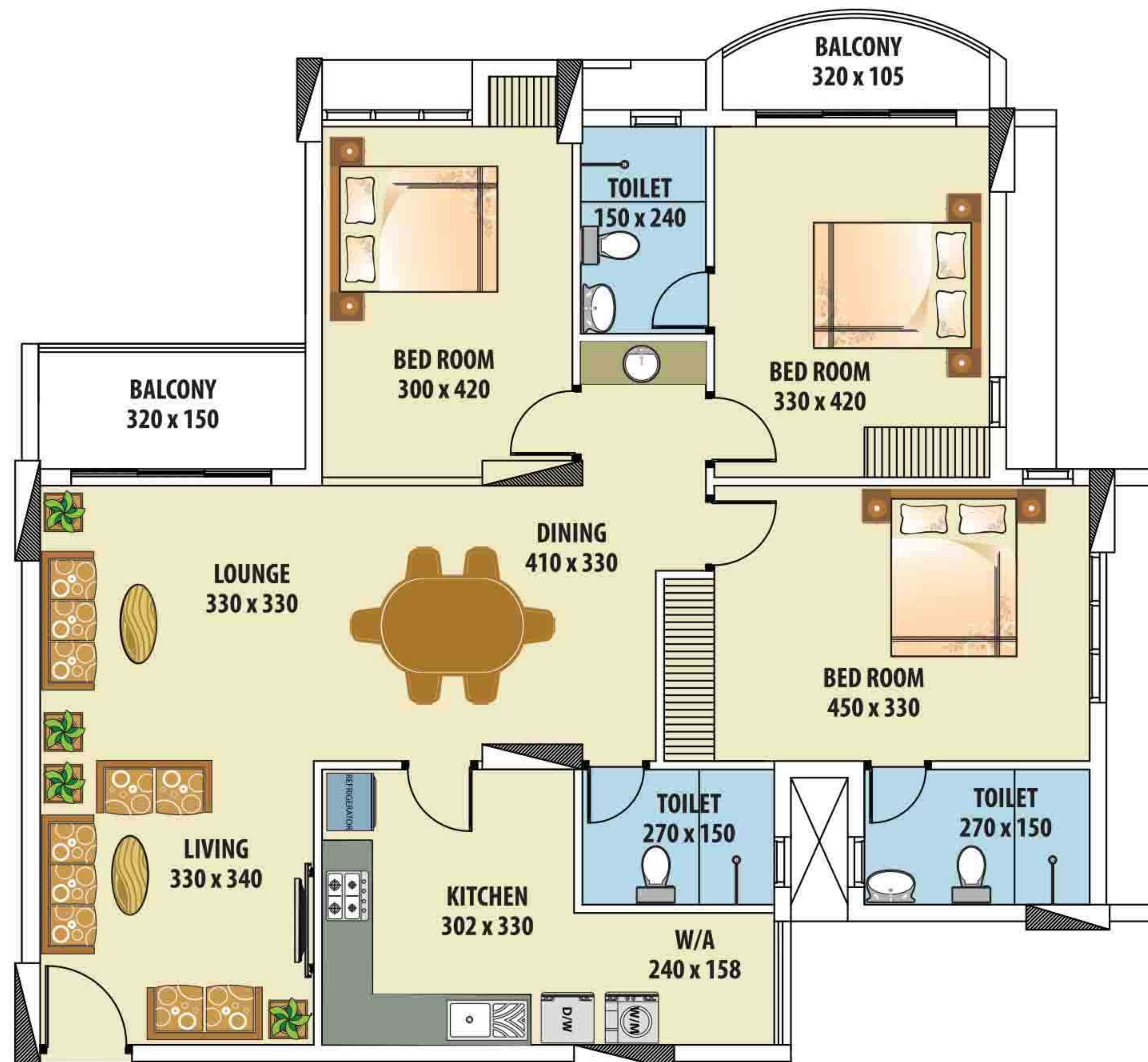
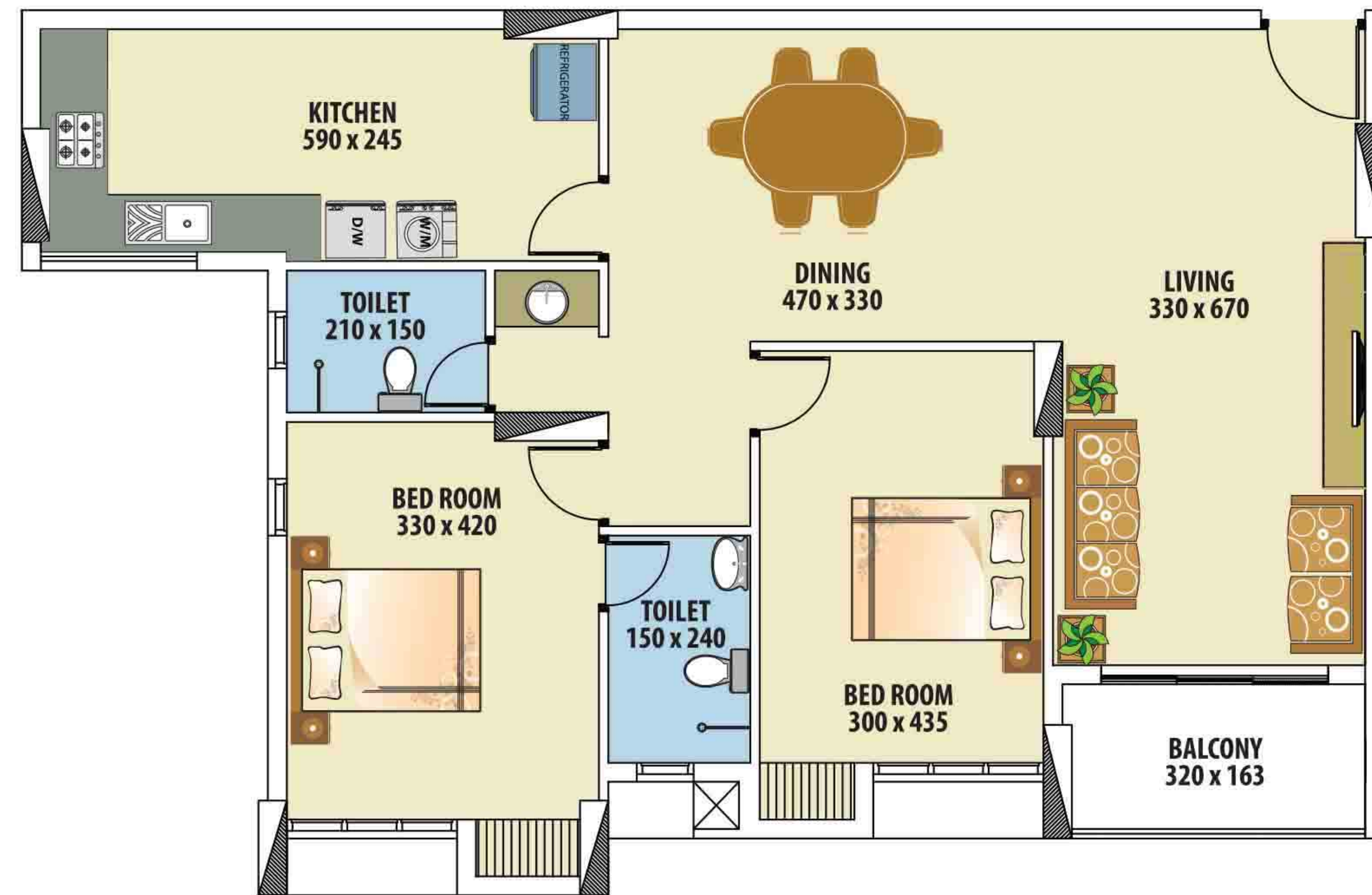
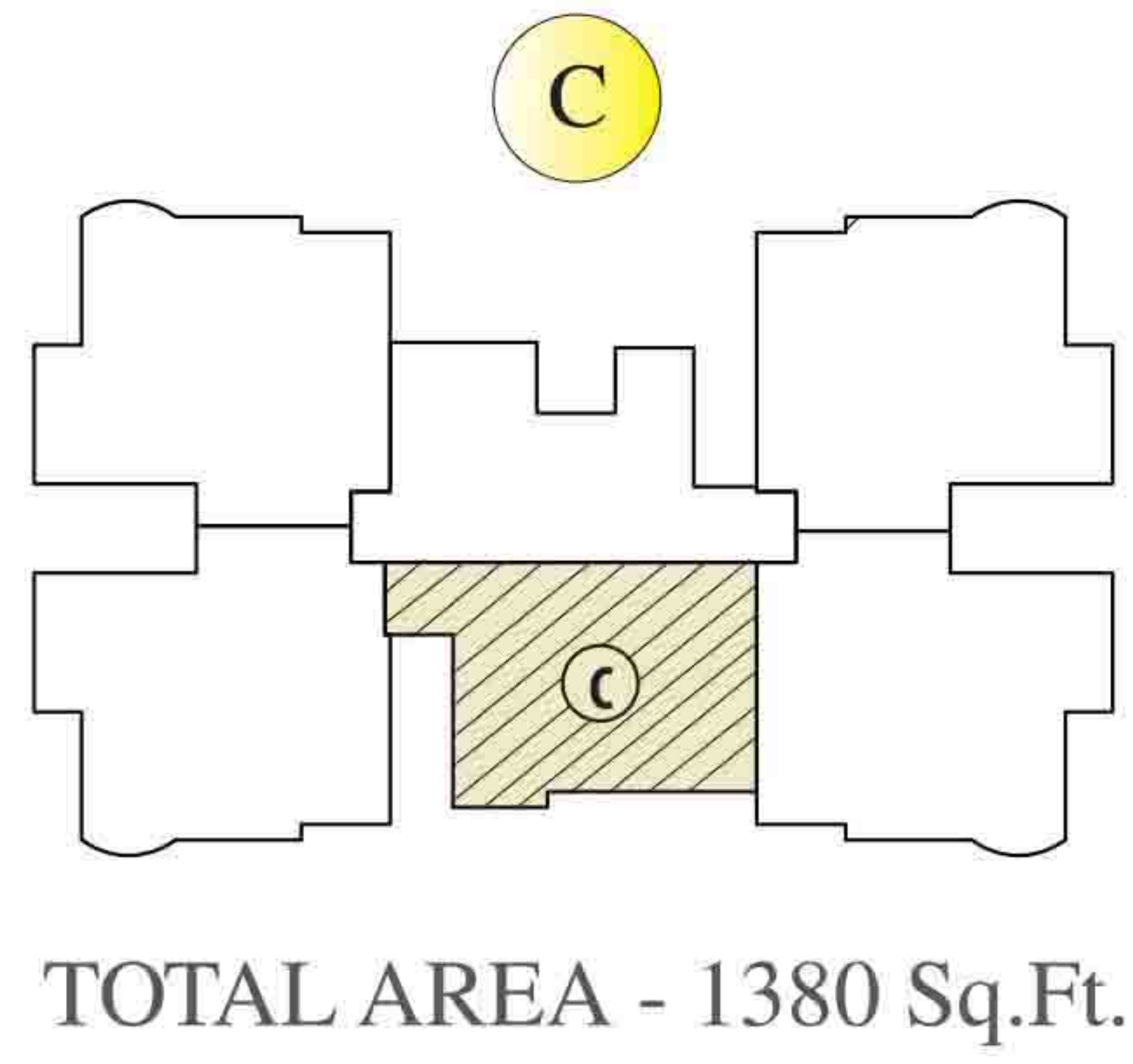


TOTAL AREA - 1696 Sq.Ft.

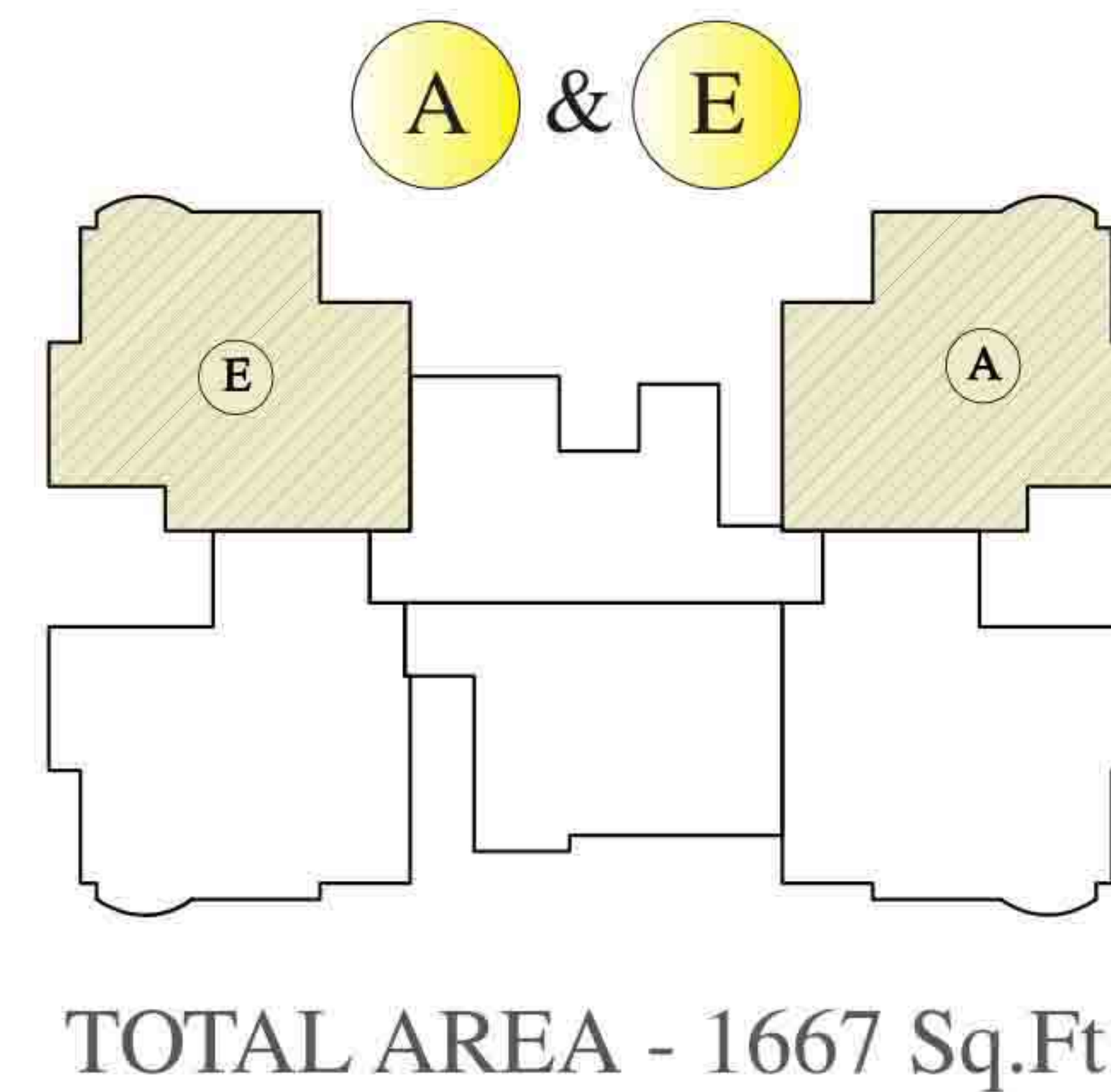




**TYPICAL FLOOR PLAN I & III**  
2nd to 18th floor



**TYPICAL FLOOR PLAN II**  
2nd to 18th floor

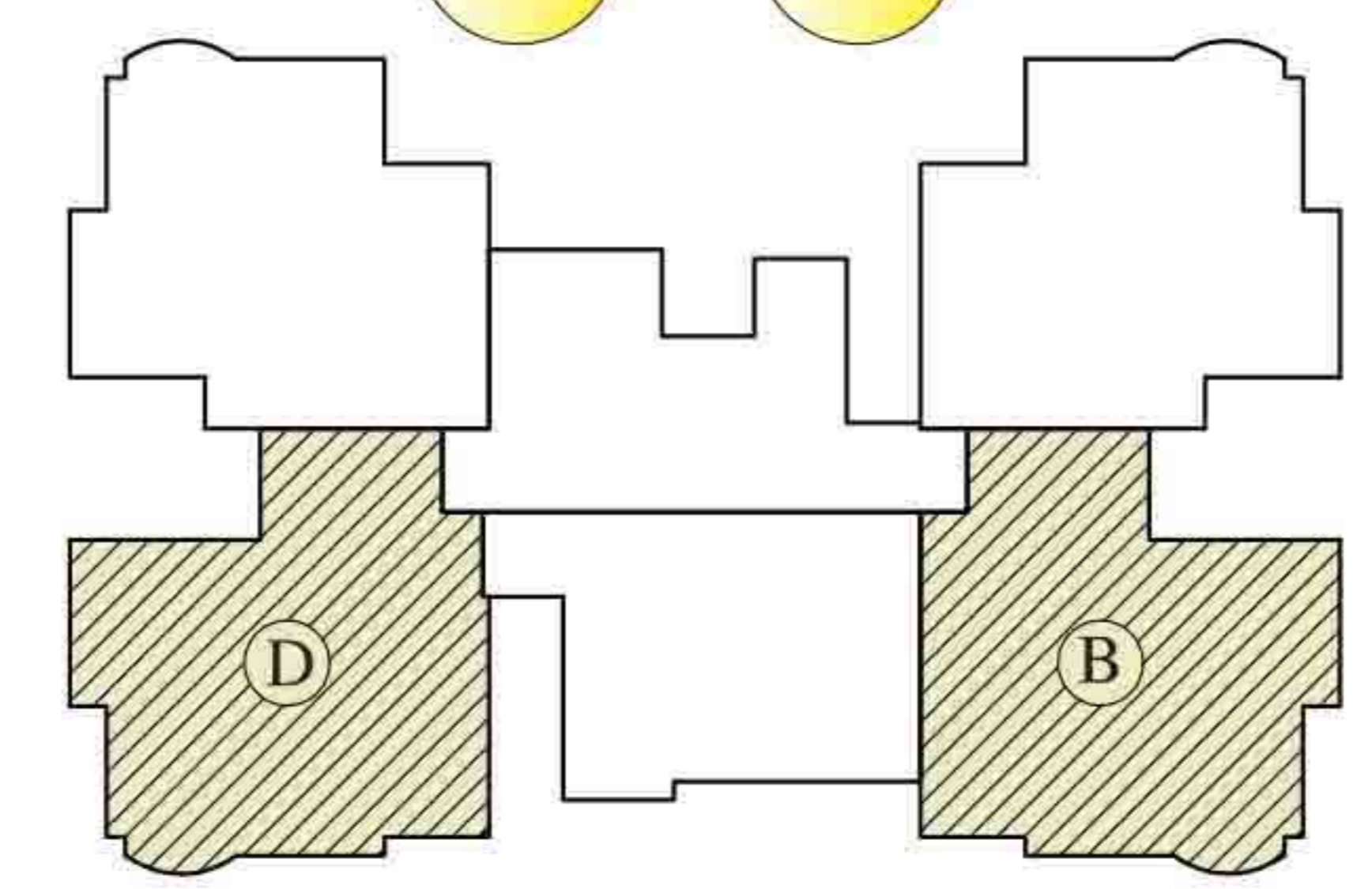


# TYPICAL FLOOR PLAN II

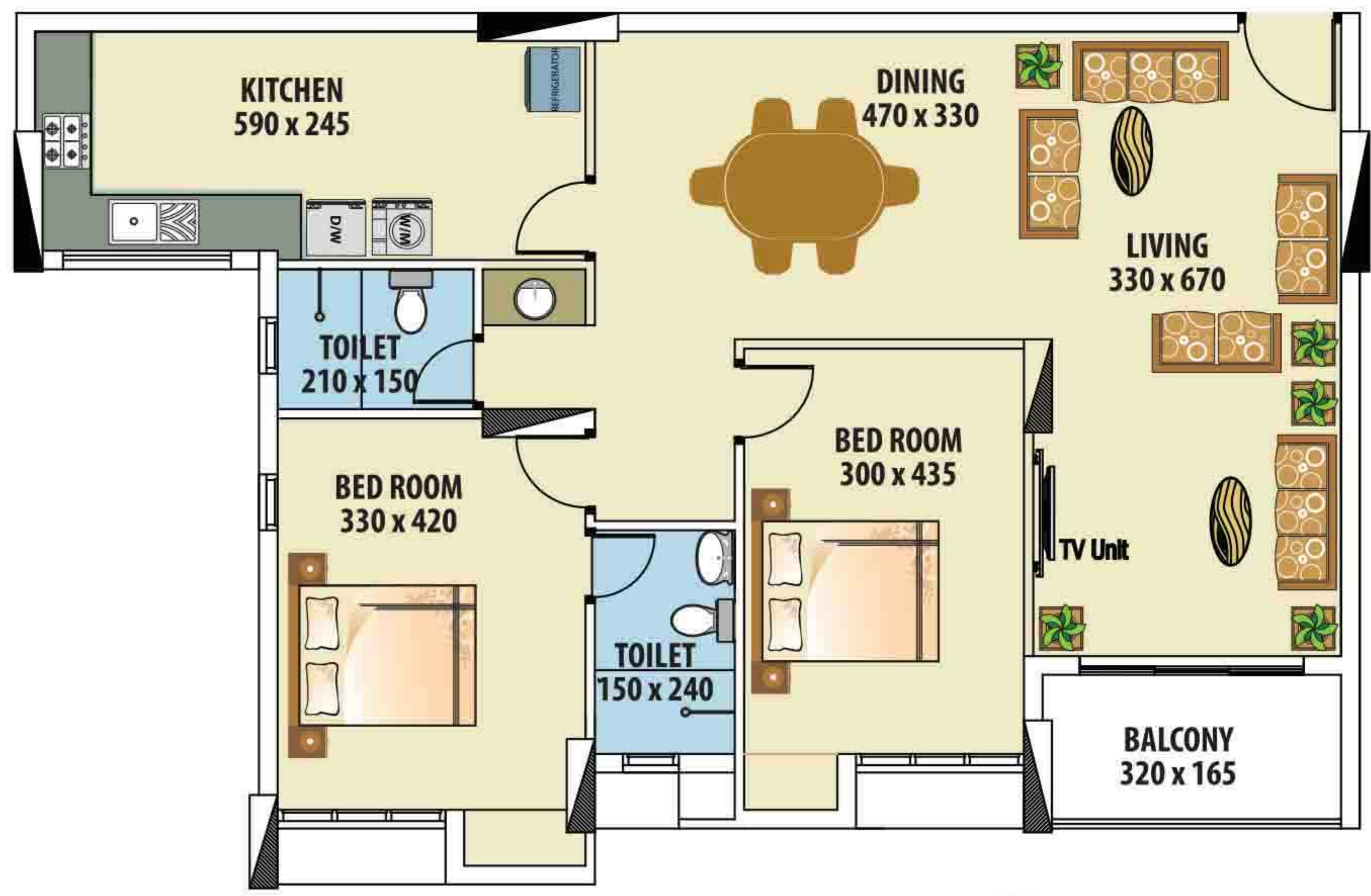
2nd to 18th floor



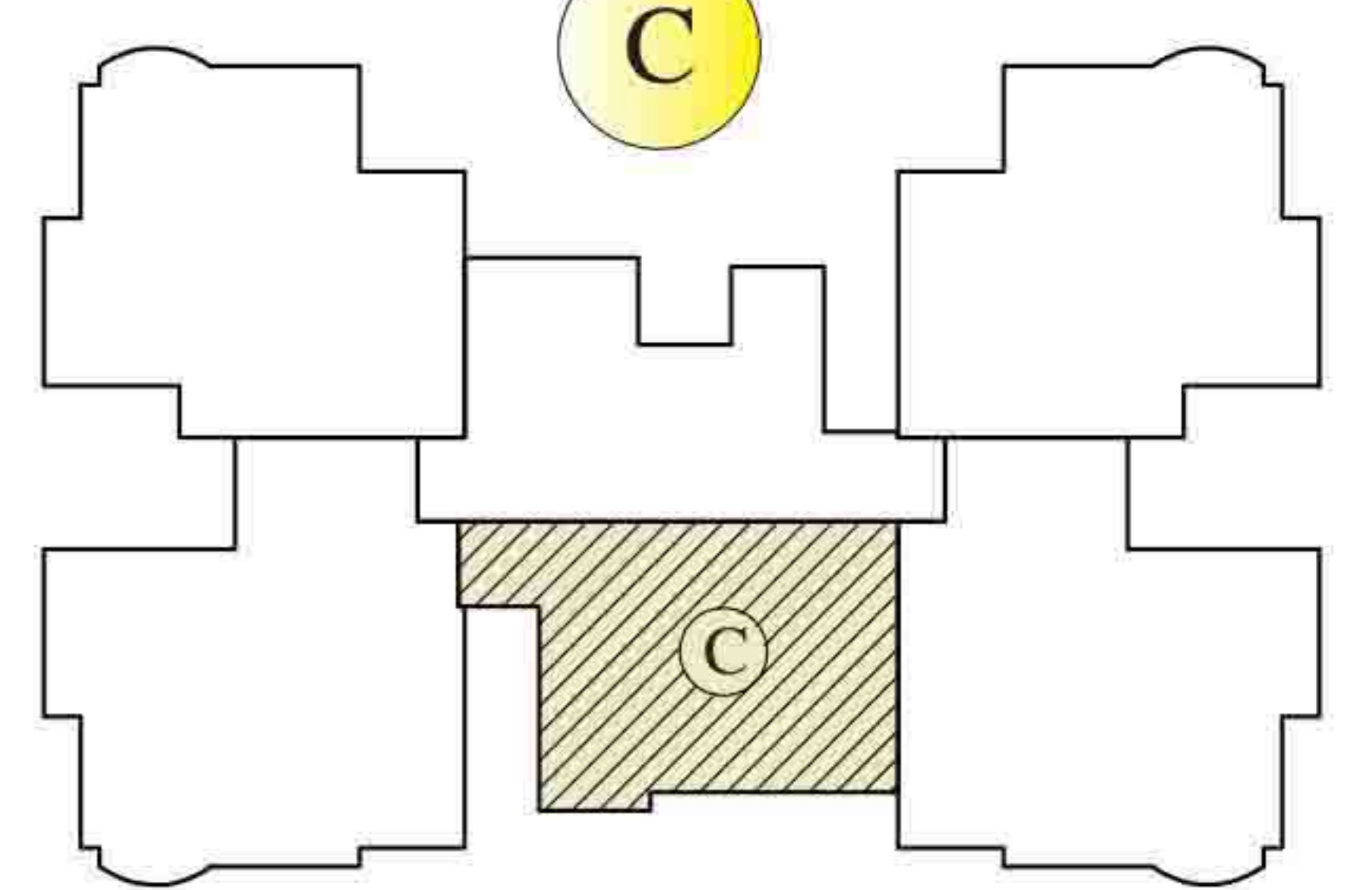
B & D



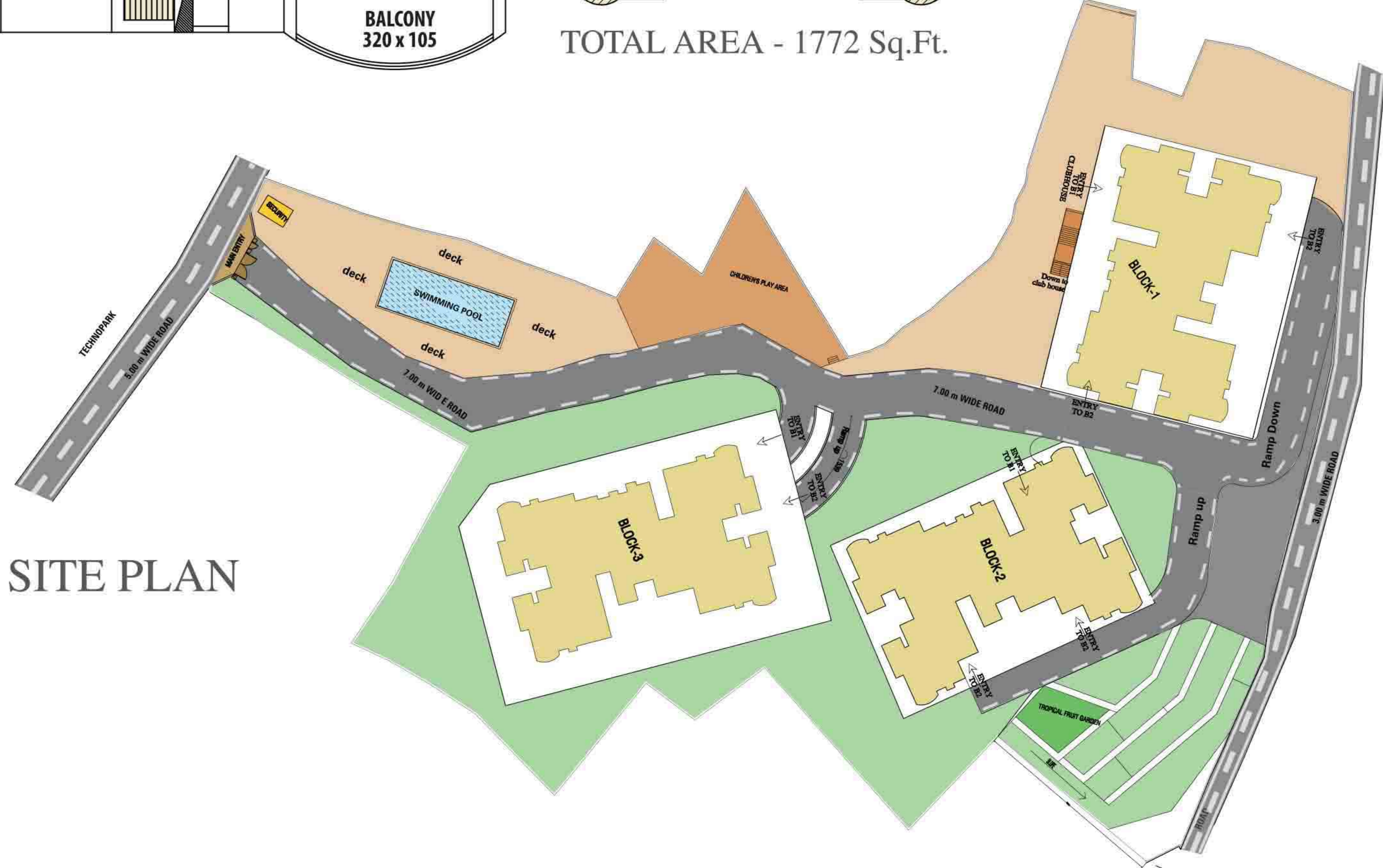
TOTAL AREA - 1772 Sq.Ft.



C

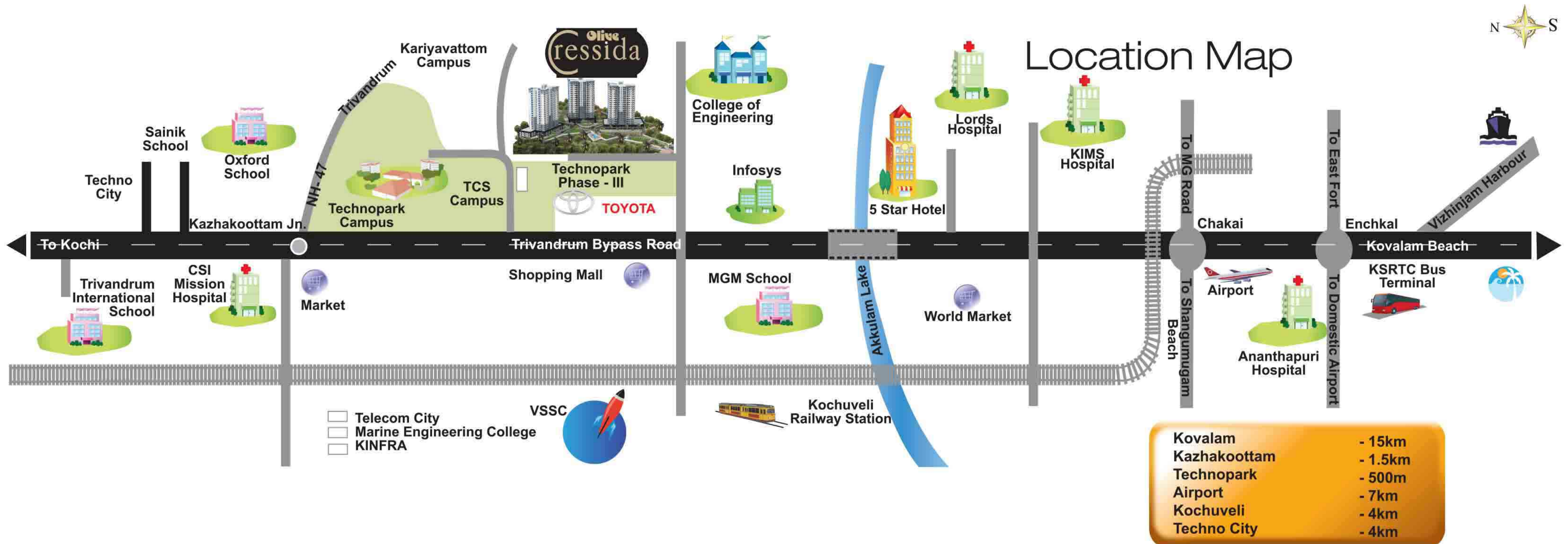


TOTAL AREA - 1362 Sq.Ft.



## SITE PLAN





### ► Highlights of the project

Township with all modern amenities • Three acres of land area having 60% of built up area and 40% vacant land for amenities • Sea facing apartments • Maximum cross-ventilated apartments • Balconies & Bedrooms facing west to ensure maximum air circulation and natural light • Tropical garden • Servant's room & Servant's toilets • Maximum carpet area • High end specification • Spacious rooms • Multi-level parking under the building • Two automatic service lifts in each tower

### ► Amenities

Swimming pool • Health club • Club House with Indoor games • Children's Play Area • Centralised gas connection • Tropical garden • WiFi • CCTV • Shuttle court • Elegant entrance lobbies • Association room • Reading room • Provision for cable TV connection • Elder's corner • 24 hours generator backup • Intercom • 24 hours security

### ► Specifications

**Structure:** RCC framed structure on pile foundation. Walls with red bricks for external walls and solid blocks for internal walls. **Floor:** Vitrified tile flooring for entire apartment. Toilets will have non-glazed/anti-skid ceramic flooring. **Walls & Tiling:** Kitchen walls have elegant ceramic wall tile for 45 cm above platform. Toilet will have elegant ceramic wall tile up to ceiling. **Kitchen:** Platform will be provided black granite and bewelling. Kitchen will have single bowl stainless steel sink of Diamond or equivalent. **Doors & Windows:** Main door will be of elegant first quality teak wood. Inside door will be of pincoda wood or well seasoned hardwood frame with moulded shutters. FRP doors in toilets. UPVC sliding doors in balcony without grill. Windows will be openable with anodised aluminium. **Painting Finishes:** All interior walls will be coated with two coats of putty, finished with premium emulsion paint. Ceiling will be coated with two coat putty and finished with plastic emulsion. Main door will be of melamine finish with all brass fittings. All other doors will be finished with satin enamel paint. Windows and ventilator grills will be finished with enamel paint. **Electricals:** Three phase power supply with concealed wiring (Finolex/equivalent) in PVC conduits controlled by ELCB and MCB through independent energy meters. Modular switches of ABB will be provided. AC provision will be provided in all the bedrooms. Power plug points will be provided for Washing Machine, Dish Washer, Hood & Hob and Geyser in attached bedroom toilets. **Plumbing & Sanitary:** Toilets will be provided with cascade EWC with flush tank (Hindware/Cera), Jaguar CP fittings will be provided in all the toilets. **TV & Telephone Cable:** One TV point will be provided in living and master bedroom with provision for Cable TV connection. Telephone points will be provided in living and all bedrooms. The Cables for TV & Telephone will be provided from the flat upto a common junction point at a suitable location. **Power backup:** For Lift, water pumps, common lights etc. and 500W in each apartment. **Balconies:** Balcony will have M.S railing upto 4 ft. height. **Water:** KWA Drinking water connection in kitchen. Treated ground water for kitchen/toilets/other area. **Fire Fighting:** Will be provided as per government safety norms. Fire sprinkler in each apartment. **Car Parking:** Comfortable Multi-level car parking. **Lifts:** Fully automatic two high speed service lifts, Johnson make.

\*The elevation shown is an artistic impression only and may vary. The pictures shown are indicative only. All specifications & dimensions given in this brochure are subject to variations without specific or general notice.

**OlivePROJECTS**



**Olivekalista**  
KAKKANAD, COCHIN



**Olive Celestina**  
KOTTAYAM



**Olive Riletta**  
KOTHAMANGALAM



**Olive lantha**  
EDAPPALLY TOLL, COCHIN



**Olive Curana**  
EDAPPALLY TOLL, COCHIN



**Olive Karenina**  
THIRUVALLA



**Olive carina**  
THIRUVALLA



**Olive Vision**  
PUTHENCRUZ

**OliveHOTELS**



**DOWN TOWN**  
5 STAR LUXURY HOTEL  
KADAVANTHRA, COCHIN



**eva BUSINESS HOTEL**  
KAKKANAD, COCHIN



[www.olivebuilder.com](http://www.olivebuilder.com)

Email: [mktg@olivebuilder.com](mailto:mktg@olivebuilder.com), [mail@olivebuilder.com](mailto:mail@olivebuilder.com)

**COCHIN** (Corporate Office): Olive House, 50/932 A, Edappally, Kochi - 682024. Tel: +91 484 4214444 Mob: +91 9605044400, 9656101001

**MUMBAI** (Head Office): 103, J.K. Chambers, Sector - 17, Vashi, Navi Mumbai - 400703.

**TRIVANDRUM**: Behind Technopark, Trivandrum. Mob: +91 9744460606, 9744300333

**KOTTAYAM**: Opp. TB Road, Kottayam - 686039. Mob: +91 9744925500, 9744300333

AUSTRALIA | CANADA | KUWAIT | MUSCAT | QATAR | SAUDI ARABIA | UAE | UK | USA