

^ ^ ^ ^ ^ ^ ^ ^





4 BHK EXCLUSIVE RESIDENCES

# Intelligent homes that define elegance

Redefining the meaning of elegance.  
AMAN is designed keeping in mind every aspect of  
your lifestyle and requirements of space.

A column structure that is designed to have  
large spaces that can be customized as per your lifestyle.  
Ducts that are designed for seamless integration of  
air conditioning be it Split or a VRV system.  
Large common spaces and clean vehicular movement  
on ground floor and basement parking access  
with minimum columns.

Every aspect is taken care of from  
the point you enter the campus!

Welcome to

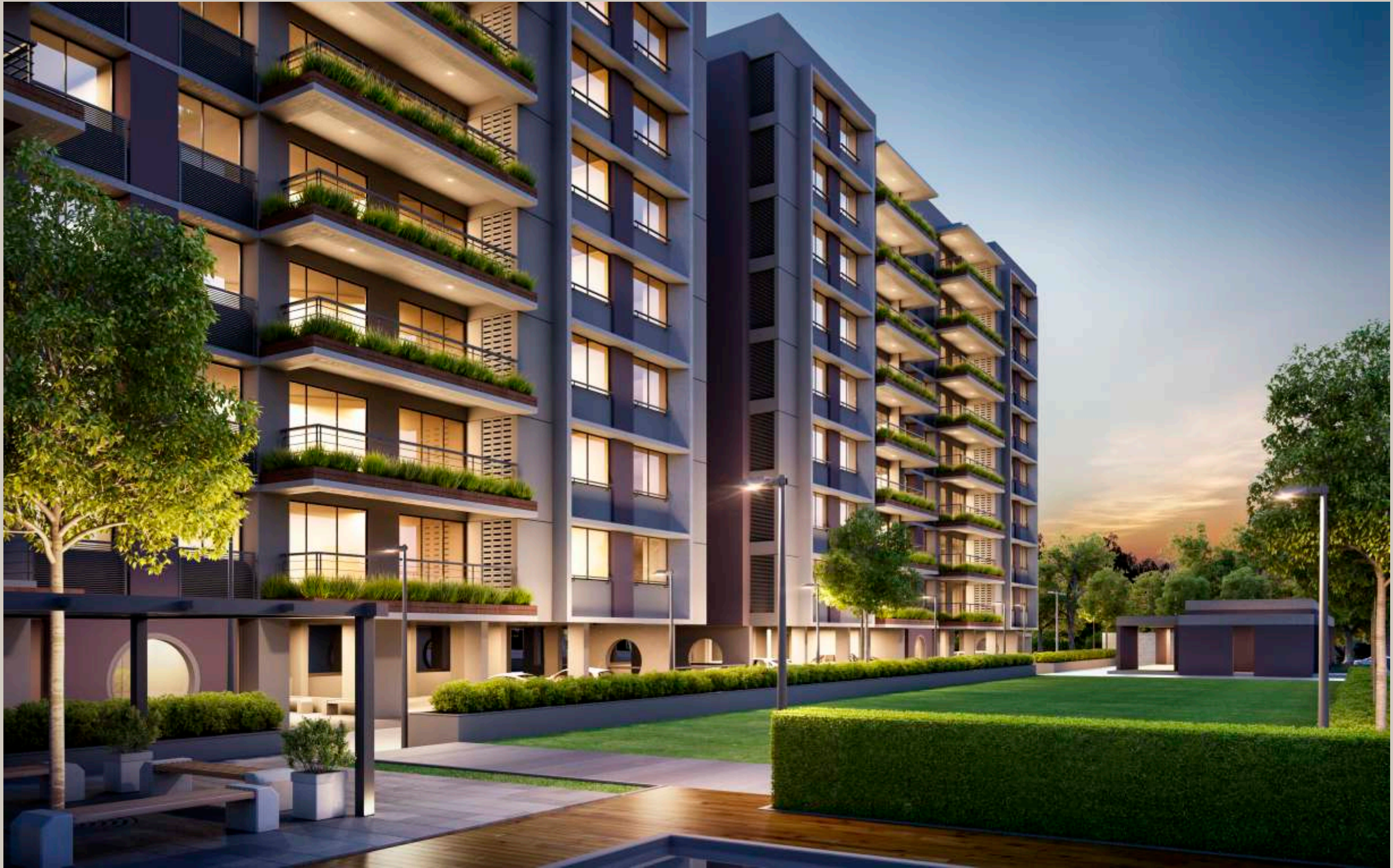




Simple in design yet uniquely luxurious Aman offers ample common spaces, grand entrance foyers and elegant finishes. Indulge in simple pleasures of life; be it a cool dip in the pool, an energising workout at the gym or just a relaxed walk on the lawns.







Aman has a comprehensive design approach that maximizes all facets of your lifestyle. Spaces that cater to all ages and are an extension to your home!



ground floor plan



typical floor plan

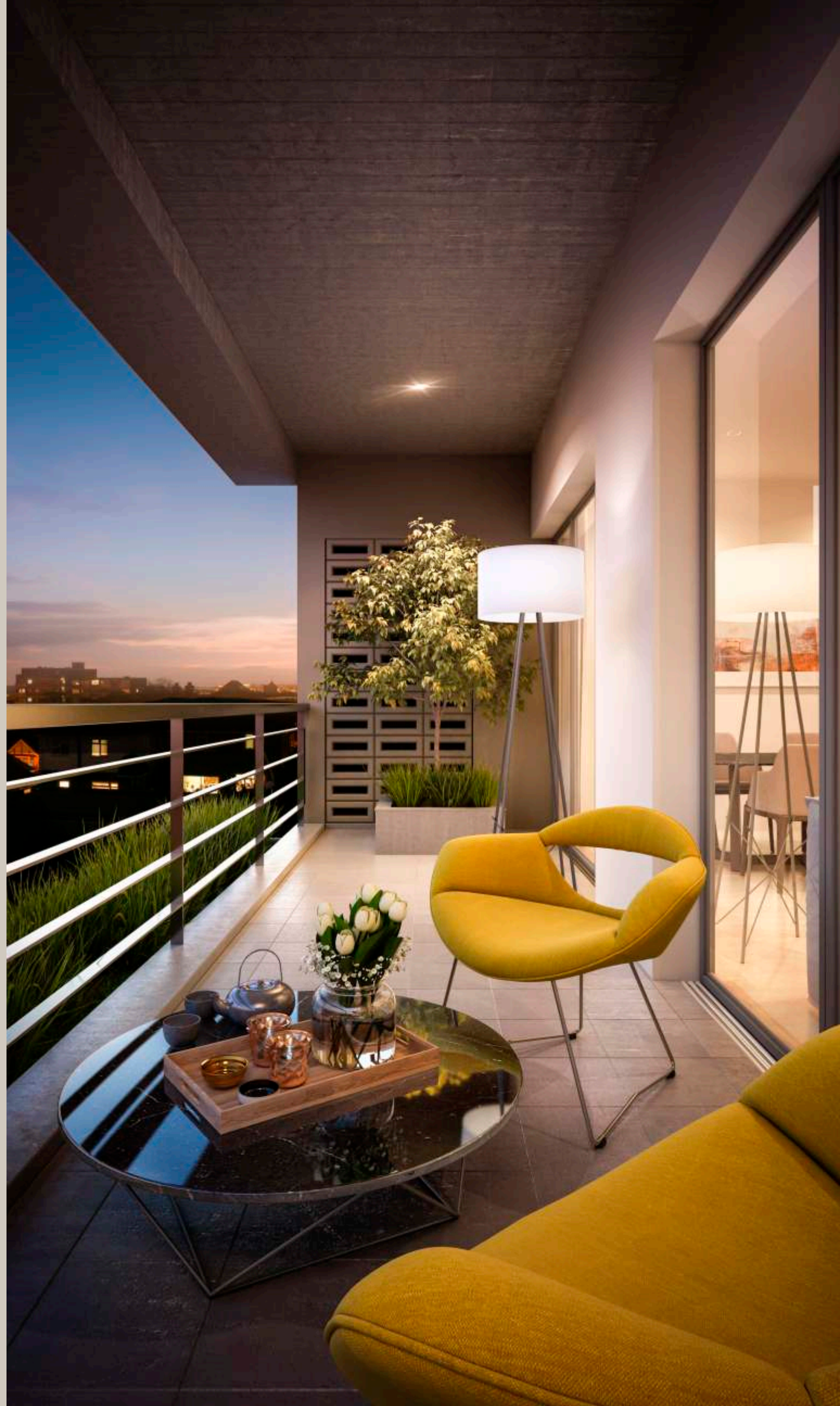
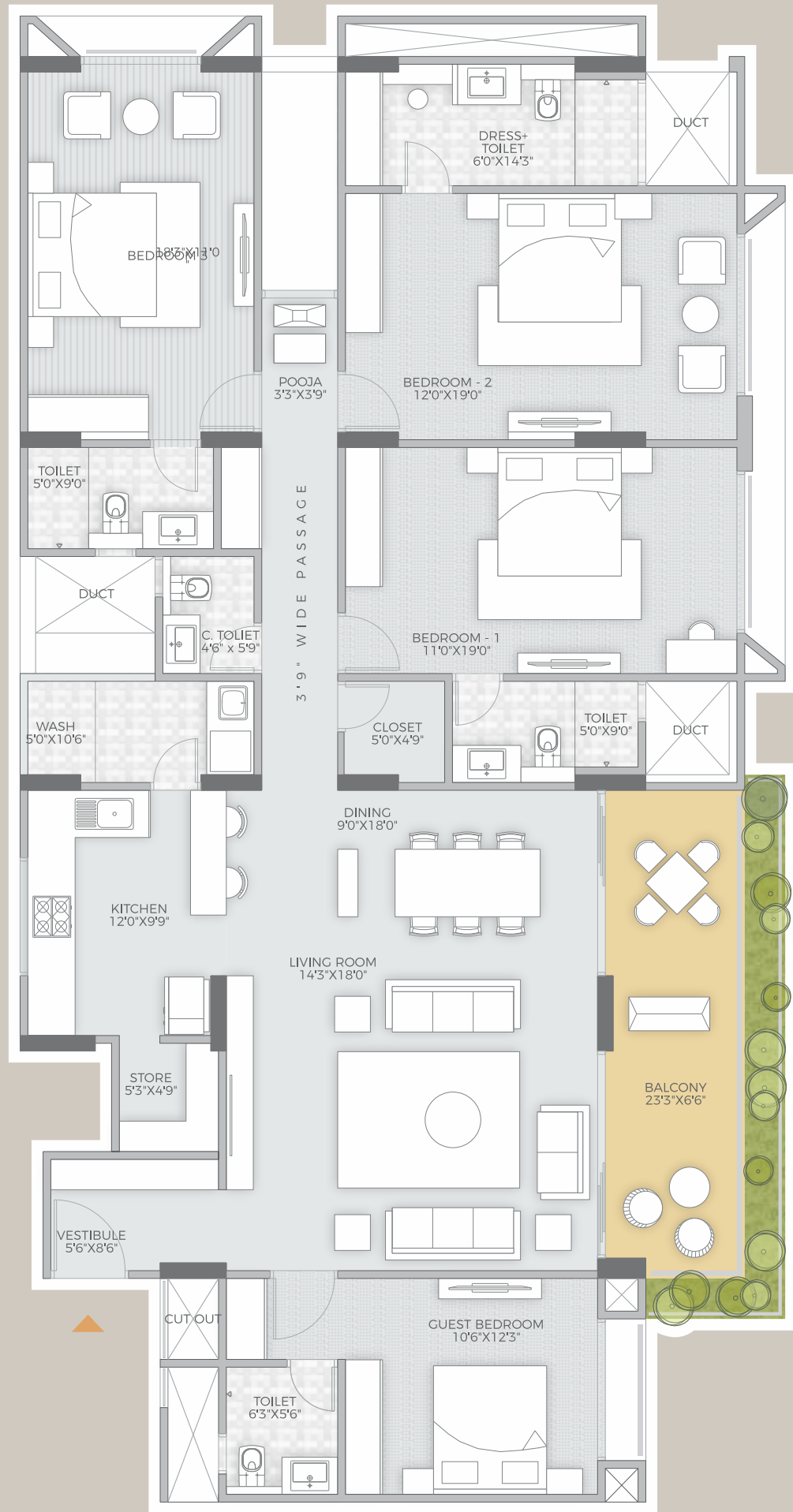








unit plan





# features



Sports Room



Club house with fully equipped Gym



Splash Pool



Video-door phone for security in each flat



Gazebos



Children Play area



Entrance foyer with exclusive lounge area



Split AC in all rooms



2 -high speed elevators in each tower



Party lawn with service kitchen



# specifications

## STRUCTURE

- Earthquake resistant RCC frame structure with brick walls.

## WALL FINISH

- Double coat Mala plaster with Textured finish (external).
- Wall cement plaster/ putty finish (internal).

## DOORS & WINDOWS

- MAIN DOOR - Polished natural veneer door with quality locksets.
- INTERNAL DOORS - Flush doors with SS hardware.
- High quality double-glazed powder coated aluminum windows.
- Granite jambs for all windows.

## LIVING ROOM

- Vitrified flooring in drawing /dining, and passage area.
- Anti-skid ceramic tiles in balcony.

## BEDROOMS

- Vitrified flooring in all bedrooms.
- Premium quality wooden flooring in master bedroom.

## KITCHEN

- Vitrified flooring
- Polished Granite platform
- Stainless Steel sink with Drainboard
- Ceramic tile dado above Granite platform
- Kota Stone in wash area
- DP Kota shelf in store room

## BATHROOMS

- Ceramic tiles flooring and dado
- Marble top counter wash basins
- Jaquar or equivalent C.P. fittings of premium quality
- Cera or equivalent Sanitary ware
- Wall-hung EWC

## ELECTRICAL

- Concealed conduits with copper wires
- (Finolex or equivalent)
- Sufficient points for power and lighting
- (MK fittings or equivalent)
- Provision for cable and telephone points
- in all bedrooms
- All sockets with protective MCB.

# basement plan



# location

Aman is strategically located off the Sindhu Bhavan road surrounded by a low rise and peaceful neighbour hood.

This road being the model road of the city has recently seen tremendous growth. It is brimming with top of the notch entertainment facilities like eateries, sports complexes and hotels to common amenities like schools and hospitals. Everything is easily accessible minimizing your daily commute, making living in AMAN the home you have been looking for!



## Specific Notes

- The developer reserves the rights to change, revise or make any additions, omissions, alterations or modifications to the scheme as a whole, or part thereof at their sole discretion without any prior notice. Such changes will be binding on all members.
- All dimensions presented herein are approximate and measurements are made from unfinished surfaces.
- External changes of any sort will not be permitted. Internal changes may be permitted with prior written permission from the developer and will be charged separately.
- This brochure is meant for the purposes of presentation only, and should not be treated as any form of binding document, offer or legal contract.
- Site development is subject to clearances from AUDA and other government entities.

## Disclaimer :

Whilst reasonable care has been taken in the preparation of the brochure, the developer and its agents shall not be held responsible for any inaccuracies in its contents.





**VISHWANATH**  
buildcon

N.D. Avenue, Opp. Club O7, Sky City Rd,  
Off S.P. Ring Road, Shela, Ahmedabad 380058.

**Tel.: +91 98797 89039**

Email : [info@vishwanathrealtor.com](mailto:info@vishwanathrealtor.com)  
[www.vishwanathrealtor.com](http://www.vishwanathrealtor.com)

RERA Reg. No.: PR/GJ/AHMEDABAD/DASKROI/AUDA/RAA01955/090318

Architect  
**Groundwork Architecture**  
Ph.: 079 26926004

Structural Consultant  
**PNL engineering consultants pvt. ltd.**  
Ph.: 079 26446318