



2 BHK EXCLUSIVE APARTMENTS
& SHOPS @ MOTA CHILODA



प्रमुख
Orchid



प्रमुख
Orchid

2 BHK EXCLUSIVE APARTMENTS & SHOPS @ MOTA CHILODA



AMENITIES



LANDSCAPED GARDEN



CHILDREN PLAY AREA



WATER BODIES



SENIOR CITIZEN SITTINGS



DROP-OFF ZONE



C.C. TV SURVEILLANCE



WALKING TRACK



INTERNAL R.C.C. ROAD



BRANDED LIFT



SUFFICIENT PARKING

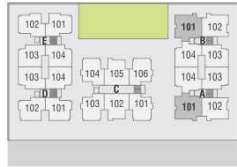


प्रमुख
Orchid

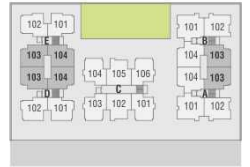
2 BHK EXCLUSIVE APARTMENTS & SHOPS @ MOTA CHILODA

LAYOUT PLAN



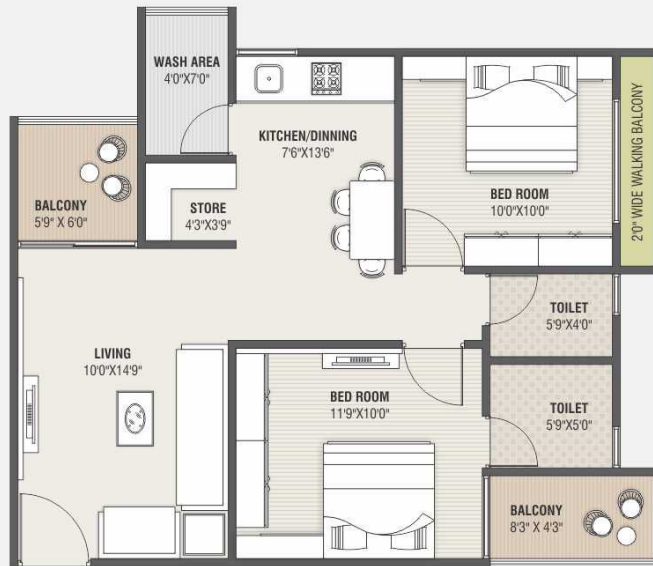


A - 101
B - 101

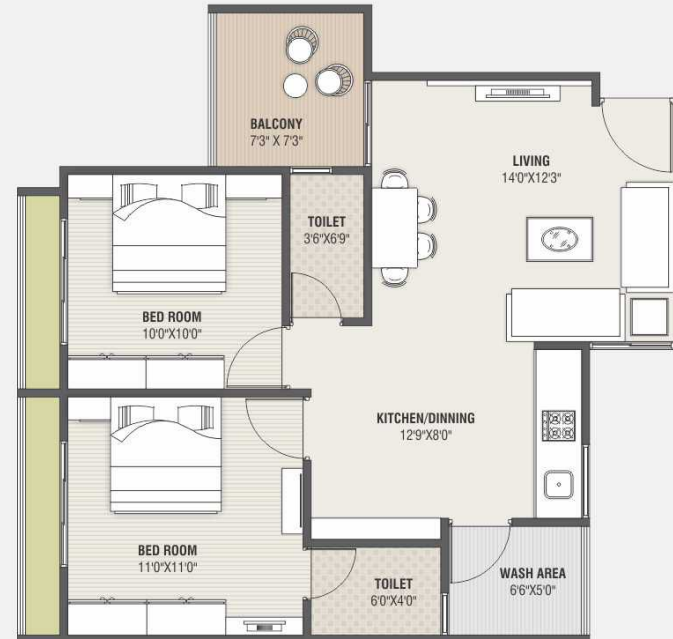
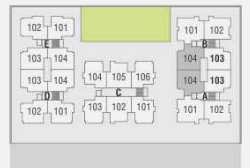


A - 103
B - 103
D - 103, 104
E - 103, 104

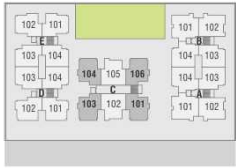
A - 102
B - 102



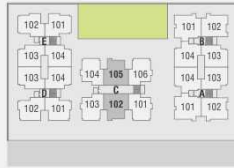
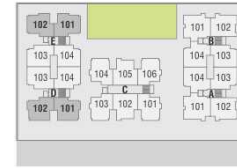
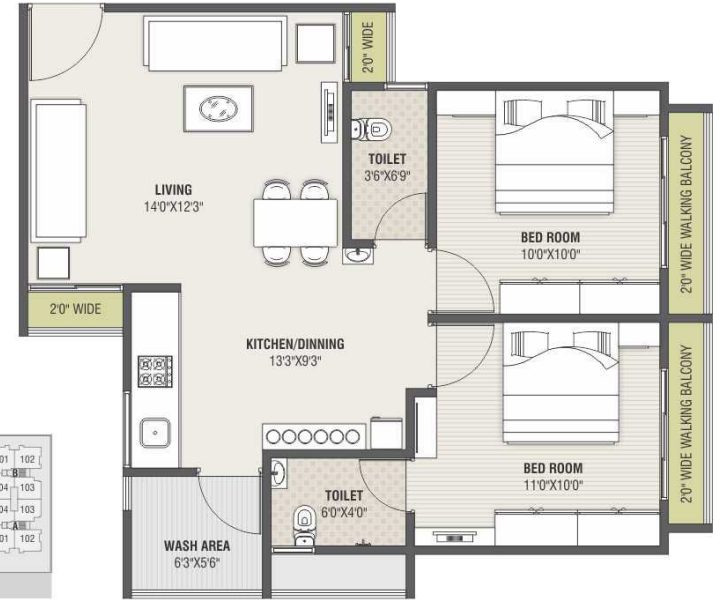
A - 104
B - 104



C - 101, 103
C - 104, 106



D - 101, 102
E - 101, 102



C - 102, 105

प्रमुख
Orchid





प्रमुख Orchid

GROUND FLOOR PLAN



Specifications

Structure

Earthquake resistant R.C.C. frame structure as per new by laws.

Flooring

Vitrified tiles in the entire flat. Chaina mosaic in all terraces.

Kitchen

Mirror polished granite platform with S.S. sink. Glazed tiles dado up to lintel level.

Wall finish

Internal mala plaster with white putty. External double coat sand faced plaster with acrylic paints.

Doors & Windows

Decorative Wooden main door. All other, flushed doors with both side Laminated sheet. Fully glazed powder coated aluminum section in all windows.

Toilets

Glazed tiles in floor & dado upto lintel level. CP fittings of leading brand.

Electrification

Concealed copper wiring with A.C. point in all Bedrooms. T.V. point, Adequate points in all the rooms with modular switches. MCB in each apartment.



प्रमुख
Orchid



NOTES

- Developers reserves the rights for alteration of specifications and design.
- External & internal changes are not allowed.
- All dimensions are approximate, average & subject to variations.
- Membership of member will be cancelled automatically without any prior notice, if any member will be unable to make payment in time & deposited amount will be refunded after new booking with 10% deduction of total amount as administration charge.
- GEB, GUDA, Legal expenses, Service Tax, VAT & other GOVT. Charges if any, Stamp duty, Registration fees & Maintenance deposit shall be borne by the members.
- This brochure is not to be treated as part of the legal document. It is only for easy display of the project idea.



From : **PSY Group**
(Nilay Desai) 704, 7th floor, Pratik Mall,
Nr. Swaminarayan Dham, Koba-Gandhinagar High way,
Gandhinagar 382421. Ph. 079- 2360 0158,
(Cheques in favour of **PSY FOUNDATION**)



Partners
98258 67305 - Bankim Joshi
98246 03432 - Jayesh Prajapati

E-mail : pramukhproperty@gmail.com
E-mail : psyprojects@yahoo.in
Web : www.psyprojects.com

Architects &
Landscape Designers
STUDIO GREEN

Structure Engineer
Torsion
(Vasant Soni)