

HERE,
EVERYTHING IS MADE,

SPECIALLY FOR

'YOU'

IT'S A BEGINNING
OF LIFE,
AND WE ARE HERE
WITH
YOU



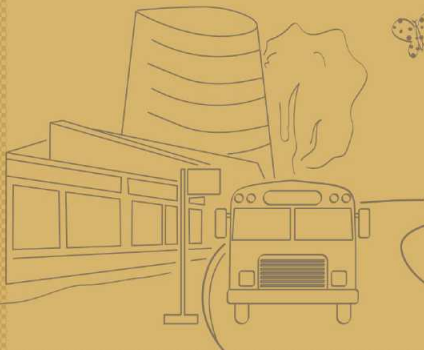
based on research we covered

DAILY NEEDS

PERSONALIZED LIFESTYLE

IMPORTANCE OF HEALTH

EASE OF TRANSPORT CONNECTIVITY



aaryan
gloria a beginning
of life
2 & 3 BHK Apartments

at Gala Gymkhana Road
South Bopal, Ahmedabad.

Gloria means magnificence & great beauty. The location of Aaryan Gloria is so prime that though it being the only 3 corner road in South Bopal it still boasts of a very peaceful environment which can release all your stress after a hectic day. Aaryan Gloria is luxurious new awakening for the first time in South Bopal where you will submit yourself to the lure of landscape. As the name is Aaryan Gloria, it would be amongst the most beautiful structures in South Bopal which possesses 2 & 3 BHK residential units with amenities like yoga centre, club house, health club, theme gardens, children play area, banquet hall, etc. You are welcomed to feel the experience here.

Developed by



www.aaryanbuilders.com



**YOU ARE
RESPONSIBLE FOR
PARENTS & SPOUSE
AND THEIR**

HAPPINESS !!!

so we designed
WELL PLANNED ELEGANT ARCHITECTURE
DEVELOPED IN NEW RESIDENTIAL SOBO ZONE
COMFORT LIVING FOR EACH FAMILY MEMBER



**YOU ALWAYS
WORRY ABOUT
SECURITY AND**

SAFETY !!!



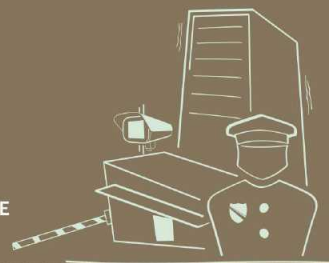
so we provide

ALLOTTED CAR PARKING

3 LAYERED SECURITY

SCHOOL BUS PICK UP ZONE

EARTH QUAKE PROOF STRUCTURE





EVERYONE WANTS TO
LIVE A GOOD LIFESTYLE
WHY NOT

YOU !!!



so we dedicate space for
LUSH GREEN GARDEN
INDOOR/OUTDOOR SPORTS
CLUBHOUSE
BANQUET HALL
CHILDREN'S PLAY AREA





IN BUSY LIFE
YOU
NEED A BREAK,
NOW & THEN!!!

so we have surrounded you with
CLASSY AMENITIES
RECREATIONAL ZONE



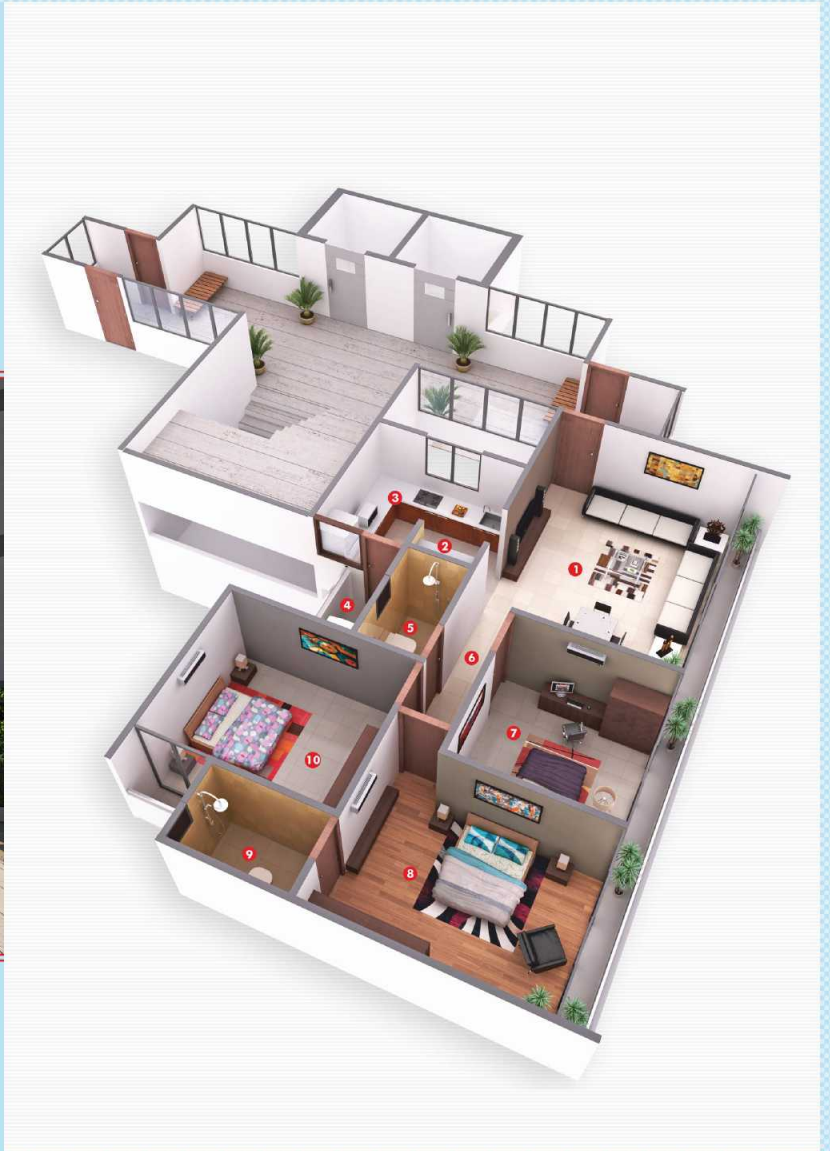
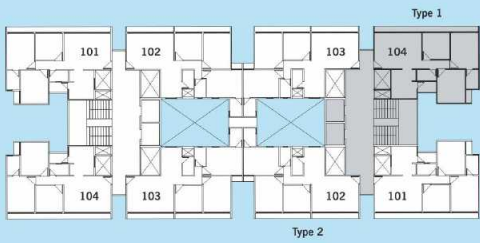
SITE PLAN



aaryan gloria
a beginning of life.



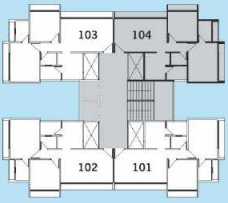
BLOCK - A B C D - 3BHK



aaryan
gloria
a beginning
of life

1. DRAWING ROOM/DINING	13'-0" X 17'-0"
2. STORE	4'-0" X 1'-6"
3. KITCHEN	10'-6" X 9'-3"
4. WASH	3'-9" X 6'-9"
5. TOILET	4'-0" X 7'-0"
6. WIDE PASSAGE	3'-0"
7. BEDROOM	9'-9" X 10'-0"
8. BEDROOM	13'-0" X 10'-0"
9. TOILET	7'-0" X 4'-6"
10. BEDROOM	12'-0" X 10'-0"

BLOCK - E H - 2BHK

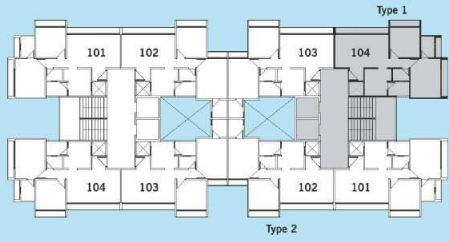


aaryan
gloria
a beginning
of life

1. DRAWING ROOM/DINING	18'-0" X 11'-0"
2. STORE	1'-6" X 4'-0"
3. KITCHEN	7'-6" X 9'-0"
4. WASH	7'-0" X 4'-9"
5. TOILET	5'-6" X 4'-0"
6. WIDE PASSAGE	3'-0"
7. BEDROOM	10'-0" X 10'-0"
8. TOILET	4'-6" X 7'-0"
9. BEDROOM	10'-0" X 13'-0"



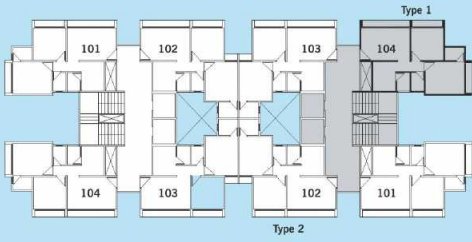
BLOCK - F G - 2BHK



aaryan
gloria
a beginning
of life

- | | |
|------------------------|-----------------|
| 1. FOYER | 4'-6" X 4'-9" |
| 2. DRAWING ROOM/DINING | 11'-0" X 18'-0" |
| 3. STORE | 4'-0" X 1'-6" |
| 4. KITCHEN | 9'-0" X 7'-6" |
| 5. WASH | 4'-9" X 7'-0" |
| 6. TOILET | 4'-0" X 5'-6" |
| 7. WIDE PASSAGE | 3'-0" |
| 8. BEDROOM | 10'-0" X 10'-0" |
| 9. TOILET | 7'-0" X 4'-6" |
| 10. BEDROOM | 13'-0" X 10'-0" |

BLOCK - I J K L - 2BHK



aaryan
gloria
a beginning
of life

- | | |
|------------------------|-----------------|
| 1. DRAWING ROOM/DINING | 10'-0" X 15'-0" |
| 2. KITCHEN | 9'-0" X 7'-0" |
| 3. WASH | 5'-9" X 4'-0" |
| 4. TOILET | 5'-9" X 4'-0" |
| 5. WIDE PASSAGE | 3'-0" |
| 6. BEDROOM | 10'-0" X 10'-0" |
| 7. TOILET | 6'-0" X 4'-0" |
| 8. BEDROOM | 12'-0" X 10'-0" |

SPECIFICATION

Color :
Internal - putty finish, External - apex / texture.

Doors & windows :
Main Door : Wooden frame with laminate finished door.
Other Doors : Wooden frame with painted flush door.
Window : Anodized aluminum sliding window with marble frame.

Electrification :
Three phase copper wiring with modular switches.

Kitchen :
Vitrified tiles flooring, Granite platform with S.S. sink and ceramic tiles dado upto lintel level.

Toilet & plumbing :
Floor and dado by ceramic tiles up to lintel level, Good quality C.P. fittings and sanitary ware.

Kitchen yard :
Kota stone flooring with 3' high tiles dado.

Flooring :
Vitrified flooring in all rooms.

Completed Projects



AARYAN CRYSTAL @ GOTA



AARYAN PRIDE @ GOTA



AARYAN CITY @ GOTA



AARYAN 60 @ GOTA

On Going Projects



AARYAN EMINENT @ S.G. ROAD



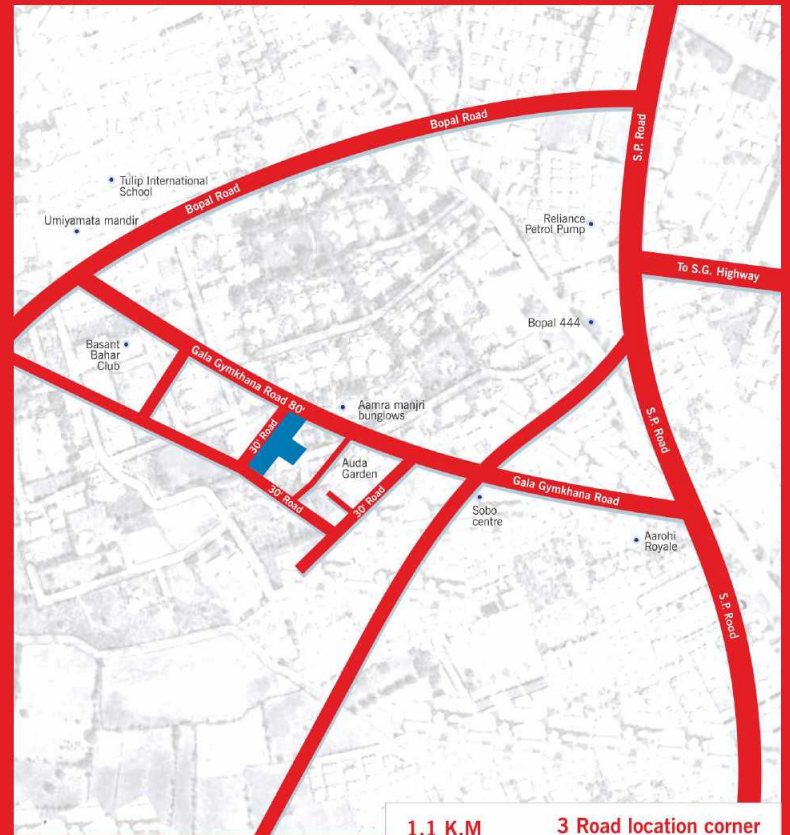
AARYAN EUPHORIA @ S.G. ROAD



AARYAN EMBASSY @ AMBLI

Rules & Regulations :

Stamp duty, registration legal document, service tax, A.U.D./G.E.B charges shall be borne by the purchaser. | Any additional charges, taxes, cess or duties levied by the Govt / local authorities during or after the completion of the project will be borne by the purchaser. | In the interest of continual development in design & quality of construction the developer reserves all rights to make any changes in the scheme. | Changes/ alterations of the scheme are strictly NOT PERMITTED during & after the completion of the project. | This Brochure is intended only to convey the essential design and technical feature of the project & shall not be considered to form part of the legal document.



1.1 K.M from S.P. Ring Road.
3 Road location corner at Gala Gymkhana Road.

Site : Gala Gymkhana Road, South Bopal, Ahmedabad.

Contact : 90330 14441

Developers :



Aaryan Infrabuild Pvt Ltd
www.aaryanbuilders.com

Architect : 9th street
Saurabh Varma

brm

aaryan
gloria a beginning
of life

aaryan
gloria a beginning
of life