









WATERFALL RESIDENCES



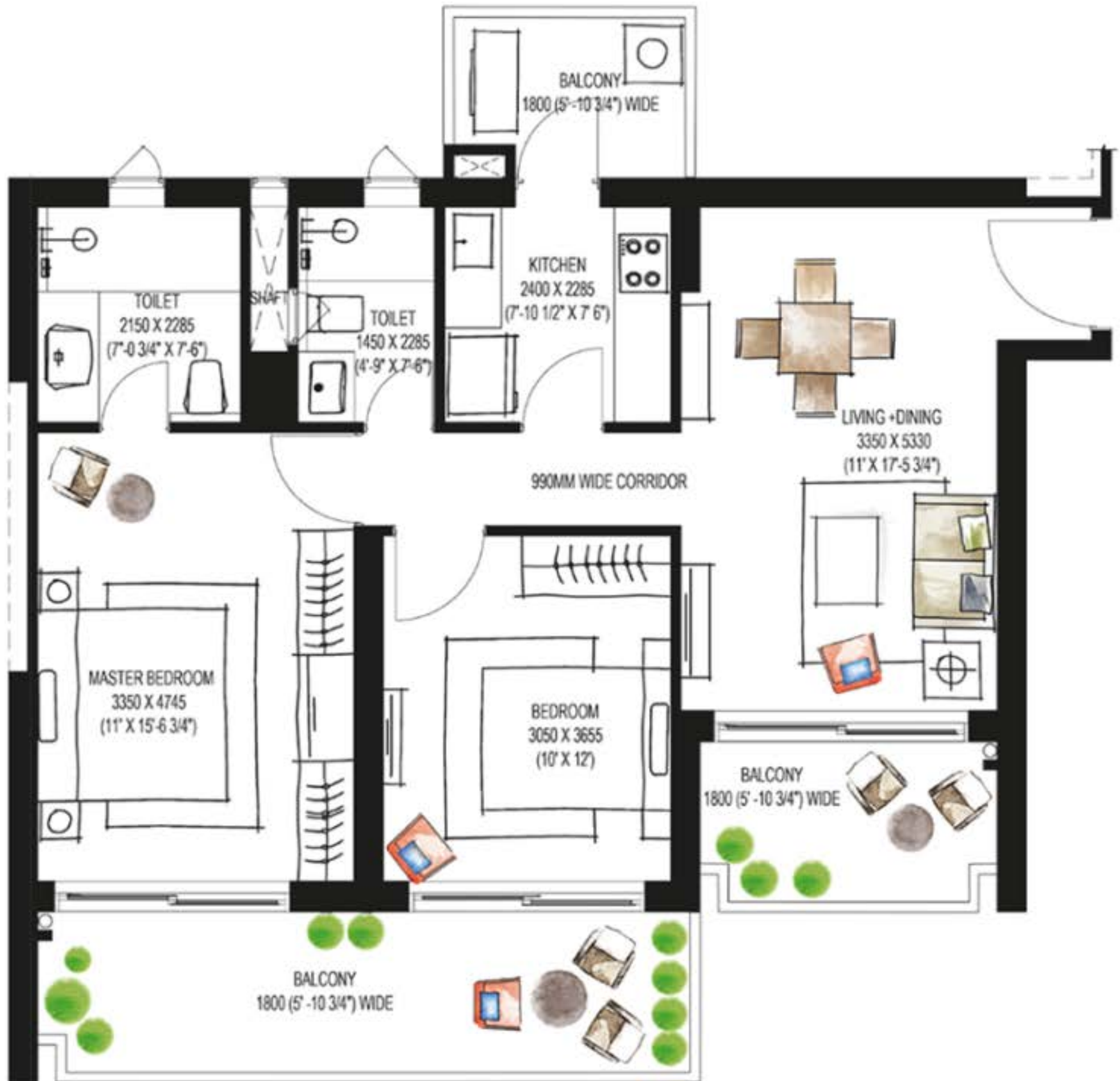


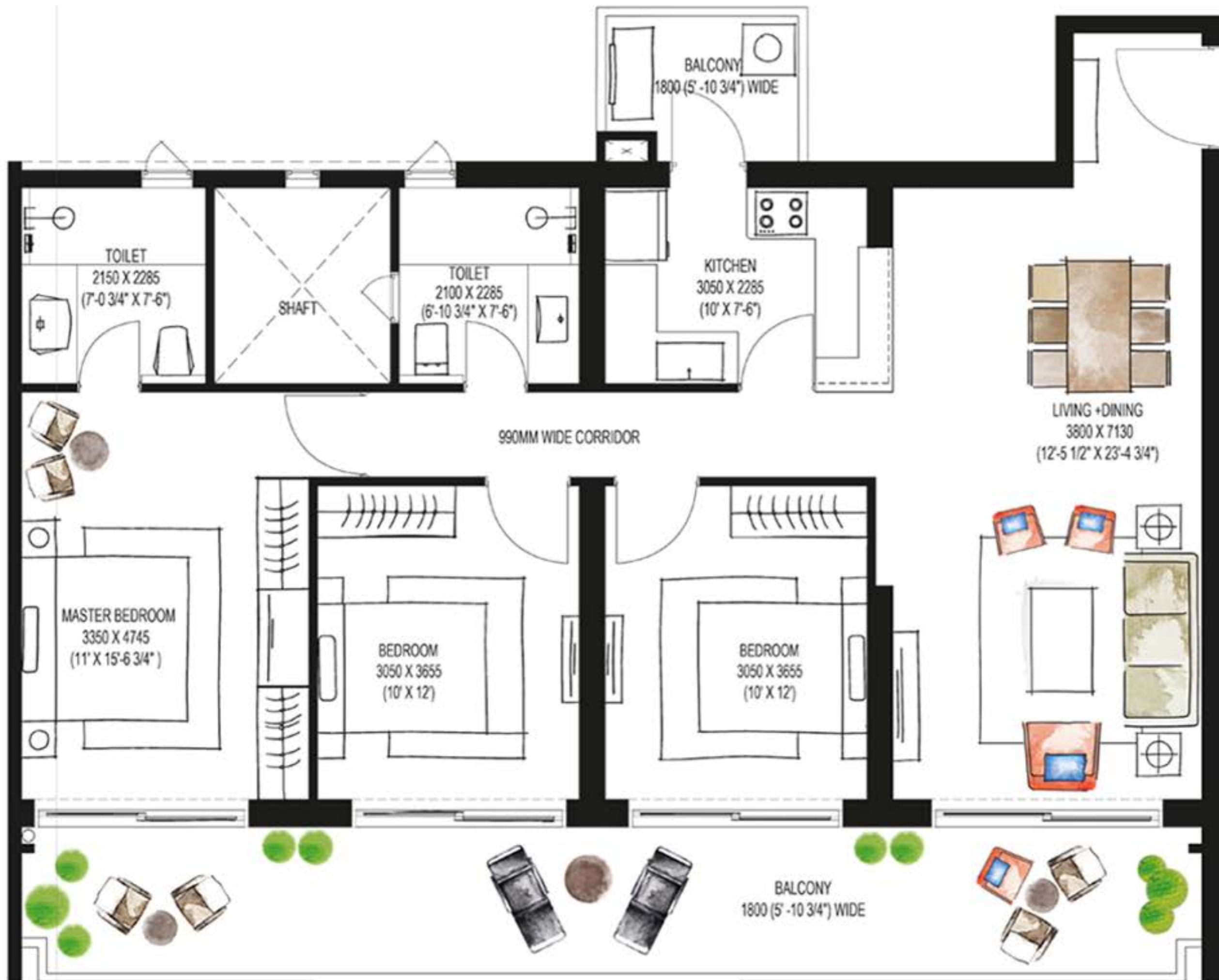


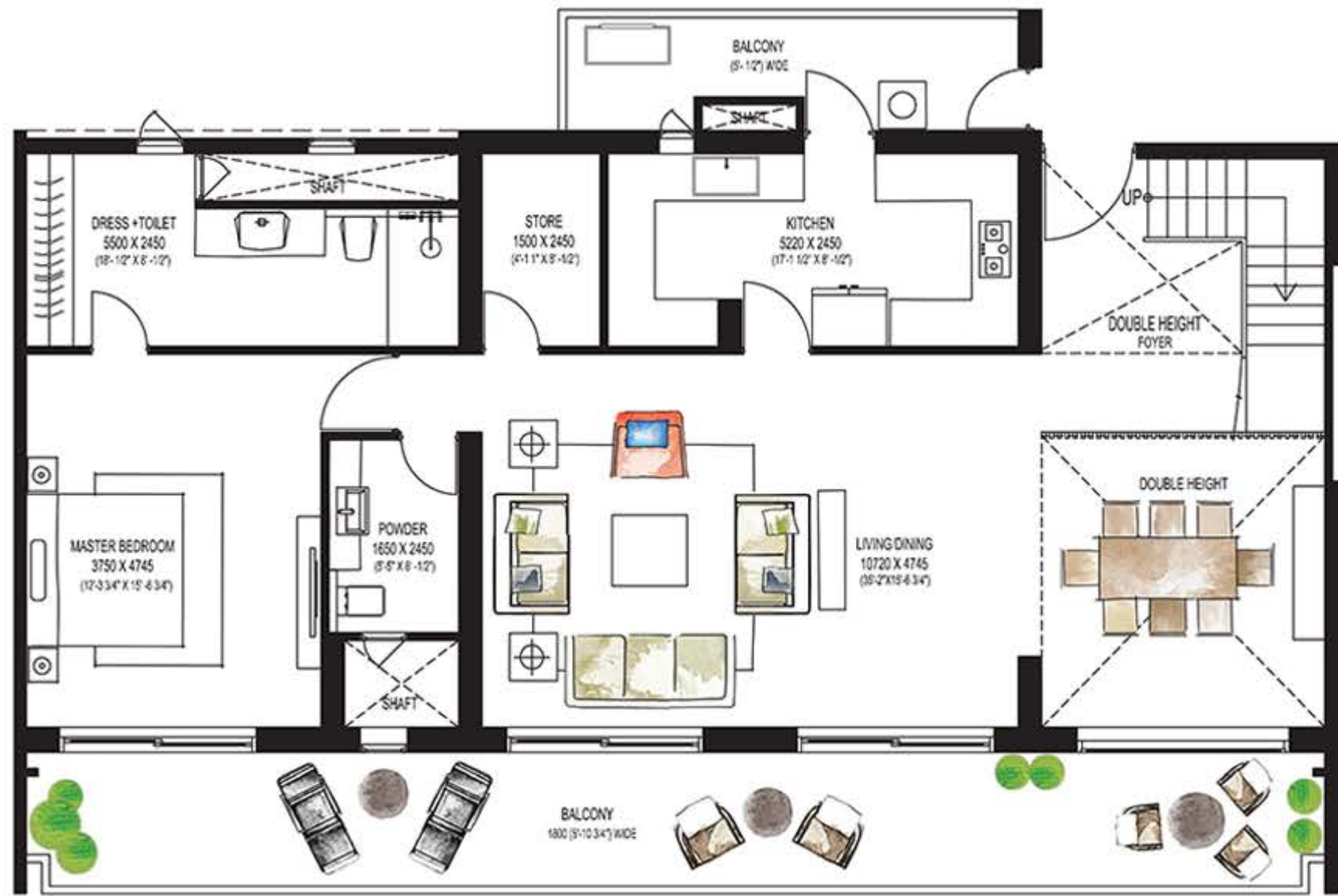




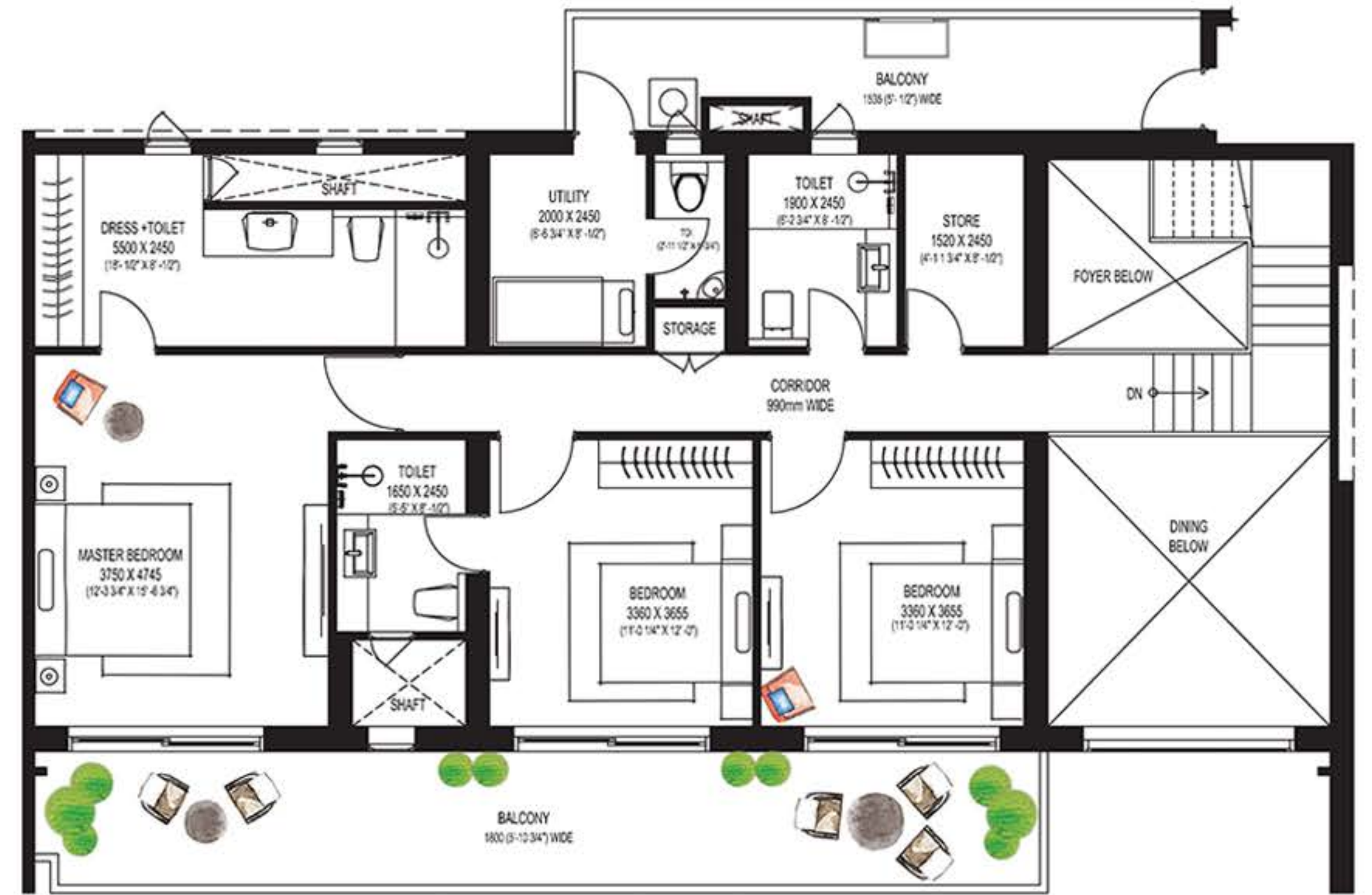








LOWER FLOOR PLAN

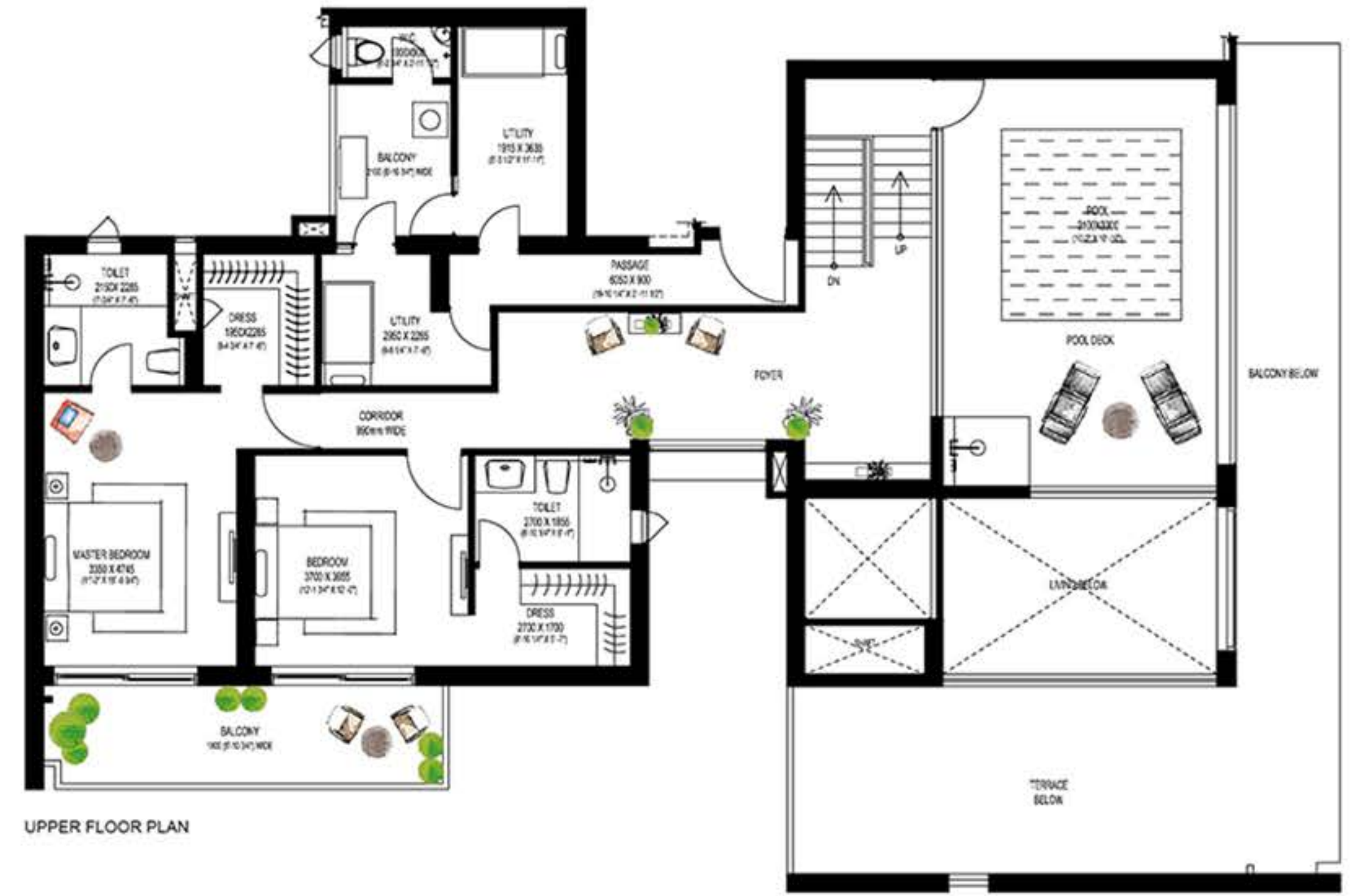


UPPER FLOOR PLAN

PENTHOUSE(A1)	
Carpet Area	2247.95 Sq. Ft (208.84 Sq. Mtr)
Exclusive Area	3355.68 Sq. Ft (311.75 Sq. Mtr)
Saleable Area	4429.50 Sq. Ft (411.51 Sq. Mtr)



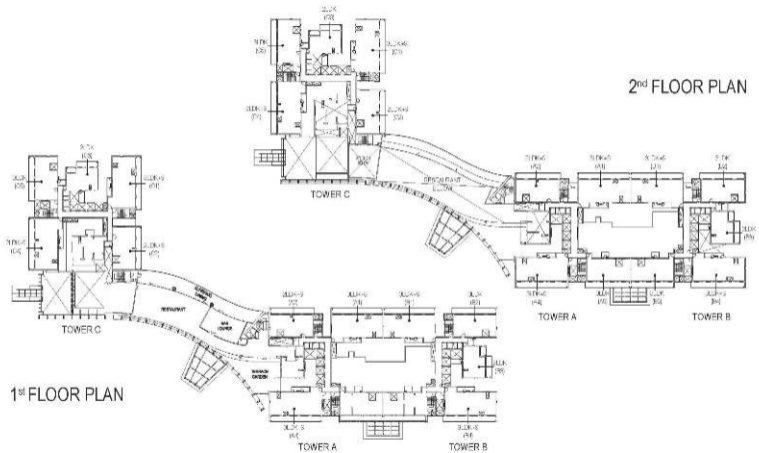
LOWER FLOOR PLAN



UPPER FLOOR PLAN

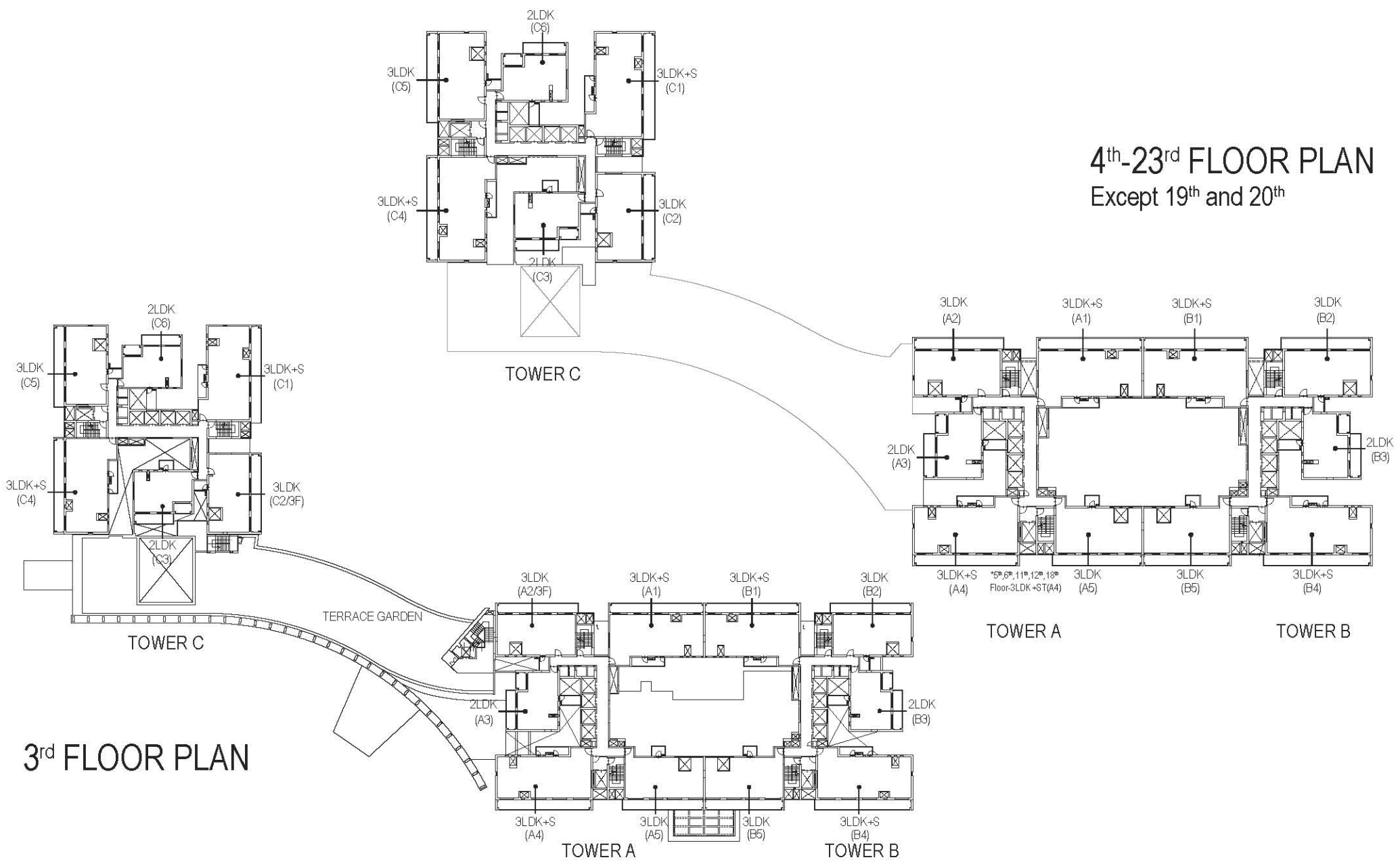
PENTHOUSE+POOL(A2)

Carpet Area	2898.96 Sq. Ft (269.32 Sq. Mtr)
Exclusive Area	4812.90 Sq. Ft (447.13 Sq. Mtr)
Saleable Area	6353.03 Sq. Ft (590.21 Sq. Mtr)



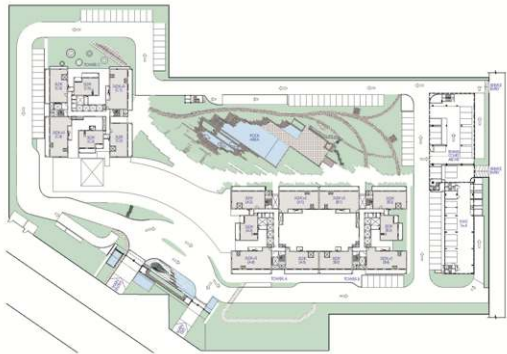
1st FLOOR PLAN

2nd FLOOR PLAN



4th-23rd FLOOR PLAN
 Except 19th and 20th

3rd FLOOR PLAN





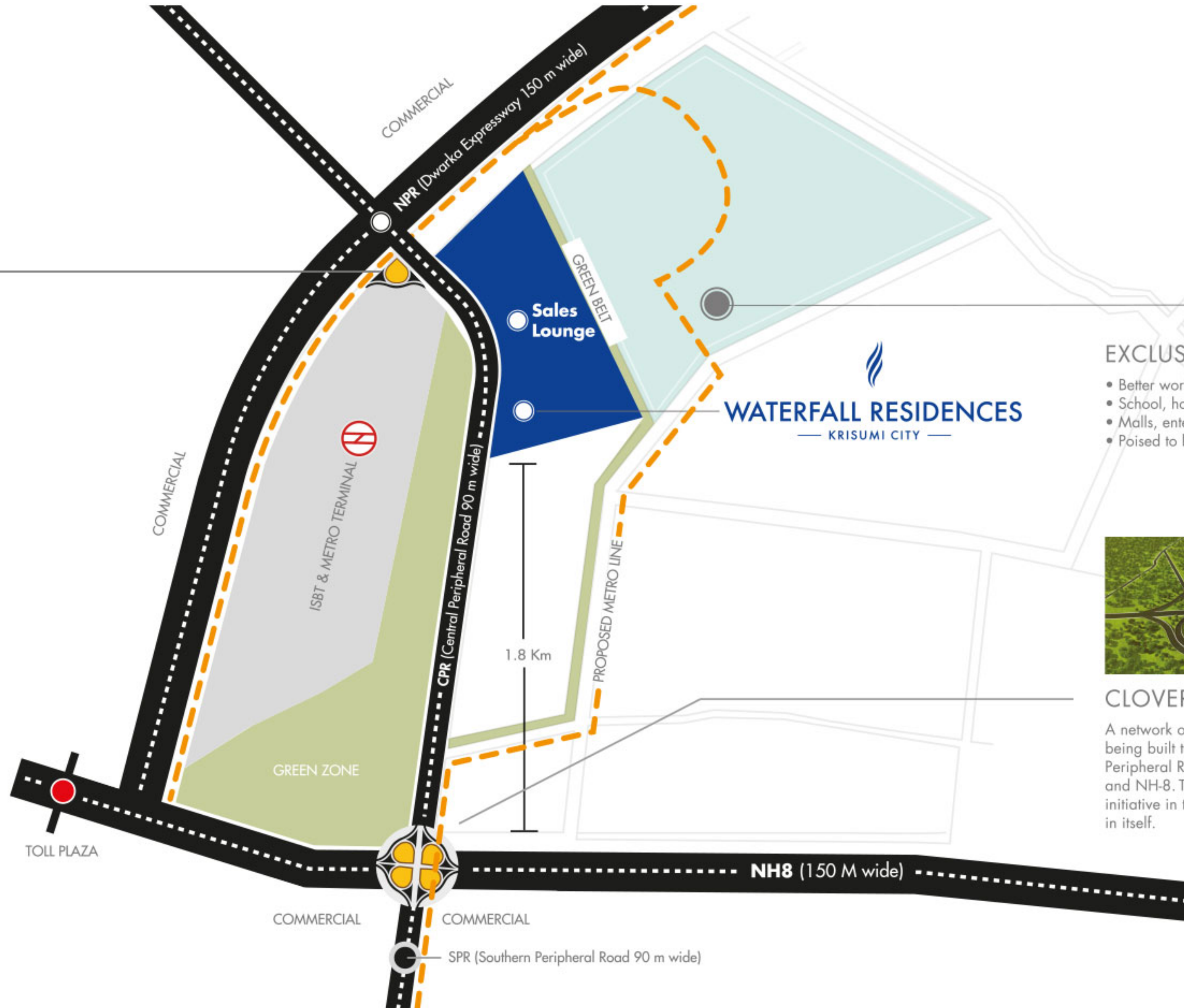
TRUMPET JUNCTION

National Highway Authority of India is building a trumpet junction between Dwarka Expressway and CPR. This junction will merge with the clover leaf connecting CPR, NH-8 and SPR, providing unrestricted access to all parts of Gurugram.

UNPARALLELED CONNECTIVITY

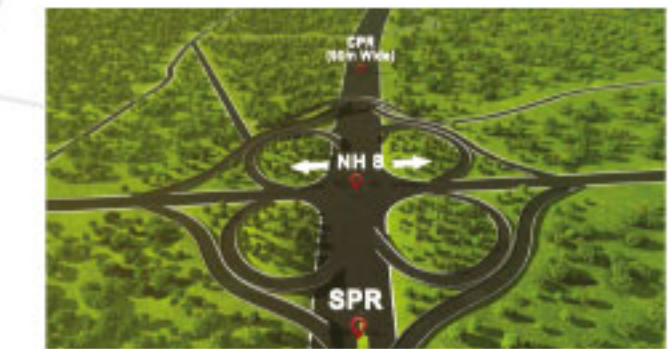
- 2 of the widest roads in Gurugram - Northern Peripheral Road (NPR) and Central Peripheral Road (CPR)
- National Highway-8 (NH-8) is the main arterial road for the city of Gurugram
- 3 minutes drive to NH-8
- Mass Rapid Transit System is planned along NPR and CPR
- CPR links Dwarka Expressway (NPR), with Southern Peripheral Road (SPR)
- Flanked by 220 acres of Green Zone and 50 meters Green Belt
- Spread between 2 commercial zones
- Adjacent to Global City - the newest business centre-in Gurugram
- Unhindered connectivity to Indira Gandhi International Airport.

The distances depicted by this map are approximate and are not necessarily accurate to surveying or engineering standards. The map shown here are for illustration purposes only. It does not represent an on-the-ground survey and represents only the approximate relative location of property boundaries.



EXCLUSIVITY OF GLOBAL CITY

- Better work opportunities
- School, hospitals, police/fire stations
- Malls, entertainment, retail and other utilities.
- Poised to be another big IT/ITES centre



CLOVER LEAF FLYOVER

A network of roads and flyovers including a clover leaf is being built to provide seamless access between Southern Peripheral Road (SPR), Central Peripheral Road (CPR) and NH-8. This would be the largest road infrastructure initiative in the city of Gurugram, making it a landmark in itself.





The materials used, create a perfect fusion of minimal design aesthetics and grand Indian hospitality, which showcase a life simply sophisticated.

APARTMENT SPECIFICATIONS:

LIVING/DINING/CORRIDOR

Floor
Engineered wooden flooring

Walls
Acrylic emulsion paint

Ceiling (Living Dining)
Acrylic emulsion paint

Ceiling (Corridor)
Acrylic emulsion paint on false ceiling

TV LOUNGE

Floor
Engineered wooden flooring

Walls
Acrylic emulsion paint

Ceiling
Acrylic emulsion paint

KITCHEN

Floor
Vitrified tiles

Walls
Tiles and acrylic emulsion paint

Ceiling
Acrylic emulsion paint on false ceiling

Counter
Granite stone

Fittings & Fixtures
Premium quality CP fittings, sink with drain board

Appliances
Modular kitchen with hob and chimney

MASTER BEDROOM

Floor
Premium quality Laminated wooden flooring

Walls
Acrylic emulsion paint

Ceiling
Acrylic emulsion paint

BEDROOM

Floor
Premium quality Laminated wooden flooring

Walls
Acrylic emulsion paint

Ceiling
Acrylic emulsion paint

TOILET

Floor
Vitrified tiles

Walls
Vitrified tiles

Ceiling
Acrylic emulsion paint on false ceiling

Counters
Granite stone

Sanitary Ware
TOTO or equivalent

C.P fittings
Grohe or equivalent

SERVANT ROOM

Floor
Tiles

Walls & Ceiling
Oil bound distemper

Toilet
Anti-skid tile flooring, and oil bound distemper on walls

STUDY ROOM

Floor
Engineered wooden flooring

Walls & Ceiling
Acrylic emulsion paint

STORE ROOM

Floor
Tiles

Walls & Ceiling
Oil bound distemper

BALCONIES (MAIN)

Floor
Anti-skid Tiles

Walls & Ceiling
Exterior paint

Railing
Glass railing with SS balusters

BALCONIES (UTILITY)

Floor
Anti-skid Tiles

Walls & Ceiling
Exterior paint

Railing
MS Railing

DOORS

Entrance door
Modular door with veneer and polish (2.4m High)

Internal doors
Modular door with laminate (2.4m High)

Servant Toilet Door
Flush door with enamel paint (2.1m High)

EXTERNAL GLAZING

Aluminum glazed door and window

AIR CONDITIONING

VRV air-conditioning system with one outdoor module for the entire apartment

Ductable unit in Living Dining

ELECTRICAL FIXTURES & FITTINGS

Modular switches

LED lighting fixtures in balconies, toilet, kitchen and corridor

POWER BACK-UP

100% power back up

LPG PIPED GAS SYSTEM

Uninterrupted LPG gas supply to every Kitchen through a network of safe piping with individual gas meter

COMMON AREAS SPECIFICATIONS:

ENTRANCE LOBBIES

Floor
Stone flooring

Walls
Combination of stone, veneered paneling, metal and acrylic emulsion paint

Ceiling
Veneered paneling and false ceiling with Acrylic emulsion paint

All the lobbies are Air-conditioned

APARTMENT FLOOR LOBBIES

Floor
Vitrified tile

Walls
Combination of wooden laminated paneling and acrylic emulsion paint

Ceiling
False ceiling with Acrylic emulsion paint

All the lobbies are Air-conditioned

ELEVATORS

4 High speed passenger elevators with 1 service elevator in each tower. As a special security feature, each tower has 2 shuttle elevators from the basement

FIRE FIGHTING SYSTEM

A Synchronized firefighting system with fire sprinkles, hydrant, hose reel, smoke detector, heat detection and fire curtain system as per norms

Pressurized staircases, lift lobbies and lift Shafts for better fire safety