





939

Apartments



**4.9 Acres of
Project Land with
only 4 Towers**





SKA

SKA Green
Starting From 28.67 lac onwards
CALL: 7505771212
HDFC BANK, Indiabulls, ICICI Bank

Talented Luxury With Innovative Construction Technology
SKA Green

SKA Green
Starting From 28.67 lac onwards
CALL: 7505771212

SKA Green
Starting From 28.67 lac onwards
CALL: 7505771212





UPRERAPR13377 Tallest Luxury With International Construction Technology

SKA Greenarch

Actual Flat & Entrance Lobby Ready

STARTING FROM **28.67 Lac** Onwards

2/3 BHK Luxurious Apartments | Gr. Noida (W)
GH-059, Sector-16-B, G. Noida (West)

CALL: 7505771212

HDFC BANK Indiabulls ICICI Bank TATA CAPITAL







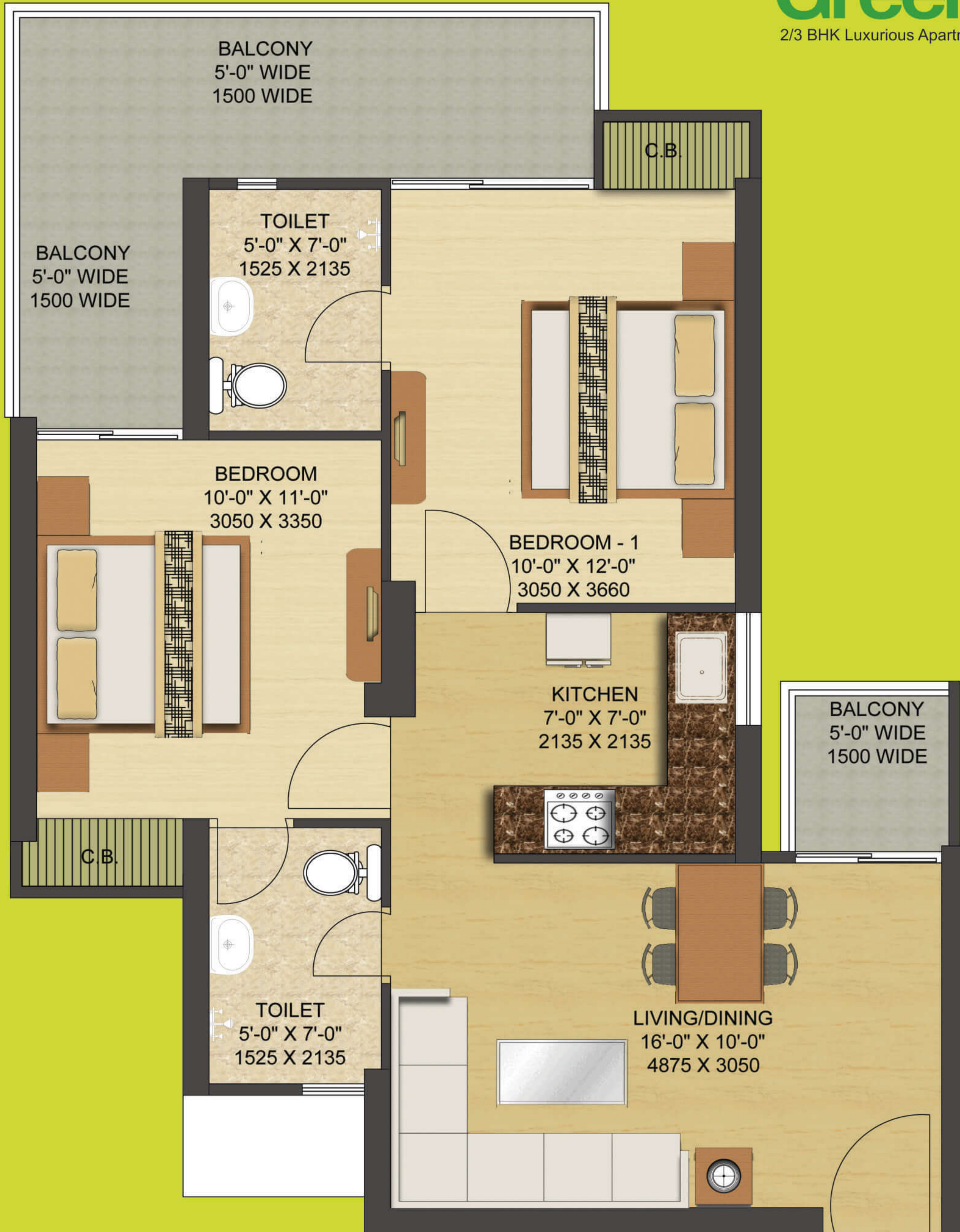


BALCONY





FLOOR PLANS



ASTER TOWER/ZINNIA TOWER

ENTRY



TYPE - M - I

UNIT NO. - 1, 2, 3, 6, 7, 8, 26, 27, 28, 31, 32, 33

Carpet Area = 562.00 sq. ft. / 52.21 sq. mt. | Balcony Area = 140.00 sq. ft. / 13.00 sq. mt.
External Wall and Column Area = 74.00 sq. ft. / 6.87 sq. mt. | Common Area = 224.00 sq. ft. / 20.82 sq. mt.
Total Area = 1000.00 sq. ft. / 92.90 sq. mt.

FLOOR PLANS



ASTER TOWER/ZINNIA TOWER



ORCHID TOWER/TULIP TOWER



TYPE - S - II

UNIT NO. - 4, 5, 9, 10, 11, 15, 16, 17, 18, 19, 20, 23, 24, 25, 29, 30

Carpet Area = 715.00 sq. ft. / 66.43 sq. mt. | Balcony Area = 180.00 sq. ft. / 16.73 sq. mt.
External Wall and Column Area = 70.00 sq. ft. / 6.46 sq. mt. | Common Area = 255.00 sq. ft. / 23.72 sq. mt.
Total Area = 1220.00 sq. ft. / 113.34 sq. mt.

FLOOR PLANS



ORCHID TOWER/TULIP TOWER



**TYPE - S - I
UNIT NO. - 12, 14, 21, 22**

Carpet Area = 945.00 sq. ft. / 87.79 sq. mt. | Balcony Area = 215.00 sq. ft. / 19.98 sq. mt.
External Wall and Column Area = 110.00 sq. ft. / 10.16 sq. mt. | Common Area = 330.00 sq. ft. / 30.72 sq. mt.
Total Area = 1600.00 sq. ft. / 148.65 sq. mt.

ROAD MAP



SITE LAYOUT



LEGEND

- ENTRY GATE
- ENTRANCE PLAZA
- DROP-OFF PLAZA
- PATHWAY/JOGGING TRACK
- TENSILE SHELTER WITH SEATING BELOW
- KIDS PLAY AREA
- HALF BASKETBALL COURT
- GREEN LAWN
- PRAY AREA
- SWIMMING POOL
- KIDS' POOL
- POOL DECK
- AMPHITHEATER
- BADMINTON COURT
- SKATING RINK
- REFLEXOLOGY PATH
- ESS
- LOCAL SHOPPING COMPLEX
- CRICKET PITCH
- CLUB BUILDING



S-I	16	Park	54.88	6.25	61.13
S-II	15	Road	42.05	5.28	47.33
M-1	15	Road	33.00	4.45	37.45
S-II	15	Park	42.05	5.59	47.64
M-I	15	Park	33.00	4.70	37.70
S-I	15	Park	55.20	6.25	61.45
S-II	14	Road	42.31	5.28	47.59
M-1	14	Road	33.20	4.45	37.65
S-II	14	Park	42.31	5.59	47.90
M-I	14	Park	33.20	4.70	37.90
S-I	14	Park	55.52	6.25	61.77
S-II	13	Road	42.55	5.28	47.83
M-1	13	Road	33.40	4.45	37.85
S-II	13	Park	42.55	5.59	48.14
M-I	13	Park	33.40	4.70	38.10
S-I	13	Park	55.84	6.25	62.09
S-II	12	Road	42.79	5.28	48.07
M-1	12	Road	33.60	4.45	38.05
S-II	12	Park	42.79	5.59	48.38
M-I	12	Park	33.60	4.70	38.30
S-I	12	Park	56.16	6.25	62.41
S-II	11	Road	43.03	5.28	48.31
M-1	11	Road	33.80	4.45	38.25
S-II	11	Park	43.03	5.59	48.62
M-I	11	Park	33.80	4.70	38.50
S-I	11	Park	56.48	6.25	62.73
S-II	10	Road	43.27	5.28	48.55
M-1	10	Road	34.00	4.45	38.45
S-II	10	Park	43.27	5.59	48.86
M-I	10	Park	34.00	4.70	38.70
S-I	10	Park	56.80	6.25	63.05
S-II	9	Road	43.54	5.28	48.82
M-1	9	Road	34.20	4.45	38.65
S-II	9	Park	43.54	5.59	49.13
M-I	9	Park	34.20	4.70	38.90
S-I	9	Park	57.12	6.25	63.37
S-II	8	Road	43.78	5.28	49.06
M-1	8	Road	34.40	4.45	38.85
S-II	8	Park	43.78	5.59	49.37
M-I	8	Park	34.40	4.70	39.10
S-I	8	Park	57.44	6.25	63.69
S-II	7	Road	44.02	5.28	49.30
M-1	7	Road	34.60	4.45	39.05
S-II	7	Park	44.02	5.59	49.61
M-I	7	Park	34.60	4.70	39.30
S-I	7	Park	57.76	6.25	64.01
S-II	6	Road	44.24	5.28	49.52
M-1	6	Road	34.80	4.45	39.25
S-II	6	Park	44.24	5.59	49.83
M-I	6	Park	34.80	4.70	39.50
S-I	6	Park	58.08	6.25	64.33
S-II	5	Road	44.48	5.28	49.76
M-1	5	Road	35.00	4.45	39.45
S-II	5	Park	44.48	5.59	50.07
M-I	5	Park	35.00	4.70	39.70
S-I	5	Park	58.40	6.25	64.65
S-II	4	Road	44.76	5.28	50.04
M-1	4	Road	35.20	4.45	39.65
S-II	4	Park	44.76	5.59	50.35
M-I	4	Park	35.20	4.70	39.90
S-I	4	Park	58.72	6.25	64.97
S-II	3	Road	45.00	5.28	50.28
M-1	3	Road	35.40	4.45	39.85
S-II	3	Park	45.00	5.59	50.59
M-I	3	Park	35.40	4.70	40.10
S-I	3	Park	59.04	6.25	65.29
S-II	2	Road	45.24	5.28	50.52
M-1	2	Road	35.60	4.45	40.05
S-II	2	Park	45.24	5.59	50.83
M-I	2	Park	35.60	4.70	40.30
S-I	2	Park	59.36	6.25	65.61
S-II	1	Road	45.48	5.28	50.76
M-1	1	Road	35.80	4.45	40.25
S-II	1	Park	45.48	5.59	51.07
M-I	1	Park	35.80	4.70	40.50
S-I	1	Park	59.68	6.25	65.93

PAYMENT PLAN-TULIP / ZINNIA (S-II)

	SKA Greenarch	
1	At the time of booking	10.00%
2	Within 45 days	15.00%
3	On Start of 18th Floor	25.00%
4	On Start of 22nd Floor	15.00%
5	On Start of 26th Floor	15.00%
6	On Start of top Floor	10.00%
7	At the time of offer Possession	10.00%

PAYMENT PLAN-ASTER/ORCHID

	SKA Greenarch	
1	At the time of booking	10.00%
2	On offer of possession	90.00%

PAYMENT PLAN-ZINNIA (M1)

	SKA Greenarch	
1	At the time of booking	5.00%
2	Within 45 days	20.00%
3	On Start of 14th Floor	10.00%
4	On Start of 22th Floor	10.00%
5	On Start of top Floor	25.00%
6	At the time of offer Possession	30.00%

