



Image for representation purpose only



Call us Toll-Free: 1800 258 6424 | [www.theeurekapark.com](http://www.theeurekapark.com)

Site Address: Eureka Park, Land Kart Builders Pvt Ltd. SC-01 A1, Sector-150, Noida 201310 Uttar Pradesh

UPRERA Registration No. – Eureka Park Phase I - UPRERAPRJ5448 Valid up to 31 March, 2023 available at [www.up-rera.in/](http://www.up-rera.in/)

Disclaimer: This is not an offer or invitation to offer. This Brochure is purely conceptual. The information contained in the Brochure including elevations, photographs, visuals, pictures, images, details, specifications, dimensions, amenities, facilities etc. are strictly provided for representative and illustrative purposes. The Company reserves the right to change/revise/ amend the same at its sole discretion without any prior notice and obligation. Area, price, amenities, specifications, designs and facilities provided in the Agreement shall be final and binding. Distance and timelines are tentative and approximate subject to road and infrastructure facilities provided by the appropriate authorities. The project is developed and promoted by Land Kart Builders Pvt. Ltd. (a subsidiary of Tata Value Homes Limited and Lotus Greens Constructions Pvt. Ltd.).

#HomeSmartHome



Image for representation purpose only



# CRAFTING INNOVATION. ENRICHING LIFESTYLES.

Eureka Park is developed and promoted by Land Kart Builders Pvt. Ltd. which is a subsidiary of TATA Value Homes Limited and Lotus Greens Constructions Pvt. Ltd.

## ABOUT TATA VALUE HOMES AND ITS GROUP COMPANIES.

Tata Value Homes and its group companies have been formed with a vision of improving the quality of lives and creating communities that can fulfill the entire nation's dream of owning a home. Being the most trustworthy name in the real estate sector, Tata Value Homes with its group companies, have successfully garnered the trust of customers across the nation. They have more than 53 residential, commercial, retail, IT and infrastructure projects sprawling across 15 cities.

### LANDMARK PROJECTS IN NORTH INDIA

#### RESIDENTIAL

OC RECEIVED



**PRIMANTI**  
VILLAS AND RESIDENCES

OC RECEIVED



**GURGAON GATEWAY**  
RESIDENCES

OC RECEIVED



**MYST**  
ECO-LUXURY RESIDENCES

PROJECT DELIVERED



**RAISINA**  
RESIDENCY  
Where art inspires life

UNDER CONSTRUCTION



**La VIDA**  
ESTATE RESIDENCES

UNDER CONSTRUCTION



**NEW HAVEN**  
BAHADURGARH

#### COMMERCIAL

DELIVERED



**TRILIUM AVENUE**

UNDER CONSTRUCTION



**Intellion**  
PARK

DELIVERED



**Intellion**  
EDGE

# EUREKA PARK : SMART, SECURED AND COMFORTABLE HOMES.

Nestled in one of the fastest growing premium locations of Noida, Eureka Park is a perfect fit for you and your family!

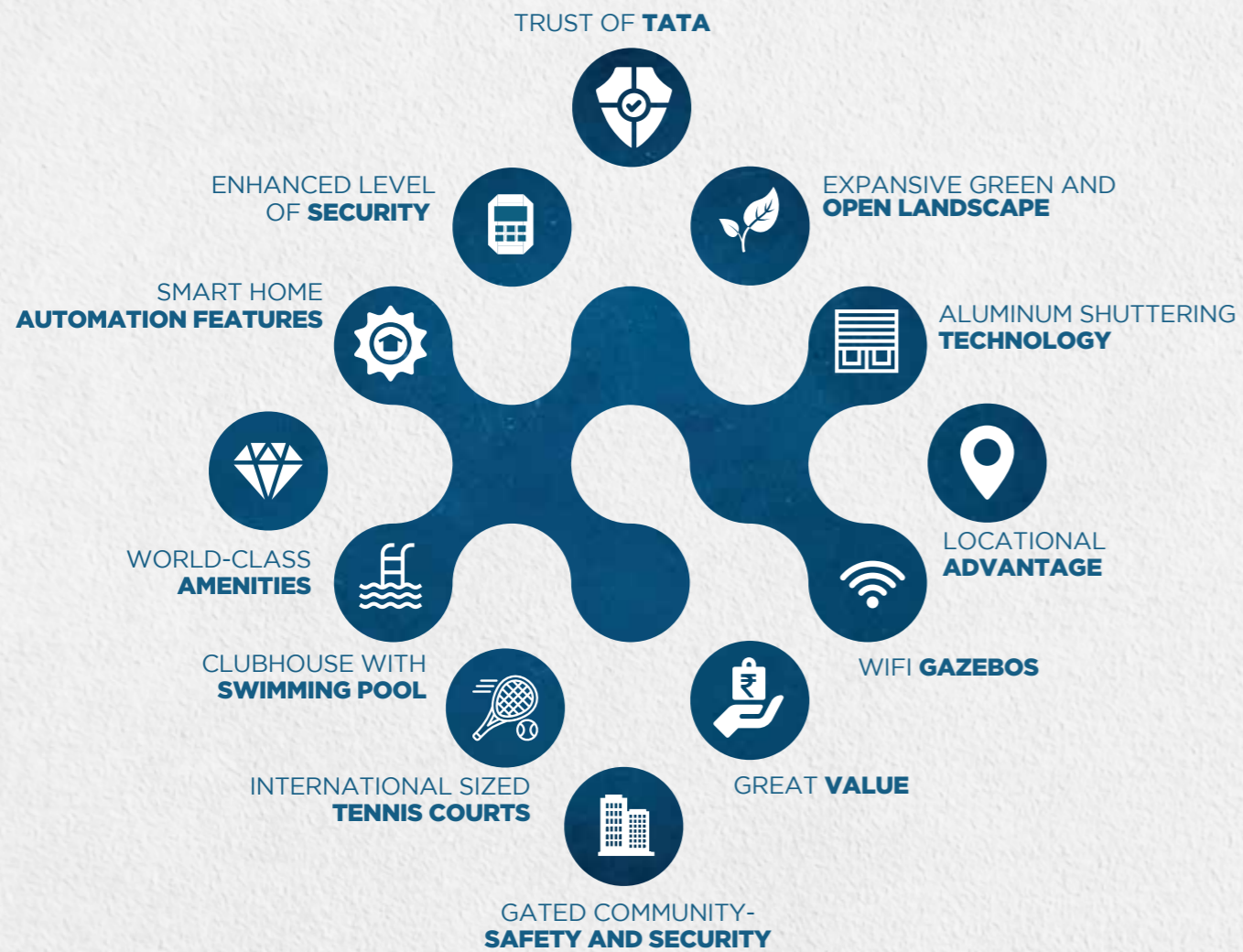
Created with the delightful combination of smart landscaping, smart design, smart location, home automation and a plethora of lifestyle amenities, the #HomeSmartHomes at Eureka Park are designed to fulfil all your wishes.

Be it being connected to world class entertainment, healthcare, and educational hubs, or enjoying serene walks in the midst of nature, or just reveling in the community of like minded families. Ask, and Eureka Park will not disappoint.

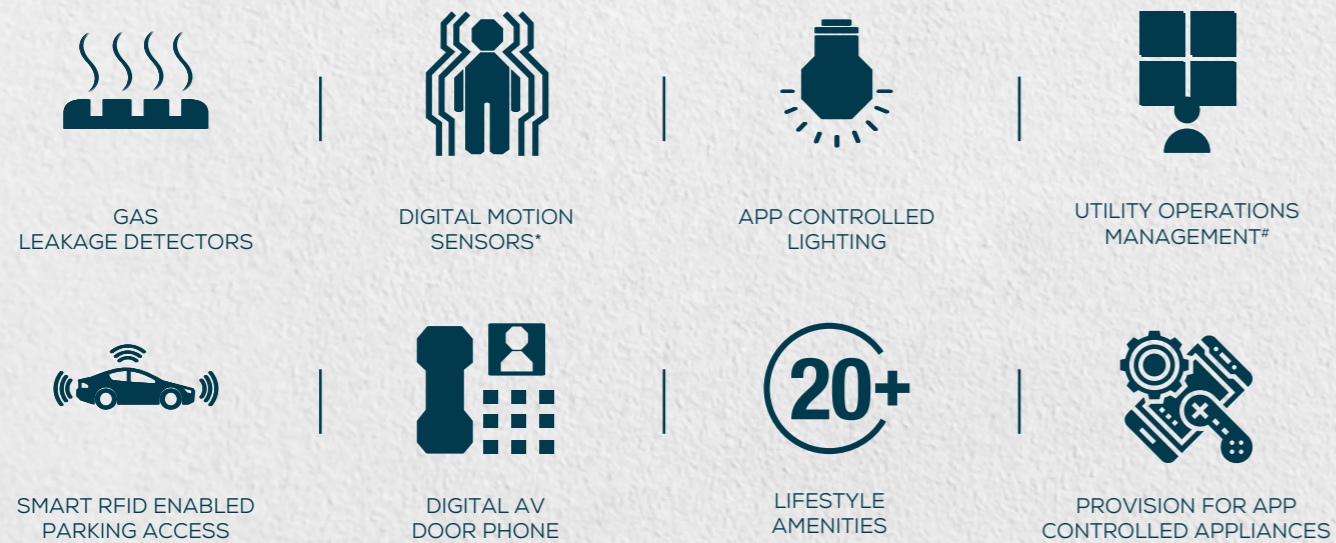




# 12 REASONS TO MOVE IN TO

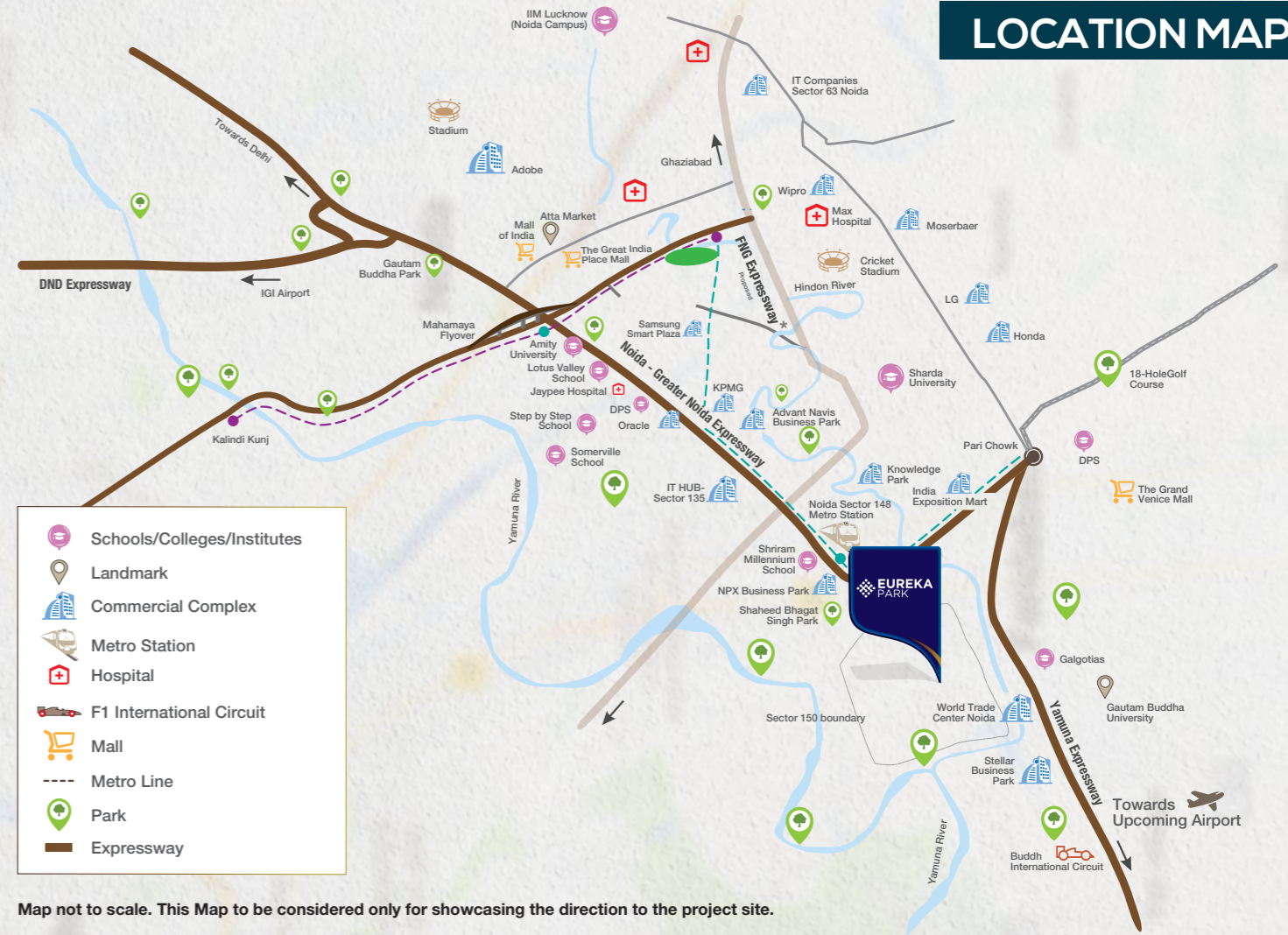


# A HOME FOR NOW AND THE FUTURE



\*Only in bathroom #To be operated by facilities manager

# LOCATION MAP



# SPLENDID NEIGHBOURHOOD



\*Proposed

Time as per google maps under ideal condition



# MASTER LAYOUT PLAN

TOTAL LAND AREA:  
20.74 ACRES

PHASE I AREA:  
11.96 ACRES

NO. OF TOWERS  
IN PHASE I: 10

PHASE II:  
FUTURE DEVELOPMENT



Image for representation purpose only.

■ TO BE DEVELOPED IN PHASE-I  
■ TO BE DEVELOPED IN PHASE-II

## LEGEND

### PHASE-I

- 01. SKATING TRACK
- 02. PALM COURT
- 03. COMMUNITY BUILDING & SPORTS BLOCK
- 04. SWIMMING POOL

- 05. KIDS' POOL
- 06. MULTIPURPOSE PARTY LAWN
- 07. GAZEBOS
- 08. CONVENIENT SHOPPING AREA
- 09. LANDSCAPED PLAZA SPACE
- 10. WALKING TRACK

- 11. OPEN SPACE FOR CULTURAL ACTIVITIES
  - 12. AMPHITHEATRE
  - 13. YOGA SQUARE
  - 14. EXERCISE GARDEN
- PHASE-II**
- 15. MULTIPURPOSE OPEN LAWN

- 16. KIDS' PLAY AREA
- 17. OPEN SEATING AREA
- 18. INTERNATIONAL SIZED TENNIS COURTS#
- 19. BADMINTON COURTS
- 20. BASKETBALL COURT
- 21. MULTIPURPOSE PARTY LAWN
- 22. PUTTING GREENS



# UNIT PLANS

Every unit in Eureka Park provides you premium comfort. With proper ventilation, natural light, spacious bedrooms, and refreshing balconies, our homes are built big to nurture your bigger dreams.

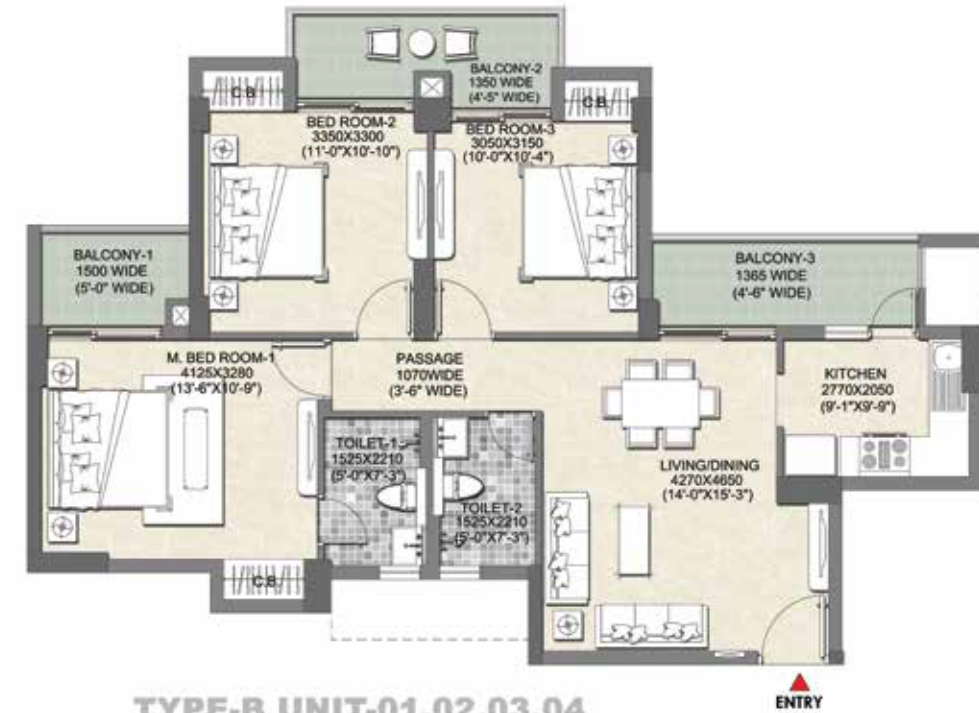
## INVENTORY DETAILS

NAME	CARPET AREA (SQ. MTR.)	BALCONY AREA (SQ. MTR.)	FLAT TYPE
INTELLO 1100	60.164	12.580	2 BHK
BRIGHTUS 1285	72.781	13.947	3 BHK + 2 TOILET
PRIMUS 1575	91.169	15.736	3 BHK + 3 TOILET + SERVANT TOILET

## BRIGHTUS

### TYPICAL UNIT TOWER-03 TO 10

**3 BHK,  
2 TOILET**



**TYPE-B UNIT-01,02,03,04**  
UNIT ORIENTATION AS PER TYPICAL FLOOR PLAN



**DISCLAIMERS:**  
All Dimensions are in millimeters (and in bracket feet inches)  
Measurements are approximate and subject to minor variations. Furnitures, fixtures and specifications provided in the plan are not part of the offered apartment for sale.

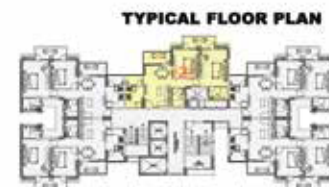
## INTELLO

### TYPICAL UNIT TOWER-01 TO 04

**2 BHK,  
2 TOILET**



**TYPE-A UNIT-02**  
UNIT ORIENTATION AS PER TYPICAL FLOOR PLAN



**DISCLAIMERS:**  
All Dimensions are in millimeters (and in bracket feet inches)  
Measurements are approximate and subject to minor variations. Furnitures, fixtures and specifications provided in the plan are not part of the offered apartment for sale.

## PRIMUS

### TYPICAL UNIT TOWER-19 TO 21

**3 BHK,  
3 TOILET  
SERV. TOILET**



**TYPE-C UNIT-01,02,03,04**  
UNIT ORIENTATION AS PER TYPICAL FLOOR PLAN



**DISCLAIMERS:**  
All Dimensions are in millimeters (and in bracket feet inches)  
Measurements are approximate and subject to minor variations. Furnitures, fixtures and specifications provided in the plan are not part of the offered apartment for sale.



