

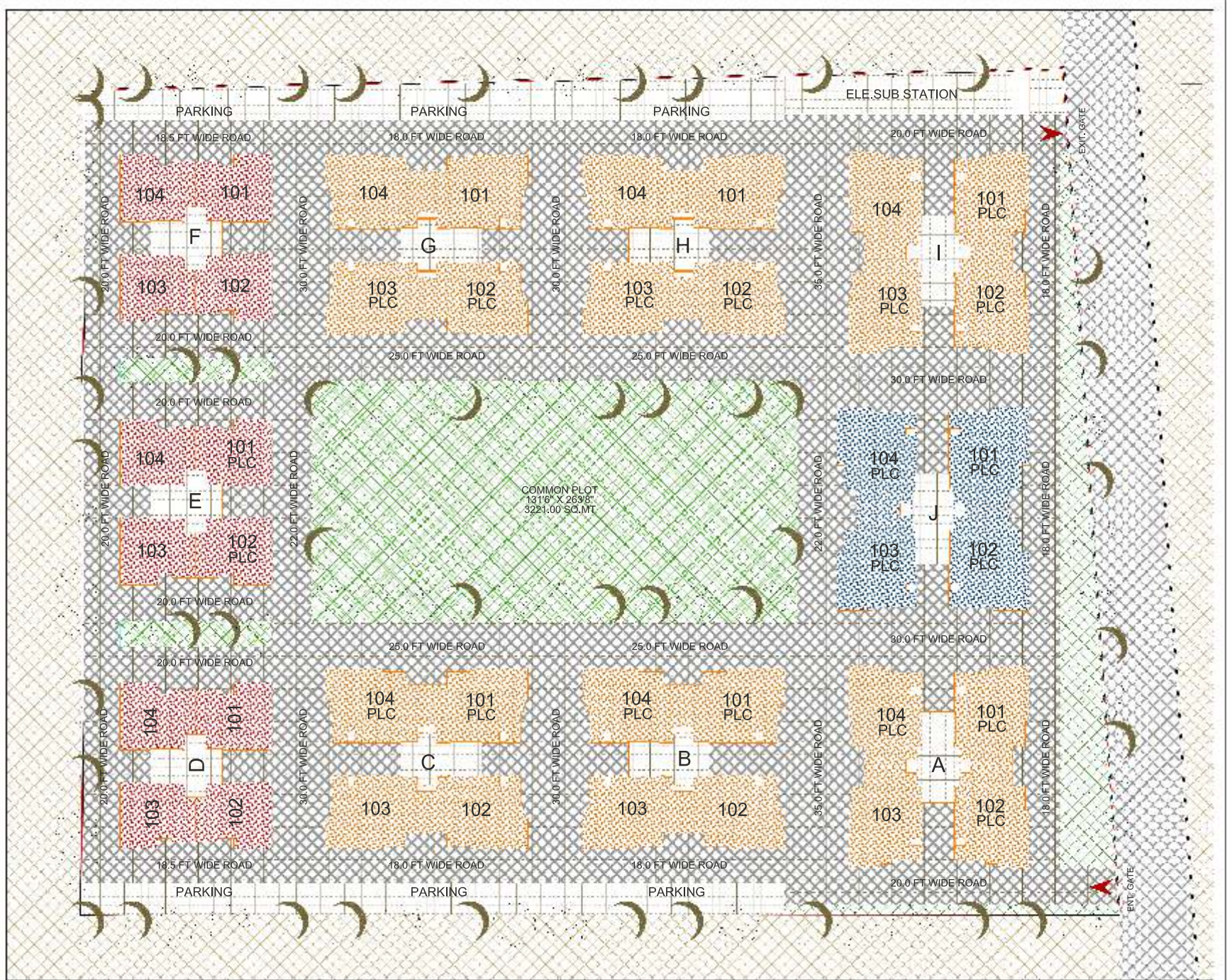
SHILP SHALIGRAM

3 & 4 BHK PREMIUM HOMES
@ VASTRAPUR

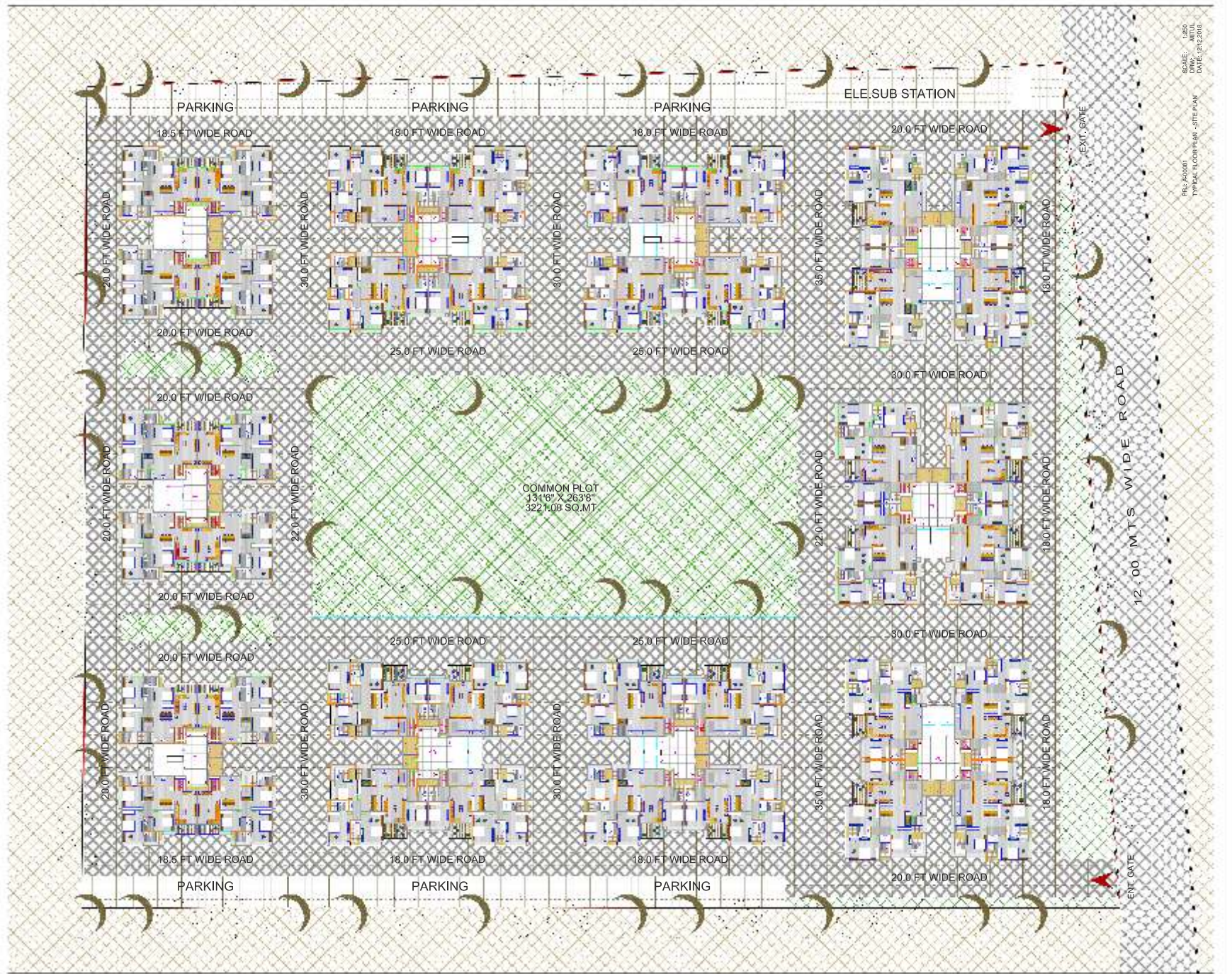


SHILP SHALIGRAM

SITE PLAN



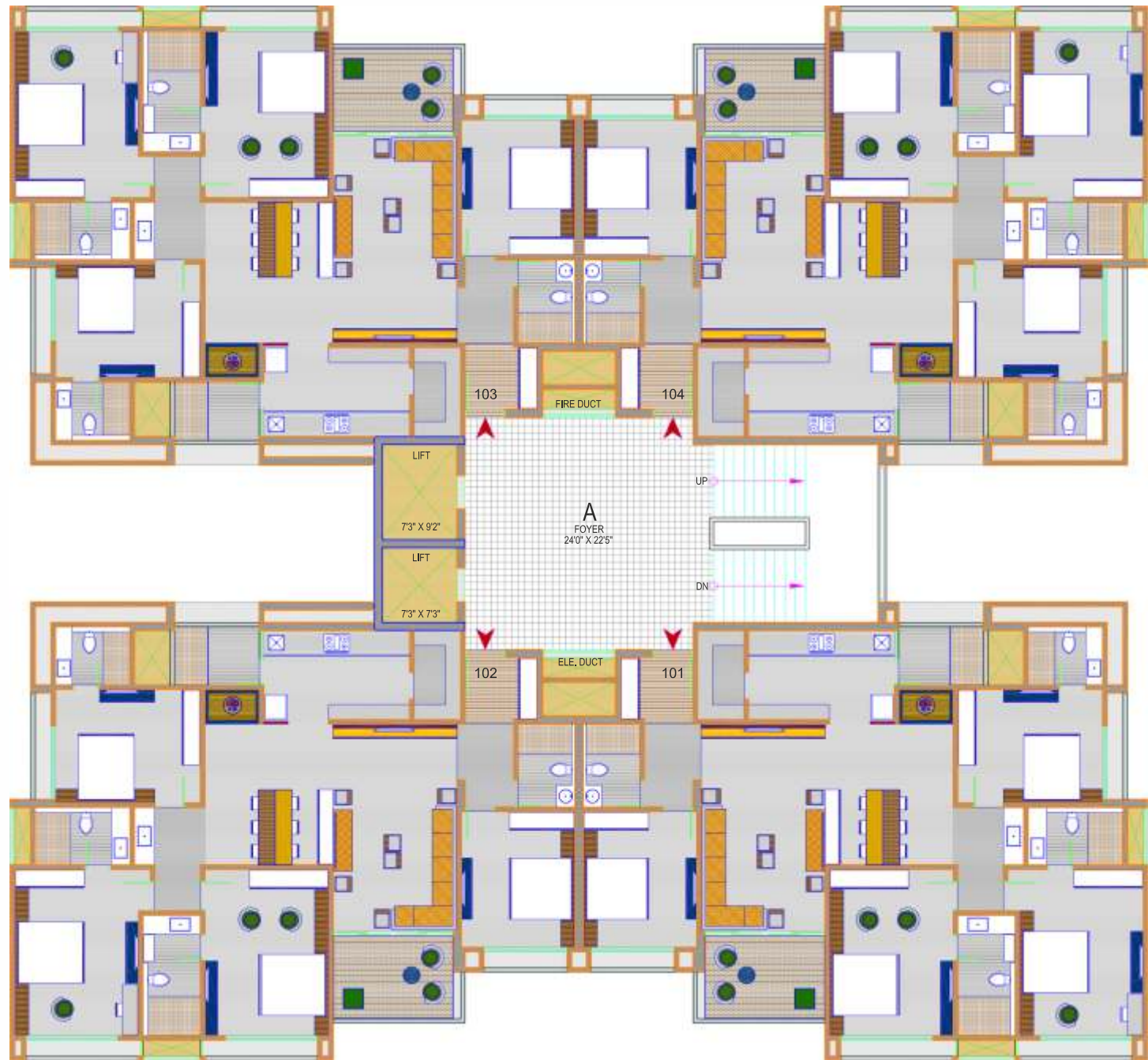
SITE PLAN



SCALE: 1:850
DATE: 21/12/2016
PRJ: A00001
TYPICAL FLOOR PLAN - SITE PLAN

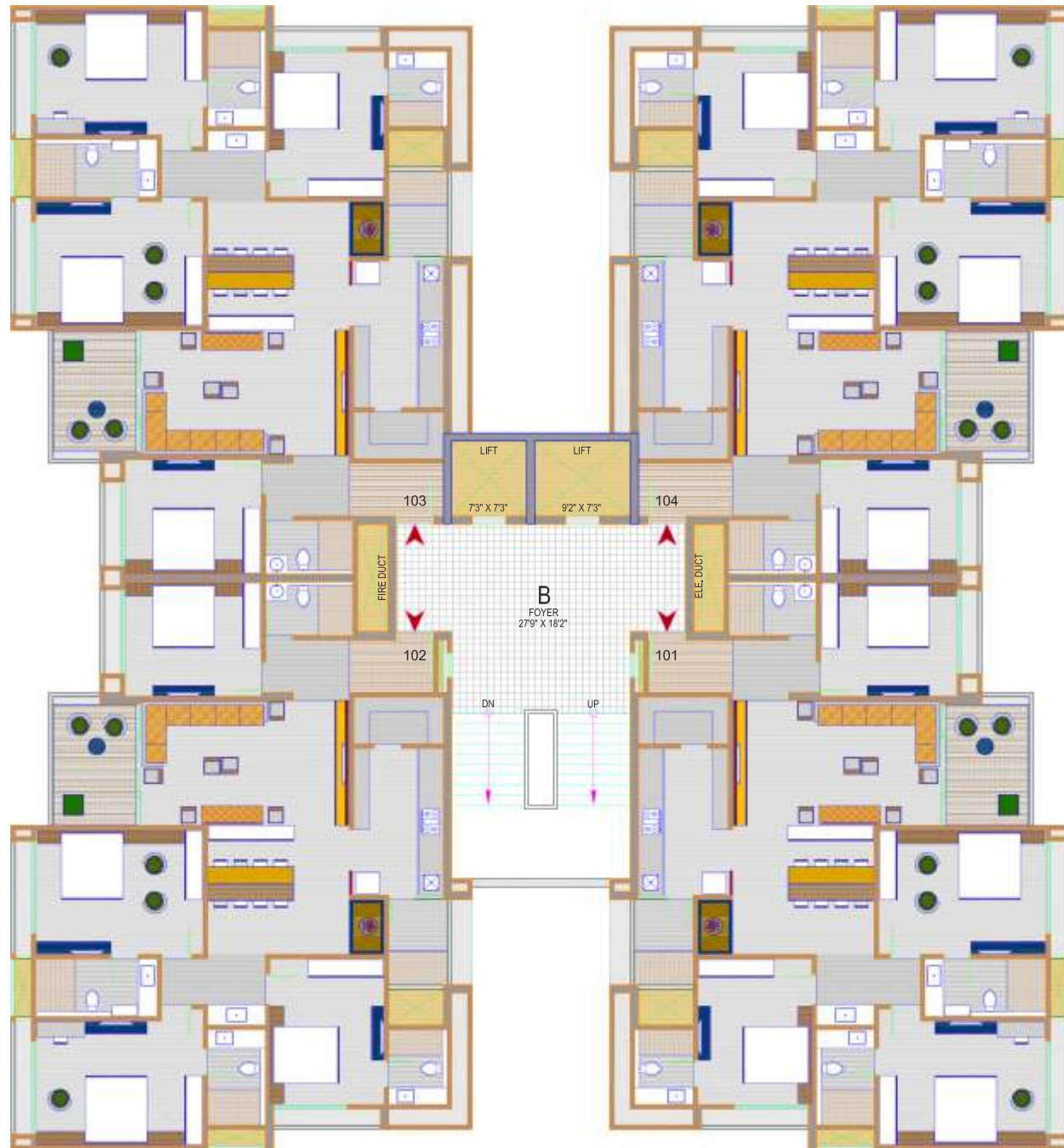
4 BHK FLOOR PLAN

BLOCK : A & I



4 BHK FLOOR PLAN

BLOCK : B, C, G & H



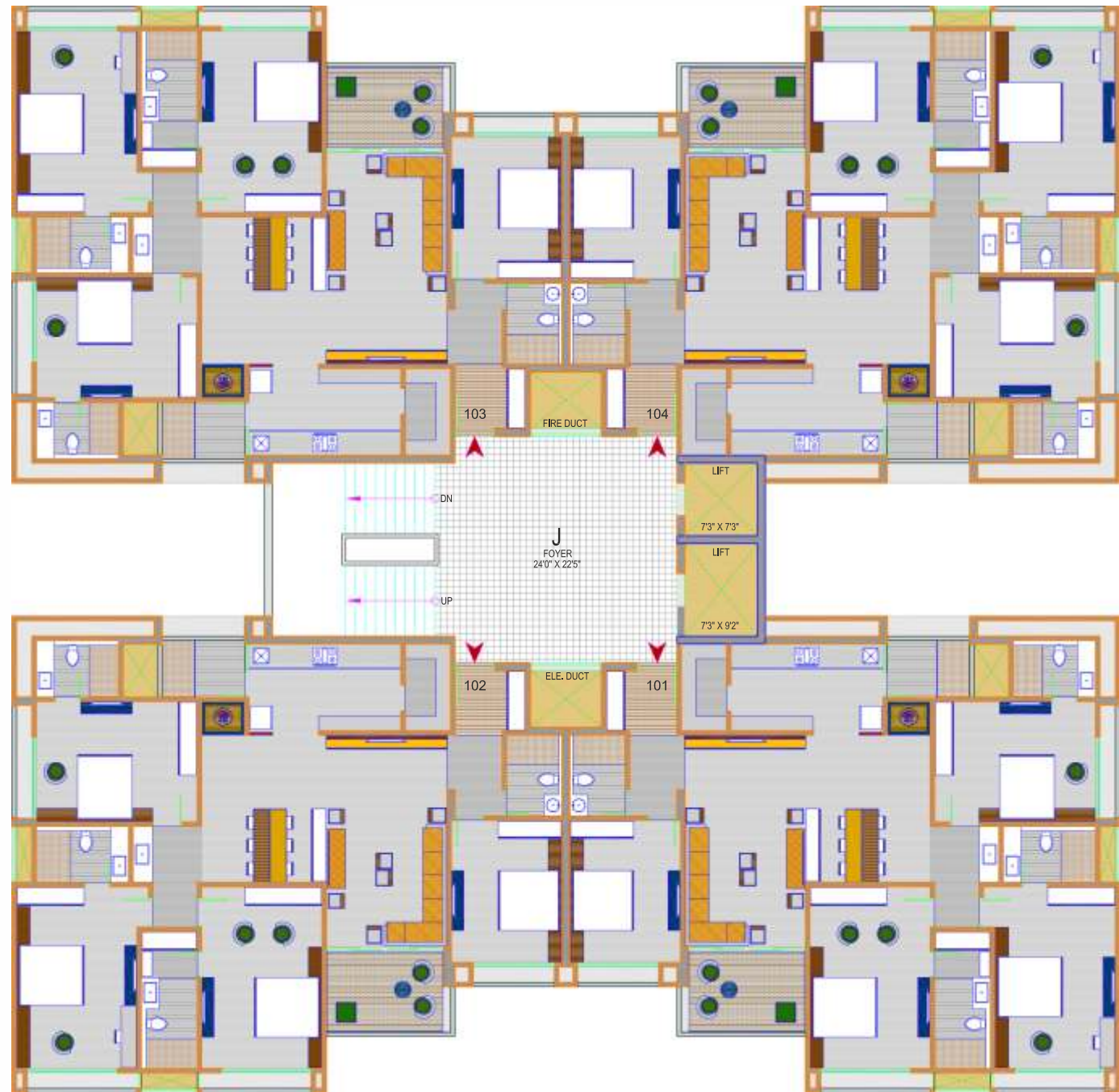
3 BHK FLOOR PLAN

BLOCK : D, E & F



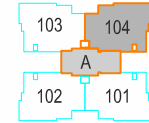
4 BHK FLOOR PLAN

BLOCK : J



4 BHK UNIT PLAN

BLOCK : A & I



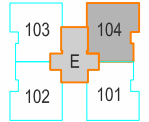
LEGEND - 104

NO.	SPACES	AREA
1	VESTIBULE	7'1" x 6'5"
2	G. BEDROOM-1	11'0" x 13'1"
2A	G. TOILET	5'6" x 8'0"
3	LIVING	12'0" x 20'0"
3A	VERANDAH	11'7" x 8'0"
4	DINING	12'4" x 13'7"
5	KITCHEN	14'1" x 9'0"
5A	STORE	4'6" x 8'8"
5B	KIT. YARD	8'2" x 5'8"
6	PUJA	5'3" x 3'4"
7	BEDROOM-2	14'0" x 11'0"
7A	TOILET	7'3" x 5'8"
8	M.BEDROOM-3	12'0" x 16'1"
8A	TOILET	9'2" x 5'7"
9	M.BEDROOM-4	12'0" x 16'1"
9A	DRESS / TOILET	5'7" x 11'8"



3 BHK UNIT PLAN

BLOCK : D, E & F



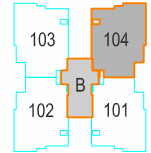
LEGEND - 104

NO.	SPACES	AREA
1	VESTIBULE	8'0" x 5'11"
2	LIVING	18'0" x 12'0"
2A	VERANDAH	5'0" x 11'7"
3	DINING	10'0" x 15'5"
4	KITCHEN	8'0" x 11'0"
4A	STORE	5'2" x 5'0"
4B	KIT. YARD	5'6" x 8'0"
5	PUJA	5'0" x 2'6"
6	G. TOILET	7'4" x 5'0"
7	BEDROOM-2	11'0" x 11'0"
8	M.BEDROOM-3	16'6" x 11'0"
8A	TOILET	5'6" x 5'8"
9	M.BEDROOM-4	12'10" x 11'1"
9A	TOILET	5'6" x 8'0"



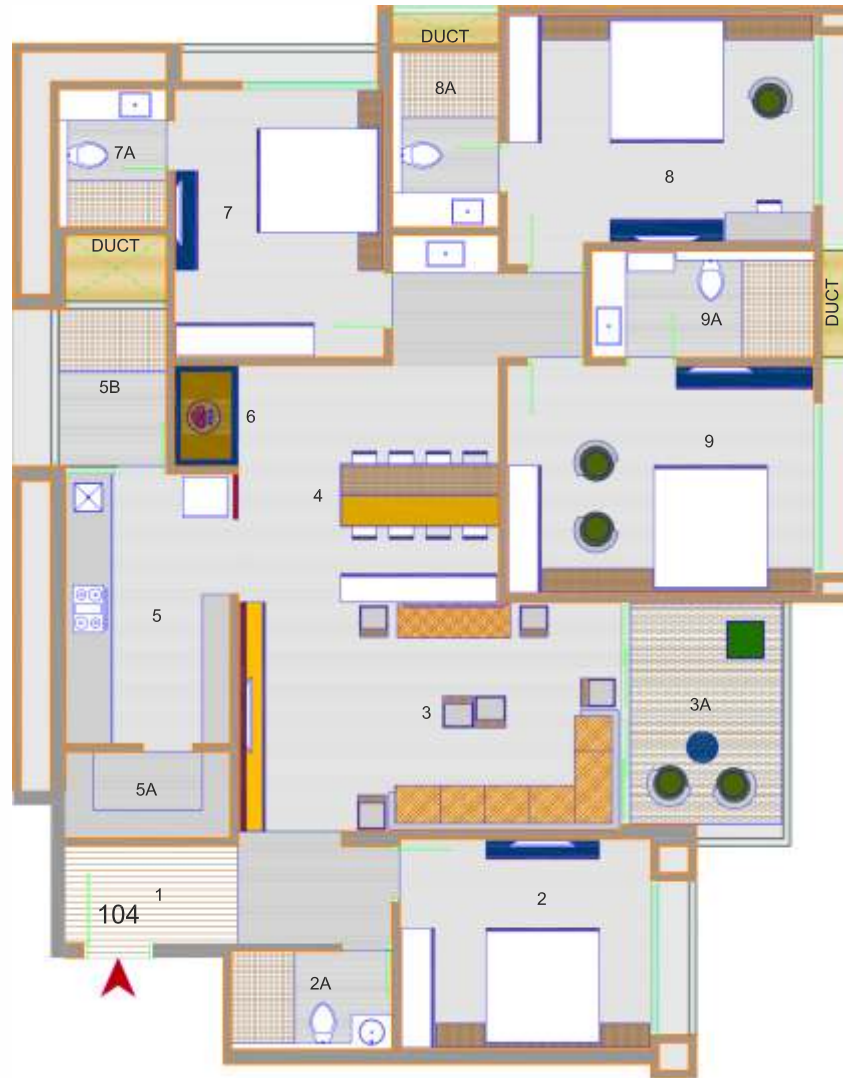
4 BHK UNIT PLAN

BLOCK : B, C, G & H



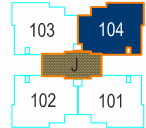
LEGEND - 104

NO.	SPACES	AREA
1	VESTIBULE	9'0" x 5'1"
2	G.BEDROOM-1	13'1" x 11'0"
2A	G.TOILET	8'5" x 5'2"
3	LIVING	20'0" x 12'0"
3A	VERANDAH	8'0" x 12'4"
4	DINING	13'7" x 12'4"
5	KITCHEN	9'0" x 14'1"
5A	STORE	8'8" x 4'6"
5B	KIT. YARD	5'8" x 8'2"
6	PUJA	3'4" x 5'3"
7	BEDROOM-2	11'0" x 14'0"
7A	TOILET	5'8" x 7'3"
8	M.BEDROOM-3	16'1" x 12'0"
8A	TOILET	5'7" x 9'2"
9	M.BEDROOM-4	16'1" x 12'0"
9A	TOILET	11'8" x 5'7"



4 BHK UNIT PLAN

BLOCK : J



LEGEND - 104

NO.	SPACES	AREA
1	VESTIBULE	7'1" x 6'0"
2	G.BEDROOM-1	11'0" x 14'1"
2A	G.TOILET	5'6" x 8'0"
3	LIVING	12'0" x 21'0"
3A	VERANDAH	11'7" x 8'0"
4	DINING	12'4" x 14'7"
5	KITCHEN	15'1" x 9'0"
5A	STORE	4'6" x 8'8"
5B	KIT. YARD	8'2" x 5'8"
6	PUJA	4'4" x 3'4"
7	BEDROOM-2	16'0" x 12'0"
7A	TOILET	8'2" x 5'8"
8	M.BEDROOM-3	12'0" x 18'1"
8A	TOILET	9'2" x 5'7"
9	M.BEDROOM-4	12'0" x 18'1"
9A	TOILET	5'7" x 13'7"



SPECIFICATIONS

FLOORING

- Vitrified tiles 800x800 in living, dining and kitchen.
- Vitrified tiles 600x600 in bedrooms.
- River washed granite flooring for verandah.

KITCHEN

- Platform -Mirror polished granite with S.S. sink as per design.
- Tile dado up to lintel level.

TOILETS

- Tile dado up to lintel level.
- Plumbing fittings - Jaquar / Kolhar / Hansgrohe / Equivalent.
- Sanitary were - Kolhar / Duravit / Qura Equivalent.

DOORS & WINDOWS

- Main entrance door - thick flush door with both side veneer.
- Other bedroom doord - thick flush door.
- Door frame - Wooden.
- Window jamb - polished granite.
- Windows -Powder coting aluminum sections with plain glass.

ELECTRICAL

- 3-phase concealed ISI copper wiring with Modular Switches, MCB distribution Panel.
- Provision of TV / cable / telephone points.

A.C.

- Provision of split a.c.

EXTERNAL & INTERNAL FINISHES

- External-Double coat mala plaster with texture paint. (100% Acrylic paint)
- Internal-Single coat mala plaster with putty finish.

AMENITIES

- Exquisite Landscaped Garden.
- Fully Equipped Gymnasium.
- Home Theatre.
- Indoor Games.
- Multipurpose Court.
- Multipurpose Hall Connected with garden
- lawn for party / small functions.
- Children's play Areas.
- Swimming pool - Changing Room & Shower

SALIENT FEATURES

- Secured and gated community.
- 2 Automatic elevators for each block.
- Drop-off zone.
- Hi-Tech security system with intercom facility and video door phone.
- Gas Piped supply in each apartment through gas Adani PNG supply.
- Provision for DTH satellite TV connection.
- Generator for power back-up for common services.
- Car parking Space in basement and hollow plinth (allotted).
- All internal roads of R.C.C / Pattern design Stone Paving.

KEY PLAN





204, Shilp-3, Opposite HOF Showroom,
Mann Party Plot Cross Road, Sindhubhavan Road,
S.G.Highway, Bodakdev, Ahmedabad - 380052, Gujarat, India.