

platinum
CASA *Divine*
ANDHERI (W)



LIVING IN BLISS



Artist's Impression

7 platinum corp.





PROJECT HIGHLIGHTS:



LAUNDERETTE



FITNESS CENTRE



WI-FI ZONE



SECURITY
SURVEILLANCE



HOUSE-HOLD
REPAIRS



24X7 MEDICAL
ASSISTANCE



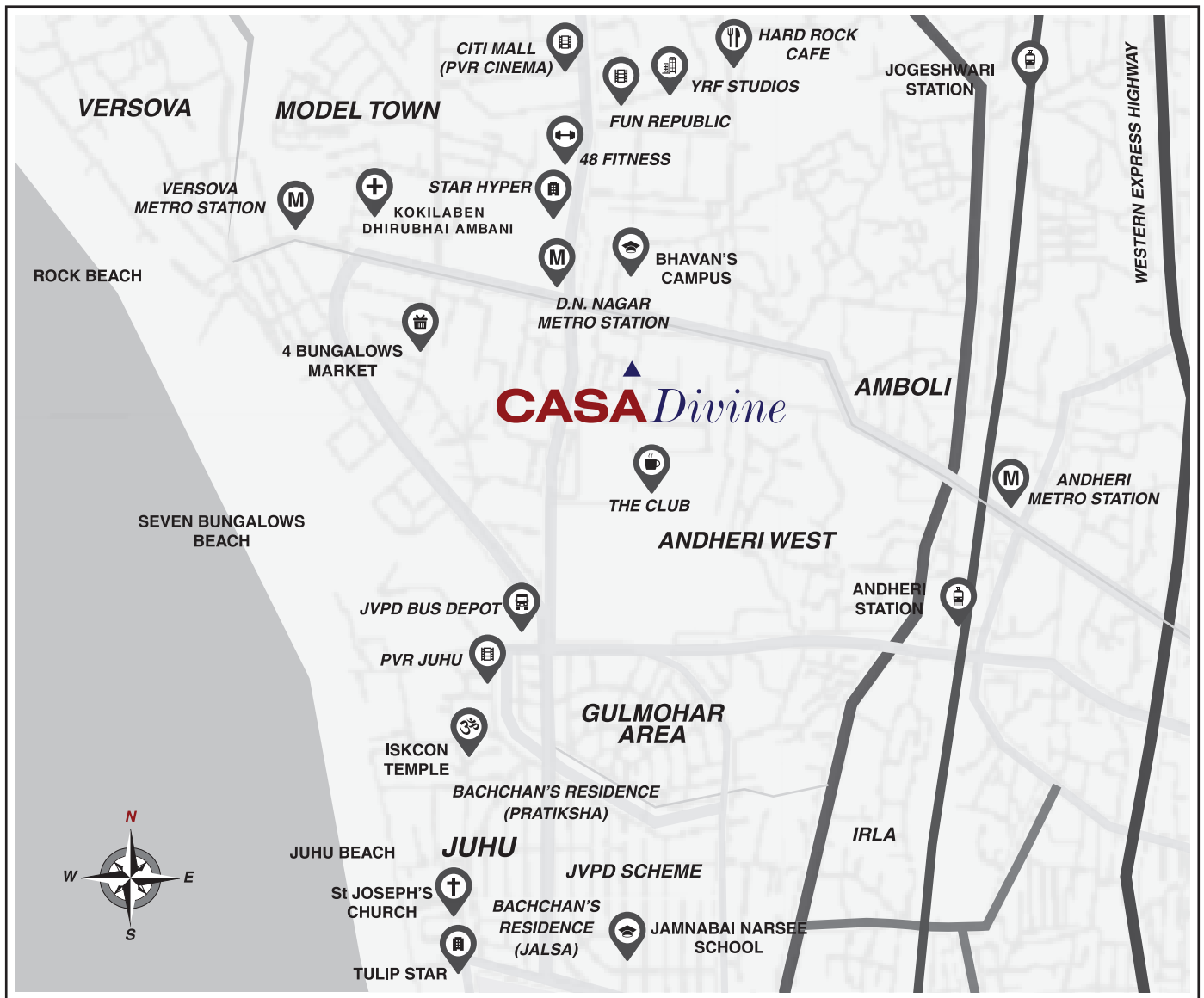
GROUND
ASSISTANCE



AUTOMATED
CAR PARKING



CLUB PLATINUM



CONNECTIVITY

- DN Nagar & Azad Nagar Metros - 2 Mins Walk • Off New Link Road
- Andheri & Vile Parle Stations - 10 Mins • International & Domestic Airports - 15 Mins

LOCATION ADVANTAGES

- The Club & Andheri Sports Club - 5 Mins • Kokilaben Hospital - 5 Mins • Prithvi Theatre - 10 Mins • Infinity Mall - 10 Mins • YRF Studio - 10 Mins • Surrounded by Lounges, Pubs, etc.

A QUALITY LIFESTYLE



COMMON AMENITIES AND FACILITIES FOR THE ENTIRE PROPOSED BUILDING

- RCC framed structure with well-designed Elevation
- Underground Basements with Automated Car Parking system
- RCC Raft Footing
- Well-designed Compound Wall and Entrance Gate
- Well decorated Entrance Lobby
- Provision of Wi-Fi connectivity in Entrance Lobby
- Decorative paving at Ground Level and Stilt Area
- Mechanical Stack Parking system at Stilt Level
- Passenger Lifts of reputed make
- Well-equipped Gymnasium
- CCTV and Intercom system
- Planters and open-to-air seating at Terrace Level

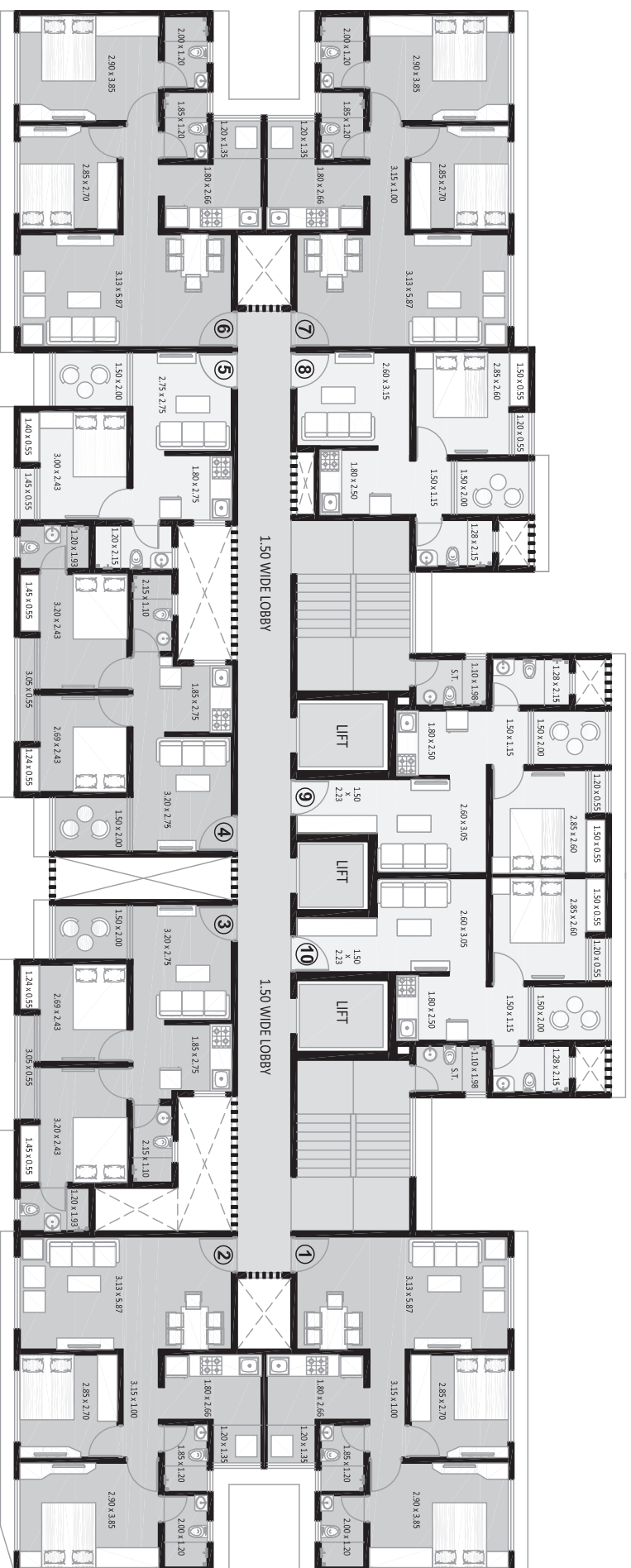
FIXTURES, FITTINGS, AND AMENITIES TO BE PROVIDED INSIDE THE FLATS

- Main entrance flush door with Godrej safety lock and quality branded hardware
- Marble/Granite jambs for bathroom doors and all windows
- Anodized/Powder coated aluminum sliding/louvered windows
- Built-in TV Unit in Living room - as per Developer's design
- Partial False ceiling with LED lights in Living Room and Bedroom(s) - as per Developer 's design
- Concealed electrical points with MCB/ELCB for extra safety
- High-tech switches with touch/remote (Home Automation range)
- Provision of Telephone and Cable TV points
- POP/Gypsum finished Internal walls with quality paint
- Vitrified/PGVT flooring in all rooms
- Glazed tiles dado in bathroom(s) and kitchen
- Granite cooking/preparation platform in kitchen
- Modular storage cabinets under platform counter and overhead storage shelves in kitchen - as per Developer's design
- Stainless steel sink and 4 burner cooking hob/stove of reputed make in kitchen
- Concealed UPVC/ CPVC/ GI Plumbing
- Provision of water purifier connection in kitchen
- Provision of geyser and exhaust fan connection in bathroom(s)
- European WC, designer glass/ceramic washbasin(s) and C.P. fittings of reputed make in bathroom(s)



ALL IMAGES SHOT ON LOCATION

TYPICAL FLOOR PLAN



- | | | | |
|---|--------------|---|----------------|
| ① | 2 BHK GRANDE | ⑥ | 2 BHK GRANDE |
| ② | 2 BHK GRANDE | ⑦ | 2 BHK GRANDE |
| ③ | 2 BHK DELUXE | ⑧ | 1 BHK GRANDE |
| ④ | 2 BHK DELUXE | ⑨ | 1 BHK GRANDE + |
| ⑤ | 1 BHK DELUXE | ⑩ | 1 BHK GRANDE + |

R O A D

R O A D

platinum
CASA *Divine*
ANDHERI (W)

A Project by:



Product Experts: Aashi - 808080 4128 | Hiral - 808080 4136 | Dimple - 808080 4132

Dhanbir: 808080 4126 | Sameer: 808080 4125 | Dhananjay: 808080 4192

Site Office: Platinum CASA Divine, Off J.P. Road, D.N. Nagar, Andheri (W), Mumbai - 400 053



Project is Registered with MahaRERA as Platinum Tower 7.

MahaRERA Reg. No.: P5180000654 | Available at <https://maharera.mahaonline.gov.in>

This project is financed by ECL Finance Ltd. Edelweiss
Edelweiss is a brand of ECL Finance Ltd.

All plans, features, images, facilities, dimensions and details are tentative and subject to approvals from authorities concerned. Commuting time, specifications, furniture, fixtures and visuals are indicative only. You are required to verify all the details, including approvals, areas, amenities, services, terms of sales, payments and other relevant terms independently with Developer's sales team / office, also by physically visiting the project site and from the authorized website of MahaRERA. The project is mortgaged to Catalyst Trusteeship Limited and ECL Finance Limited. We shall obtain and provide No Objection Certificate (NOC) / permissions from both for sale of the units in the project, if required.