



GODREJ AIR NXT

WHITEFIELD, BANGALORE






IT IS LIKE A BREATH OF FRESH AIR IN THE FAST-MOVING SUBURB OF WHITEFIELD



Presenting oxy-plus homes, where you can discover freshness of food, water and air. Live a healthy lifestyle through a host of amenities and enjoy the advantage of easy connectivity.



WELCOME TO
HOMES THAT BREATHE
FRESH AIR



Artist's impression. Not an actual site photograph.

The project is registered as Godrej Air Nxt with RERA No. PRM/KA/RERA/1251/446/PR/190330/002517, available at: <http://rera.karnataka.gov.in>



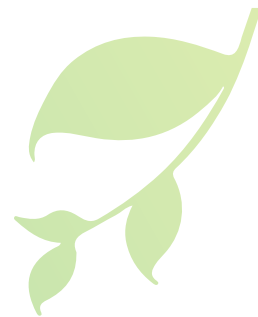
HOMES THAT BREATHE IN ENHANCED FRESHNESS WITH THE CUTTING-EDGE CTFA TECHNOLOGY



The project is registered as Godrej Air Nxt with RERA No.
PRM/KA/RERA/1251/446/PR/190330/002517, available at: <http://rera.karnataka.gov.in>



Stock image for representative purpose only



ENHANCED AIR QUALITY WITH CTFA TECHNOLOGY

Step in your house and experience freshness at every corner. The cutting-edge Centrally Treated Fresh Air technology (CTFA) purifies the air with complete ease and lets you breathe in the freshness that's pollutant free. We have literally designed your home to create an environment where the air you will breathe, will be of enhanced quality.



The project is registered as Godrej Air Nxt with RERA No. PRM/KA/RERA/1251/446/PR/190330/002517, available at: <http://rera.karnataka.gov.in>



Stock image for representative purpose only



AT THE HEART OF WHITEFIELD

Come to a location that brings the city closer to home through the last mile connectivity via the proposed Metro rail*, which will be just a stone's throw from Godrej Air Nxt. Being centrally located at Whitefield, the community is in close proximity of social infrastructure like leading international schools, IT parks, shopping malls, multiplexes, prominent eateries, and healthcare facilities.



*Source: BMRCL

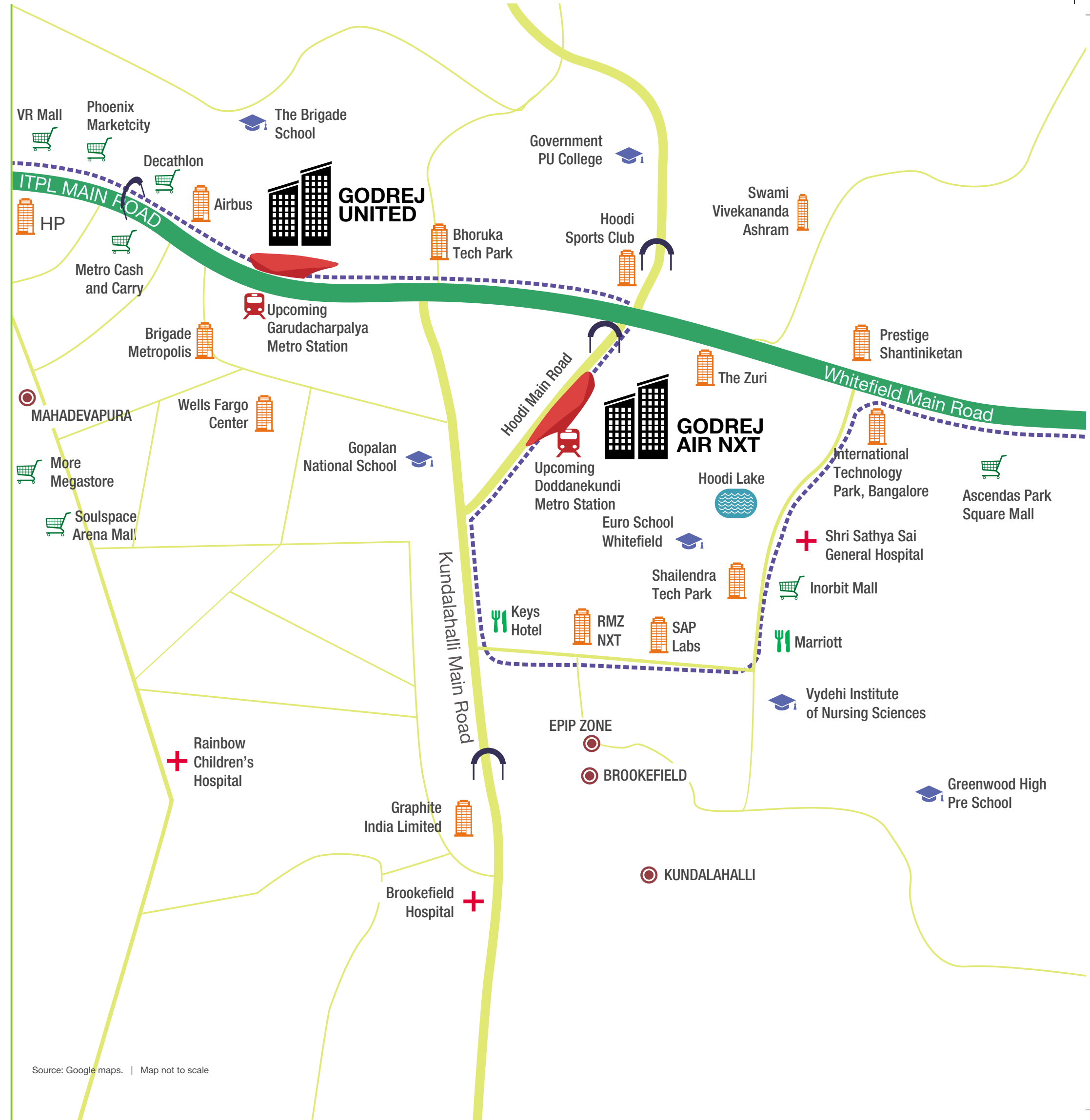
The project is registered as Godrej Air Nxt with RERA No. PRM/KA/RERA/1251/446/PR/190330/002517, available at: <http://rera.karnataka.gov.in>



Stock image for representative purpose only



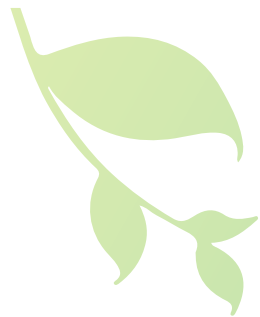
- Landmarks
- School/College
- Retail
- Tech Park/Commercial Residential
- Railway
- Hospital
- Hotel
- Roadway
- Metro
- Lake
- Proposed Metro Line*



*Source: BMRCL

The project is registered as Godrej Air Next with RERA No. PRM/KA/RERA/1251/446/PR/190330/002517, available at: <http://rera.karnataka.gov.in>

Source: Google maps. | Map not to scale



IN CLOSE PROXIMITY TO THE PROPOSED METRO*

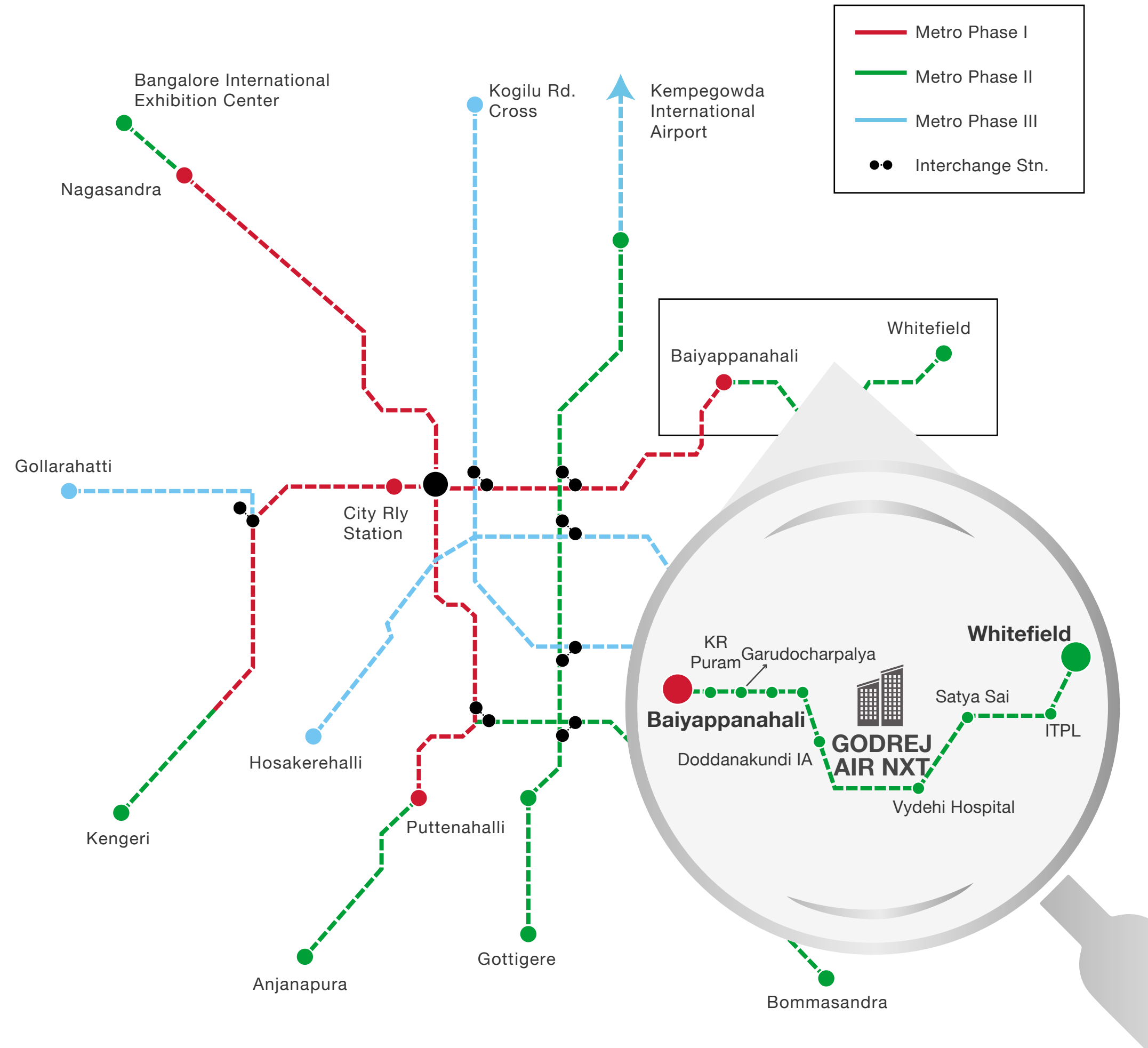


*Source: BMRCL

The project is registered as Godrej Air Nxt with RERA No. PRM/KA/RERA/1251/446/PR/190330/002517, available at: <http://rera.karnataka.gov.in>



METRO
JUST A FEW
MINUTES AWAY*



CONNECTIVITY & ACCESSIBILITY

SCHOOLS

Gopalan School	0.75 km	*5 mins
Brigade School	2.80 km	*10 mins
Euro School	0.90 km	*05 mins
Greenwood High Pre-school	6.60 km	*20 mins
The Deens Academy	6.80 km	*20 mins

HOSPITALS

Vydehi Hospital	3.60 km	*10 mins
Columbia Asia Hospital	8.30 km	*25 mins
Sri Satya Sai General Hospital	5.50 km	*20 mins

CORPORATES

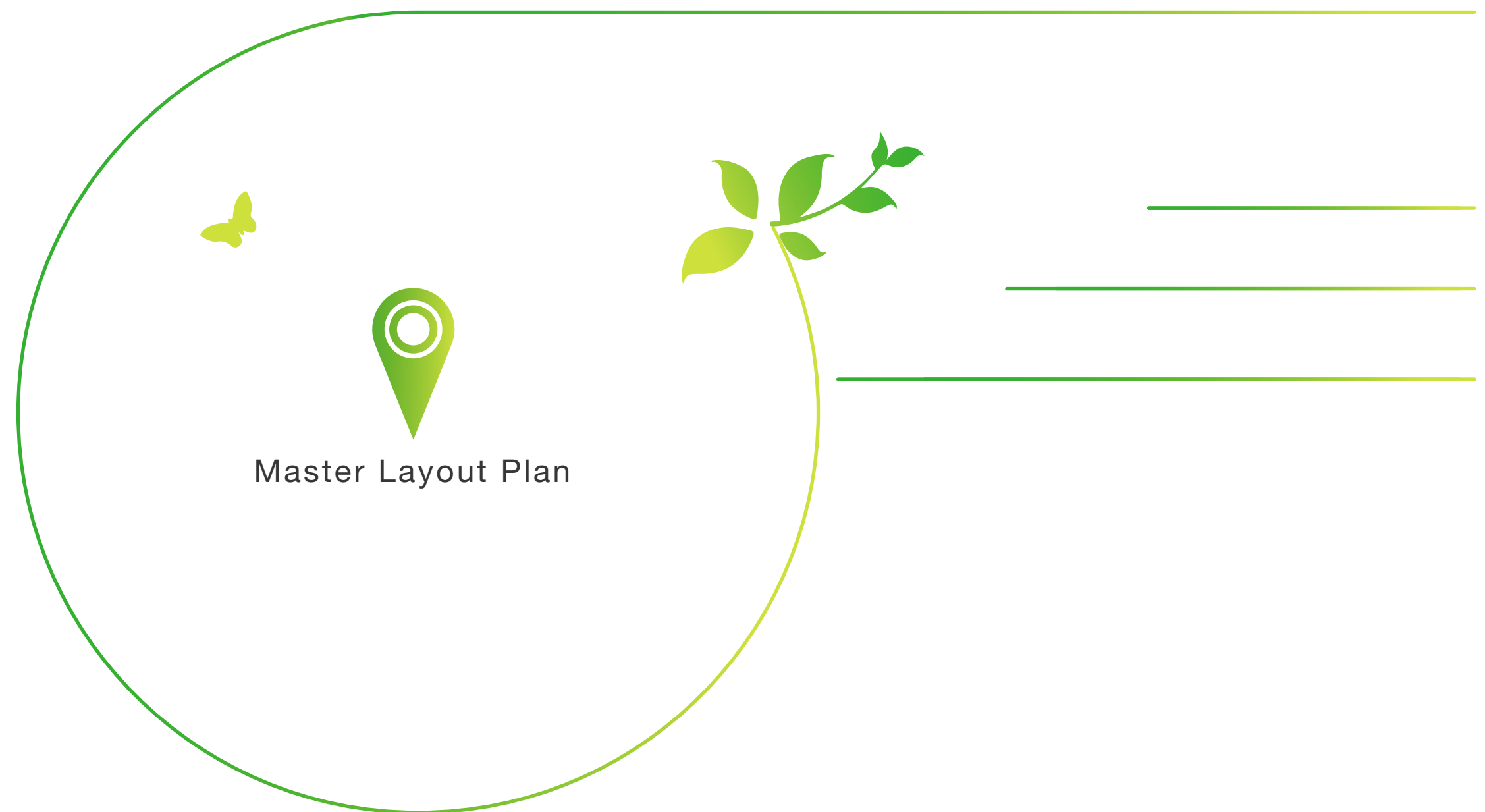
RMZ NXT	1.90 km	*10 mins
Shailendra Tech Park	3.20 km	*15 mins
ITPB Tech Park	4.80 km	*12 mins
SAP Labs	2.30 km	*10 mins
Airbus	2.10 km	*10 mins
Cap Gemini	2.20 km	*10 mins
HP	3.70 km	*15 mins

RETAILS

Phoenix Mall	3.00 km	*11 mins
VR Mall	2.90 km	*10 mins
Forum Value Mall	7.70 km	*21 mins

Source: Google Maps

Disclaimer: Drive time under usual traffic conditions*





MASTER LAYOUT PLAN



- | | | |
|----------------------------|------------------------|---------------------------|
| 1. BUILDING ENTRY | 11. AMPHITHEATRE | 21. PARTY PLAZA |
| 2. EXTERNAL GREENS | 12. SEATING COURT | 22. BARBEQUE PIT |
| 3. CIVIC AMENITIES AREA | 13. SENIORS' COURT | 23. SERVICES |
| 4. RAMP FROM THE BASEMENT | 14. LOBBY ENTRANCE | 24. CHILDRENS' PLAY AREA |
| 5. RAMP TO THE BASEMENT | 15. STAR-GAZING DECK | 25. OUTDOOR GYM |
| 6. ORGANIC FARM | 16. ZEN GARDEN | 26. JOGGING/BICYCLE TRACK |
| 7. SWIMMING POOL | 17. MEDITATION PODS | 27. TREE PLAZA |
| 8. PADDLE POOL | 18. YOGA DECK | 28. TOWER AIR NXT |
| 9. WALKING & JOGGING TRACK | 19. TERRACE SEATING | P. VISITORS PARKING |
| 10. PLAY COURT | 20. URBAN FARMING PODS | |



Not to scale.

The project is registered as Godrej Air Nxt with RERA No. PRM/KA/RERA/1251/446/PR/190330/002517, available at: <http://rera.karnataka.gov.in>

MASTER PLAN HIGHLIGHTS

- GODREJ AIR NXT IS SPREAD ACROSS 1.29 ACRES OF AN OVERALL DEVELOPMENT OF 6.6 ACRES
- 1 ICONIC TOWER WITH 1 BASEMENT + 1 STILT + 17 FLOORS
- PROJECT DESIGNED BY INFORM ARCHITECTS
- LANDSCAPE DESIGNED BY MASTER PLAN





BREATHE IN THE
PURITY OF
FRESH AIR IN
YOUR HOME WITH
THE CENTRALLY
TREATED FRESH
AIR TECHNOLOGY
(CTFA)
AT GODREJ AIR NXT



The project is registered as Godrej Air NXT with RERA No.
PRM/KA/RERA/1251/446/PR/190330/002517, available at: <http://rera.karnataka.gov.in>

*The furniture and fixtures designs, decorative items, specifications and other details shown in the image are for illustrative purposes only and are indicative in nature.
Stock image for representative purpose only



A REVOLUTIONARY AIR PURIFICATION SYSTEM IS HERE - **CTFA**

Presenting a cutting-edge air purifying system – Centrally Treated Fresh Air or (CTFA) at Godrej Air Nxt. A simple and highly effective technology, it purifies the air with complete ease and gives you a home that is fresh, clean and pollutant free.

In simple terms, CTFA is a centralized air purification system which runs through the home and is well hidden from view. It helps remove stale air, controls carbon dioxide and eliminates harmful germs.

This makes the room's natural freshness last longer which in turn helps keep you and your loved ones lead a healthier life.



The project is registered as Godrej Air Nxt with RERA No. PRM/KA/RERA/1251/446/PR/190330/002517, available at: <http://rera.karnataka.gov.in>



Stock image for representative purpose only



SWIMMING POOL

The pool will be kept clean through an alternative process of reducing irritation in swimmer's eyes and maintaining the health of skin and hair.



The project is registered as Godrej Air Nxt with RERA No. PRM/KA/RERA/1251/446/PR/190330/002517, available at: <http://rera.karnataka.gov.in>



Artist's impression. Not an actual site photograph.



CENTRAL WATER SOFTENING PLANT

A system to provide you with soft water that is milder on the skin and hair, and that preserves the life of all water appliances such as water heaters and laundry equipment, as well as saves you money on monthly energy costs and prevents damage to appliances.



The project is registered as Godrej Air Nxt with RERA No. PRM/KA/RERA/1251/446/PR/190330/002517, available at: <http://rera.karnataka.gov.in>



Stock image for representative purpose only



WATER EFFICIENT FIXTURES

Low flow water fixtures feature in Restrooms and Kitchen, which help in conservation of water.





RAINWATER HARVESTING

A system that is designed to capture run-off water from the roof. The water will be used for domestic purpose post the water treatment process.



ACTIVE LIVING

Engage in a variety of fitness and leisure activities. Our tie-ups with diverse fitness brands ensure that there is something here for every kind of person, from bibliophiles to fitness enthusiasts.



Stock image for representative purpose only

The project is registered as Godrej Air Nxt with RERA No. PRM/KA/RERA/1251/446/PR/190330/002517, available at: <http://rera.karnataka.gov.in>



BASKETBALL COURT



KIDS' PLAY AREA

The project is registered as Godrej Air Nxt with RERA No. PRM/KA/RERA/1251/446/PR/190330/002517, available at: <http://rera.karnataka.gov.in>

Artist's impression. Not an actual site photograph
Specifications shown are indicative in nature



INDOOR BADMINTON COURT



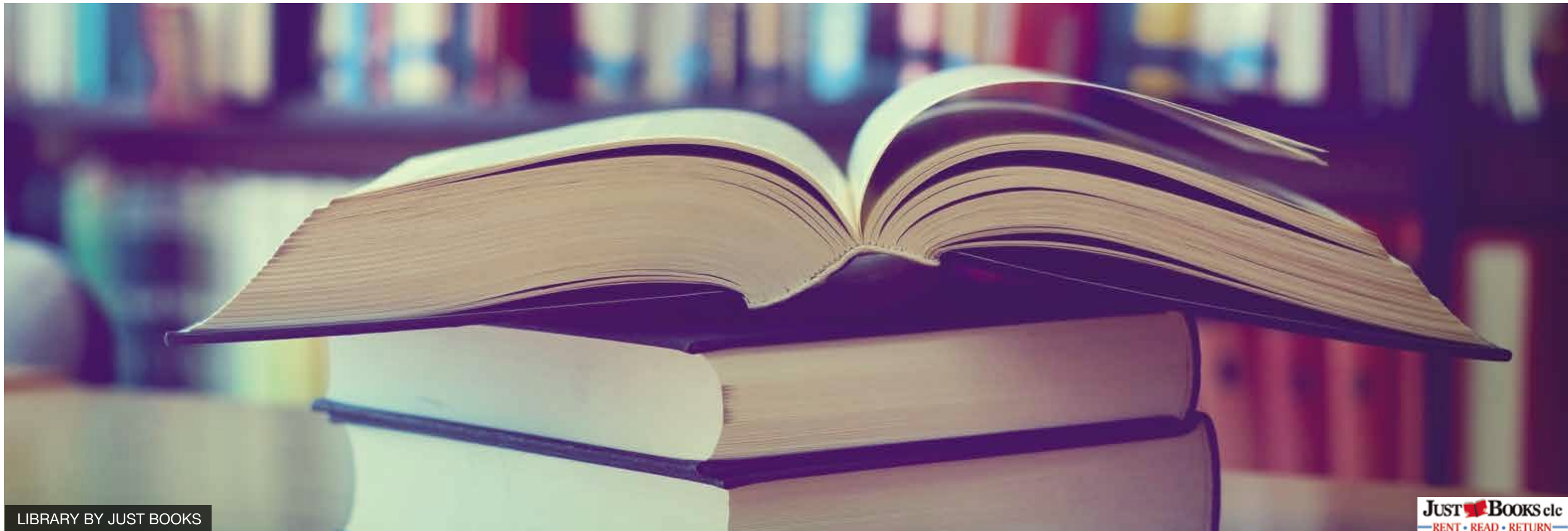
BILLIARDS



TABLE TENNIS



BUSINESS CENTER



LIBRARY BY JUST BOOKS

JUST BOOKS clc
RENT • READ • RETURN



SPA

Ayush Ayurcare



BOARD GAMES



MULTIPURPOSE HALL



DANCE SESSIONS

EAT HEALTHIER

Be at the best of your physical, mental and emotional health by adding more nutrients to your diet. Get fresh and organic food delivered to your doorstep.


Stock image for representative purpose only

The project is registered as Godrej Air Nxt with RERA No. PRM/KA/RERA/1251/446/PR/190330/002517, available at: <http://rera.karnataka.gov.in>



ORGANIC FARM

Spaces on the Ground Level for growing vegetables, the natural and healthy way.



The project is registered as Godrej Air Nxt with RERA No. PRM/KA/RERA/1251/446/PR/190330/002517, available at: <http://rera.karnataka.gov.in>



Stock image for representative purpose only



HEALTH CAFÉ

A café known for serving healthy food and beverages that are full of antioxidants and that help regulate body weight as well as keep skin and hair healthy and glowing.



The project is registered as Godrej Air Nxt with RERA No. PRM/KA/RERA/1251/446/PR/190330/002517, available at: <http://rera.karnataka.gov.in>



Artist's impression. Not an actual site photograph.
Specifications shown are for illustrative purposes only.



NAMDHARI'S

Get fresh vegetables straight from organic farms, delivered to your doorstep.



RETAIL & CONVENIENCES

A world of offerings come to your doorstep, through our tie-ups with a host of renowned retail brands and service providers.

Stock image for representative purpose only

The project is registered as Godrej Air Nxt with RERA No. PRM/KA/RERA/1251/446/PR/190330/002517, available at: <http://rera.karnataka.gov.in>



STAINWASH LAUNDRY



HEALTH CAFÉ





ATM



CONVENIENCE STORE



HEALTH CARE

LEISURE & ENTERTAINMENT

Slow down, unwind with friends over games and conversations, spend time with yourself engaged in a hobby, or celebrate your special moments at Godrej Air NXT. Leisure and entertainment spaces here are thoughtfully designed to cater to everyone and every occasion.



Stock image for representative purpose only

The project is registered as Godrej Air Nxt with RERA No. PRM/KA/RERA/1251/446/PR/190330/002517, available at: <http://rera.karnataka.gov.in>



AMPHITHEATRE

The project is registered as Godrej Air Nxt with RERA No. PRM/KA/RERA/1251/446/PR/190330/002517, available at: <http://rera.karnataka.gov.in>

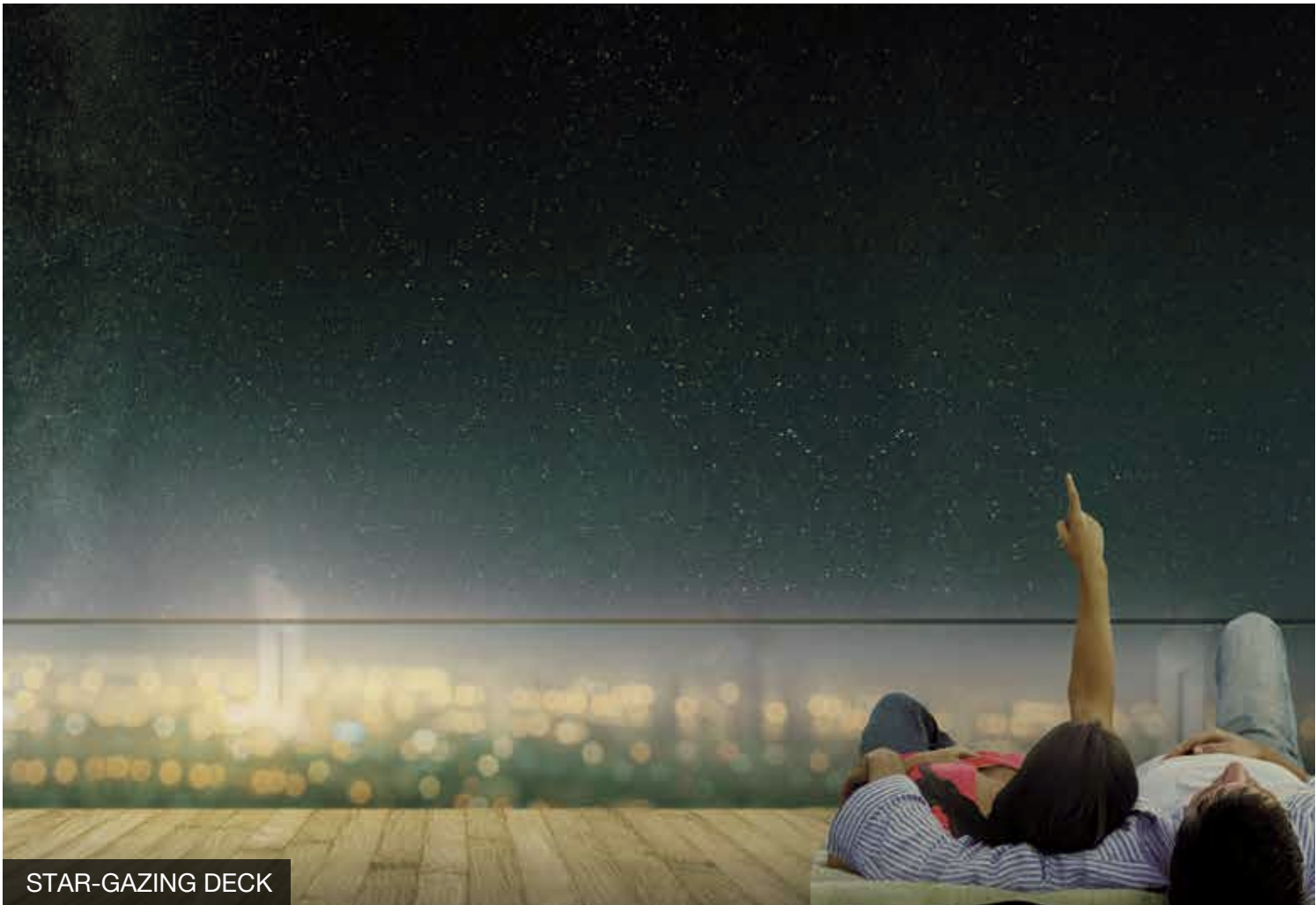
Artist's impression. Not an actual site photograph.
Specifications shown are for illustrative purposes only.



The project is registered as Godrej Air Nxt with RERA No. PRM/KA/RERA/1251/446/PR/190330/002517, available at: <http://rera.karnataka.gov.in>



Stock images for representative purpose only





AMENITIES AT GODREJ AIR NXT



Stock images for representative purpose only

The project is registered as Godrej Air Nxt with RERA No.
PRM/KA/RERA/1251/446/PR/190330/002517, available at: <http://rera.karnataka.gov.in>



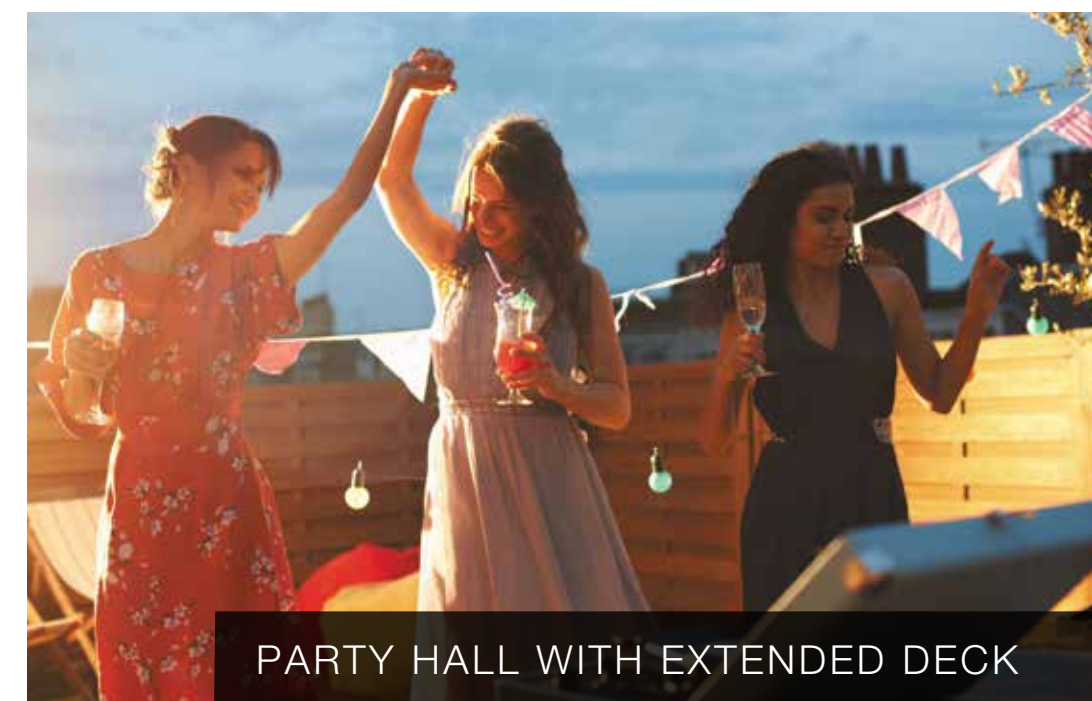
STAND-ALONE JACUZZI



STEAM ROOM & SAUNA



YOGA DECK



PARTY HALL WITH EXTENDED DECK



CHESS



EXCLUSIVE AMENITIES AT GODREJ AIR NXT



Stock images for representative purpose only

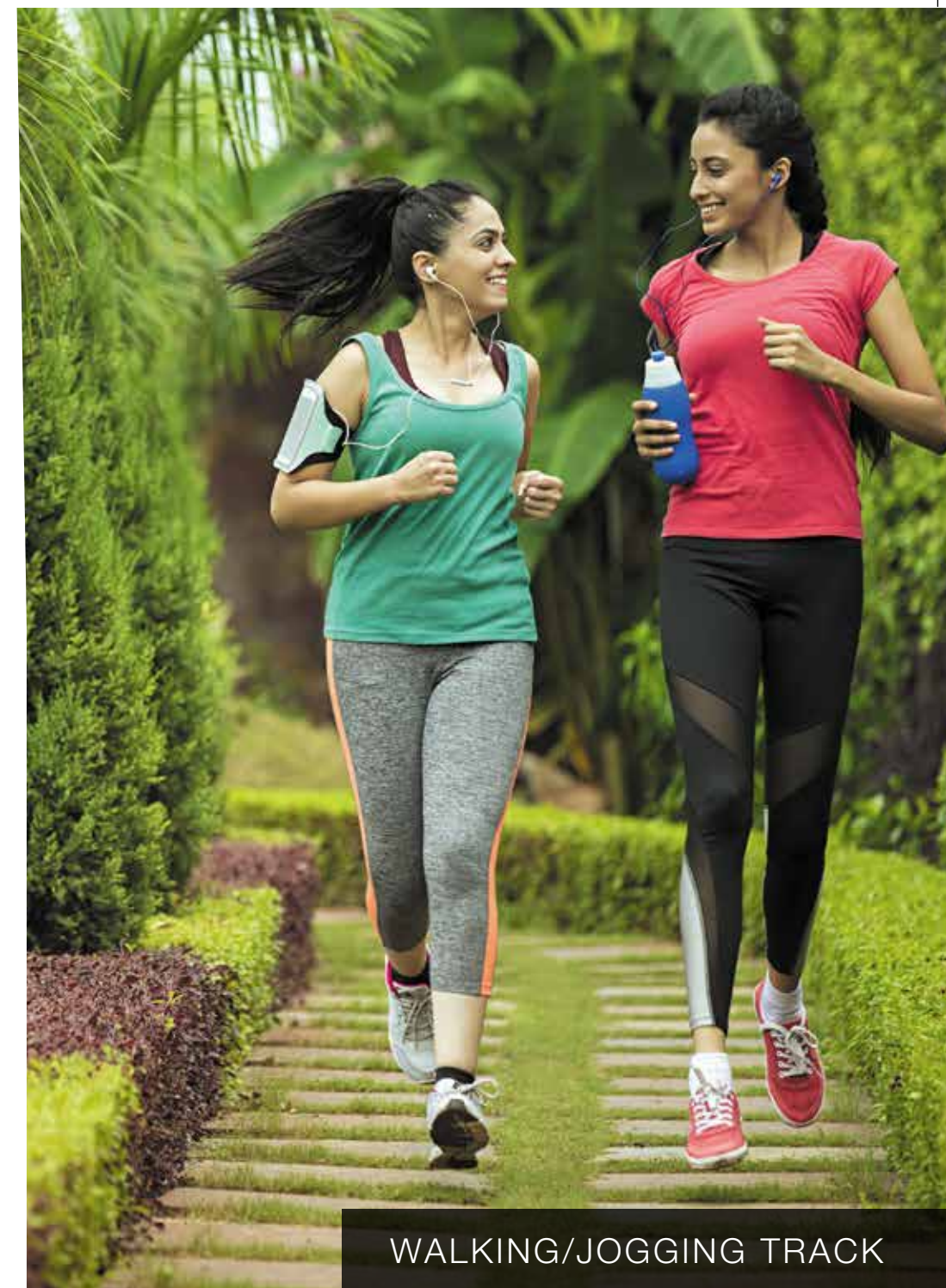
The project is registered as Godrej Air Nxt with RERA No.
PRM/KA/RERA/1251/446/PR/190330/002517, available at: <http://rera.karnataka.gov.in>



INDOOR GYM



OUTDOOR GYM



WALKING/JOGGING TRACK



SEATING AREA

SPECIFICATION

STRUCTURE

Type of structure Aluminium Formwork RCC structure

FLOORING

Living/Dining/Foyer	Vitrified Tiles (800 x 800 mm)
Master Bedroom	Laminated Wooden Flooring
Other Bedrooms	Vitrified Tiles (800 x 800 mm)
Restroom (Flooring)	Anti-Skid Ceramic Tiles
Restroom (Dado)	Glazed Ceramic Tiles
Balconies	Ceramic Tiles
Kitchen (Flooring)	Vitrified Tiles (800 x 800 mm)
Kitchen (Dado)	Ceramic Tiles
Utility	Anti-skid Ceramic Tiles

DOORS

Main Door	Teak frame with flush door shutter with veneer and melamine polish
Internal Doors	Hardwood frame with paint finish shutter

WINDOWS

UPVC Window	UPVC Window with mosquito mesh
-------------	--------------------------------

WALL AND CEILING (INTERIOR)

Paint	Emulsion Paint
-------	----------------

KITCHEN AND UTILITY

Kitchen Counter and Sink Provision	Granite top with MS framework support with a SS Sink Water Purifier
------------------------------------	---

RESTROOM

CP and Sanitary Fittings – Kohler/Jaquar or equivalent
Shower partition without door
Granite counter with washbasin

POWER

Power allotted to the flat	1 BHK : 2.5kW
	3 BHK : 4kW
	2.5 BHK : 3kW
	Penthouse : 6kW

BALCONY RAILINGS

Railing	MS Railing
---------	------------

CAR PARKING

Provided

POWER BACK-UP

DG back-up allotted to the flat	1 BHK : 0.75kW
	3 BHK : 1kW
	2.5 BHK : 1kW
	Penthouse : 2kW

RETICULATED PIPED GAS SYSTEM

Piped Gas	Provided
-----------	----------

OTHERS

Video Door Phone
Potted Plants in Balconies
Air Purifier in Living Room (for 1 BHK)
Centralised Air Purifier - Air Purifier in Living Room and all Bedrooms (for apartments other than 1 BHK)

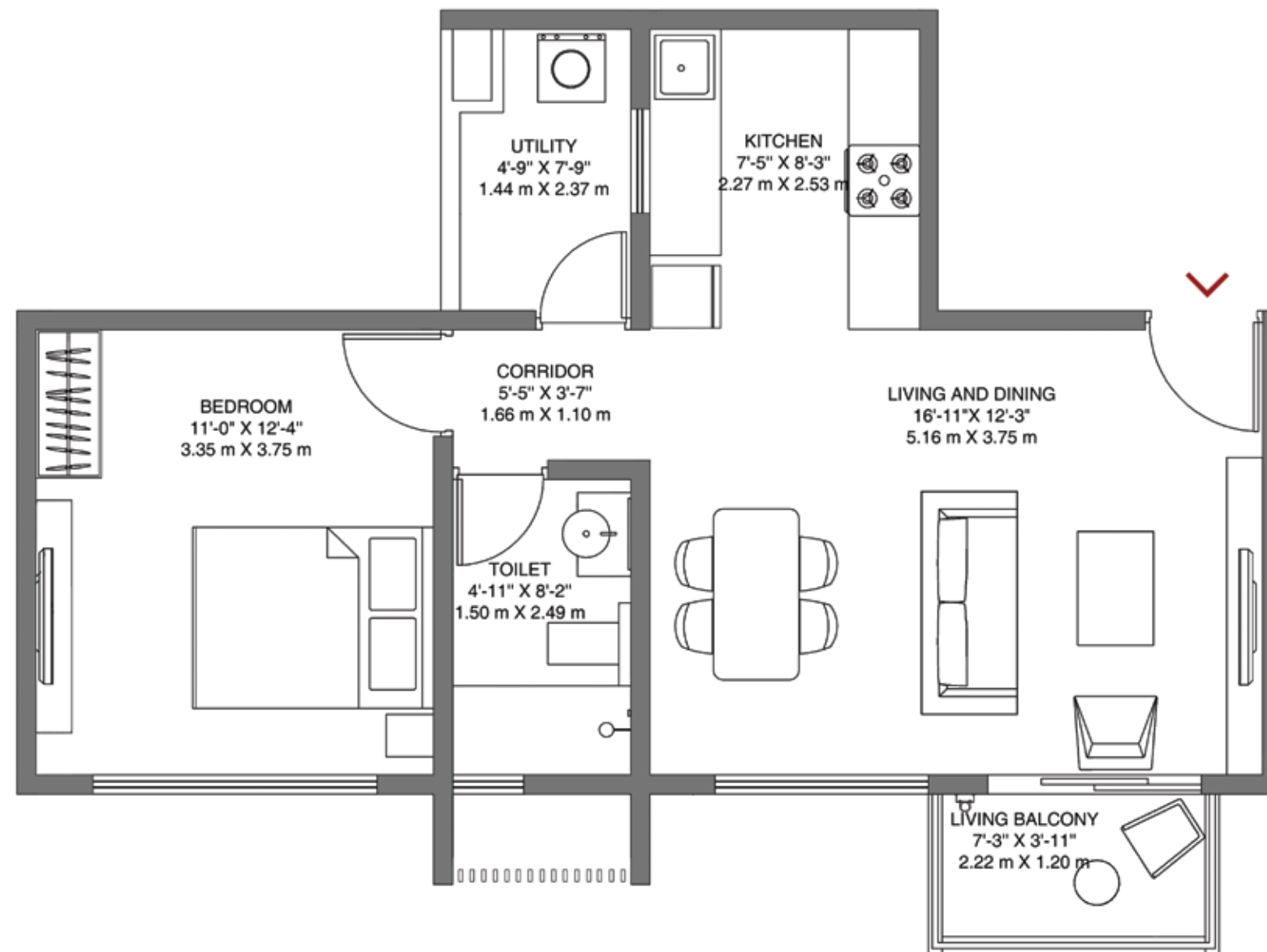
CONFIGURATION TABLE



	CARPET AREA	SALEABLE AREA
	SQ.M.	SQ.M.
1 BHK	47.41	70.82
3 BHK SMART	95.50	145.86
3 BHK COMFORT	106.10	159.45
3 BHK LARGE	111.84	168.83
PENTHOUSE	191.15	295.62







GODREJ AIR NXT

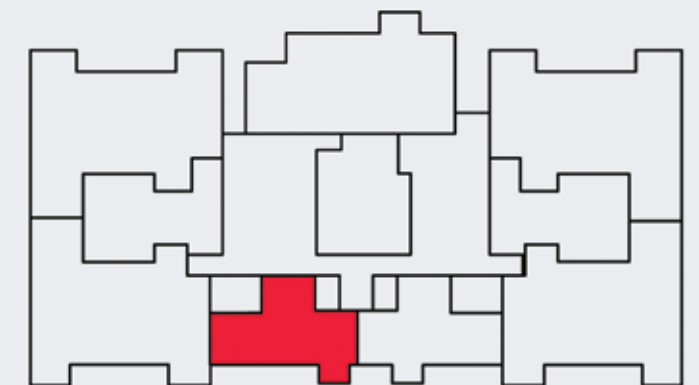
WHITEFIELD, BANGALORE

TOWER - J TYPE - 1 BHK

Floors - 1,3,5,7,9,11,13,15,17

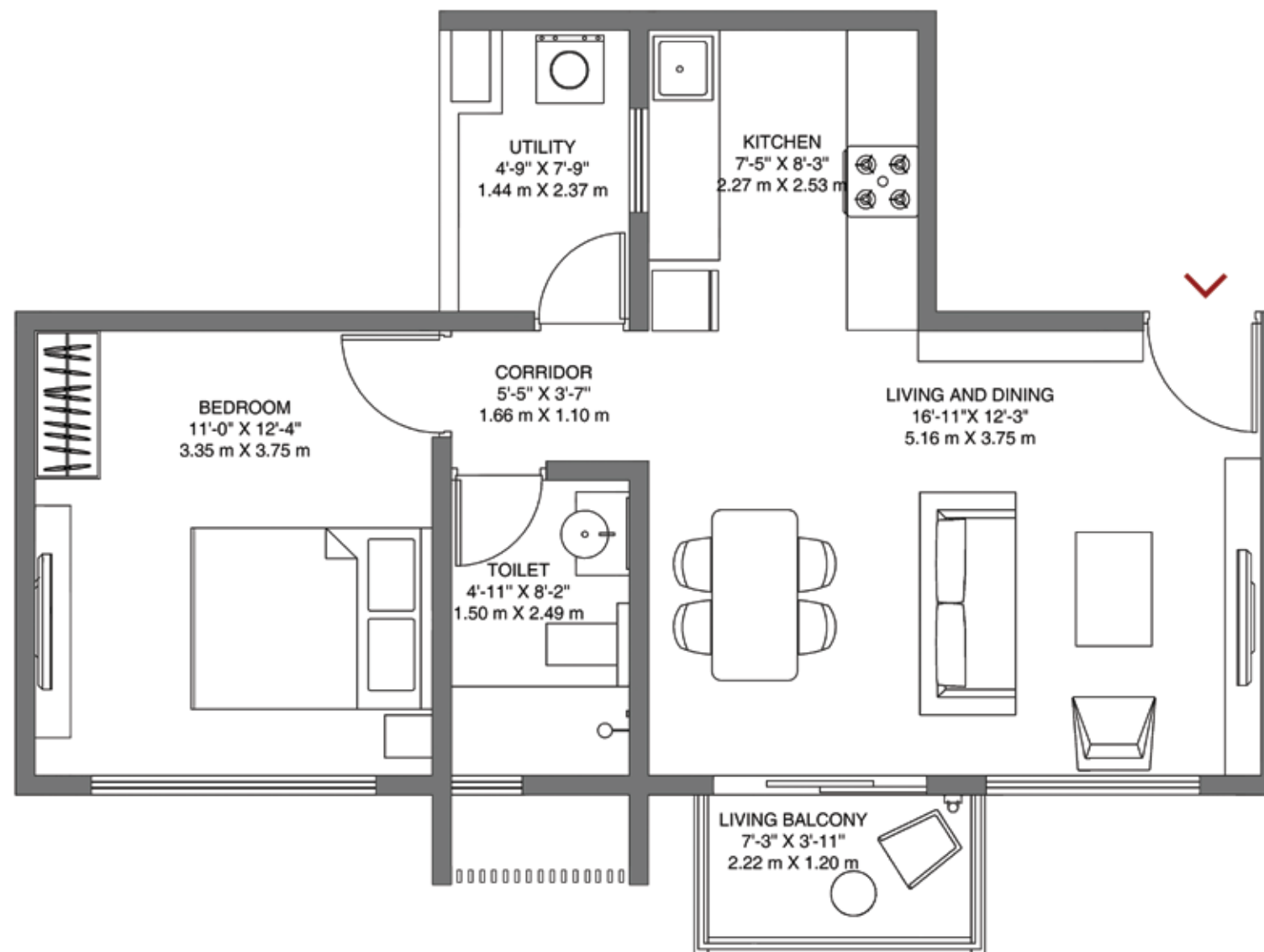
Unit No. - J105, J305, J505, J705, J905,
J1105, J1305, J1505, J1705

Rera Carpet Area: 510 sq.ft (47.42 sq.m)
Balcony Area: 29 sq.ft (2.66 sq.m)



The project is registered as Godrej Air Nxt With
Rera No. PRM/KA/RERA/1251/446/PR/190330/002517,
available at: <http://rera.karnataka.gov.in>





GODREJ AIR NXT

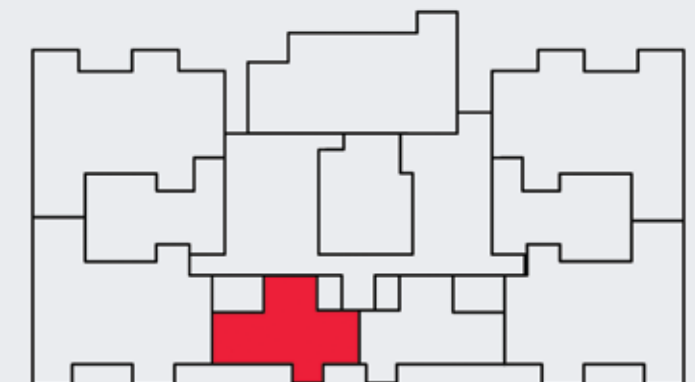
WHITEFIELD, BANGALORE

TOWER - J TYPE - 1 BHK

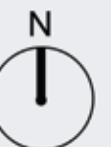
Floors - 2,4,6,8,10,12,14

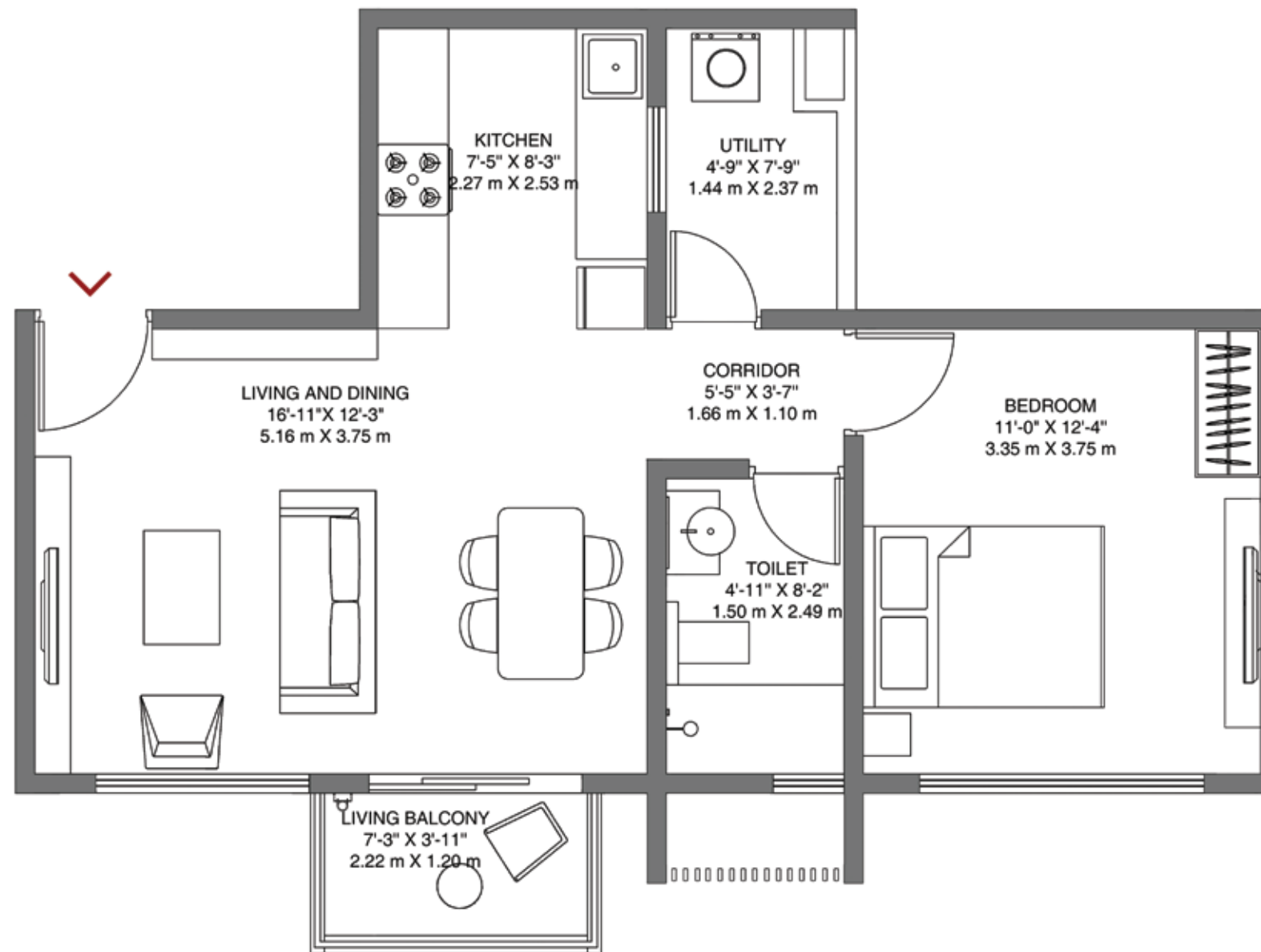
Unit No. - J205, J405, J605, J805, J1005,
J1205, J1405

Rera Carpet Area: 510 sq.ft (47.42 sq.m)
Balcony Area: 29 sq.ft (2.66 sq.m)



The project is registered as Godrej Air Nxt With
Rera No. PRM/KA/RERA/1251/446/PR/190330/002517,
available at: <http://rera.karnataka.gov.in>





GODREJ AIR NXT

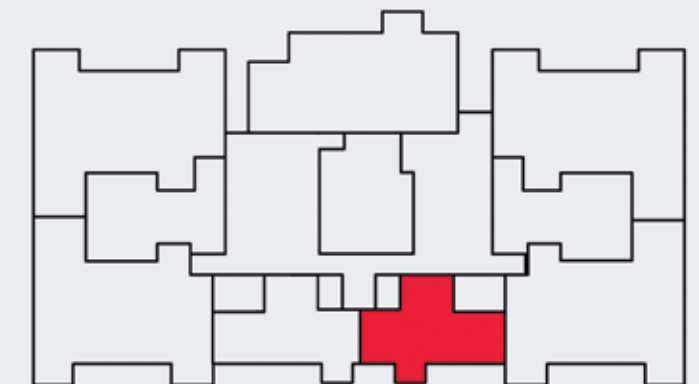
WHITEFIELD, BANGALORE

TOWER - J
TYPE - 1BHK

Floors - 1,3,5,7,9,11,13,15

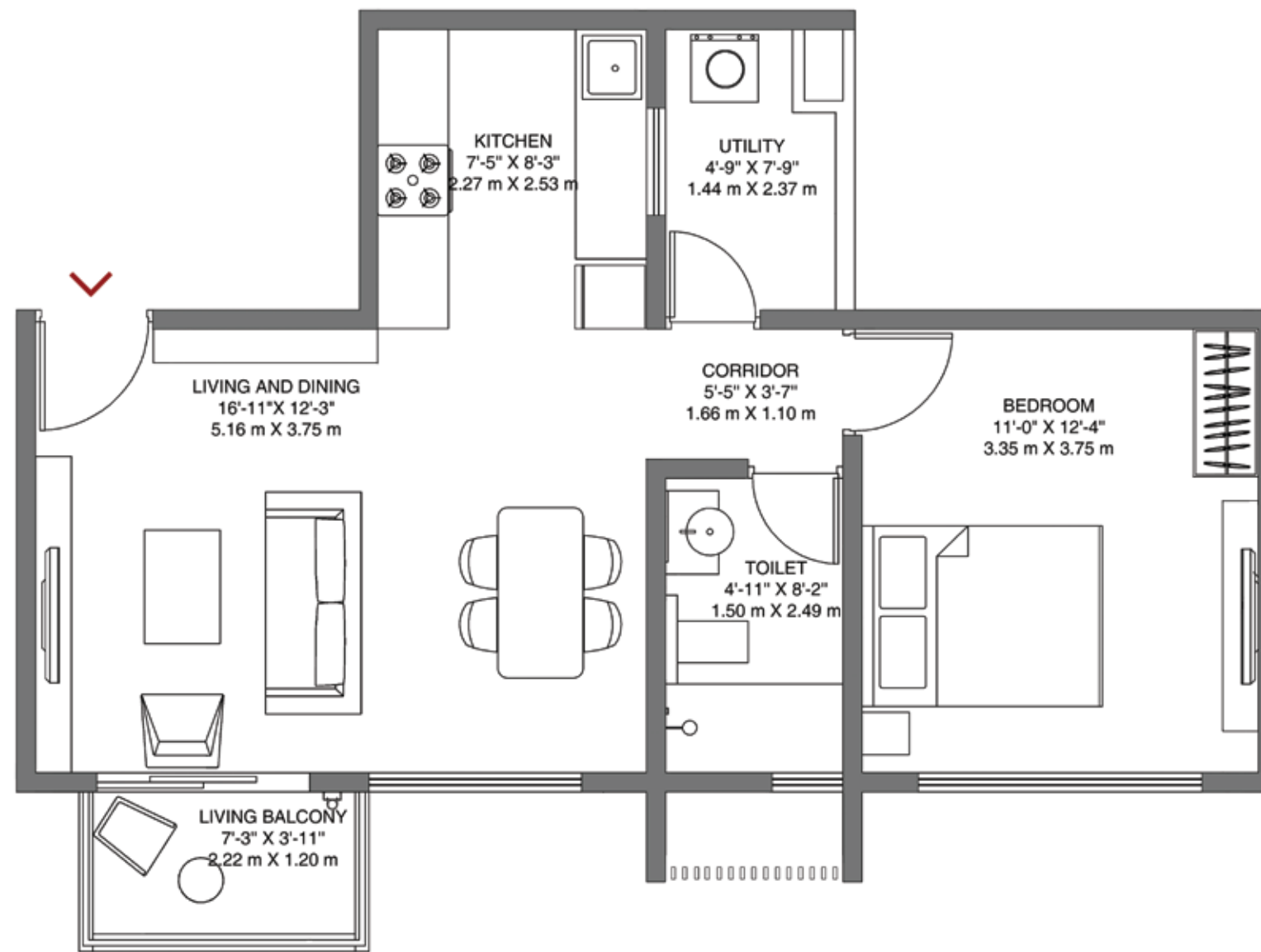
**Unit No. - J104, J304, J504, J704, J904,
J1104, J1304, J1504**

Rera Carpet Area: 510 sq.ft (47.42 sq.m)
Balcony Area: 29 sq.ft (2.66 sq.m)



The project is registered as Godrej Air Nxt With
Rera No. PRM/KA/RERA/1251/446/PR/190330/002517,
available at: <http://rera.karnataka.gov.in>





GODREJ AIR NXT

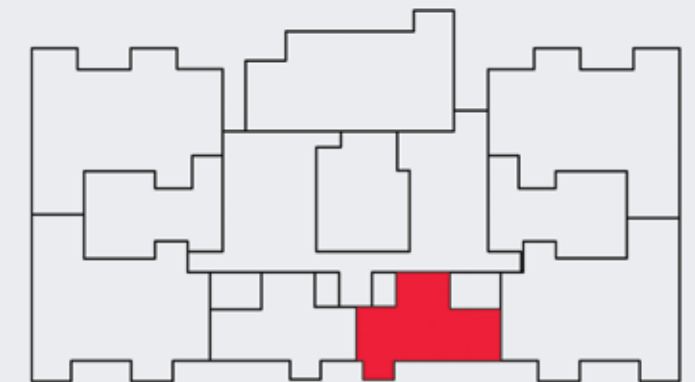
WHITEFIELD, BANGALORE

TOWER - J
TYPE - 1 BHK

Floors - 2,4,6,8,10,12,14

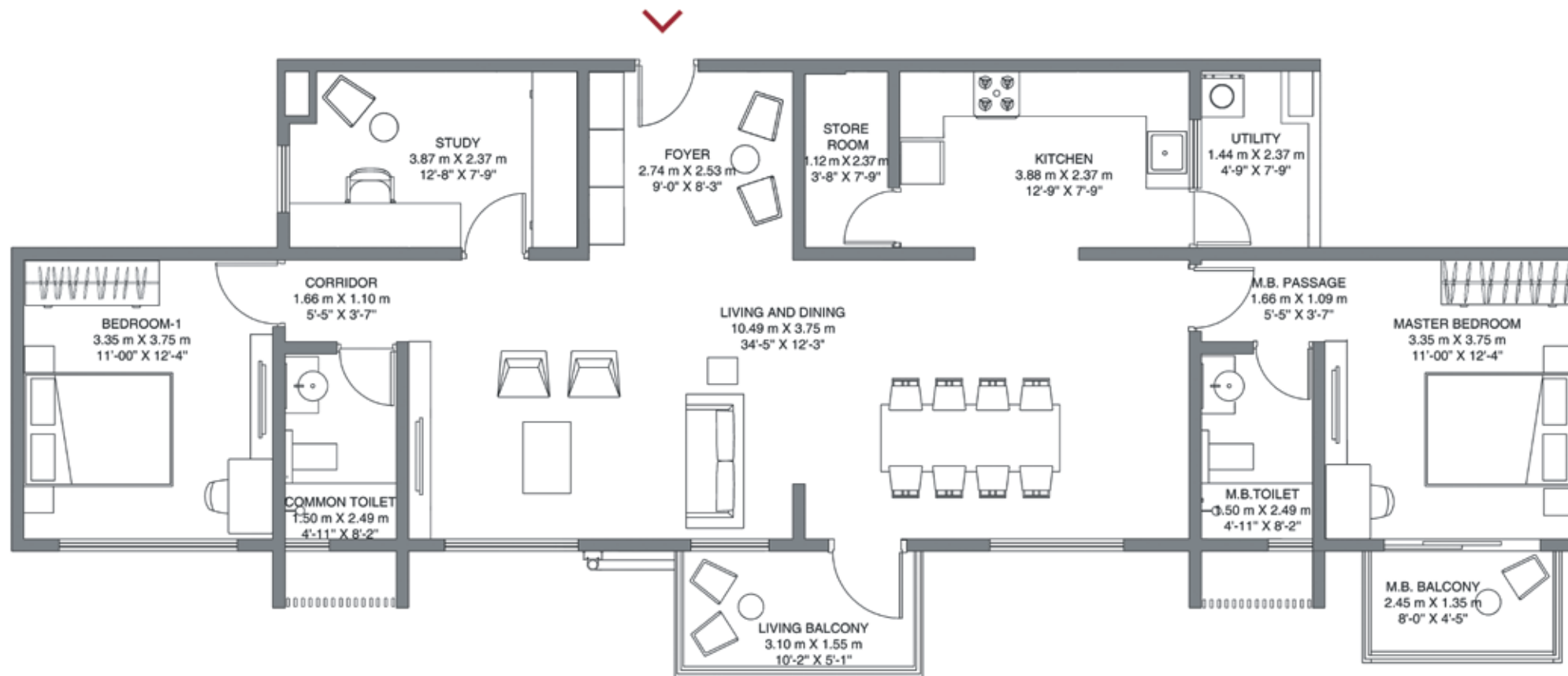
Unit No. - J204, J404, J604, J804, J1004, J1204, J1404

Rera Carpet Area: 510 sq.ft (47.42 sq.m)
Balcony Area: 29 sq.ft (2.66 sq.m)



The project is registered as Godrej Air Nxt With Rera No. PRM/KA/RERA/1251/446/PR/190330/002517, available at: <http://rera.karnataka.gov.in>





GODREJ AIR NXT

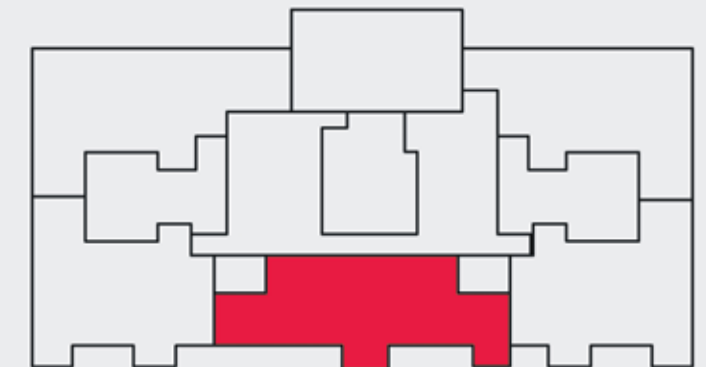
WHITEFIELD, BANGALORE

TOWER - J
TYPE - 2.5 BHK LUXE

Floors - 16

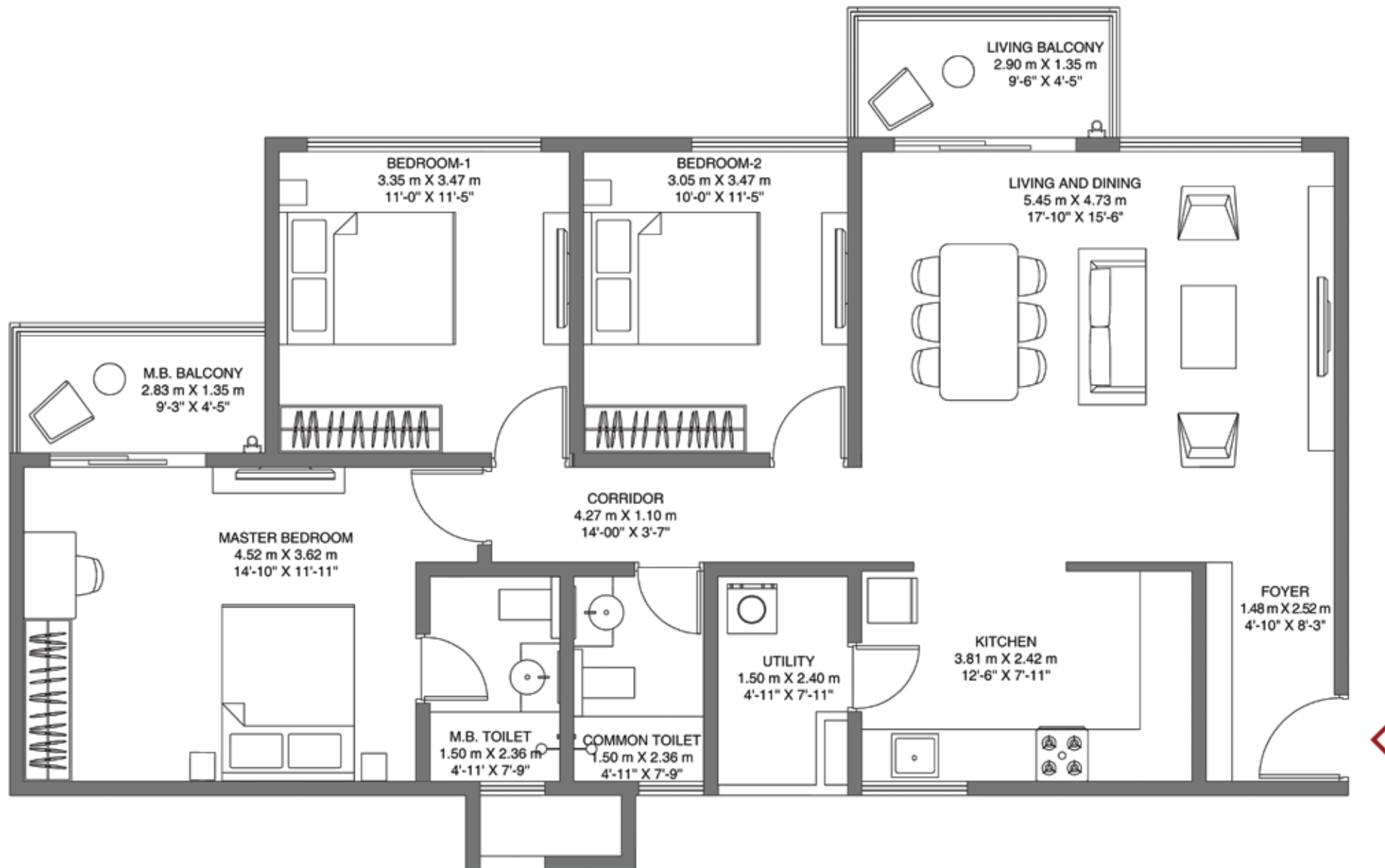
Unit No. - J1602

Rera Carpet Area: 1168 sq.ft (108.54 sq.m)
Balcony Area: 87 sq.ft (8.11 sq.m)



The project is registered as Godrej Air Nxt With
Rera No. PRM/KA/RERA/1251/446/PR/190330/002517,
available at: <http://rera.karnataka.gov.in>





GODREJ AIR NXT

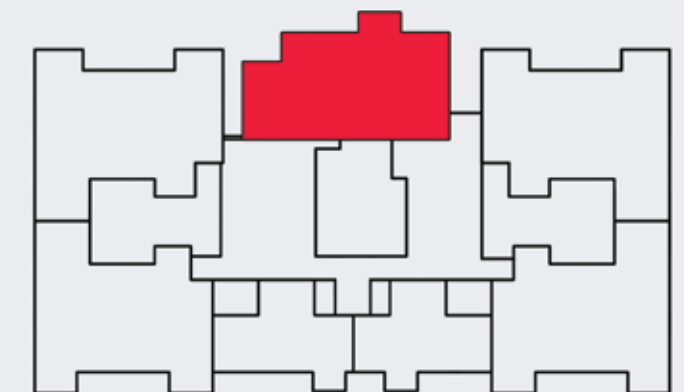
WHITEFIELD, BANGALORE

TOWER - J TYPE - 3BHK SMART

Floors - 1,3,5,7,9,11,13,15

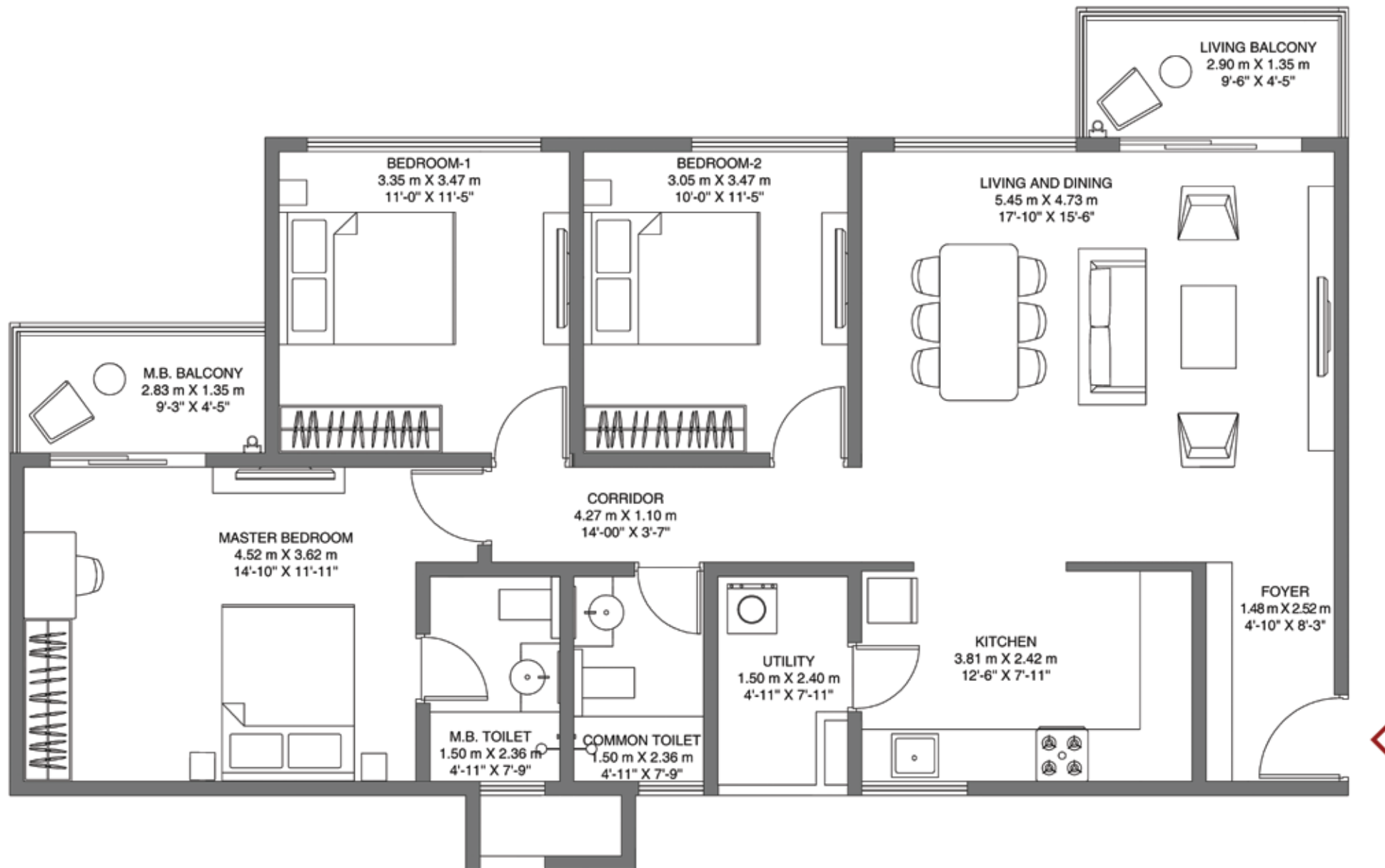
Unit No. - J101, J301, J501, J701, J901,
J1101, J1301, J1501

Rera Carpet Area: 1028 sq.ft (95.51 sq.m)
Balcony Area: 83 sq.ft (7.74 sq.m)



The project is registered as Godrej Air Nxt With
Rera No. PRM/KA/RERA/1251/446/PR/190330/002517,
available at: <http://rera.karnataka.gov.in>





GODREJ AIR NXT

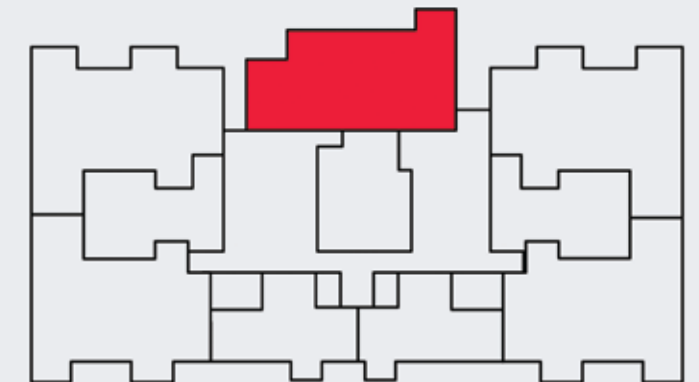
WHITEFIELD, BANGALORE

TOWER - J TYPE - 3BHK SMART

Floors - 2,4,6,8,10,12,14

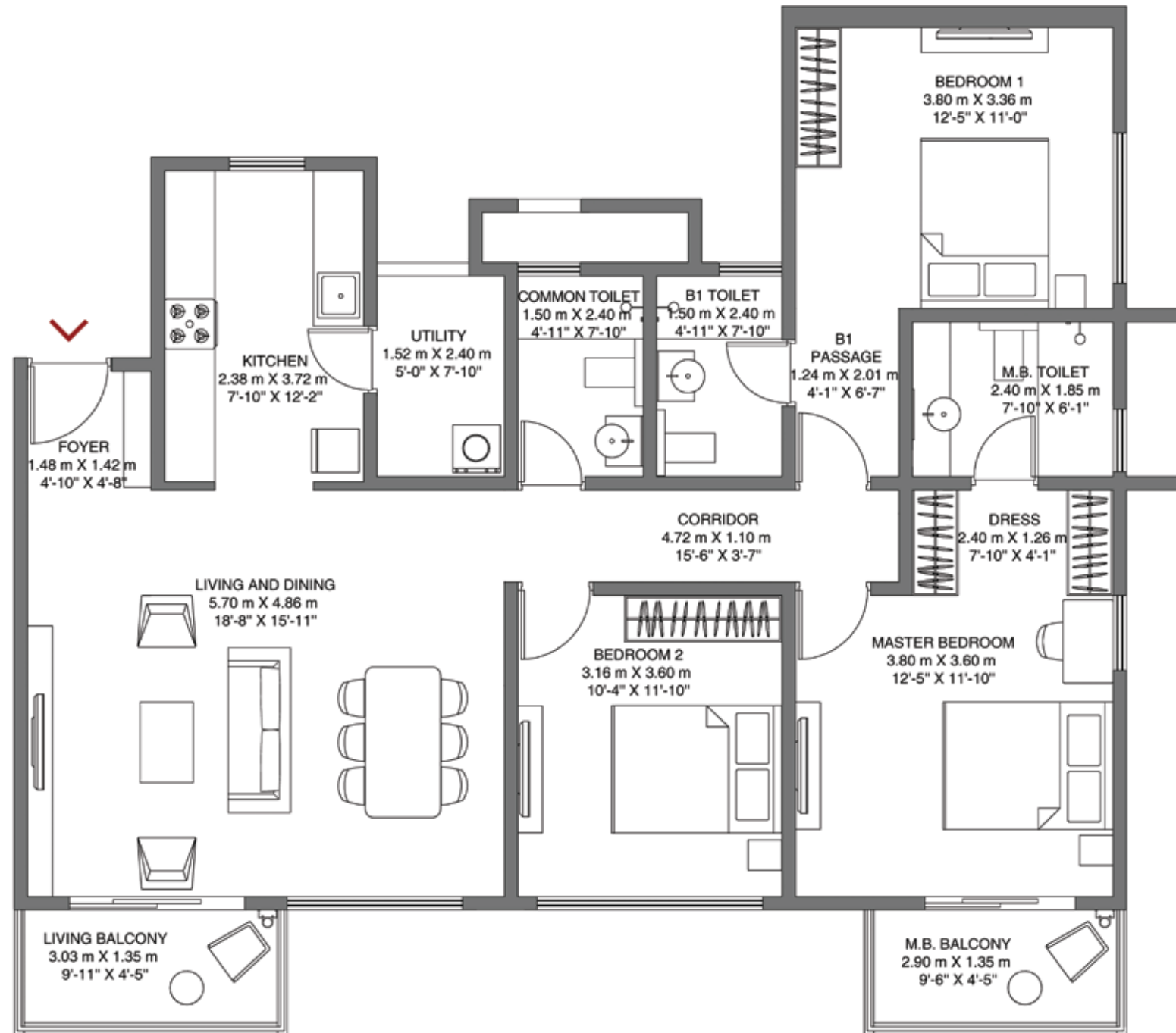
Unit No. - J201, J401, J601, J801, J1001,
J1201, J1401

Rera Carpet Area: 1028 sq.ft (95.51 sq.m)
Balcony Area: 83 sq.ft (7.74 sq.m)



The project is registered as Godrej Air Nxt With
Rera No. PRM/KA/RERA/1251/446/PR/190330/002517,
available at: <http://rera.karnataka.gov.in>





GODREJ AIR NXT

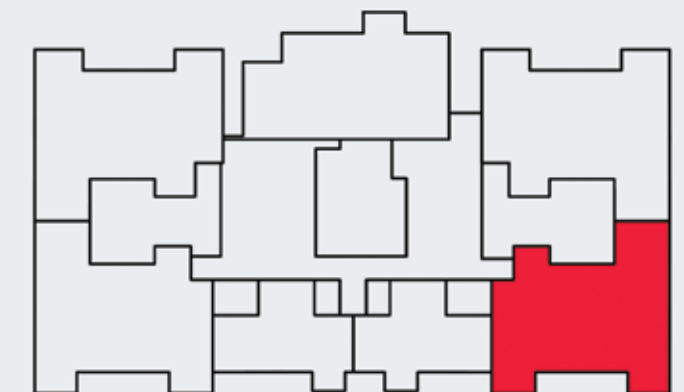
WHITEFIELD, BANGALORE

TOWER - J TYPE - 3BHK COMFORT

Floors - 1,3,5,7,9,11,13,15

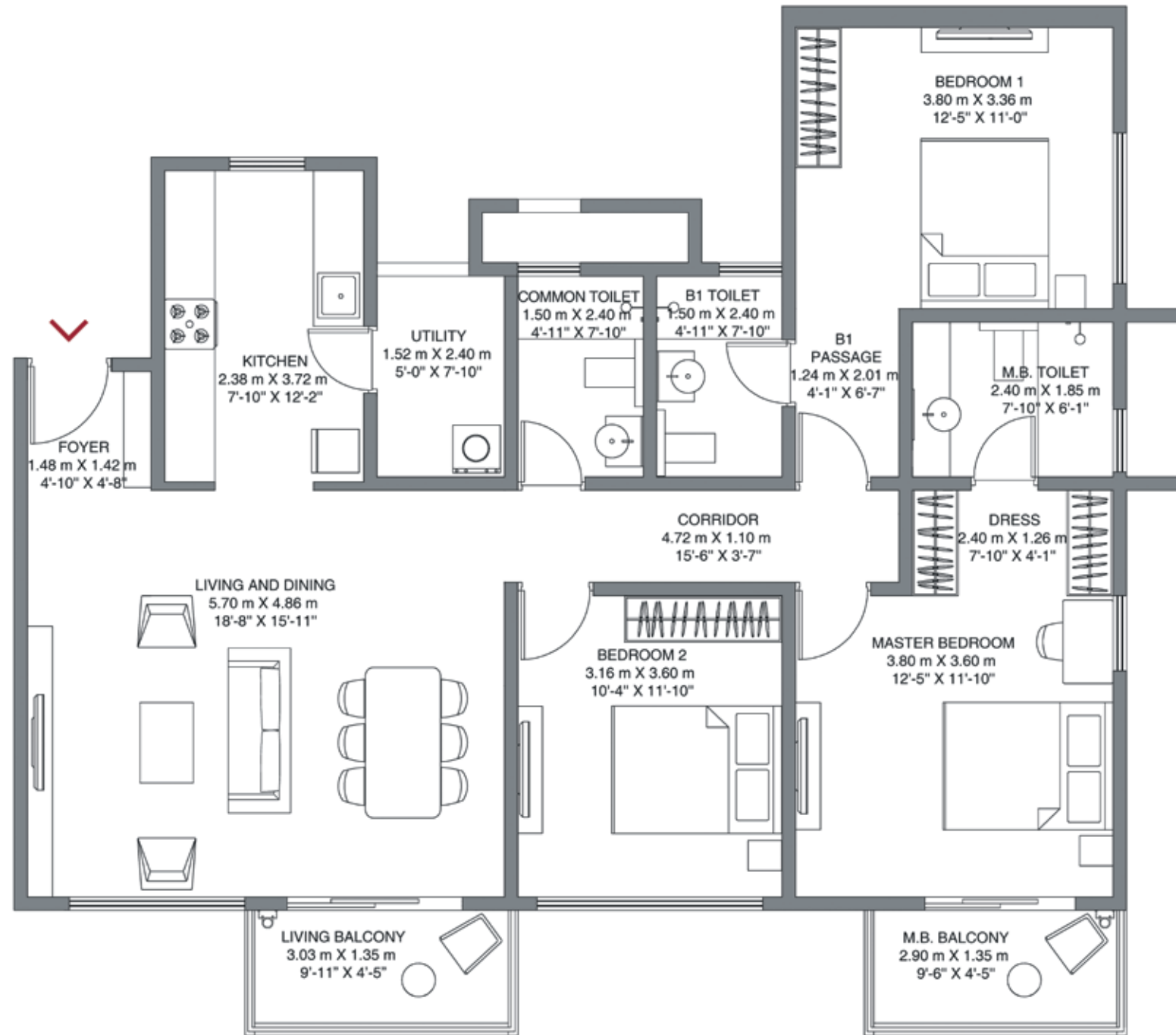
Unit No. - J103, J303, J503, J703, J903,
J1103, J1303, J1503

Rera Carpet Area: 1142 sq.ft (106.11 sq.m)
Balcony Area: 86 sq.ft (8.02 sq.m)



The project is registered as Godrej Air Nxt With
Rera No. PRM/KA/RERA/1251/446/PR/190330/002517,
available at: <http://rera.karnataka.gov.in>





GODREJ AIR NXT

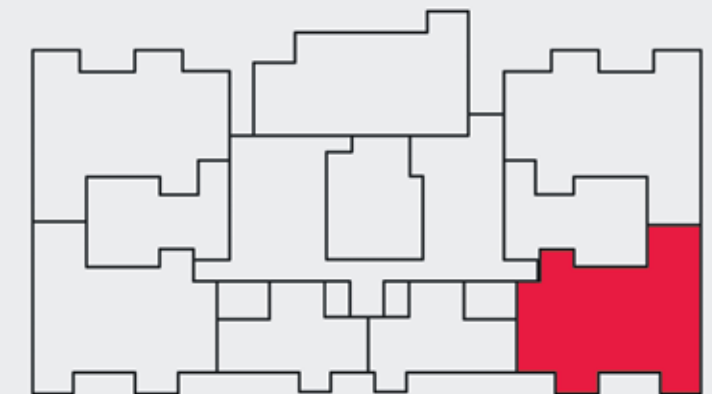
WHITEFIELD, BANGALORE

TOWER - J TYPE - 3BHK COMFORT

Floors - 2,4,6,8,10,12,14

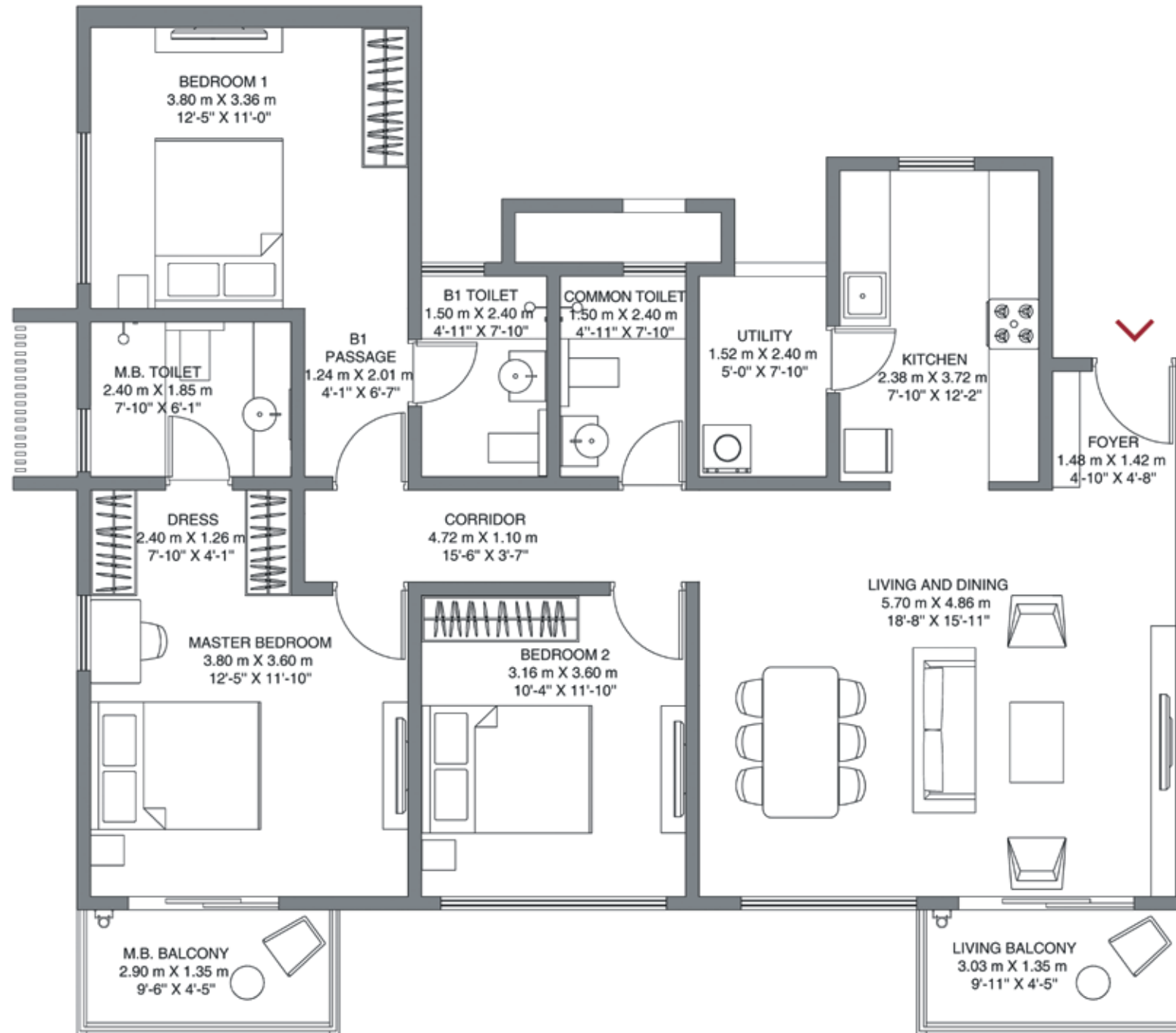
Unit No. - J203, J403, J603, J803, J1003,
J1203, J1403

Rera Carpet Area: 1142 sq.ft (106.11 sq.m)
Balcony Area: 86 sq.ft (8.02 sq.m)



The project is registered as Godrej Air Nxt With
Rera No. PRM/KA/RERA/1251/446/PR/190330/002517,
available at: <http://rera.karnataka.gov.in>





GODREJ AIR NXT

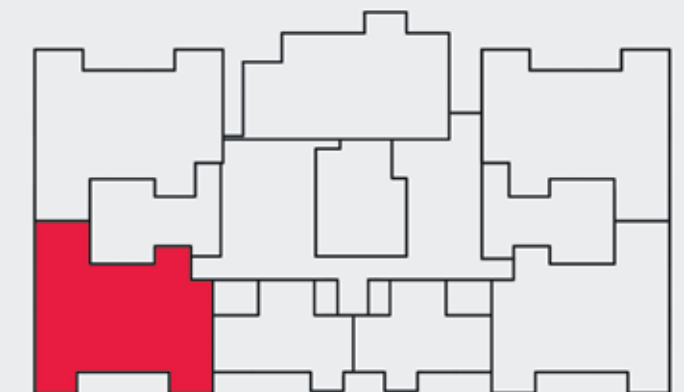
WHITEFIELD, BANGALORE

TOWER - J TYPE - 3BHK COMFORT

Floors - 1,3,5,7,9,11,13,15

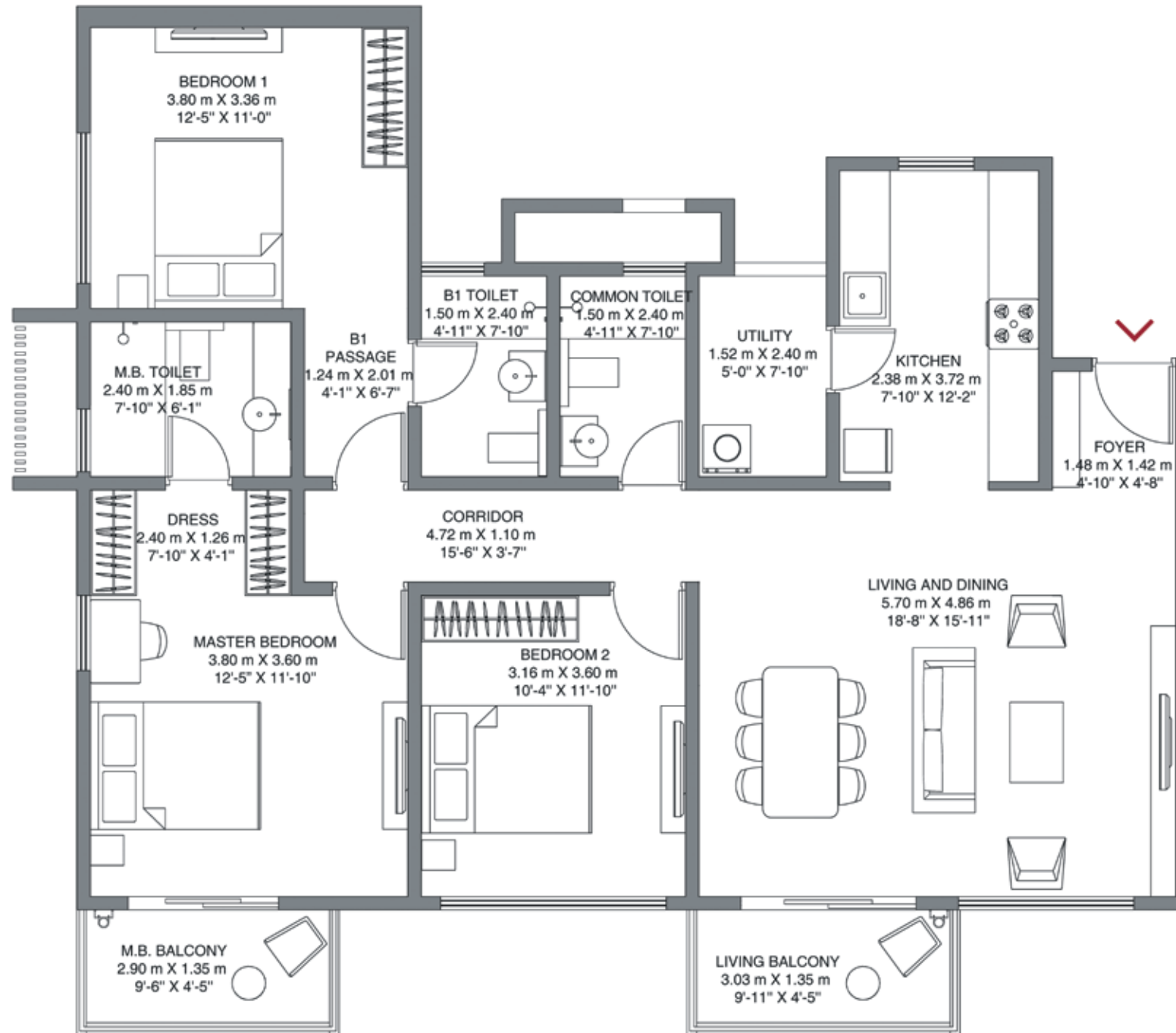
Unit No. - J106, J306, J506, J706, J906,
J1106, J1306, J1506

Rera Carpet Area: 1142 sq.ft (106.11 sq.m)
Balcony Area: 86 sq.ft (8.02 sq.m)



The project is registered as Godrej Air Nxt With
Rera No. PRM/KA/RERA/1251/446/PR/190330/002517,
available at: <http://rera.karnataka.gov.in>





GODREJ AIR NXT

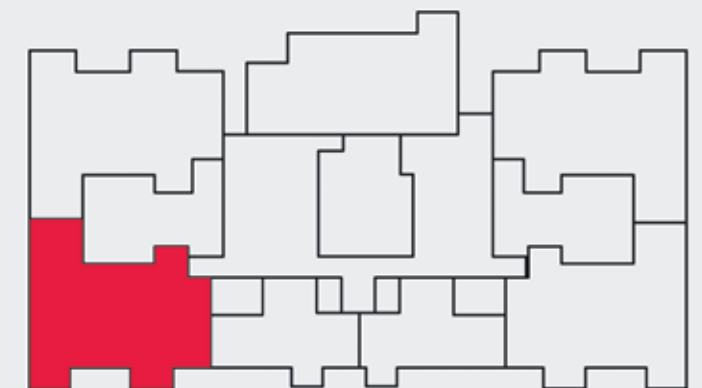
WHITEFIELD, BANGALORE

TOWER - J TYPE - 3BHK COMFORT

Floors - 2,4,6,8,10,12,14

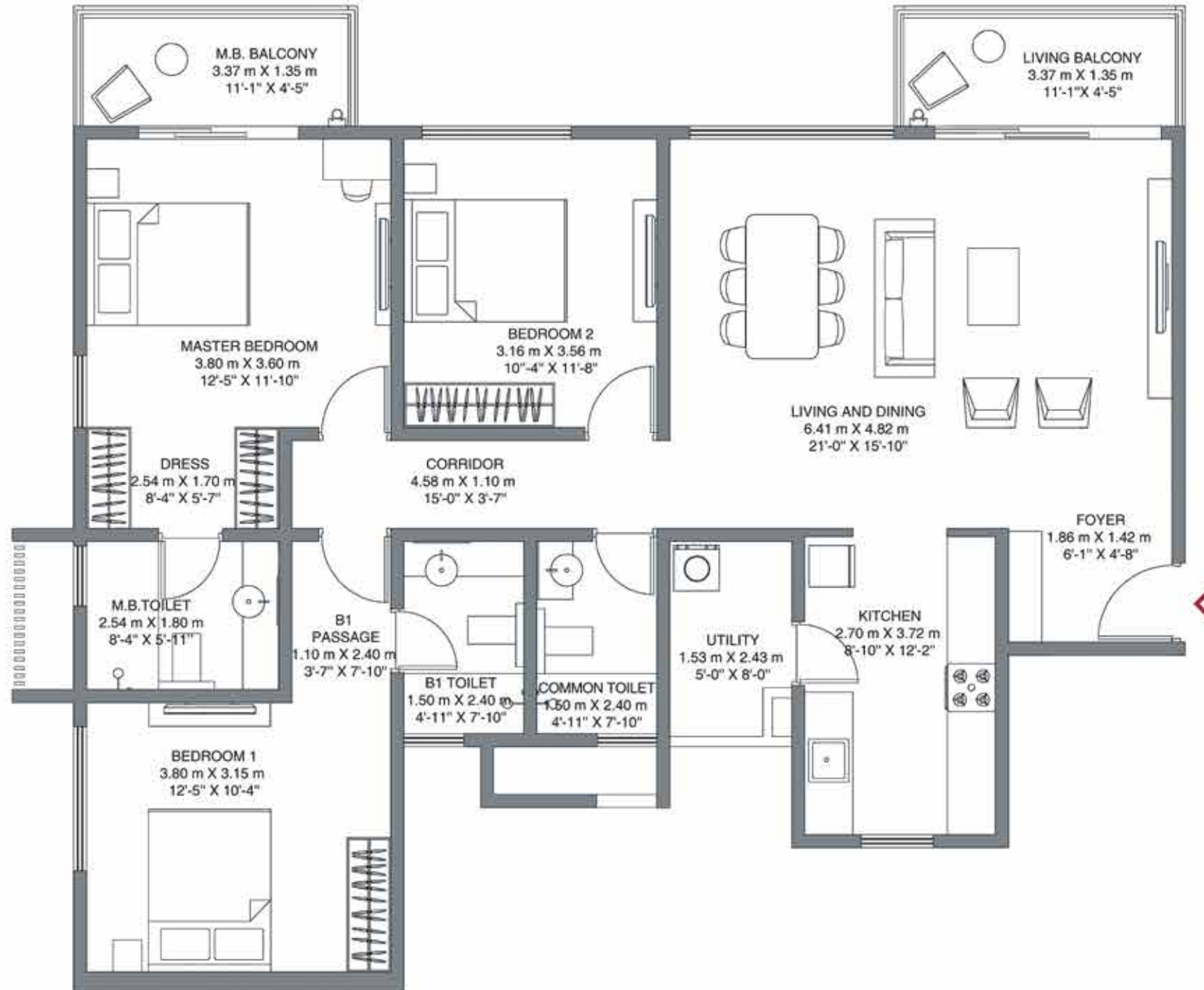
Unit No. - J206, J406, J606, J806, J1006,
J1206, J1406

Rera Carpet Area: 1142 sq.ft (106.11 sq.m)
Balcony Area: 86 sq.ft (8.02 sq.m)



The project is registered as Godrej Air Nxt With
Rera No. PRM/KA/RERA/1251/446/PR/190330/002517,
available at: <http://rera.karnataka.gov.in>





GODREJ AIR NXT

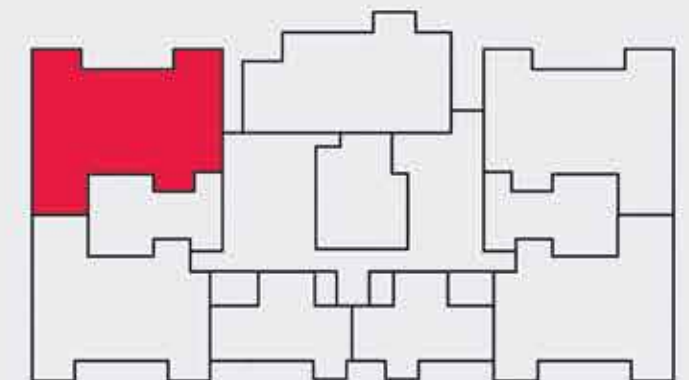
WHITEFIELD, BANGALORE

TOWER - J TYPE - 3BHK LARGE

Floors - 1,3,5,7,9,11,13,15

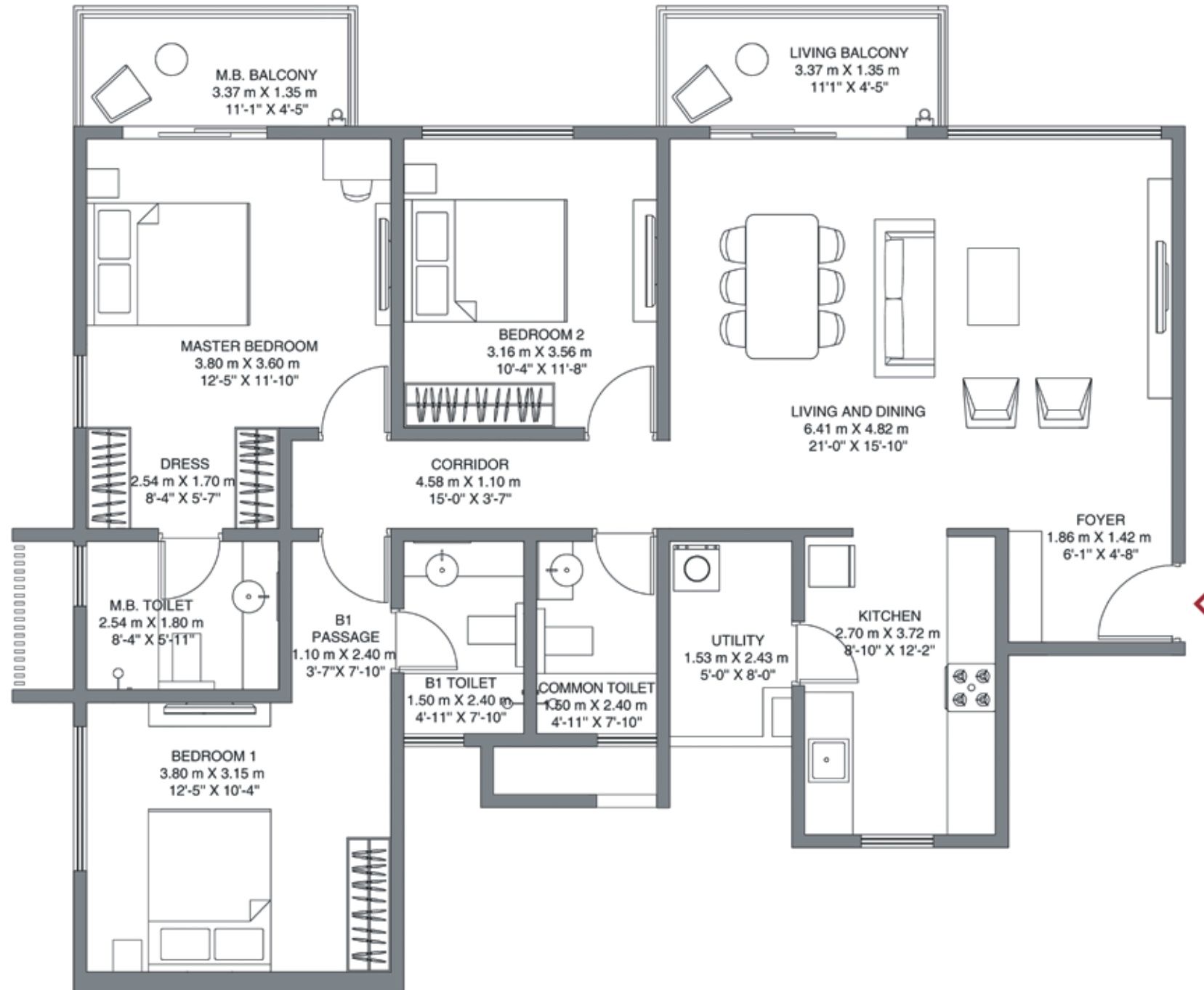
Unit No. - J107, J307, J507, J707, J907,
J1107, J1307, J1507

Rera Carpet Area: 1204 sq.ft (111.84 sq.m)
Balcony Area: 98 sq.ft (9.10 sq.m)



The project is registered as Godrej Air Nxt With
Rera No. PRM/KA/RERA/1251/446/PR/190330/002517,
available at: <http://rera.karnataka.gov.in>





GODREJ AIR NXT

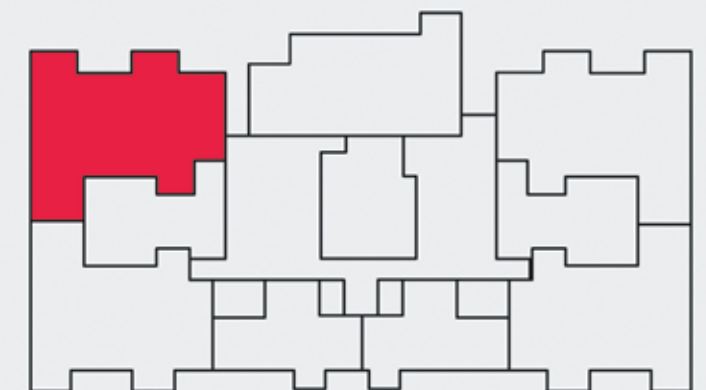
WHITEFIELD, BANGALORE

TOWER - J TYPE - 3BHK LARGE

Floors - 2,4,6,8,10,12,14

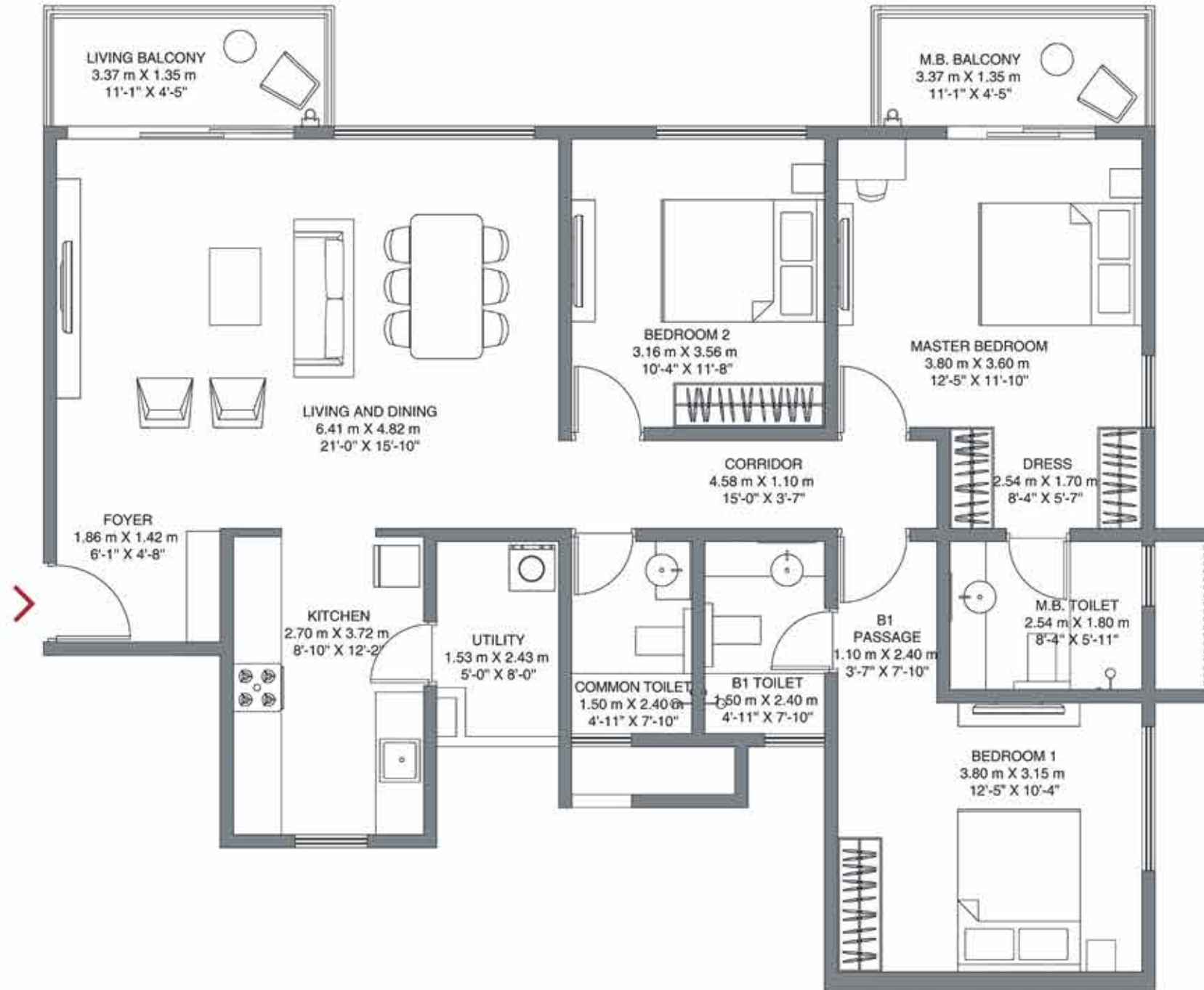
Unit No. - J207, J407, J607, J807, J1007,
J1207, J1407

Rera Carpet Area: 1204 sq.ft (111.84 sq.m)
Balcony Area: 98 sq.ft (9.10 sq.m)



The project is registered as Godrej Air Nxt With
Rera No. PRM/KA/RERA/1251/446/PR/190330/002517,
available at: <http://rera.karnataka.gov.in>





GODREJ AIR NXT

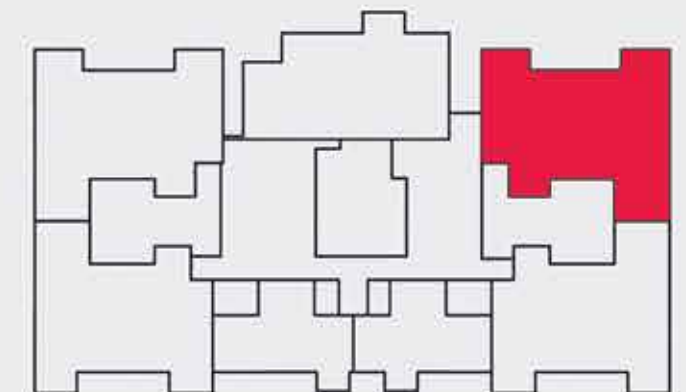
WHITEFIELD, BANGALORE

TOWER - J TYPE - 3BHK LARGE

Floors - 1,3,5,7,9,11,13,15

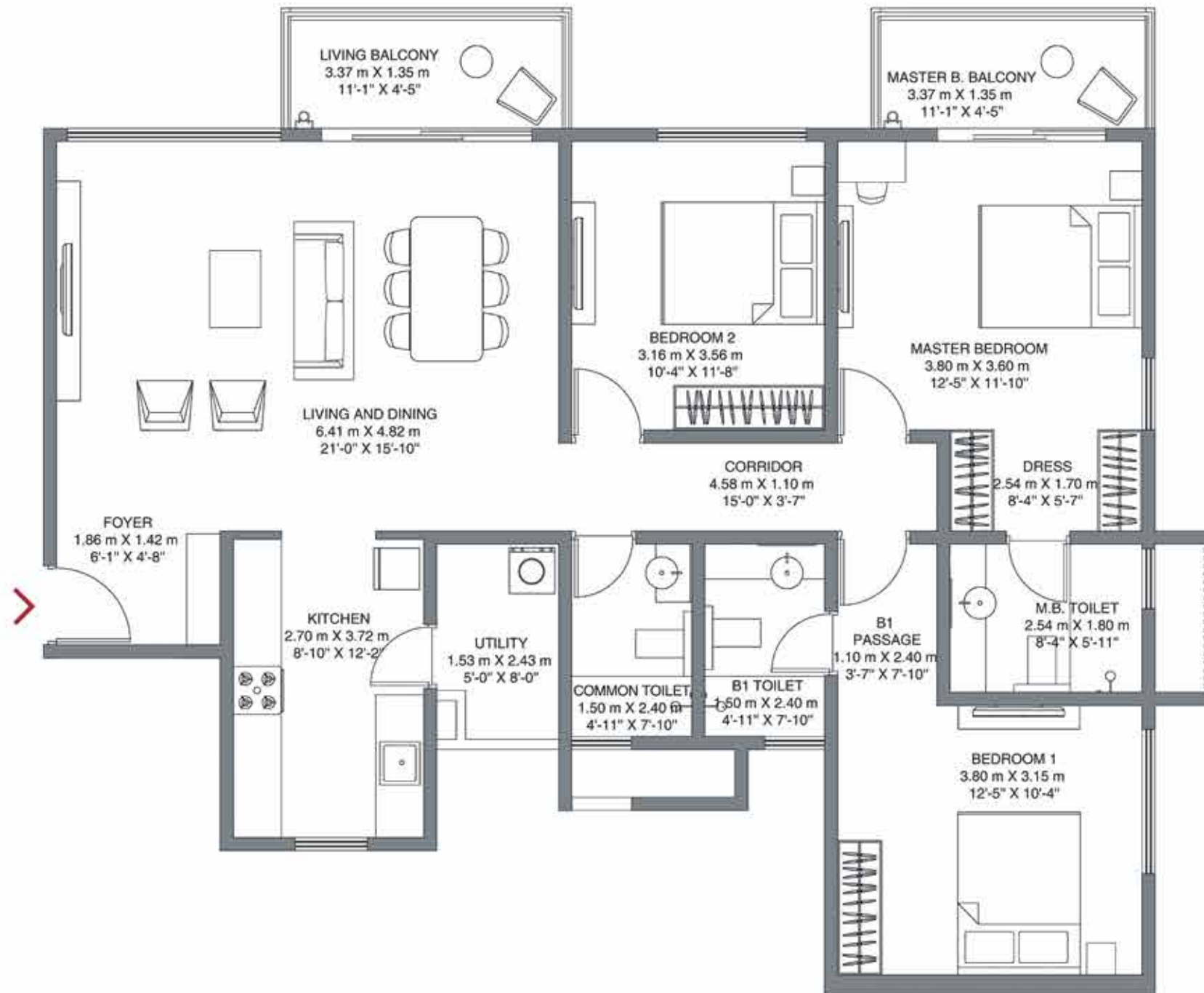
Unit No. - J102, J302, J502, J702, J902,
J1102, J1302, J1502

Rera Carpet Area: 1204 sq.ft (111.84 sq.m)
Balcony Area: 98 sq.ft (9.10 sq.m)



The project is registered as Godrej Air Nxt With
Rera No. PRM/KA/RERA/1251/446/PR/190330/002517,
available at: <http://rera.karnataka.gov.in>





GODREJ AIR NXT

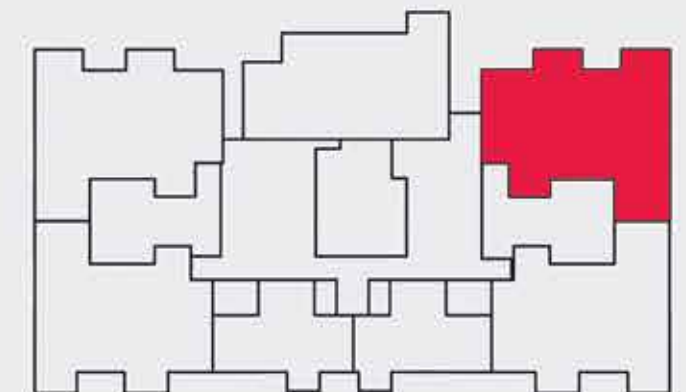
WHITEFIELD, BANGALORE

TOWER - J TYPE - 3BHK LARGE

Floors - 2,4,6,8,10,12,14

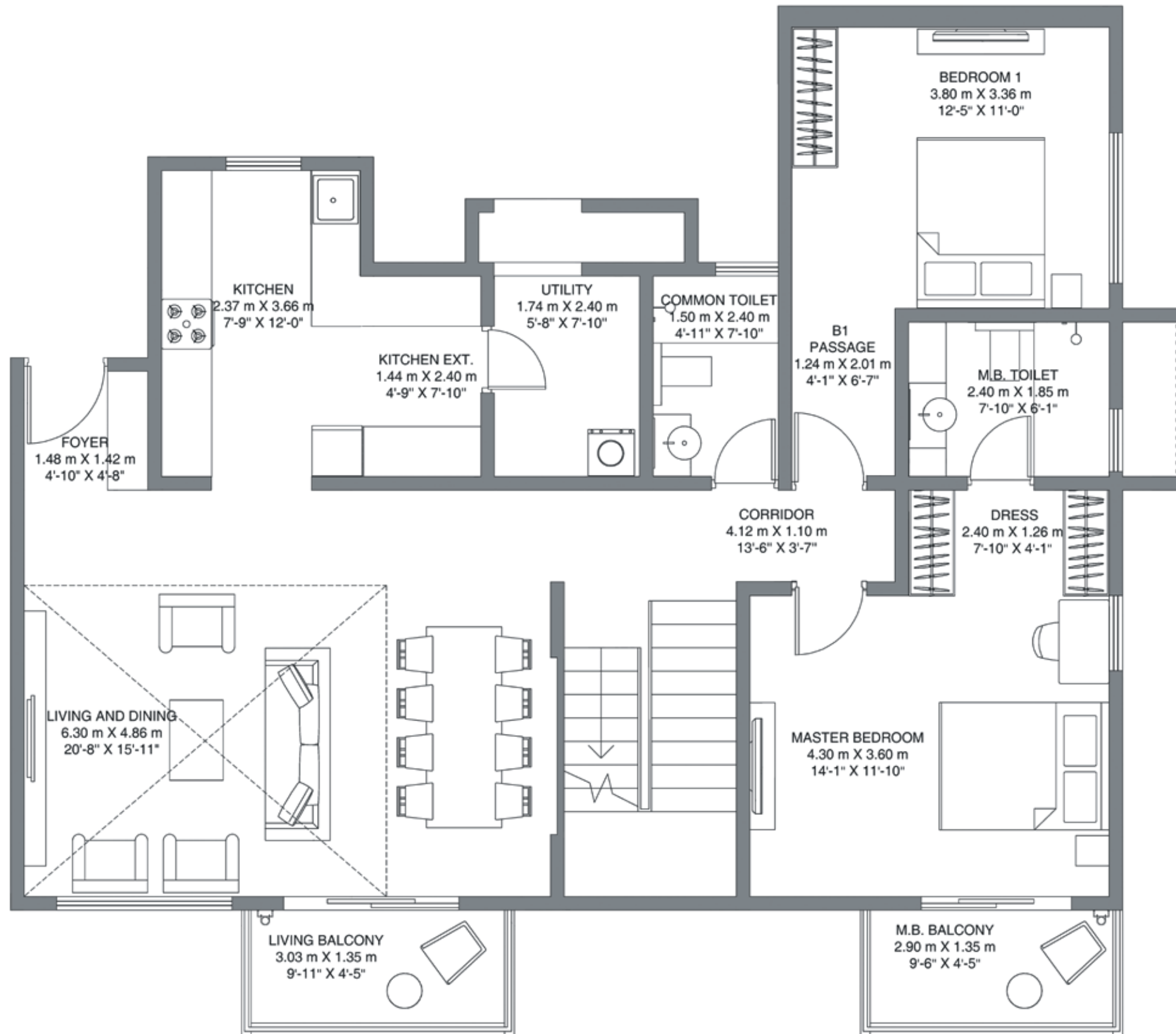
Unit No. - J202, J402, J602, J802, J1002,
J1202, J1402

Rera Carpet Area: 1204 sq.ft (111.84 sq.m)
Balcony Area: 98 sq.ft (9.10 sq.m)



The project is registered as Godrej Air Nxt With
Rera No. PRM/KA/RERA/1251/446/PR/190330/002517,
available at: <http://rera.karnataka.gov.in>





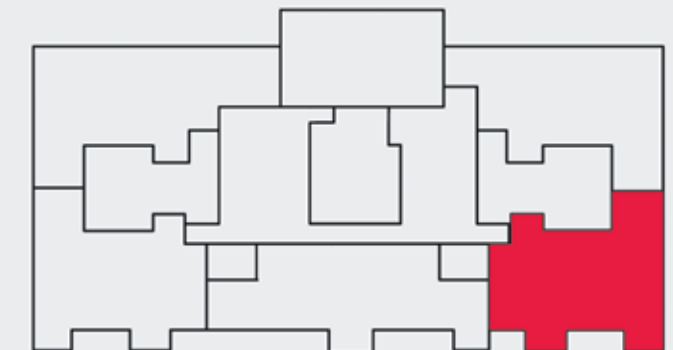
GODREJ AIR NXT

WHITEFIELD, BANGALORE

TOWER - J
TYPE - PENTHOUSE - Lower Level

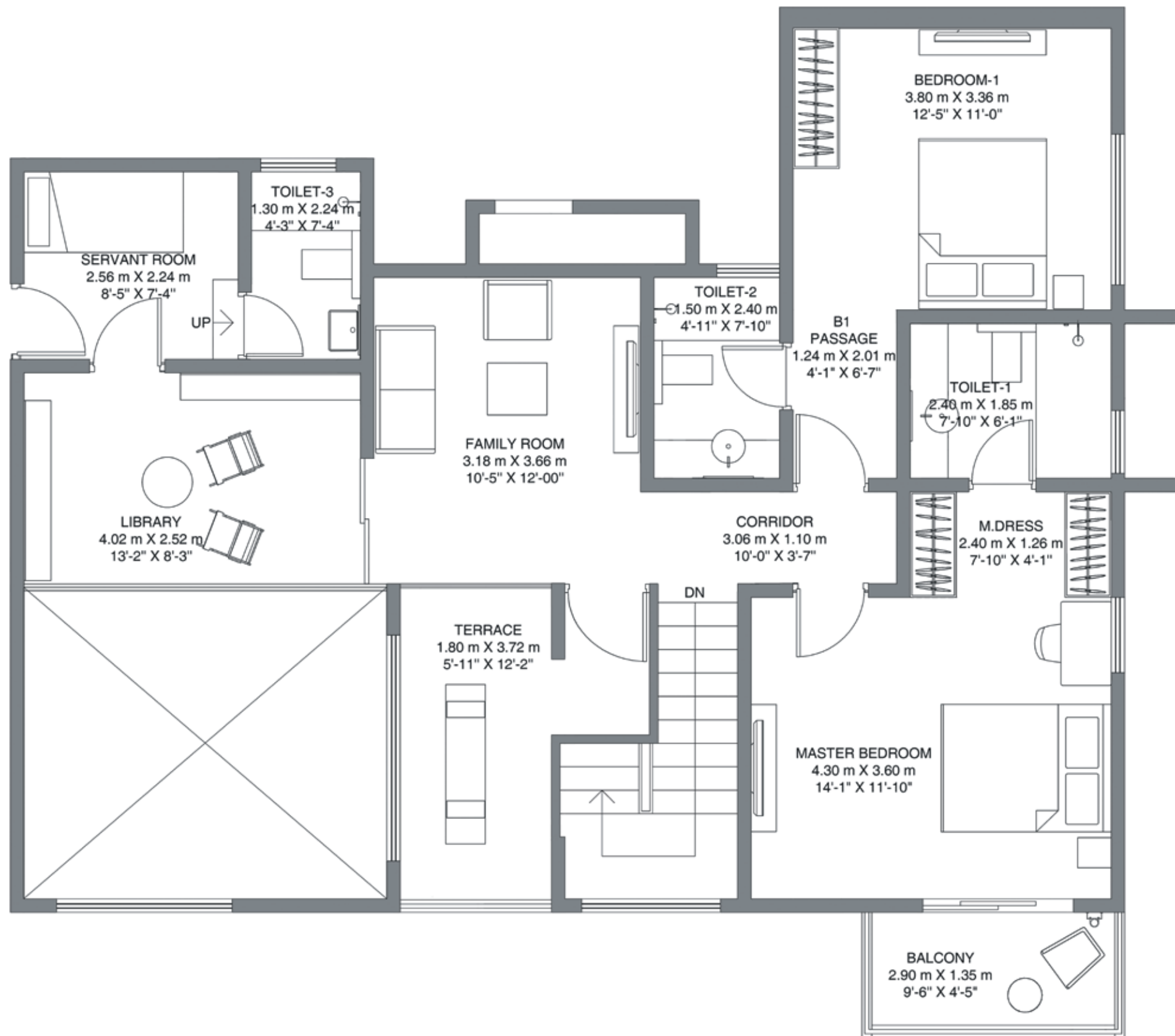
Floors - 16
Unit No. - J1601

Rera Carpet Area: 2058 sq.ft (191.16 sq.m)
Balcony Area: 223 sq.ft (20.72 sq.m)



The project is registered as Godrej Air Nxt With
Rera No. PRM/KA/RERA/1251/446/PR/190330/002517,
available at: <http://rera.karnataka.gov.in>





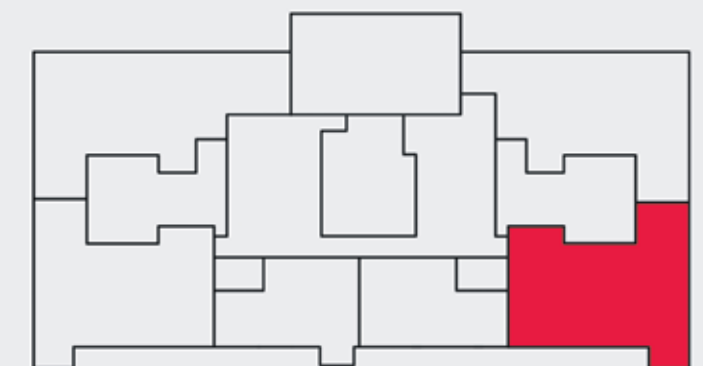
GODREJ AIR NXT

WHITEFIELD, BANGALORE

TOWER - J
TYPE - PENTHOUSE - Upper Level

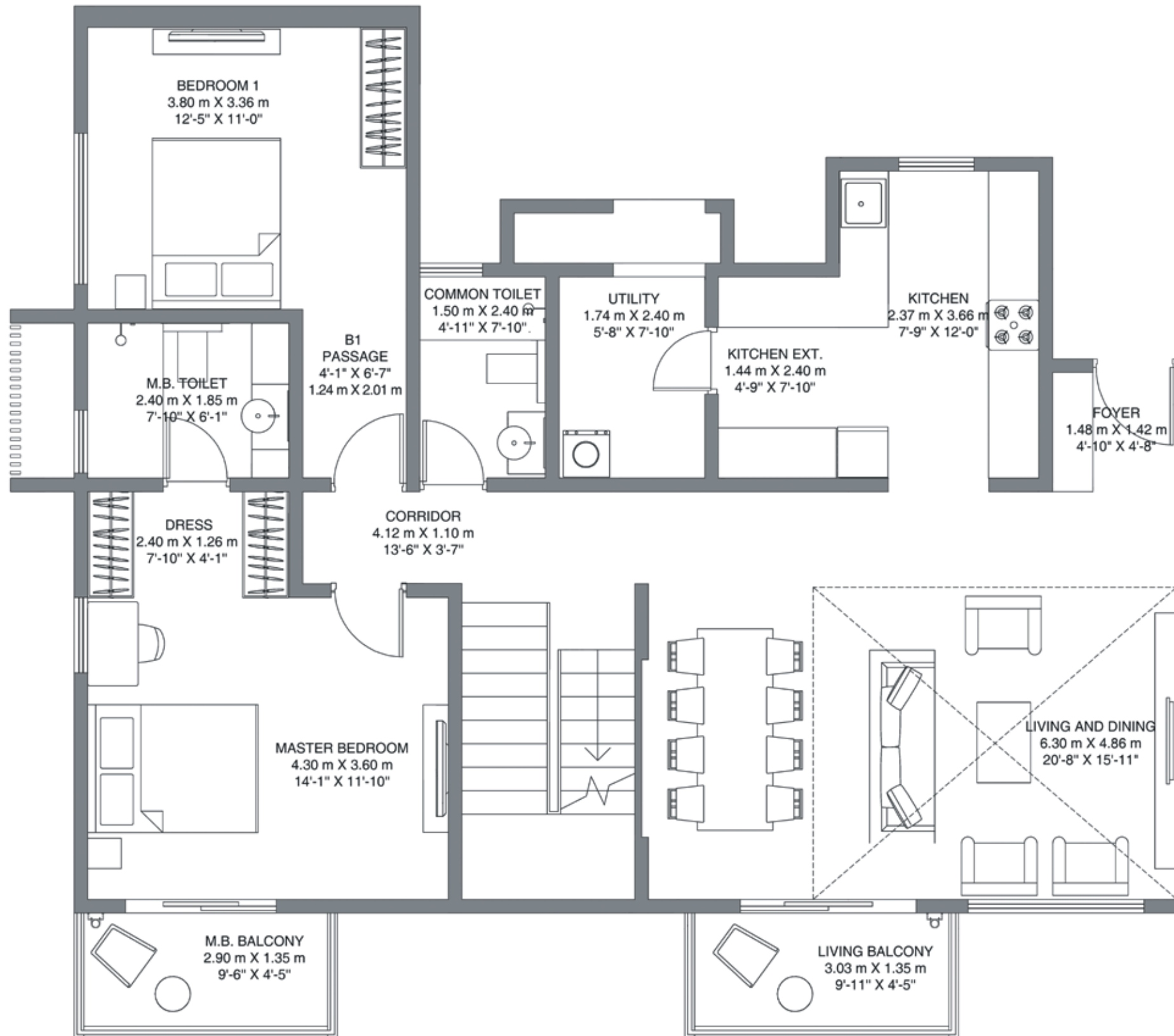
Floors - 17
Unit No. - J1601

Rera Carpet Area: 2058 sq.ft (191.16 sq.m)
Balcony Area: 223 sq.ft (20.72 sq.m)



The project is registered as Godrej Air Nxt With
Rera No. PRM/KA/RERA/1251/446/PR/190330/002517,
available at: <http://rera.karnataka.gov.in>





GODREJ AIR NXT

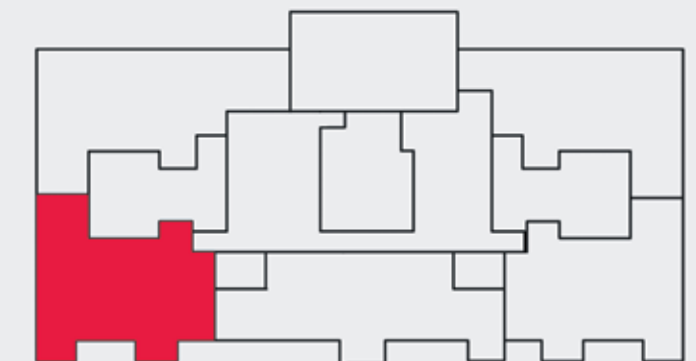
WHITEFIELD, BANGALORE

TOWER - J
TYPE - PENTHOUSE - Lower Level

Floors - 16

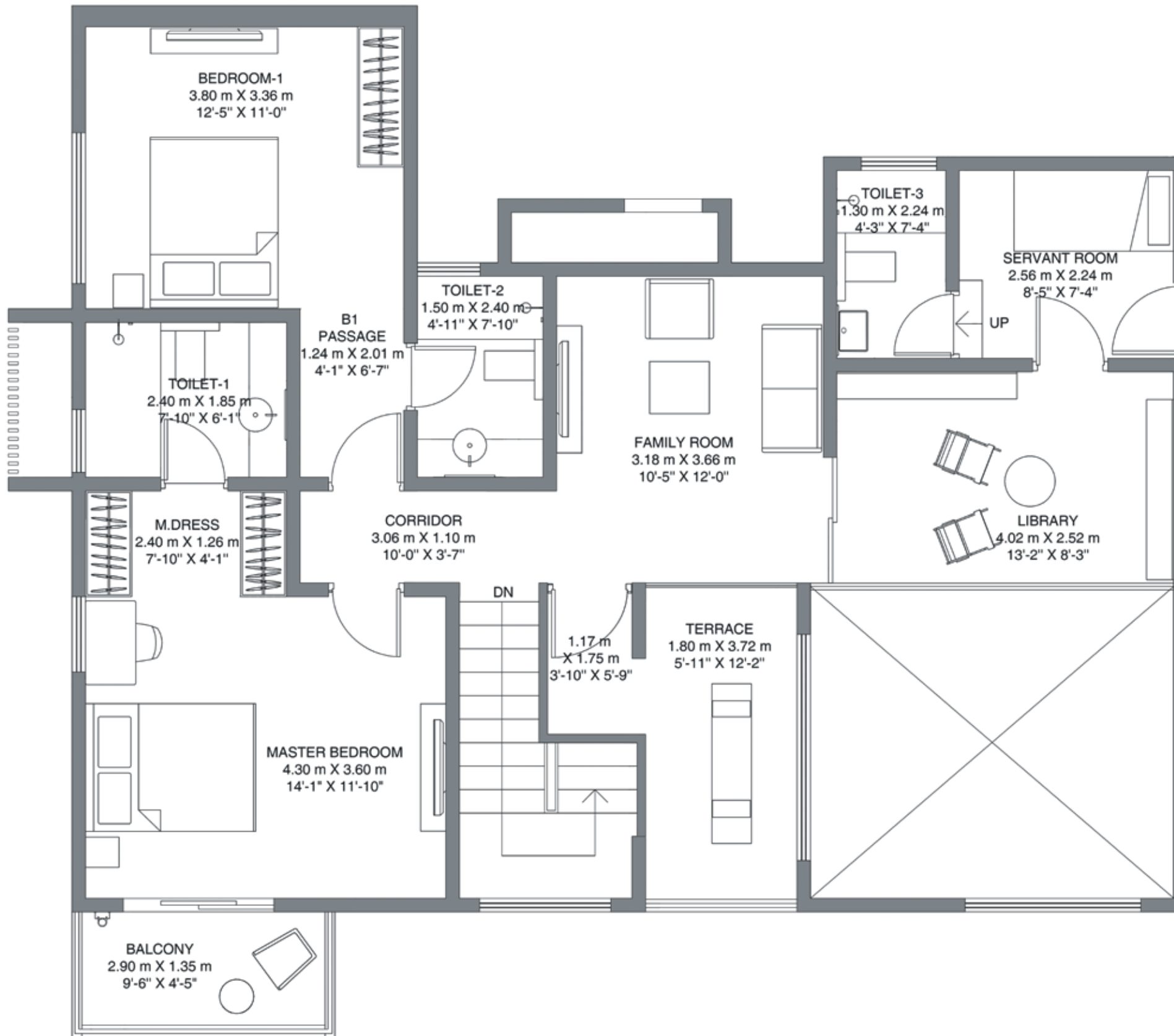
Unit No. - J1603

Rera Carpet Area: 2058 sq.ft (191.16 sq.m)
Balcony Area: 223 sq.ft (20.72 sq.m)



The project is registered as Godrej Air Nxt With
Rera No. PRM/KA/RERA/1251/446/PR/190330/002517,
available at: <http://rera.karnataka.gov.in>





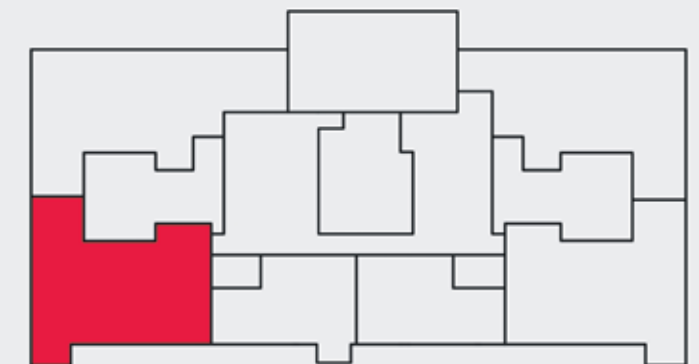
GODREJ AIR NXT

WHITEFIELD, BANGALORE

TOWER - J
TYPE - PENTHOUSE - Upper Level

Floors - 17
Unit No. - J1603

Rera Carpet Area: 2058 sq.ft (191.16 sq.m)
Balcony Area: 223 sq.ft (20.72 sq.m)



The project is registered as Godrej Air Nxt With
Rera No. PRM/KA/RERA/1251/446/PR/190330/002517,
available at: <http://rera.karnataka.gov.in>





Site Office address: Godrej Air, Hoodi Main Road, Whitefield, Bangalore- 560048

Regional Office: 10th floor, Prestige Obelisk, Kasturba Rd, Ambedkar Veedhi, Sampangi Rama Nagar, Bengaluru, Karnataka 560001.

The project is registered as Godrej Air Nxt With Rera No. PRM/KA/RERA/1251/446/PR/190330/002517, available at: <http://rera.karnataka.gov.in>

All images shown are artist impressions or Stock Images. All designs, dimension, facilities, specifications, decorative items, furniture, and other details shown are only indicative in nature and do not form part of the standard specifications to be provided in the flat. The sale is subject to the terms of application form and agreement to sale. This information is presented as general information and no warranty is expressly or impliedly given that the completed development will comply in any degree with such artist's impression or anticipated appearance. The official website of the company is www.godrejproperties.com. Please do not rely on the information provided in any other website.