



\*Artist impression

INTRODUCING

  
**Natura**  
Inspired by nature

HIRA Reg: HIRA/P/KOL/2019/000442





HIRA Reg: HIRA/P/KOL/2019/000442

\*Artist impression

# WELCOME TO NATURA





\*Artist impression

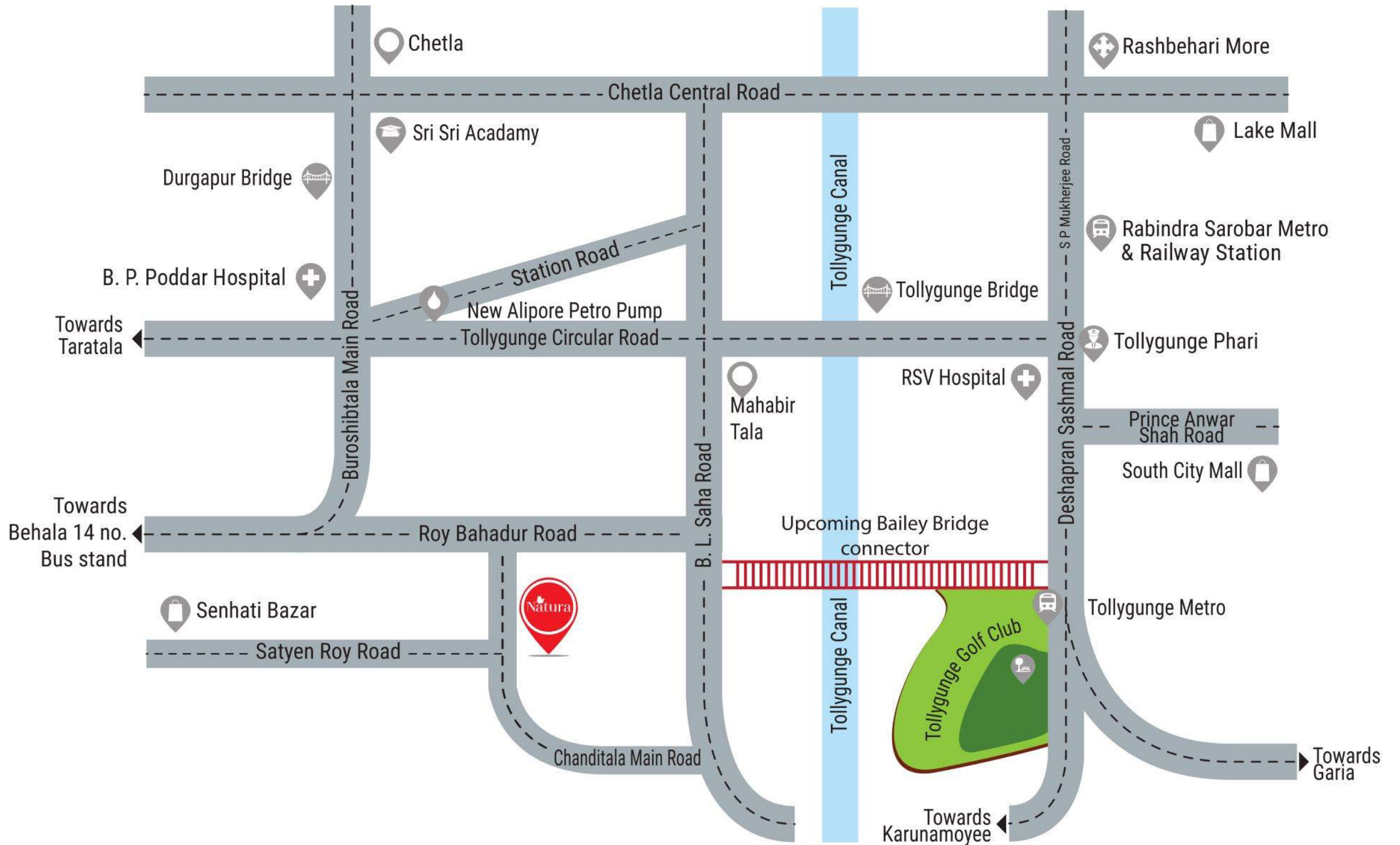
HIRA Reg: HIRA/P/KOL/2019/000442

**4 towers | G+10/G+11 | 3 sides open 2/3/4 BHK | 75% Open Space**



# Where is Natura ?



Inspired by nature





# CLOSER TO EVERYTHING

## CONNECTIVITY

-  Rabindra Sarovar Metro - 2.2 Km
-  Mahanayak Uttam Kumar Metro - 3.1 Km
-  Tollygunge Station - 2.4 Km
-  Tollygunge Bus Depot - 3.1 Km

*All distances are taken from Google Maps*

Presenting **NATURA**, your nature inspired homes where life is greener.

In the heart of **South Kolkata**, Srijan Realty brings you an abode which is a **perfect blend of Luxury & Nature**. NATURA residences are ones which you have always dreamed about.





# CLOSER TO EVERYTHING



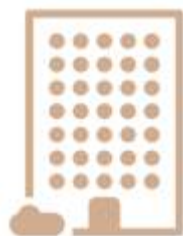
## SCHOOL

- Sri Sri Academy- 2.5KM
- Laxmi Path Singhania Academy- 3.5KM
- MP Birla- 2.2 KM



## MALLS & MULTIPLEX

- South City Mall- 3.8 KM
- Lake Mall - 3.8 KM



## LEISURE

- Tollygunge Club- 2.7 KM
- RCGC- 3KM
- Anderson Club- 4.8 KM



## HOSPITALS

- RSV Hospital: 1.8 KM
- B.P Poddar: 2.2 KM



Natura- 1.5km from New Alipore petrol pump

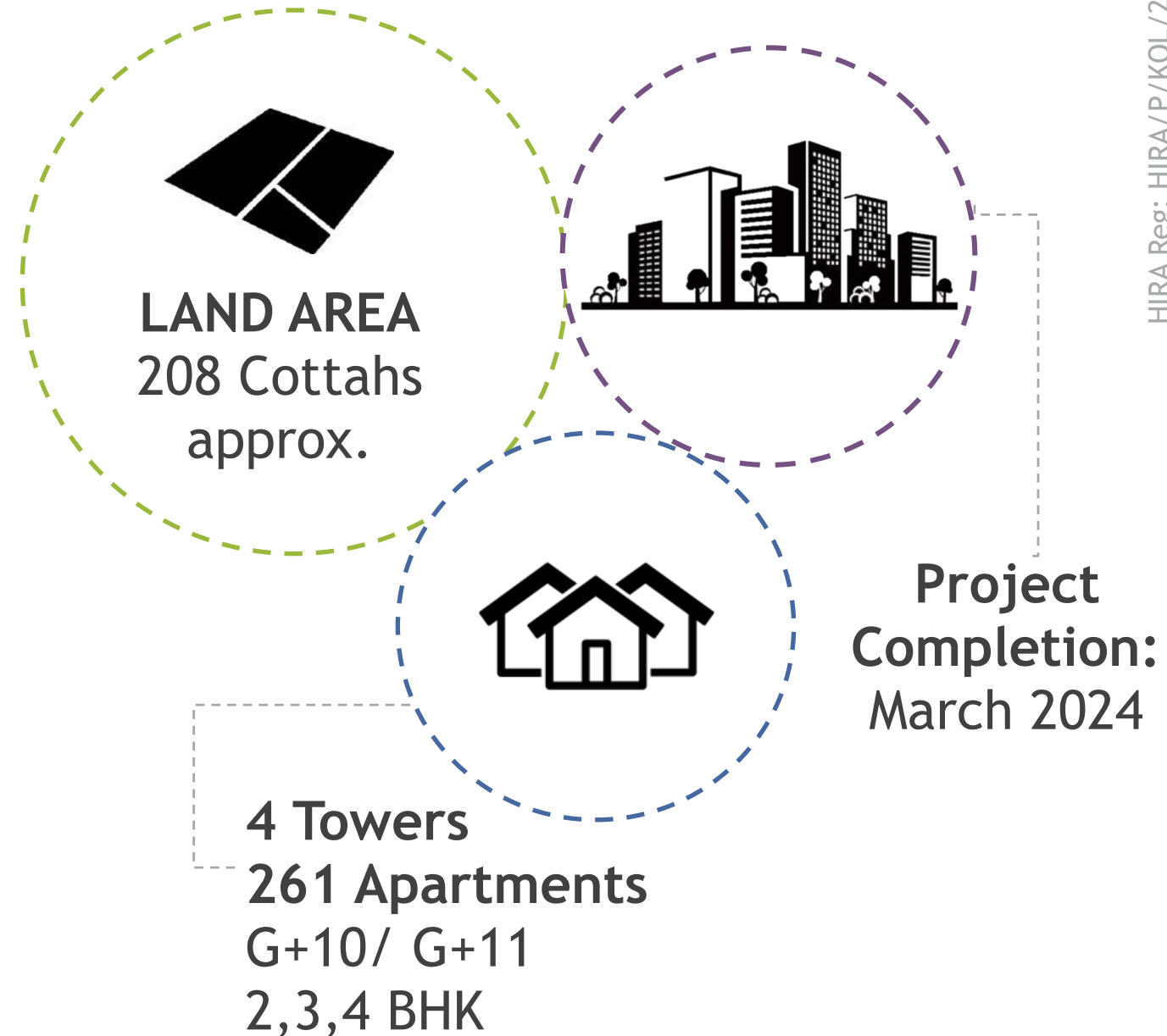


# LIVE IN THE LAP OF NATURE

Imagine a world far from the chaos.

Where it doesn't feel like the city.  
With blue skies, shimmering winds,  
wayward leaves and birdsongs.

Where you don't live amidst Nature  
but your life is inspired by Nature.





Units on offer

**78**

**2BHK-**  
1010 - 1021 sqft

**3BHK-**  
1192 1484 sqft

**6 flats on**  
1st floor

**8 flats on**  
2nd to 10th  
floor

**3 BHK Terrace**  
Flat is available  
on 1st floor

**Block on offer: Block B Wing 1**





2,000+

small and big plants are planned to be planted in the project

# Naturally Yours

HIRA Reg: HIRA/P/KOL/2019/000442



\*Artist impression



# NATURALLY YOURS

**Well ventilated**

Well ventilated, 3 sides open luxury apartments

**Strategic Location**

Well connected to all parts of Kolkata - 1.5 km from New Alipore petrol pump

**International Landscapist**

World class landscaping by International landscapist Tectonix

**Use of Solar Power**

Upto 75% Solar power system for common area

**Preserving Nature**

Rain-water Harvesting & Eco friendly garbage dispose of facility

HIRA Reg: HIRA/P/KOL/2019/000442





HIRA Reg: HIRA/P/KOL/2019/000442

\*Artist impression

Mini-golf area where you can enjoy at weekends



HIRA Reg: HIRA/P/KOL/2019/000442



\*Artist impression

# Outdoor Kids Play Area



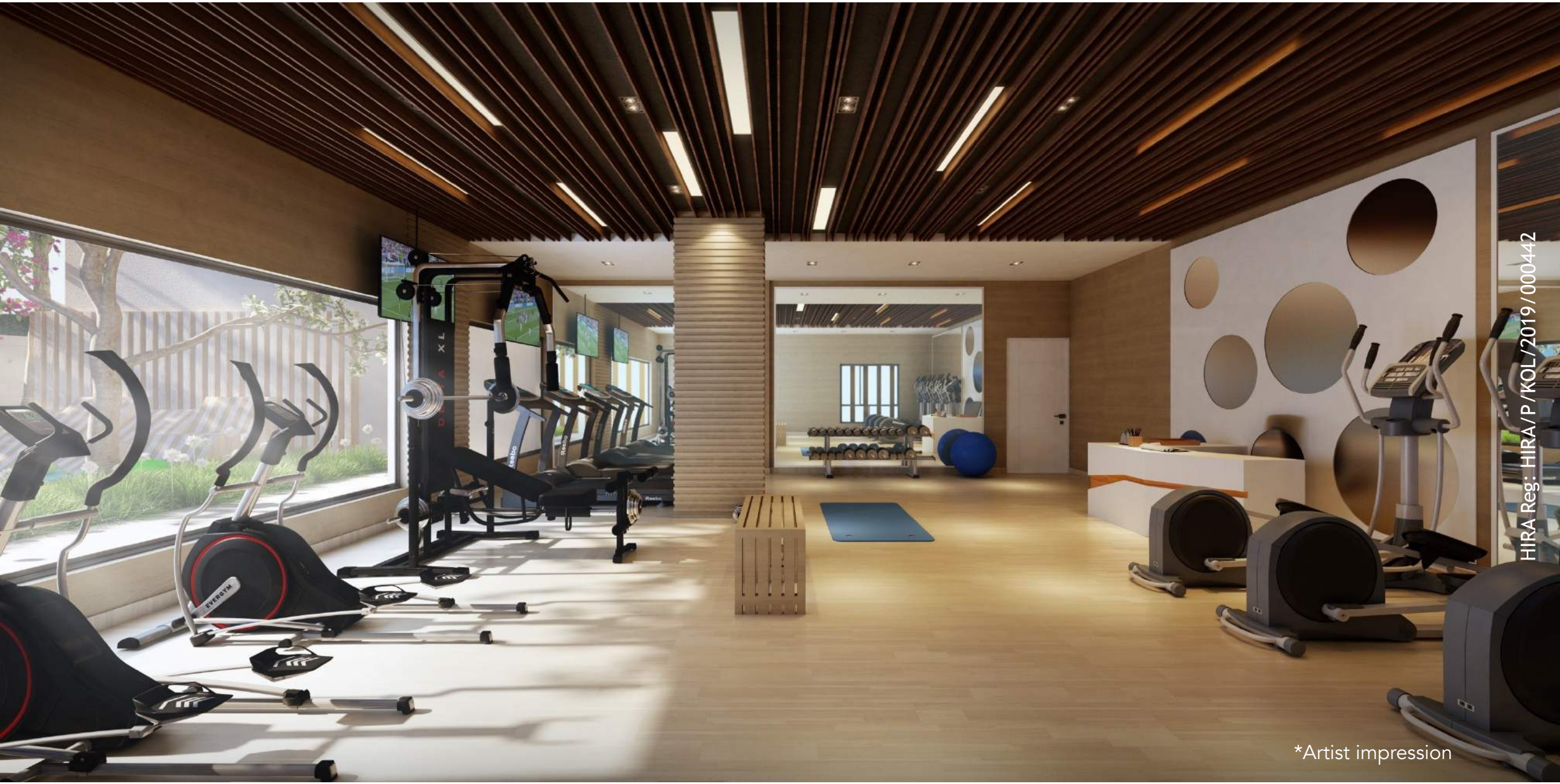


HIRA Reg: HIRA/P/KOL/2019/000442

\*Artist impression

# Infinity Edge Swimming Pool with Kids Pool





HIRA Reg: HIRA/P/KOL/2019/000442

\*Artist impression

# Multipurpose Gymnasium





HIRA Reg: HIRA/P/KOL/2019/000442

\*Artist impression

# Youth Sitting Zone





HIRA Reg: HIRA/P/KOL/2019/000442

\*Artist impression

AC Banquet Hall with party lawn





HIRA Reg: HIRA/P/KOL/2019/000442

\*Artist impression

# Cards Room





HIRA Reg: HIRA/P/KOL/2019/000442

\*Artist impression

# AC Indoor Games Room





HIRA Reg: HIRA/P/KOL/2019/000442

\*Artist impression

# Badminton Court





HIRA Reg: HIRA/P/KOL/2019/000442

\*Artist impression

# Open Amphitheatre





HIRA Reg: HIRA/P/KOL/2019/000442

\*Artist impression

# Senior Citizen Pavilion



# AMENITIES



## Capacious Club House including :

- AC Banquet Hall with lawn
- AC Indoor Games Room having TT, Carom, Board Games and Pool Table
- Crèche Area and Toddlers Zone
- Well equipped AC Gymnasium
- Infinity edge Swimming Pool with Kid's pool
- Pool Deck
- AC Cineplex
- AC Guest Rooms
- Party Lounge



## Landscaped Garden with:

- Outdoor Children's Play Area
- Badminton Court
- Mini Golf area
- Aroma Garden
- Pergolas and Gazebo
- Senior Citizen Pavilion
- Youth Sitting Zone
- Yoga Lawn with shading
- Outdoor fitness
- Amphitheatre



HIRA Reg: HIRA/P/KOL/2019/000442

  
**Natura**  
Inspired by nature

\*Artist impression



# AMENITIES



**Common Multipurpose Roof in each Block**



**Modern Fire Fighting System**



**Common Toilets for domestic help**



**24 Hours High End Smart Security Systems are in Place to ensure Safety of your loved ones, key features are:**

- Boom Barrier installed on the Main Gate for Smart Entry in the Complex with Smart Card kept in your car
- Pedestrian Control Gate
- State of Art IP Video Phone System for access control of unwanted entries to the Block



HIRA Reg: HIRA/P/KOL/2019/000442

\*Artist impression





# AMENITIES



## Other Facilities

- Arrival Courtyard
- Water Feature with Sculpture
- Paved Road / Drive Way
- Space for Visitors Car Parking
- 24 Hours Power Backup
- 24 Hours Filtered Ground Water Supply
- Facility Management Service office with storage area
- Cable Line Facility
- Intercom Facility
- Rain Water Harvesting System
- Emergency Assembly Area.
- Eco Friendly Garbage dispose off Facility.
- Up to 75% Solar Power System for common area



HIRA Reg: HIRA/P/KOL/2019/000442

  
**Natura**  
Inspired by nature

\*Artist impression



# SPECIFICATIONS

## Living Room / Dining Area

- **FLOORING** : Large Version of Vitrified Tiles
- **WALL** : POP Finish
- **CEILING** : POP Finish
- **MAIN DOOR** : Decorative Flush Doors with accessories
- **BALCONY** : Aluminium Sliding Door with full Glazing MS Railing
- **WINDOWS** : Powder Coated Aluminium with clear Glazing
- **ELECTRICAL**: Concealed Wiring with Modular Switches of reputed make,
- Provision for Telephone and Television points
- Provision for Split AC System including drainage pipe

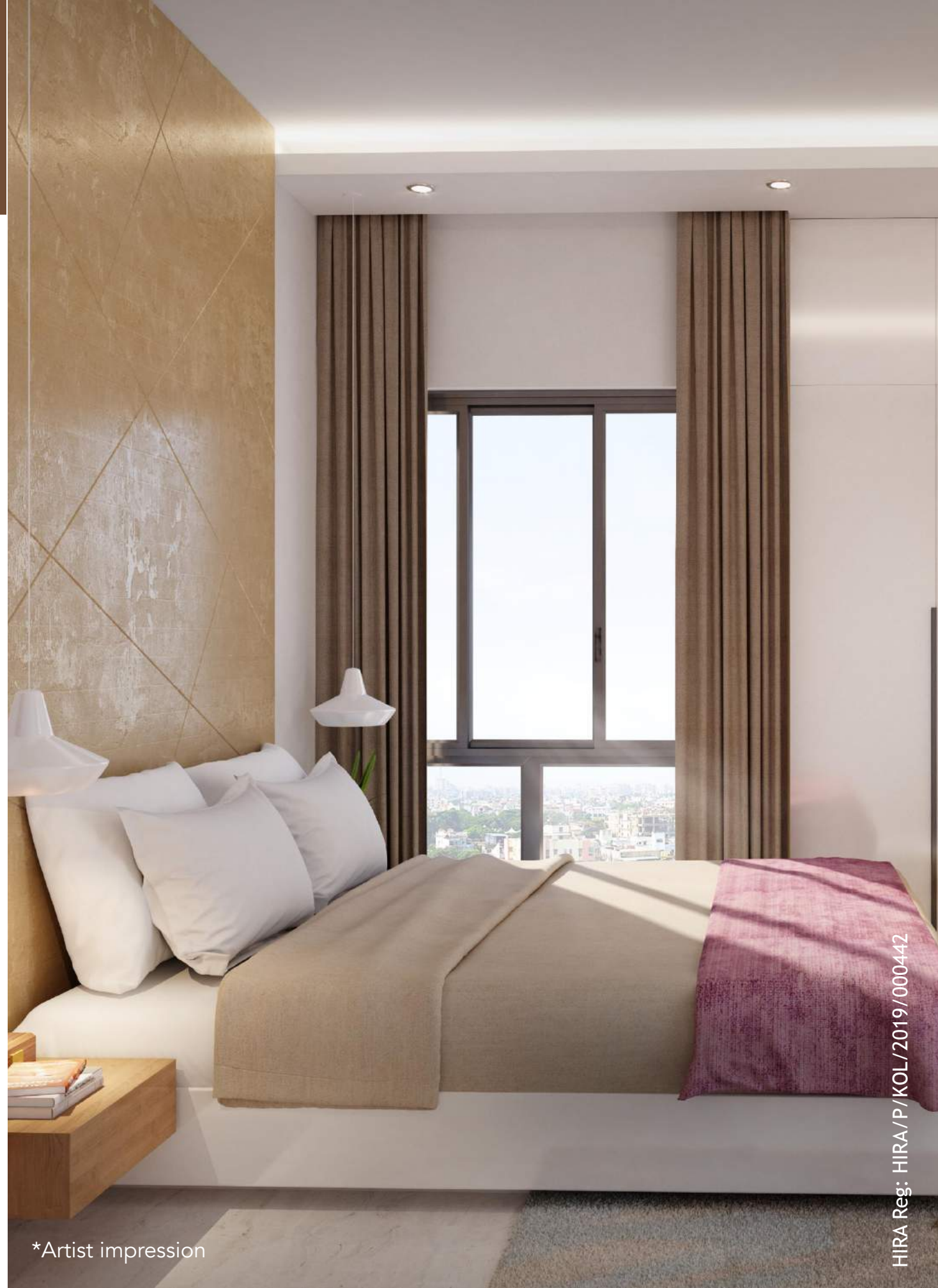




# SPECIFICATIONS

## Bedroom

- **FLOORING** : Vitrified Tiles
- **WALL** : POP Finish
- **CEILING** : POP Finish
- **DOOR** : Flush Door with enamel paint
- **WINDOWS** : Powder Coated Aluminium with clear Glazing
- **WARDROBE** : Provision for Wardrobe in bedrooms
- **ELECTRICAL** : Concealed Wiring with Modular Switches of reputed make.
- Provision for Telephone and Television points
- Provision for Split AC System including drainage pipe





# SPECIFICATIONS

## Kitchen

- **FLOORING** : Vitrified Tiles
- **WALL** : POP Finish, Wall Tiles upto 2 ft height on all around wall over Granite Counter
- **CEILING** : POP Finish
- **DOOR** : No Provision
- **WINDOWS** : Powder Coated Aluminium with clear Glazing
- **COUNTER** : Granite Slab with a stainless steel sink with drain board
- **ELECTRICAL** : Concealed Wiring with Modular Switches of reputed make, Water Filter point, Exhaust Fan point/ Chimney point
- **OTHERS** : Provision for outlets for Exhaust Fan / Chimney





# SPECIFICATIONS

## Toilet

- **FLOORING** : Ceramic Tiles
- **WALL** : Vitrified Tiles upto Door height
- **CEILING** : POP Finish
- **DOOR** : Flush Door with Enamel Paint
- **WINDOWS** : Powder Coated Aluminium with clear Glazing
- **SANITARY WARE** : Sanitary ware of Varmora or equivalent brand
- **CP FITTINGS** : Sleek C P Fittings from Jaquar or equivalent make
- **ELECTRICAL** : Concealed Wiring with Modular Switches of reputed make.
- Provision for light, geyser and exhaust points





# SPECIFICATIONS

## Lobby / Lifts / Roof

- **Roof:** Decorative Terrace
- **Lifts:** Automatic High Speed Elevators Of Reputed Make
- **Ground Floor Lobby:** Air-Conditioning , Flooring With Italian Marble, Wooden Panelling,
- **Reception And Seating Area ,** Elegant Lift Façade
- **Typical Floor Lobby:** Non Air-Conditioning, Flooring With Vitrified Tiles, Outdoor Finish: Weather Coat Paint.







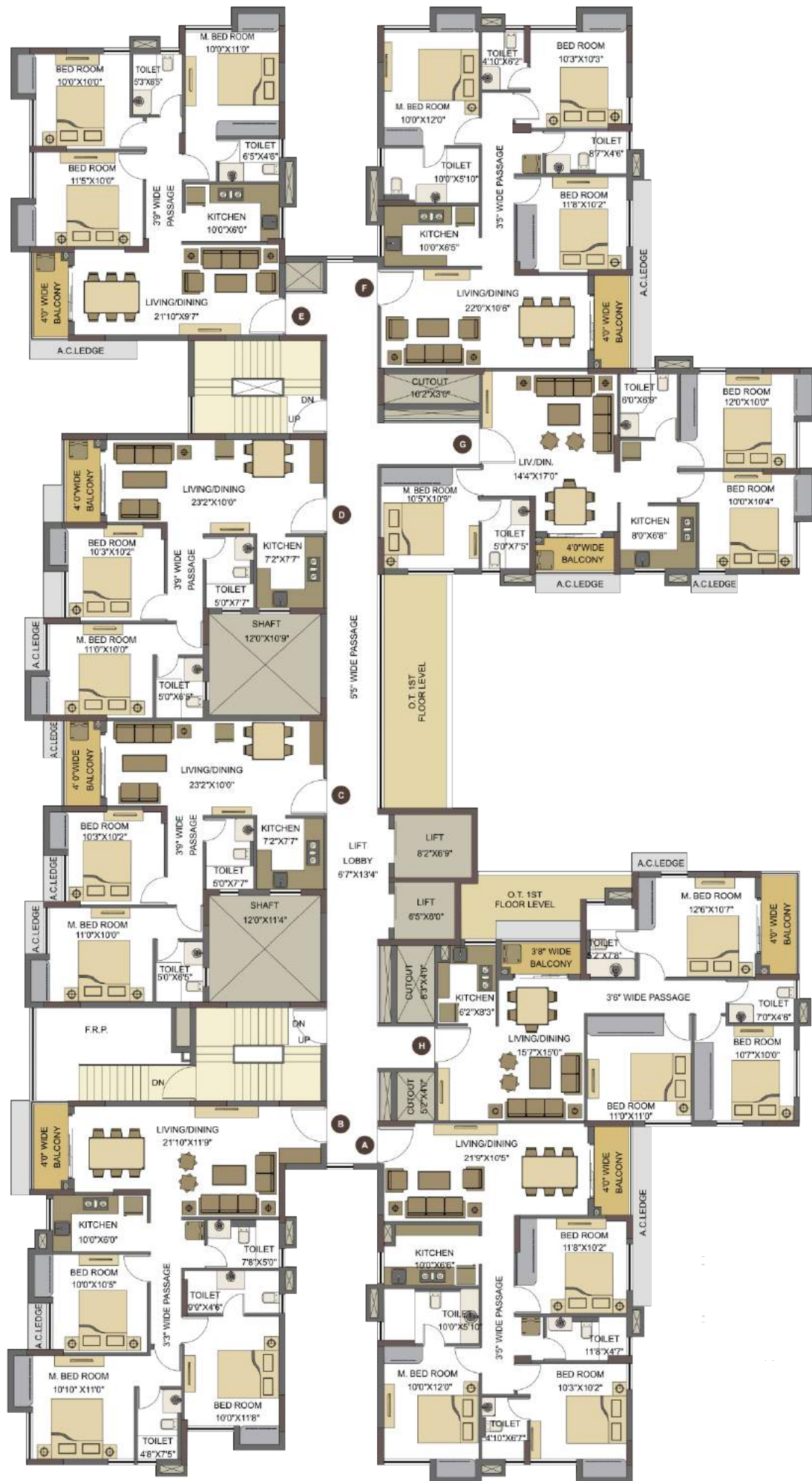






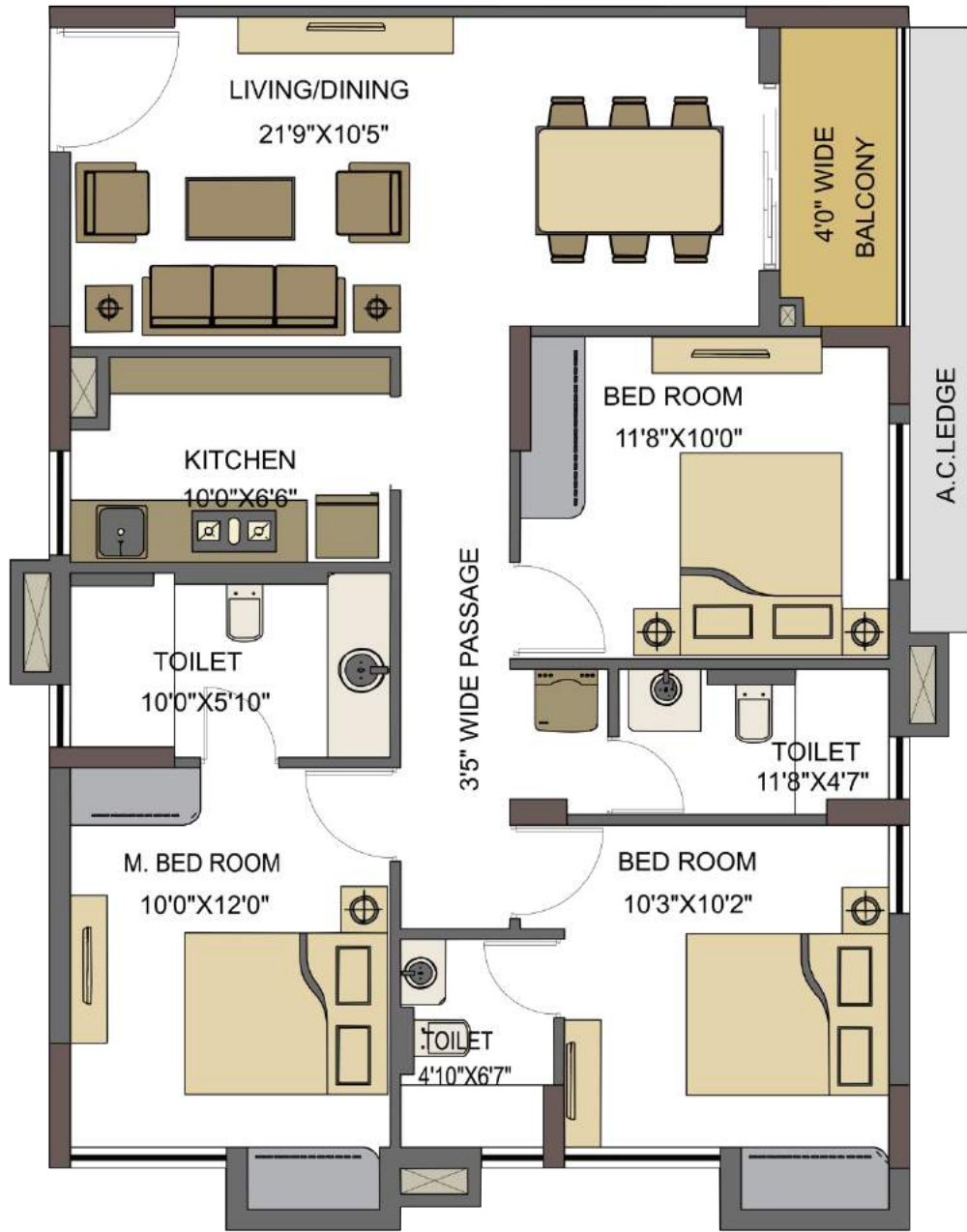






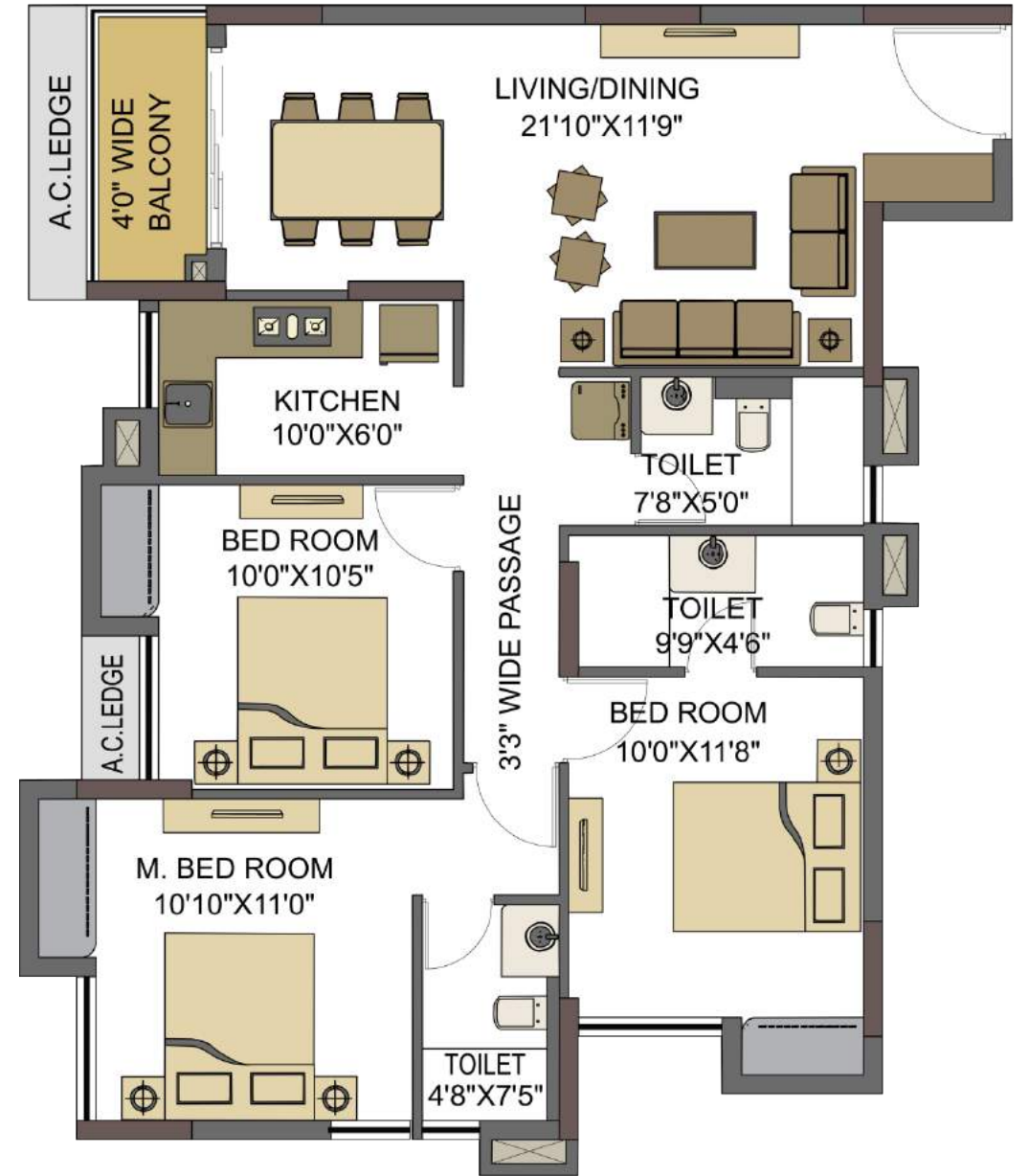
# Block B Wing 1 (7th to 10th Floor)





**Unit A**

**3 BHK**  
**1349 sqft**  
 1<sup>st</sup> floor to 10<sup>th</sup> Floor



**Unit B**

**3BHK**  
**1416 sqft**  
 1<sup>st</sup> floor to 10<sup>th</sup> Floor

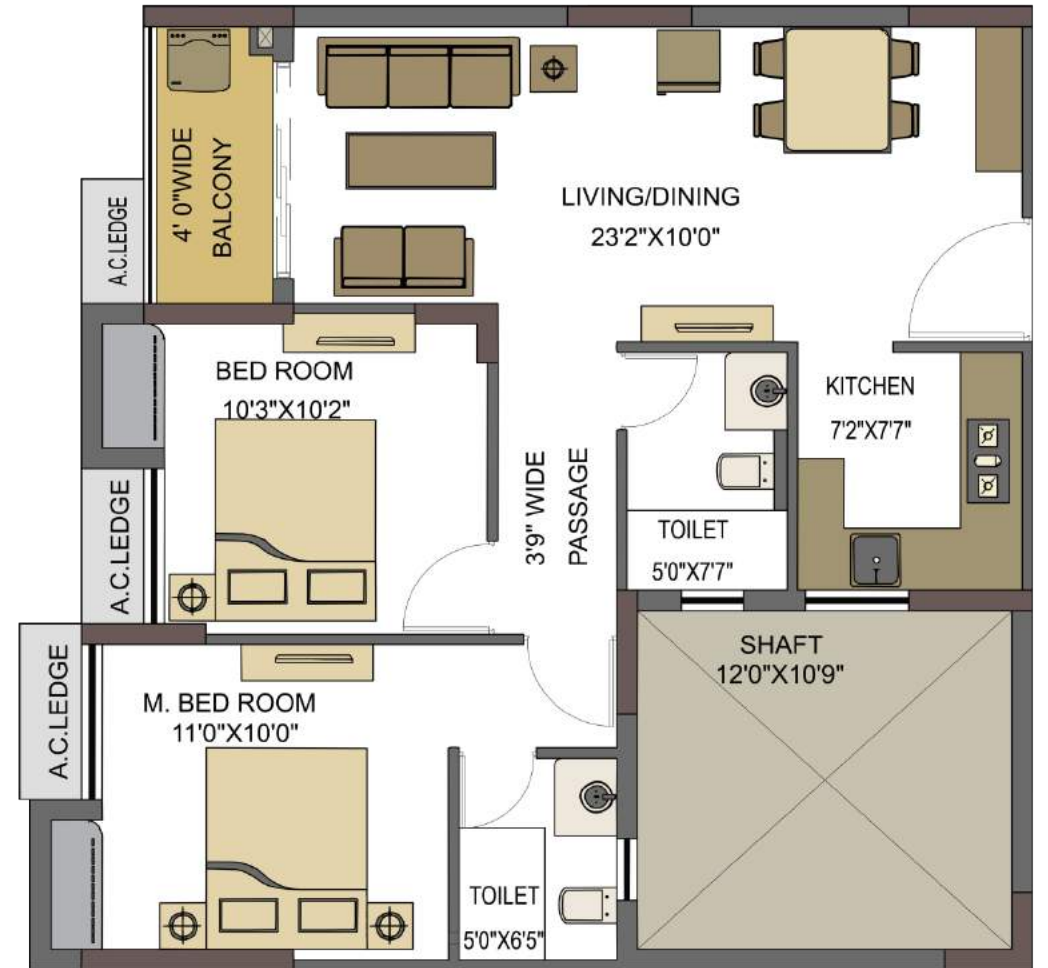




Unit C

2BHK

1019 sqft: 1<sup>st</sup> floor to 6<sup>th</sup> Floor  
 1021 sqft: 7<sup>th</sup> to 10<sup>th</sup> Floor

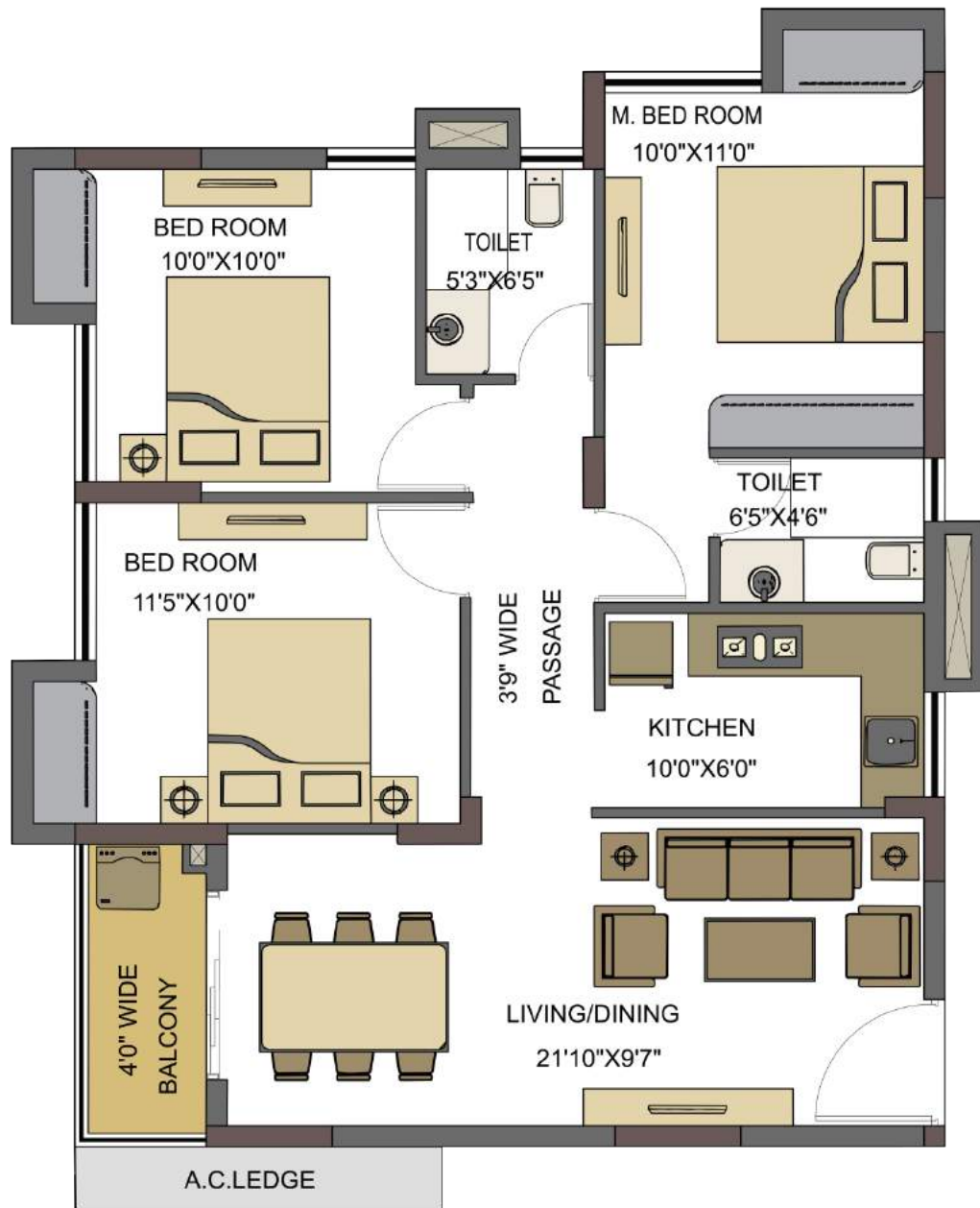


Unit D

2BHK

1010 sqft: 1<sup>st</sup> floor to 6<sup>th</sup> Floor  
 1013 sqft: 7<sup>th</sup> to 10<sup>th</sup> Floor

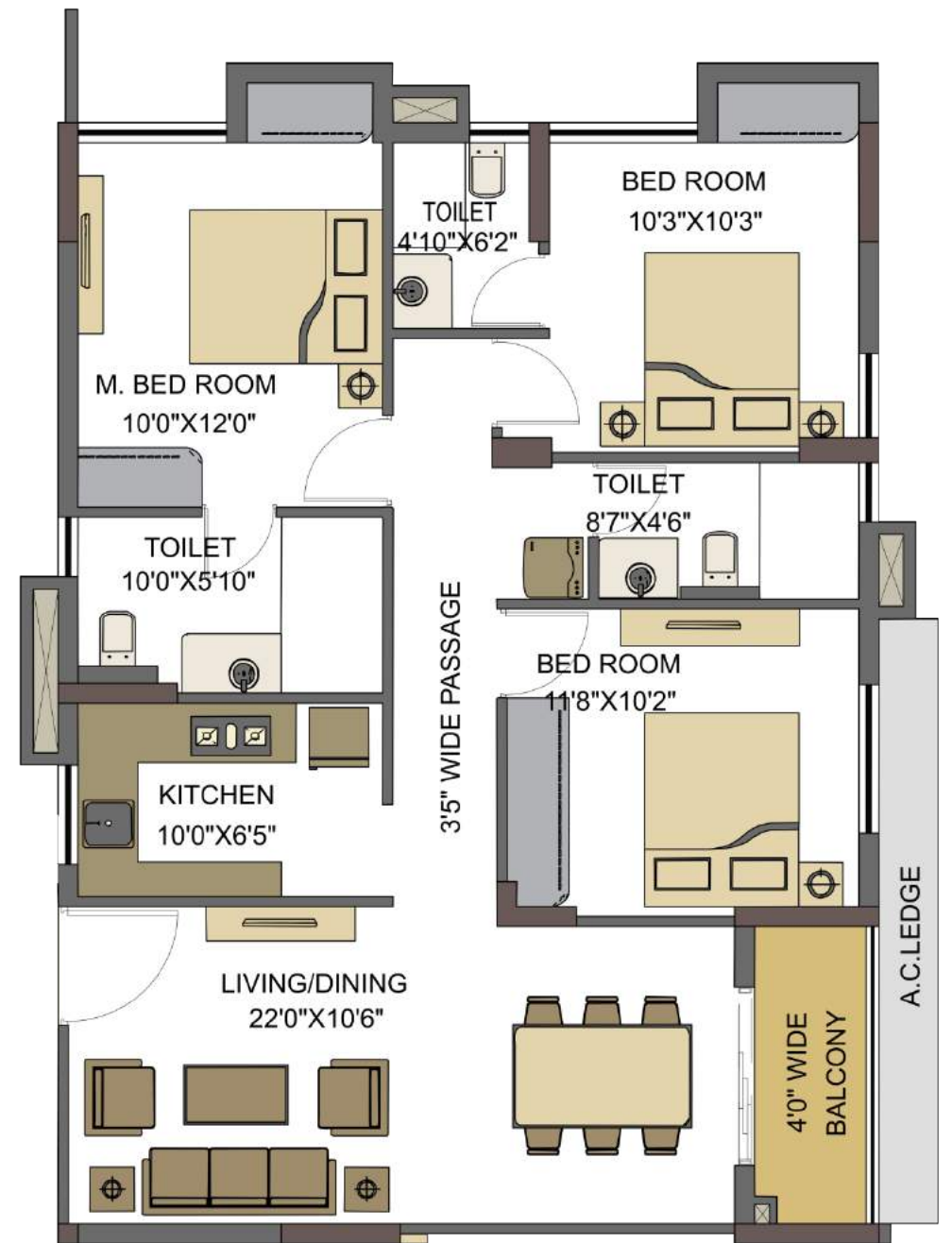




Unit E

3 BHK

1484 sqft: 1<sup>st</sup> floor  
 1212 sqft: 2<sup>nd</sup> to 10<sup>th</sup> Floor

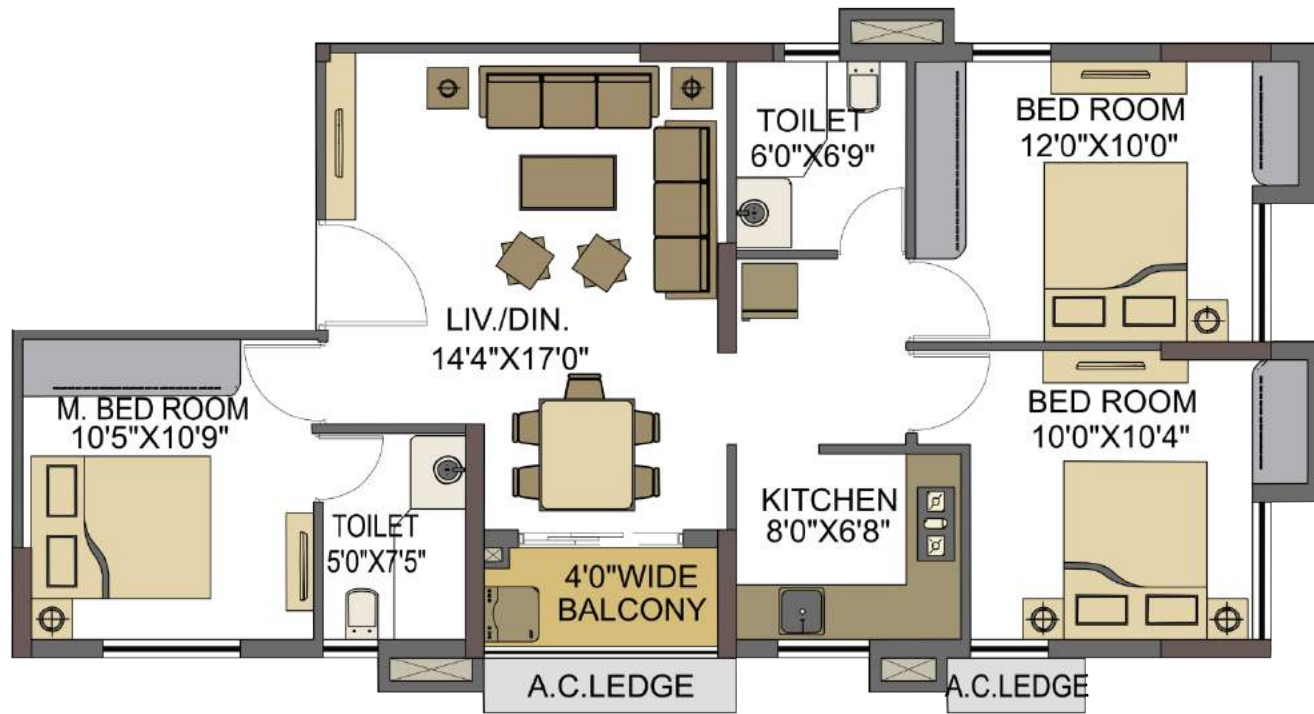


Unit F

3 BHK

1363 sqft  
 2<sup>nd</sup> floor to 10<sup>th</sup> floor

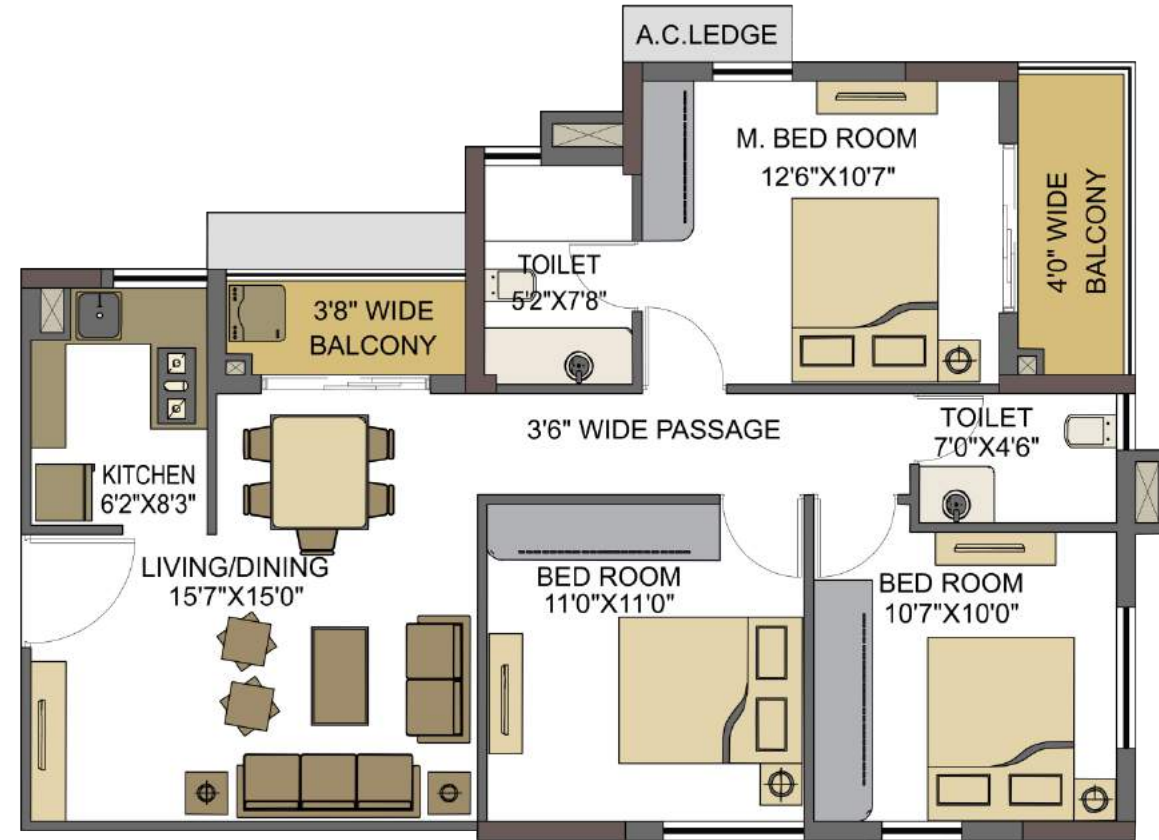




**Unit G**

**3 BHK**

**1192 sqft: 2<sup>nd</sup> to 6<sup>th</sup> floor**  
**1195 sqft: 7<sup>th</sup> to 10<sup>th</sup> floor**



**Unit H**

**3 BHK**

**1224 sqft: 1<sup>st</sup> to 10<sup>th</sup> floor**



## Area Chart - Block B- Wing 1

BLOCK NO	FLAT	Floor	Apartment Type	CARPET AREA (FLAT)		BALCONY / SERVENT ROOM AREA								TOTAL CARPET AREA (FLAT)		Flat BUA (A1)	S.Q BUA (A2)	Flat AREA (Total BUA) A1+A2=A	Final SBU AREA (Sq. FT.)	TERRACE AREA	Final Chargeable Area
				(WITHOUT BALCONY BUT INCLUDE C.B.AS PER HIRA)		BALCONY-1		BALCONY-2 / KITCHEN BAL.		SERVENT ROOM		TOTAL		(WITH BALCONY)						50% Chargeable Area	
				Sq.Mt.	Sq.Ft.	Sq.Mt.	Sq.Ft.	Sq.Mt.	Sq.Ft.	Sq.Mt.	Sq.Ft.	Sq.Mt.	Sq.Ft.	Sq.Mt.	Sq.Ft.					Sq.ft.	
BLOCK - B - WING 1	A	1ST FL	3 BHK	82.34	886.30776	3.49	37.57	0	0.00	0	0	3.49	37.57	85.83	923.87	1011.97	0.00	1011.97	1349	0.00	1349
	B	1ST FL	3 BHK	85.13	916.33932	3.51	37.78	0	0.00	0	0	3.51	37.78	88.64	954.12	1062.36	0.00	1062.36	1416	0.00	1416
	C	1ST FL	2 BHK	60.03	646.16292	3.33	35.84	0	0.00	0	0	3.33	35.84	63.36	682.01	764.24	0.00	764.24	1019	0.00	1019
	D	1ST FL	2 BHK	59.49	640.35036	3.24	34.88	0	0.00	0	0	3.24	34.88	62.73	675.23	757.64	0.00	757.64	1010	0.00	1010
	E	1ST FL	3 BHK	72.31	778.34484	3.51	37.78	0	0.00	0	0	3.51	37.78	75.82	816.13	909.08	0.00	909.08	1212	272.00	1484
	H	1ST FL	3 BHK	70.60	759.9384	2.77	29.82	4.05	43.59	0	0	6.82	73.41	77.42	833.35	917.72	0.00	917.72	1224	0.00	1224
	A	2ND.-6TH	3 BHK	82.34	886.30776	3.49	37.57	0	0.00	0	0	3.49	37.57	85.83	923.87	1011.97	0.00	1011.97	1349	0.00	1349
	B	2ND.-6TH	3 BHK	85.13	916.33932	3.51	37.78	0	0.00	0	0	3.51	37.78	88.64	954.12	1062.36	0.00	1062.36	1416	0.00	1416
	C	2ND.-6TH	2 BHK	60.03	646.16292	3.33	35.84	0	0.00	0	0	3.33	35.84	63.36	682.01	764.24	0.00	764.24	1019	0.00	1019
	D	2ND.-6TH	2 BHK	59.49	640.35036	3.24	34.88	0	0.00	0	0	3.24	34.88	62.73	675.23	757.64	0.00	757.64	1010	0.00	1010
	E	2ND.-6TH	3 BHK	72.31	778.34484	3.51	37.78	0	0.00	0	0	3.51	37.78	75.82	816.13	909.08	0.00	909.08	1212	0.00	1212
	F	2ND.-6TH	3 BHK	83.10	894.4884	3.64	39.18	0	0.00	0	0	3.64	39.18	86.74	933.67	1022.08	0.00	1022.08	1363	0.00	1363
	G	2ND.-6TH	3 BHK	71.66	771.34824	2.96	31.86	0	0.00	0	0	2.96	31.86	74.62	803.21	894.03	0.00	894.03	1192	0.00	1192
	H	2ND.-6TH	3 BHK	70.60	759.9384	2.77	29.82	4.05	43.59	0	0	6.82	73.41	77.42	833.35	917.72	0.00	917.72	1224	0.00	1224
	A	7TH.-10TH	3 BHK	82.34	886.30776	3.49	37.57	0	0.00	0	0	3.49	37.57	85.83	923.87	1011.97	0.00	1011.97	1349	0.00	1349
	B	7TH.-10TH	3 BHK	85.13	916.33932	3.51	37.78	0	0.00	0	0	3.51	37.78	88.64	954.12	1062.36	0.00	1062.36	1416	0.00	1416
	C	7TH.-10TH	2 BHK	60.17	647.66988	3.33	35.84	0	0.00	0	0	3.33	35.84	63.5	683.51	766.12	0.00	766.12	1021	0.00	1021
	D	7TH.-10TH	2 BHK	59.61	641.64204	3.24	34.88	0	0.00	0	0	3.24	34.88	62.85	676.52	759.41	0.00	759.41	1013	0.00	1013
	E	7TH.-10TH	3 BHK	72.31	778.34484	3.51	37.78	0	0.00	0	0	3.51	37.78	75.82	816.13	909.08	0.00	909.08	1212	0.00	1212
	F	7TH.-10TH	3 BHK	83.10	894.4884	3.64	39.18	0	0.00	0	0	3.64	39.18	86.74	933.67	1022.08	0.00	1022.08	1363	0.00	1363
G	7TH.-10TH	3 BHK	71.79	772.74756	2.96	31.86	0	0.00	0	0	2.96	31.86	74.75	804.61	895.92	0.00	895.92	1195	0.00	1195	
H	7TH.-10TH	3 BHK	70.6	759.9384	2.77	29.82	4.05	43.59	0	0	6.82	73.41	77.42	833.35	917.72	0.00	917.72	1224	0.00	1224	





# Natura

Inspired by nature

Developer

**srijan**<sup>®</sup>

Building Tomorrows

**SHAH GROUP**

Land Owner