



3, 3.5 & 4 BHK SKY LIVING



Top Class Amenities  
Club Class

*Living*



3, 3.5 & 4 BHK SKY LIVING



AMENITIES | ACCESSIBILITY  
AFFORDABILITY



Welcome to a  
*new class*  
of Luxury Living



3, 3.5 & 4 BHK SKY LIVING

One of the most distinguished players  
in the Real Estate field create a new  
Benchmark in Ultramodern Residential  
Apartments... at REALISTIC PRICES !

**Shivam Builders Pvt. Ltd.** presents a  
unique Community Living for like minded  
people with its **3, 3.5 & 4 BHK**  
Ultramodern Club Class Apartments  
advocating Sky Living.

Call it an Apartment, Home, Personal  
Retreat or a New Milestone of Life.  
Designed on a plush scale, **RAJVI OPAL**  
integrates an Extremely Contemporary  
Design with some never before Features  
& Amenities in its genre.

**RAJVI OPAL** is a manifestation of  
accommodating Urban Lifestyles coupled  
with Architectural Adroitness.

This unique venture shall be one of the  
most epic examples of how One plus One  
can be a lot more than just Two.







Add Colors to Your  
*new Life*



Roof Top  
Garden



Swimming Pool



Fully Equipped  
Party Area



Table Tennis &  
Board Games



Gym with High-end  
Equipments



Jogging Track



Ultra Modern  
Home Theatre



Kids Gaming Zone



Yoga &  
Meditation Room



Library



Jacuzzi, Steam  
and Sauna



Indoor / Outdoor  
Children Play Area



Vastu Based  
Planning



Vehicle  
Free Zone



Billiards Room



Mobile App for  
Service Support



Video Door Phone  
& Intercom



Senior Citizen  
Seating & Gazebo





Experience  
the Vivid Joys of a  
*Luxurious Lifestyle*





## GROUND FLOOR PLAN



## FIRST FLOOR PLAN





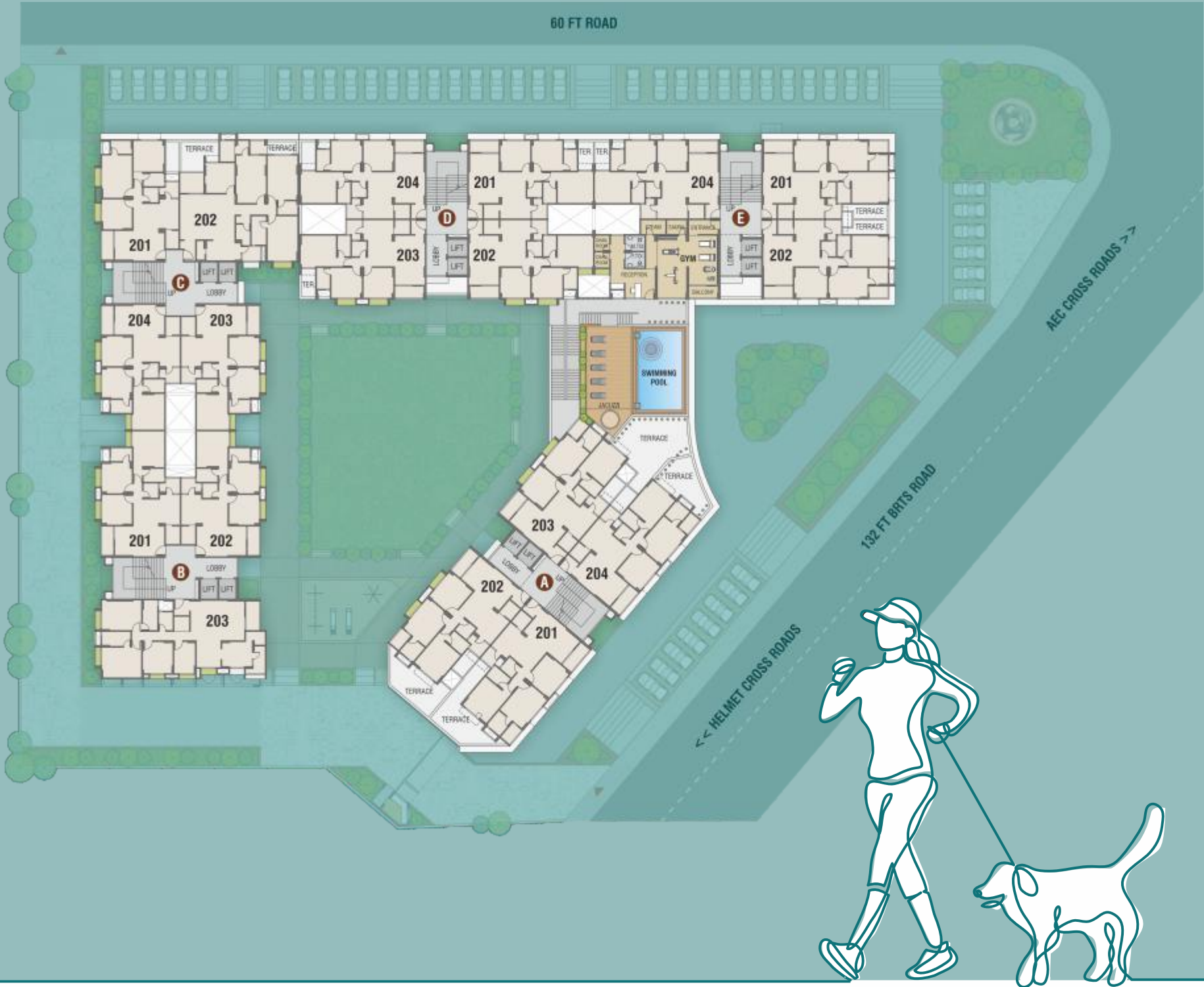
SECOND  
FLOOR PLAN

TYPICAL  
FLOOR PLAN

Code	Type	Block	Carpet (Sq. Ft.)	SBA (Sq. Ft.)
1A		D - 1, 2, 3, 4 & E - 3, 4	917	1611
1B		B - 1, 2 & C - 3, 4	899	1575
1C		C - 1	913	1602

Code	Type	Block	Carpet (Sq. Ft.)	SBA (Sq. Ft.)
2A		A - 1, 2, 3, 4 & E - 1, 2	987	1728
2B		B - 3	1254	2196
2C		C - 2	1359	2376

3 BHK: Type 1A, 1B, 1C & 2A • 3.5 BHK: Type 2B • 4 BHK: Type 2C







3, 3.5 & 4 BHK SKY LIVING

A Grand New  
*Sky Life*  
Awaits You



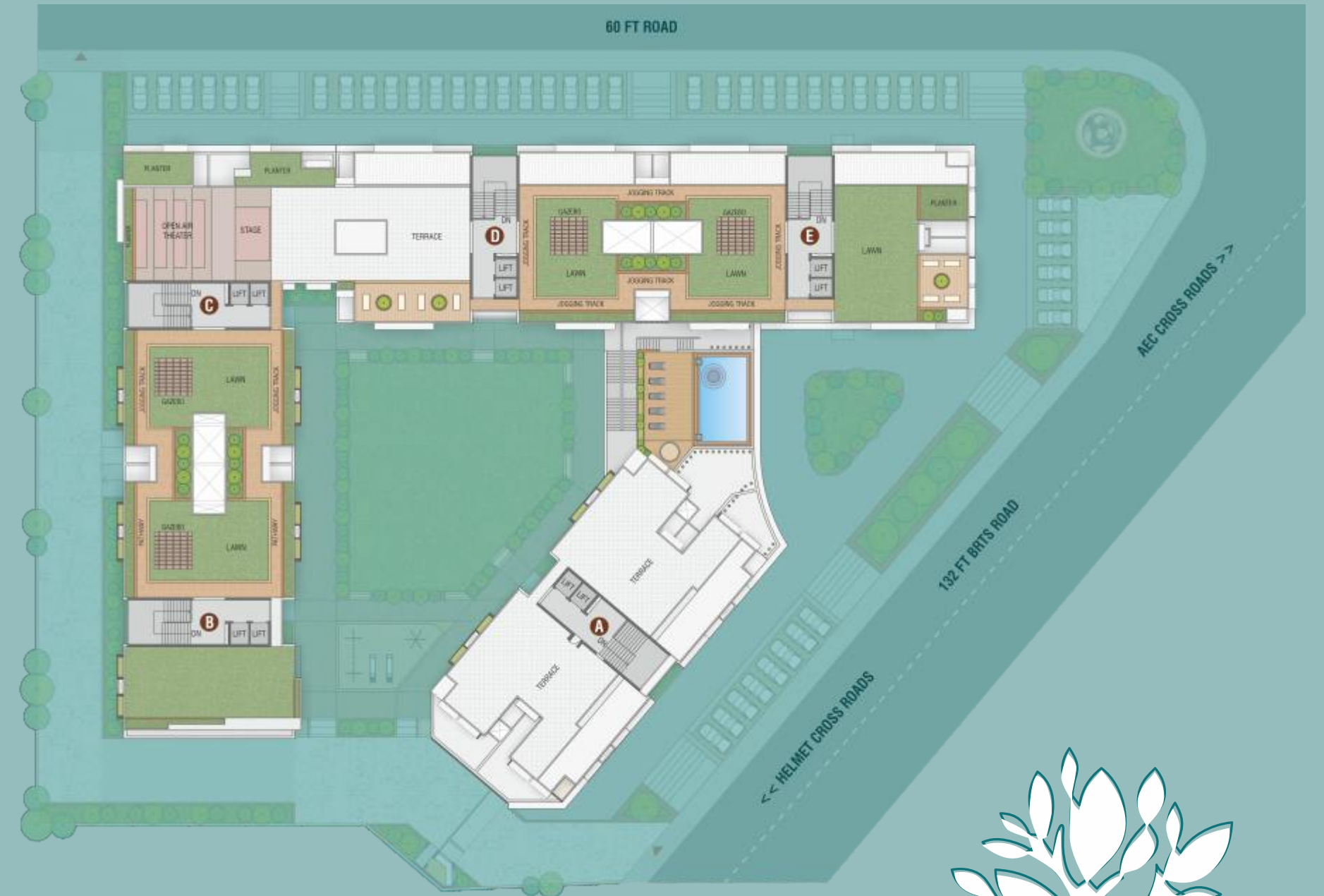


# TOP FLOOR PLAN

13TH FLOOR



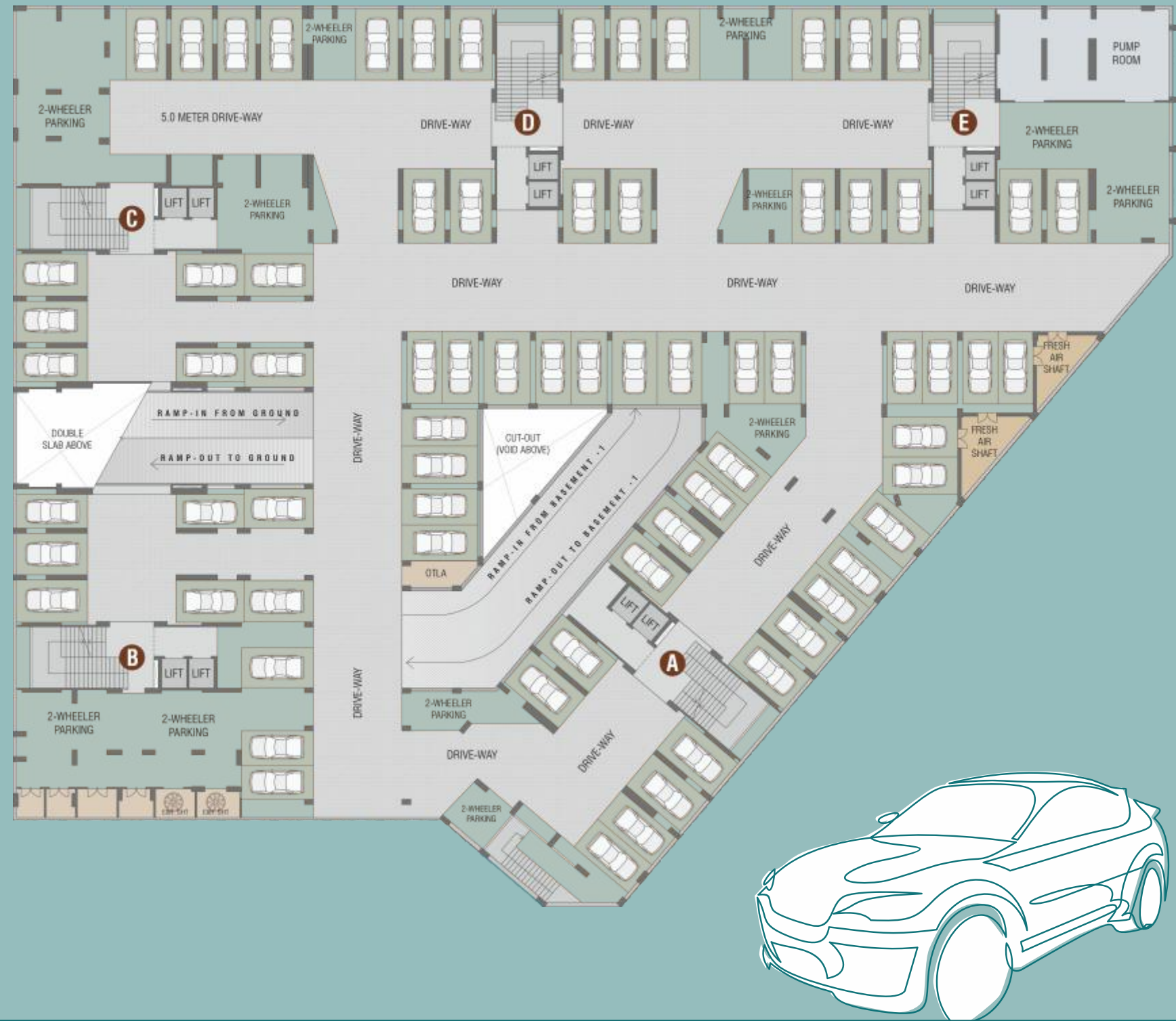
# TERRACE GARDEN PLAN





## BASEMENT 1, 2 & 3 FLOOR PLAN

Three Levels of Basement with  
Double Stack Parking and  
A Capacity of 450+ Cars.

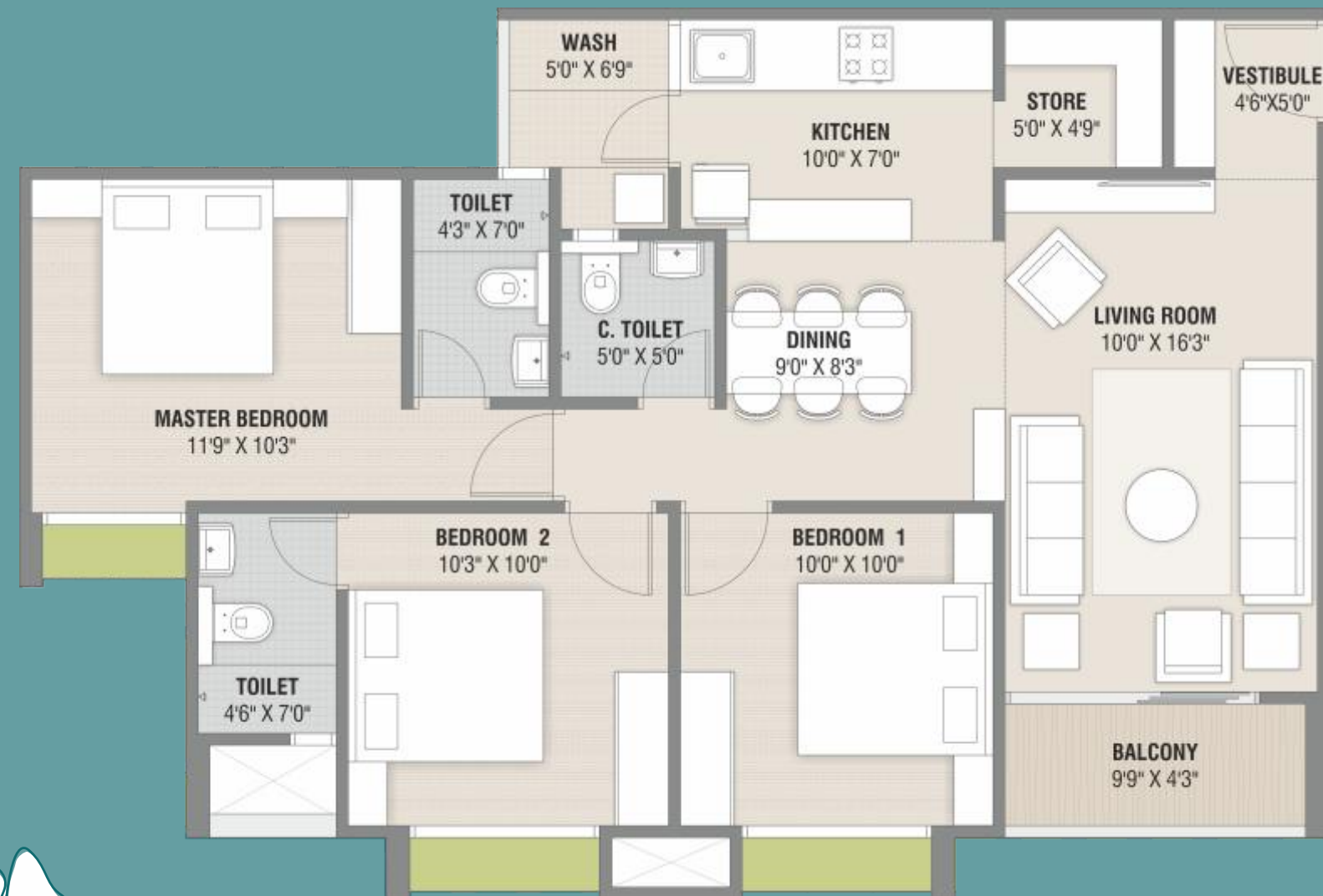


Advance Your *Lifestyle*  
with Easy Connectivity to  
Each Amenity



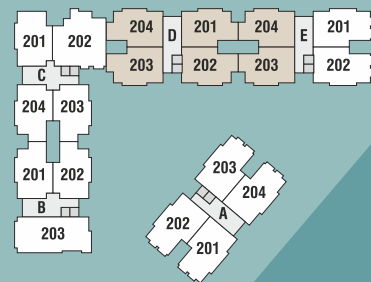


## 3 BHK - TYPE 1A

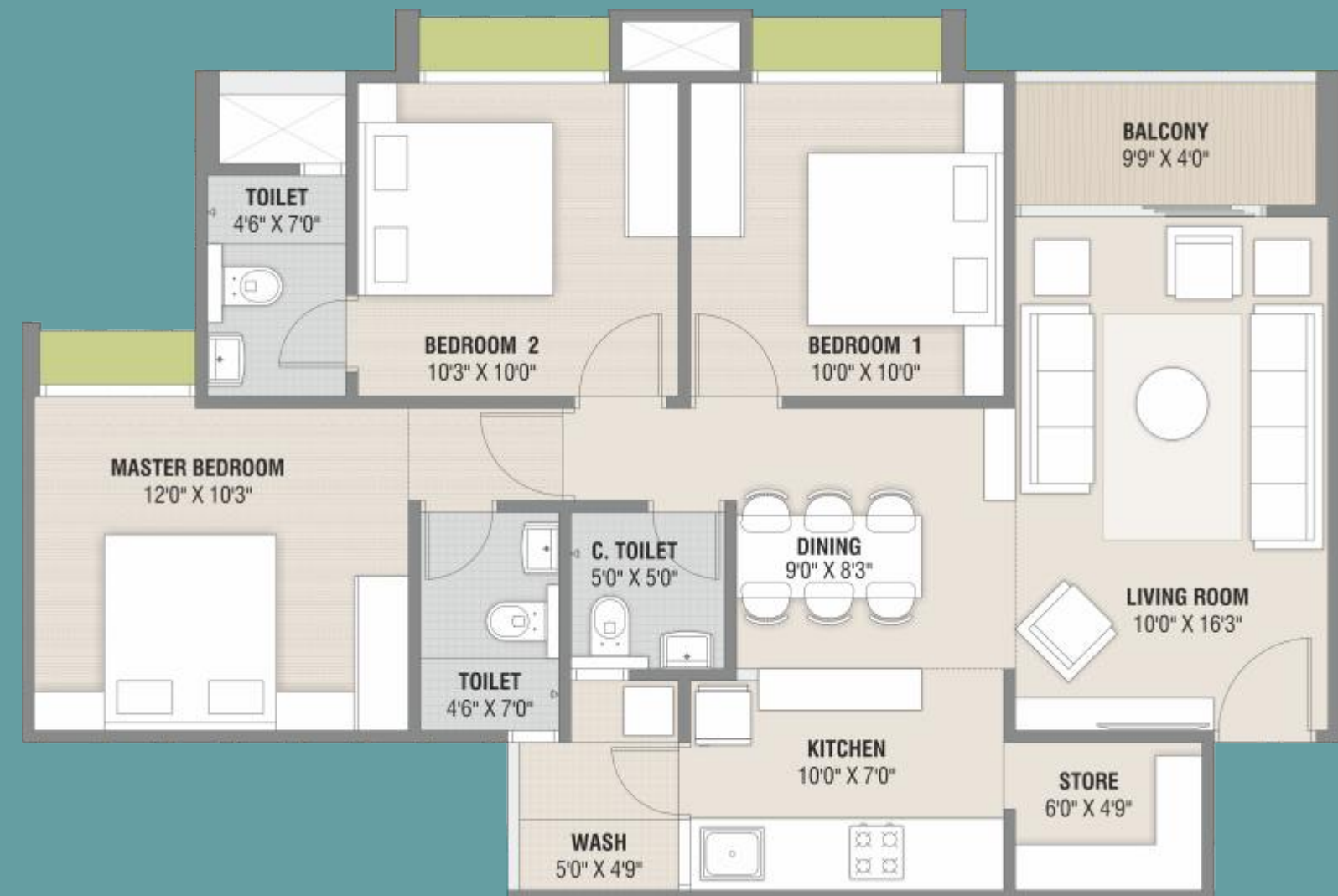


917 Sq. Ft. (Carpet)  
1611 Sq. Ft. (SBA)

Block: D - 1, 2, 3, 4  
Block: E - 3, 4

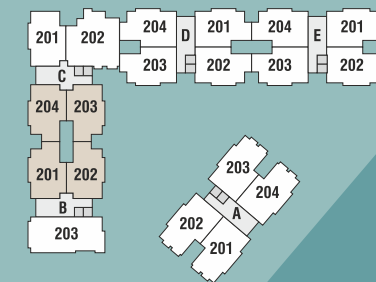


## 3 BHK - TYPE 1B



899 Sq. Ft. (Carpet)  
1575 Sq. Ft. (SBA)

Block: B - 1, 2  
Block: C - 3, 4





## 3 BHK - TYPE 1C



913 Sq. Ft. (Carpet)  
1602 Sq. Ft. (SBA)

Block: C - 1

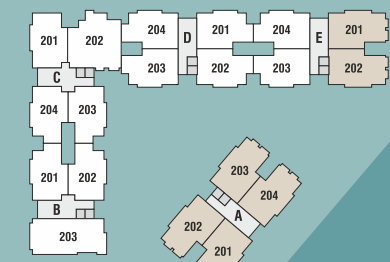


## 3 BHK - TYPE 2A



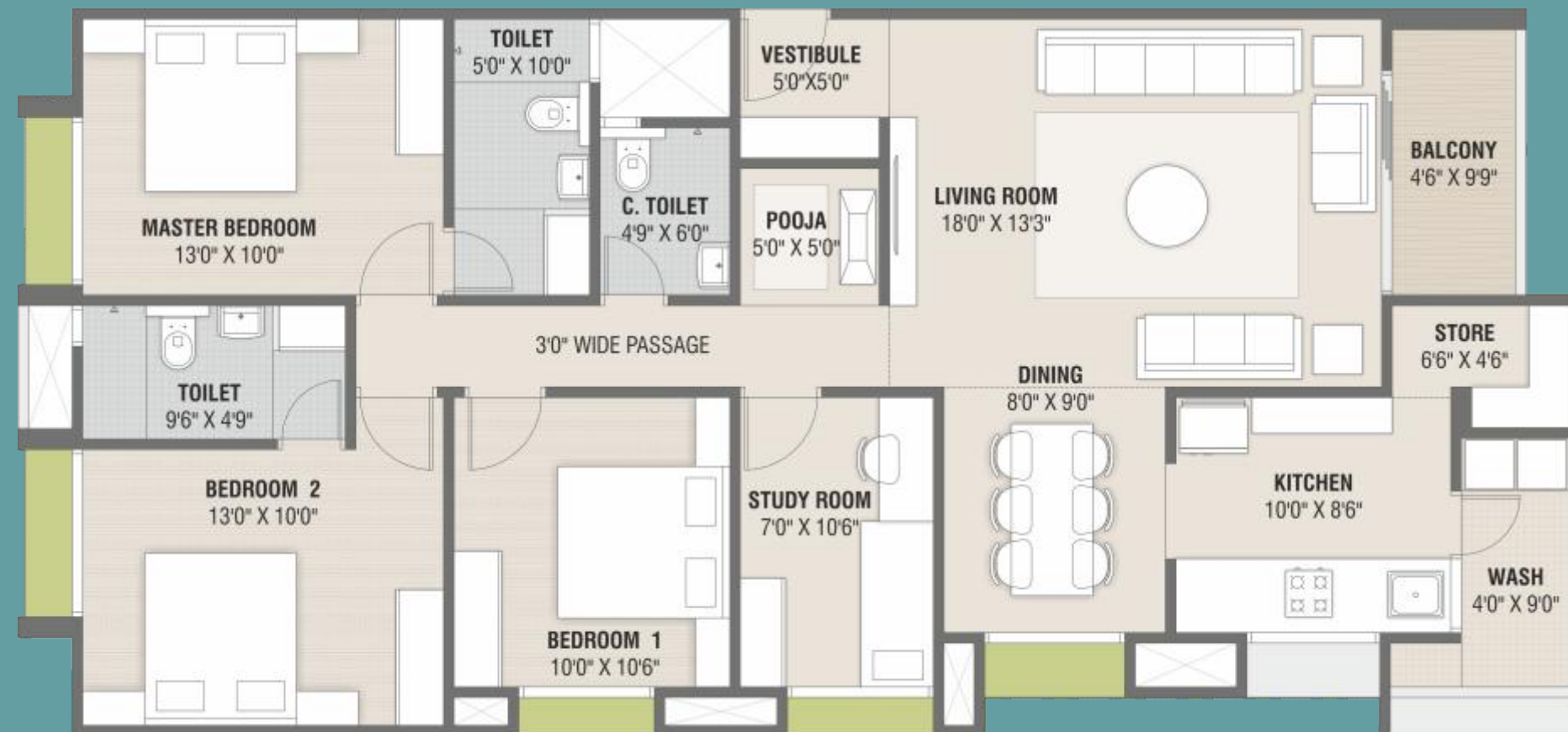
987 Sq. Ft. (Carpet)  
1728 Sq. Ft. (SBA)

Block: A - 1, 2, 3, 4  
Block: E - 1, 2

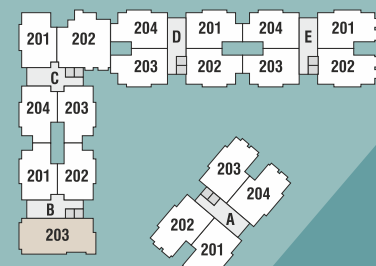




## 3.5 BHK BLOCK B-3



1254 Sq. Ft. (Carpet)  
2196 Sq. Ft. (SBA)



## 4 BHK BLOCK C-2

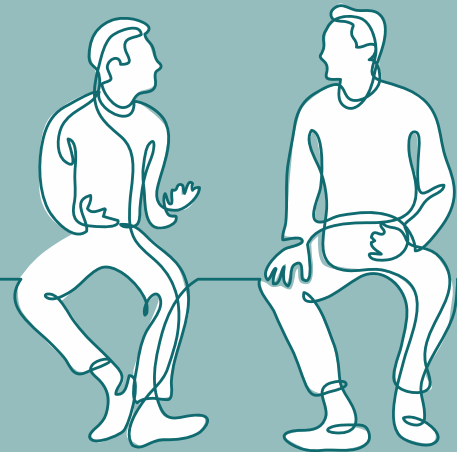


1359 Sq. Ft. (Carpet)  
2376 Sq. Ft. (SBA)





Built with  
*Features*  
You'll fall in love with

**FLOORING**

Vitrified Tiles in Drawing, Dining, Kitchen & Bedrooms.

**TOILET & PLUMBING**

Ceramic Glazed Tiles upto Lintel Level. Premium Plumbing Fittings and Accessories.

**DOORS**

Flush Doors with S.S. Fittings and Paint. Main Door - Polished Natural Veneer / Laminate.

**SECURITY SYSTEM**

24 X 7 recruited Security Staff within the Campus & Intercom Facilities.

**WINDOWS**

Sliding Epoxy / Powder Coated Aluminium Section Windows with Mosquito Protective Net.

**ELEVATORS**

Automatic Elevators of a Reputed Brand.

**KITCHEN**

Granite Platform with Designer Glazed Tiles upto Lintel Level and S.S. Sink.

**PARKING**

Car and Two Wheeler Parking in Basement & Ground Level.

**ELECTRIFICATION**

3 Phase concealed ISI Copper Wiring with Standard Quality Switches.

**STRUCTURE**

Structural Design for Seismic Conditions as per Regulations and Codes.

**WALL FINISH**

Internal Plaster with Putty Finish. External Double Coat Plaster / Texture with Acrylic Paint.

**SPECIAL FEATURES**

Large Window Size for Better Air Ventilation. Spacious Area Planning that suits Modern Interior Concepts.



**Shivam  
Builders**  
Pvt. Ltd.  
Since 1989  
ISO 9001:2008

## Spectacular Shivam

Seeded in 1989 as a real estate development company in Gujarat; Shivam Builders has been a remarkable epitome of quality, customer centric approach, robust engineering, uncompromising business ethics, timeless values and transparency in all spheres of business conduct.

Shivam Builders have come a long way, building an incredible volume of properties which is a reflection of their deep passion, trust, commitment and expertise. Set ashore towards the horizon of prosperity, Shivam Builders' exclusive trail of success shot off by the name 'Rajvi'. Today, Rajvi has flourished into a synonym for 360 degree solutions in real estate. The saga of magnificent residential & commercial projects includes Rajvi Complex, Rajvi Towers, Rajvi Pearl, Rajvi Aurum & many more.

The visionary leadership of Mr. Shailesh Patel (Chairman) & Mr. Kinjal Patel (Managing Director) has enabled Shivam Builders in making it one of the most preferred names in the real estate sector, all over Gujarat.



RAJVI ARCADE



RAJVI SAPPHIRE



RAJ PLAZA



RAJVI OASIS



RAJVI EMERALD



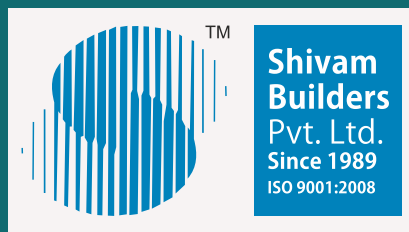
RAJVI GARNET





**SITE: HELMET CIRCLE to AEC BRIDGE, 132 FT. BRTS ROAD, NARANPURA ☎ 9913 0000 93**

**An Initiative by**



A Project by: **SHIVAM PRERNA INFRABUILD**  
 8<sup>th</sup> Floor, Rajvi Arcade, Opp. Gurukul,  
 Drive-In Road, Memnagar, Ahmedabad - 380 052  
 079 2747 9453/54 | [info@shivambuilders.in](mailto:info@shivambuilders.in)  
[www.shivambuilders.in](http://www.shivambuilders.in)

Architect:



Structural Consultant:



Member of:



PR/GJ/AHMEDABAD/AHMEDABAD CITY/AUDA/MAA00403/A1M/151019 • [www.gujrera.gujarat.gov.in](http://www.gujrera.gujarat.gov.in)