



ARTISTIC IMAGE

## UNDER HARYANA AFFORDABLE HOUSING POLICY

### COST SHEET

Category (Type)	No. of Units	Carpet Area sq. ft. (approx)	Balcony Area sq. ft. (approx)	Allotment Rate of Apartment (all inclusive)*	With Application Booking Amount 5%	On Allotment 20%
2BHK TYPE -01	264	585.174	87.511	23,84,452	1,19,223	4,76,890
2BHK TYPE-02	474	594.517	84.928	24,20,532	1,21,027	4,84,106
2BHK TYPE-03	240	585.562	87.511	23,86,004	1,19,300	4,77,201
2BHK TYPE-04	30	595.637	84.928	24,25,012	1,21,251	4,85,002

**PAYMENT TERMS:** (I) WITH APPLICATION: BOOKING AMOUNT, I.E., 5% OF COST OF FLAT (II) 20% OF COST OF FLAT ON ALLOTMENT (III) BALANCE 75% OF THE AMOUNT IN SIX EQUATED 6 MONTHLY INSTALMENTS SPANNING OVER A PERIOD OF THREE YEARS.



AN ISO 9001:2015;  
14001:2015 ; 45001:2018  
CERTIFIED COMPANY

STERNAL BUILDCON PRIVATE LIMITED | CIN: U70109DL2009PTC195052

Reg. Office: 13th Floor, Dr. Gopal Das Bhawan, 28 Barakhamba Road New, Connaught Place, New Delhi 110001  
Corp. Office: Ground Floor, Tower A, Signature Tower, South City -1, Gurugram, Haryana-122001 | [www.signatureglobal.in](http://www.signatureglobal.in)

HOME LOAN PARTNERS:



**AVAIL INTEREST SUBSIDY BENEFITS OF RS. 2.67 LACS (APPROX) UNDER PMAY (PRADHAN MANTRI AWAAS YOJANA)\*\***



Disclaimer: Promoter urges every applicant to inspect the project site and shall not merely rely upon or to be influenced by any architectural impression, plan or sales brochure and, therefore, requested to make personal judgment prior to submitting an application for allotment. The Project is being developed in phases, hence, certain facilities/amenities etc., may be used by allottee of other phases. Unless otherwise stated, all the images, visuals, materials and information contained herein are purely creative/artistic and may not be actual representations of the product and/or any amenities. Further, the actual design may vary in the fit and finished form, from the one displayed above. Project details / specifications can also be accessed at the office of Haryana Real Estate Regulatory Authority website <https://haryanarea.gov.in/>. Journey time shown, if any, is based upon Google Maps which may vary as per the traffic at a relevant point of time.. \*Rate mentioned above does not include GST and other statutory charges, if applicable. T & C Apply. 1 sq. mt. = 10.7639 sq. ft. \*\*The subsidy differs as per the eligibility of the client's profile and the loan amount. This is the maximum amount of subsidy that a client can receive and the same goes with the loan amount too, for availing the subsidy. Please note that the loan can be sanctioned for more than 12 lakhs but the subsidy can be availed only till 12 lakhs of the loan amount.

HRERA REG. NO.: 42 OF 2020 DATED 09.11.2020

LICENSE NO.: 21 OF 2020 DATED 13.08.2020

**7053-121-121**



AN ISO 9001:2015, 14001:2015, 45001:2018 CERTIFIED COMPANY



# SUPERB CONNECTIVITY SUPERIOR HOMES



2BHK @  
**₹23.85**#  
LAKHS

#Price of 2BHK- TYPE 01.  
Carpet Area : 585.174 sq. ft., Balcony Area : 87.511 sq. ft.

## ABOUT US

Signature Global is India's No. 1 Affordable Housing company\*. Our mission is to provide "Har Parivar Ek Ghar," because we believe in the philosophy "Kyunki Apna Ghar Toh Apna Hi Hota Hai." With an endeavour to redefine the current conventions of Indian real estate development, we are championing excellence in craftsmanship, planning and service. So, we are certified in ISO 9001:2015; 14001:2015; and 45001:2018, delivering the best quality before the promised time. What's more, we have introduced the highly advanced global green building certification IGBC, which provides a solution to capitalize on the value of green buildings by promoting benefits to customers while protecting the environment.

The company has successfully launched 23 Affordable Housing projects, all in prime locations, which include Gurugram, Sohna and Karnal in Haryana. We have successfully delivered Solera, Synera and Andour Heights in Gurugram and offered the possession of Sunrise in Karnal, months before the expected time of delivery. Our success story also includes a commercial mall, focusing on the interests of customers in Vaishali, Ghaziabad, Uttar Pradesh.

\*Signature Global is developing the highest number of projects amongst private developers under any government approved policies for affordable houses. Here the term 'company' includes the group companies, subsidiary companies, associate companies etc.



ARTISTIC IMAGE



## IGBC GREEN GOLD RATING

## GO GREEN SAVE EARTH



### SOLID WASTE MANAGEMENT

#### BENEFITS

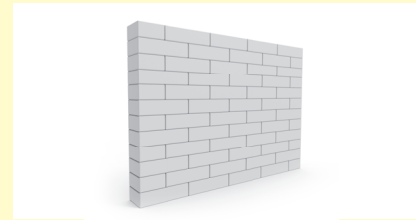
Segregate the solid waste into dry and wet waste to produce manure for plantation.



### SOLAR PANELS

#### BENEFITS

Generating electricity for lighting the common areas, saving energy



### ENVIRONMENTAL SUSTAINABILITY

#### BENEFITS

- More economical and stronger than conventional bricks
- Less seepage and breakage
- Eco-friendly



### CP FITTINGS

#### BENEFITS

Low-flow fixtures for water saving



### EXTERNAL & INTERNAL PAINTS

#### BENEFIT

Resist extreme weather conditions



### LED LIGHTING

#### BENEFITS

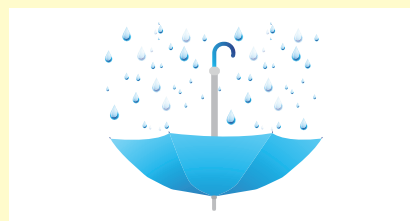
- LED in common areas
- Energy efficient



### DOOR & WINDOW : STEEL/ALUMINIUM POWDER COATED/UPVC

#### BENEFITS

- High performance glass with light transmission
- Better cooling & energy saving than plain glass



### SUSTAINABLE WATER MANAGEMENT FEATURES

#### BENEFITS

- Provide alternative water supply
- Prevent flooding and soil erosion



### TREATMENT AND USE OF GREYWATER

#### BENEFITS

- Lesser demands on the conventional water supply
- Decrease in household water bills
- Reduction in the amount of waste water entering into sewers

You get an ideal home in Signature Global Superbia, spread across 7.325 acres and surrounded by well-established societies in a well-developed, urban location. Well connected from NH-8, Dwarka Expressway and Pataudi Road, the project is IGBC Gold Rated. Built with green building initiatives, the affordable apartments come with world-class facilities. You will find everything you need in a home and more.

## LOCATION ADVANTAGES\*

1. Easy & smooth connectivity from Pataudi road, Dwarka Expressway, NH8 , KMP Expressway and IGI Airport.
2. Close proximity to the huge green belt of Sector 94 .
3. Direct connectivity to IMT Manesar.
4. AIIMS National Cancer Institute, Badsa, Jhajjar, 12 km away.
5. Sultanpur National Park 8 km away.
6. Minutes away from transport and communication areas.
7. Educational institutions like Jyoti public school, Maria Montessori School, Yaduvanshi School, SGT Group Of Institutes, Sharda International School, Colonel's Public School and Gurugram University(under construction) are within close proximity.
8. Recreational areas, like Sultanpur Bird Sanctuary, and huge commercial belts are in close proximity.
9. Surrounded by residential group housing societies and townships.
10. Close to Kadipur Industrial Area.
11. Upcoming rapid metro , ISBT (Kherki Daula)and multi-utility are in close proximity.
12. Located on a 84-meter-wide road.

\* Subject to traffic condition at relevant point of time.

**SIGNATURE GLOBAL**  
**SUPERBIA**  
 PRIDE OF OWNING CLASSY APARTMENT  
 SECTOR 95, GURUGRAM

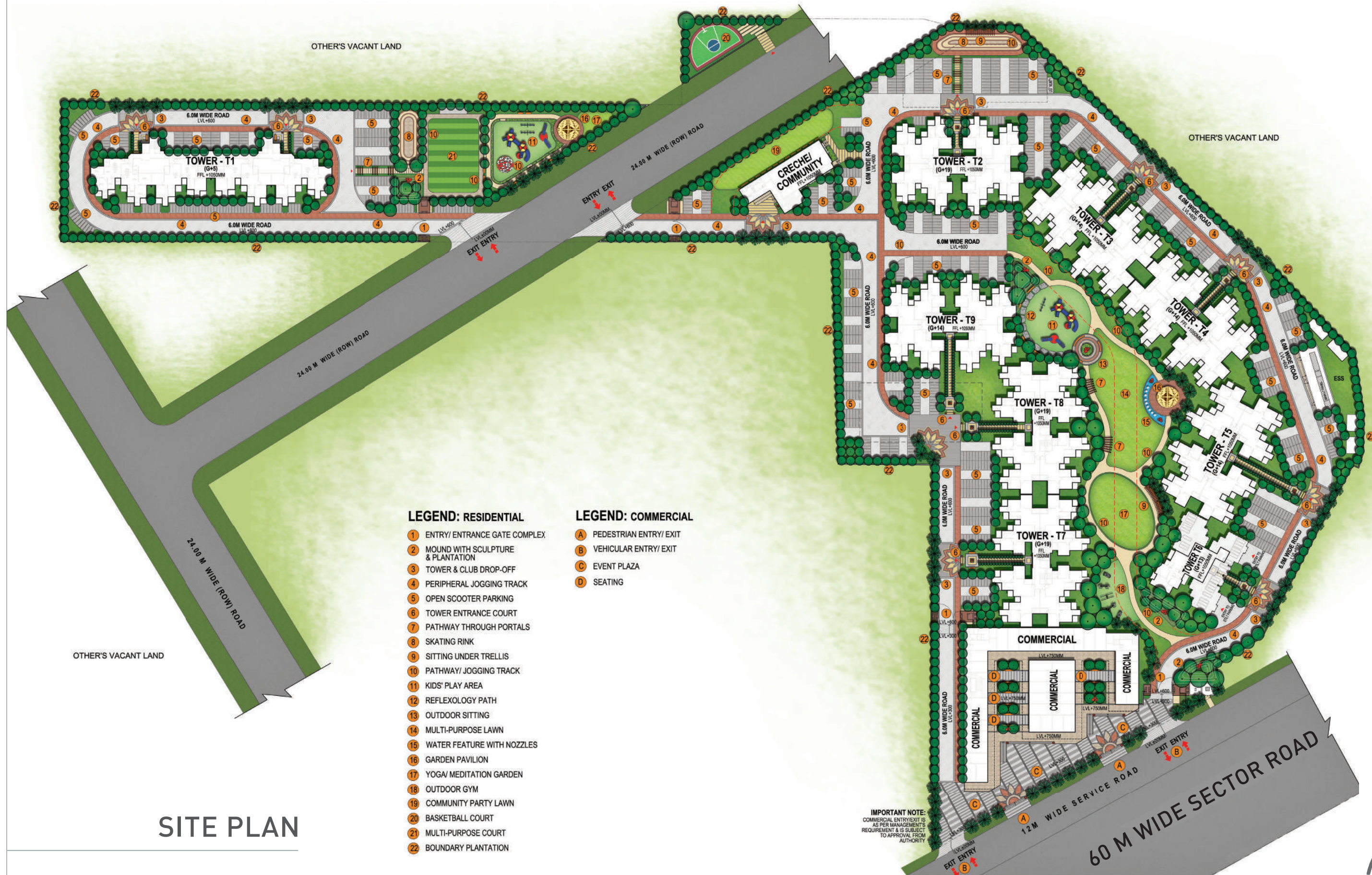


**LOCATION MAP**

MAP SHOWN HERE IS BASED UPON GOOGLE MAPS



BANG ON 84M WIDE ROAD



**LEGEND: HARD LANDSCAPE:**

LEGEND	DESCRIPTION
	DROP-OFF ACCENT PAVING
	PATHWAY/ JOGGING TRACK
	STEPPING STONES
	SYNTHETIC SURFACE FOR KIDS PLAY AREA
	SEATS IN NATURAL STONES
	SCULPTURE
	ENTRY/ EXIT POINTS

**SOFT LANDSCAPE:**

LEGEND	DESCRIPTION
	PLANTER/ PLANTING BED
	LAWN
	ORNAMENTAL FOLIAGE/ FLOWERING TREES
	ORNAMENTAL PALM TREES

- LEGEND: RESIDENTIAL**
- 1 ENTRY/ ENTRANCE GATE COMPLEX
  - 2 MOUND WITH SCULPTURE & PLANTATION
  - 3 TOWER & CLUB DROP-OFF
  - 4 PERIPHERAL JOGGING TRACK
  - 5 OPEN SCOOTER PARKING
  - 6 TOWER ENTRANCE COURT
  - 7 PATHWAY THROUGH PORTALS
  - 8 SKATING RINK
  - 9 SITTING UNDER TRELLIS
  - 10 PATHWAY/ JOGGING TRACK
  - 11 KIDS' PLAY AREA
  - 12 REFLEXOLOGY PATH
  - 13 OUTDOOR SITTING
  - 14 MULTI-PURPOSE LAWN
  - 15 WATER FEATURE WITH NOZZLES
  - 16 GARDEN PAVILION
  - 17 YOGA/ MEDITATION GARDEN
  - 18 OUTDOOR GYM
  - 19 COMMUNITY PARTY LAWN
  - 20 BASKETBALL COURT
  - 21 MULTI-PURPOSE COURT
  - 22 BOUNDARY PLANTATION

- LEGEND: COMMERCIAL**
- A PEDESTRIAN ENTRY/ EXIT
  - B VEHICULAR ENTRY/ EXIT
  - C EVENT PLAZA
  - D SEATING

**IMPORTANT NOTE:**  
 COMMERCIAL ENTRY/EXIT IS AS PER MANAGEMENT'S REQUIREMENT & IS SUBJECT TO APPROVAL FROM AUTHORITY

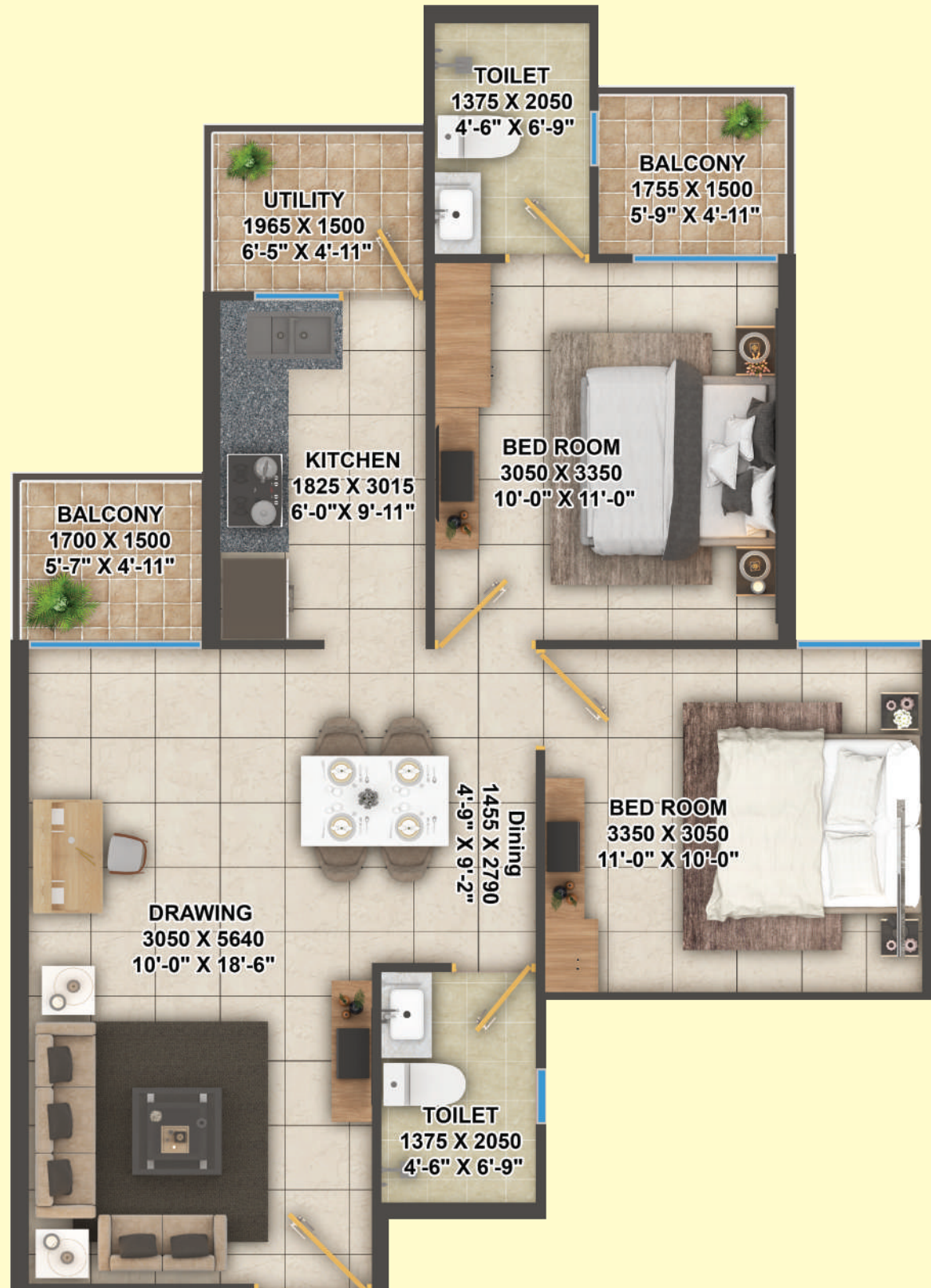
**SITE PLAN**



\* These are artistic images and only for representation purpose.

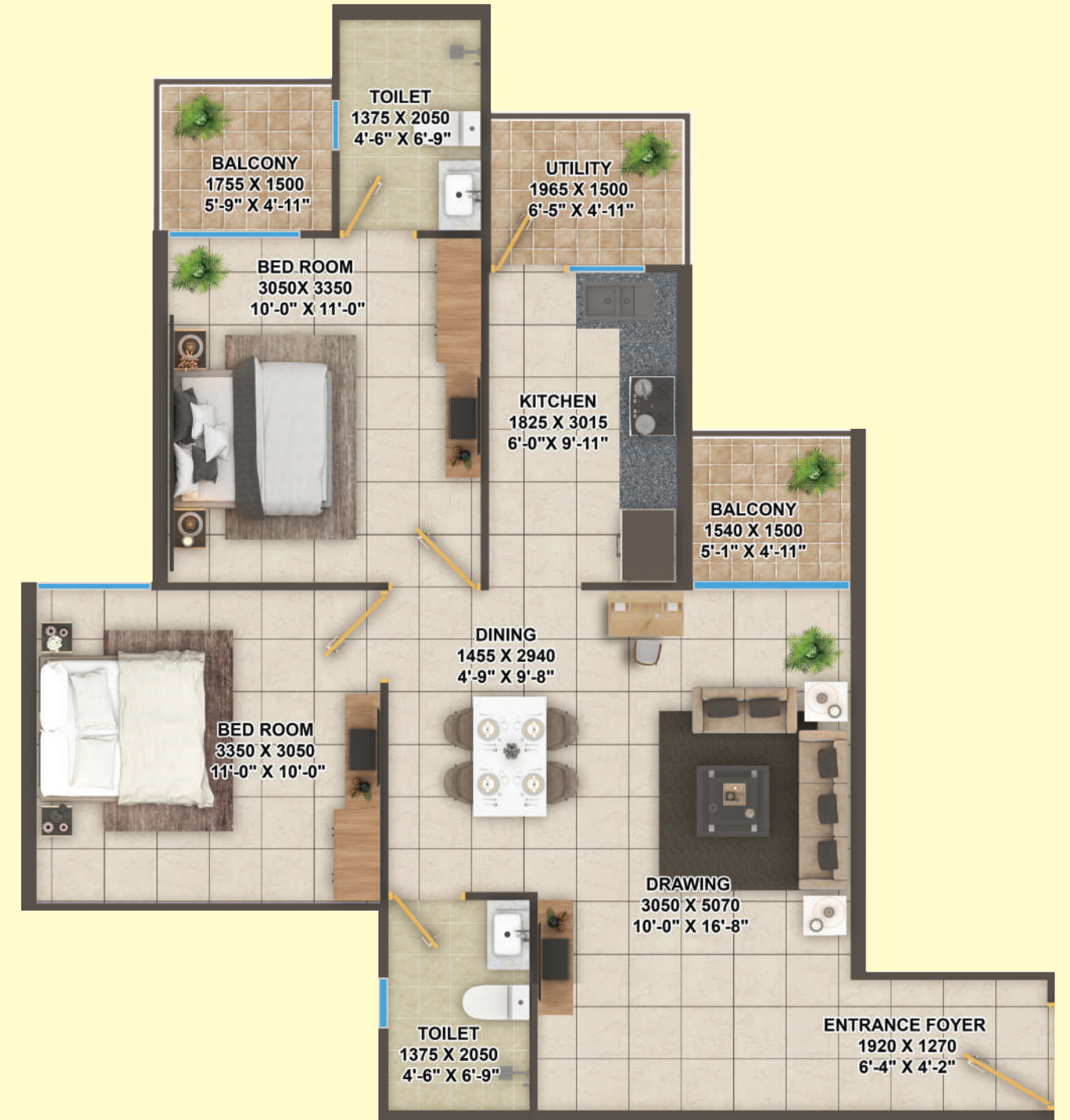
**TYPE 01 (2BHK) | COST @ ₹23,84,452**

C. A - 585.174 SQ.FT. | B. A - 87.511 SQ.FT.



**TYPE 02 (2BHK) | COST @ ₹24,20,532**

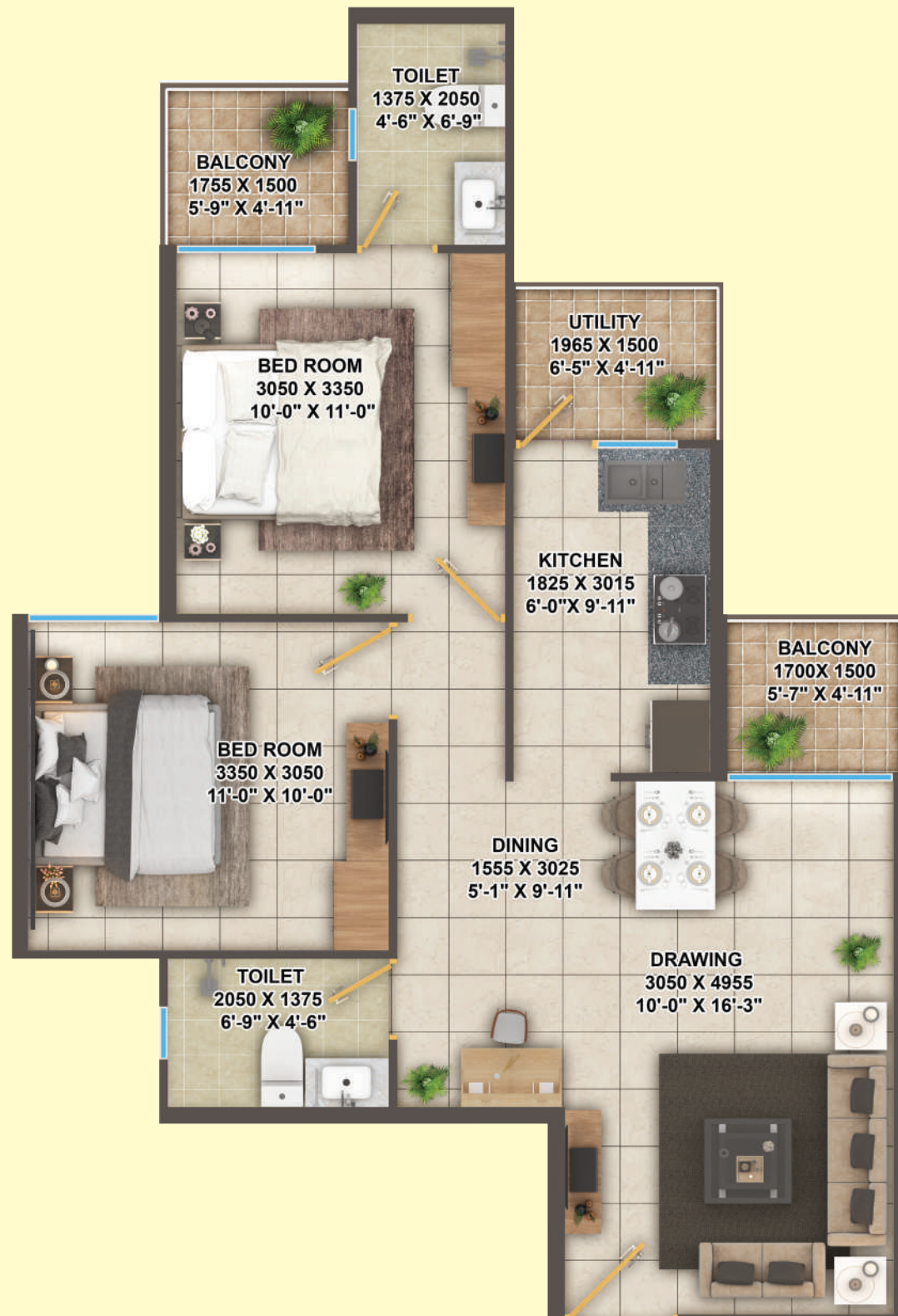
C. A - 594.517 SQ.FT. | B. A - 84.928 SQ.FT.



C. A - CARPET AREA  
 B. A - BALCONY AREA

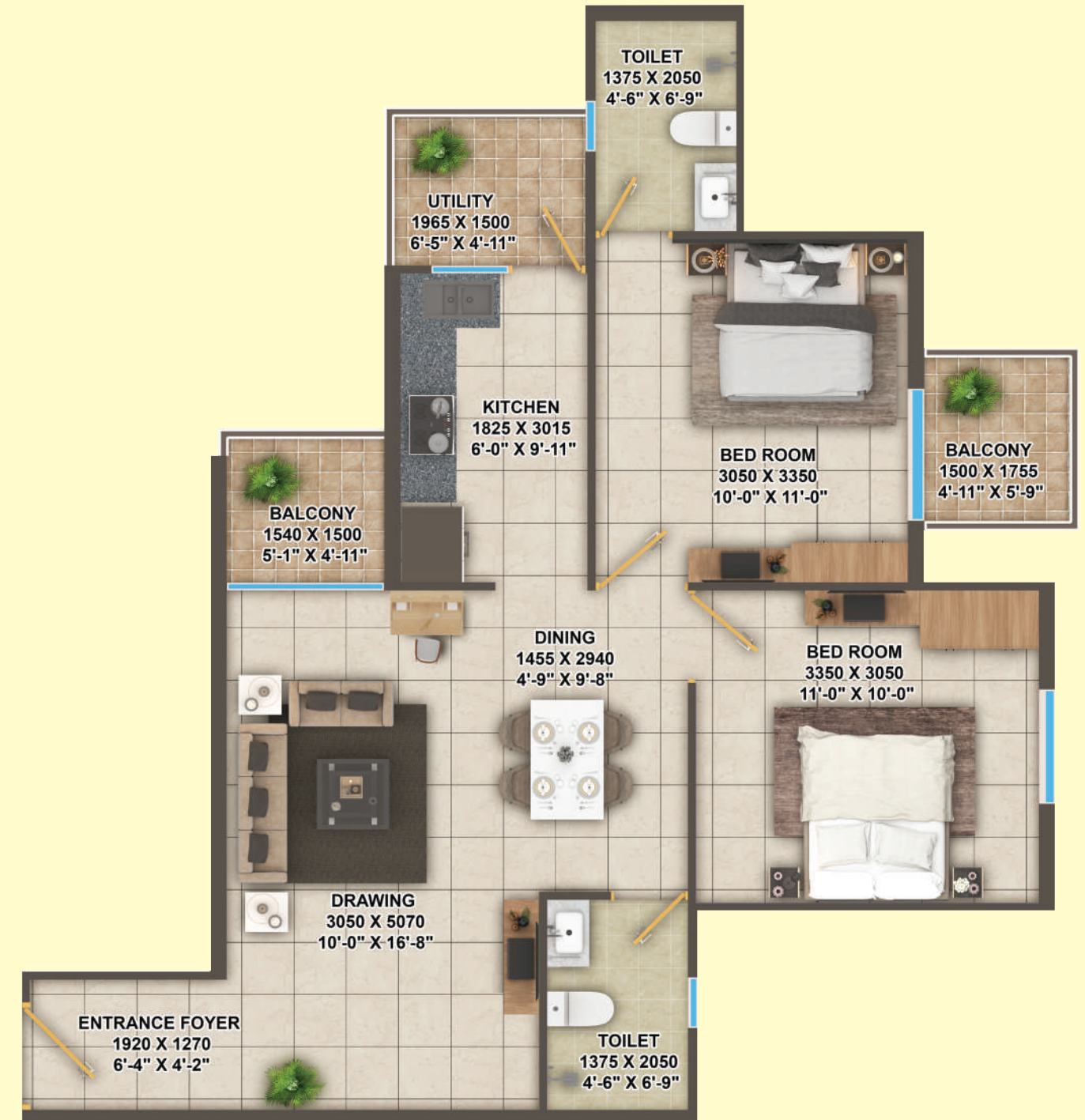
**TYPE 03 (2BHK) | COST @ ₹23,86,004**

C. A - 585.562 SQ.FT. | B. A - 87.511 SQ.FT.



**TYPE 04 (2BHK) | COST @ ₹24,25,012**

C. A - 595.637 SQ.FT. | B. A - 84.928 SQ.FT.



C. A - CARPET AREA  
 B. A - BALCONY AREA





KIDS PLAY AREA

ARTISTIC IMAGE



OUTDOOR GYM

ARTISTIC IMAGE



BASKETBALL COURT

ARTISTIC IMAGE



PAVILION

ARTISTIC IMAGE



COMMUNITY HALL

ARTISTIC IMAGE



SKATING RINK

ARTISTIC IMAGE



TOWER DROP OFF

ARTISTIC IMAGE