





FROM THE MAKERS OF

ITRENDTM HOMES
LIFE TRENDS HERE
HINJAWADI II

ITREND[®]
Life
WAKAD

ITREND[®]
Life2
WAKAD



THERE'S SO MUCH MORE TO LIFE THAN:

- Following the same mundane routine every day
- Living in a home not designed to fit your specific needs
- Waiting for the weekend to rejuvenate and relax



THERE'S SO MUCH MORE TO LIFE AND THAT COMPRISES:

- Living in a home customized down to your perfection
- Feeling a true connection with the city's beautiful vibe
- Living a lifestyle that offers exhilarates and delights your life

UNRIVALED LOCATION

AN ADDRESS THAT CONNECTS ALL THE DOTS OF YOUR LIFE

Itrend Life is sited at the heart of the city which makes it the best place to settle down. It's as close to any prominent location in the city as it is to your heart. From work to education, shopping to happening nightlife it perfectly brings closer various aspects of your life while expanding your horizons of opportunities at the same time.



AN EXTRAVAGANT LIFESTYLE

A PROPERTY THAT'S GOING TO MAKE YOU FALL IN LOVE WITH YOUR LIFE

The moment you step into ITrend Life 2; your life is going to take a fancy turn. You will have a perfect place to work out and an extravagant Multipurpose Play Court to chill at, a nice kids' area, and a Multipurpose hall to spend a lovely day at. Here, you will have a lot of fun activities to indulge in with your family. With all the happening activities and delightful amenities around your life will start to feel like a holiday and the lines between work and leisure will get blur.





ZERO SPACE WASTAGE

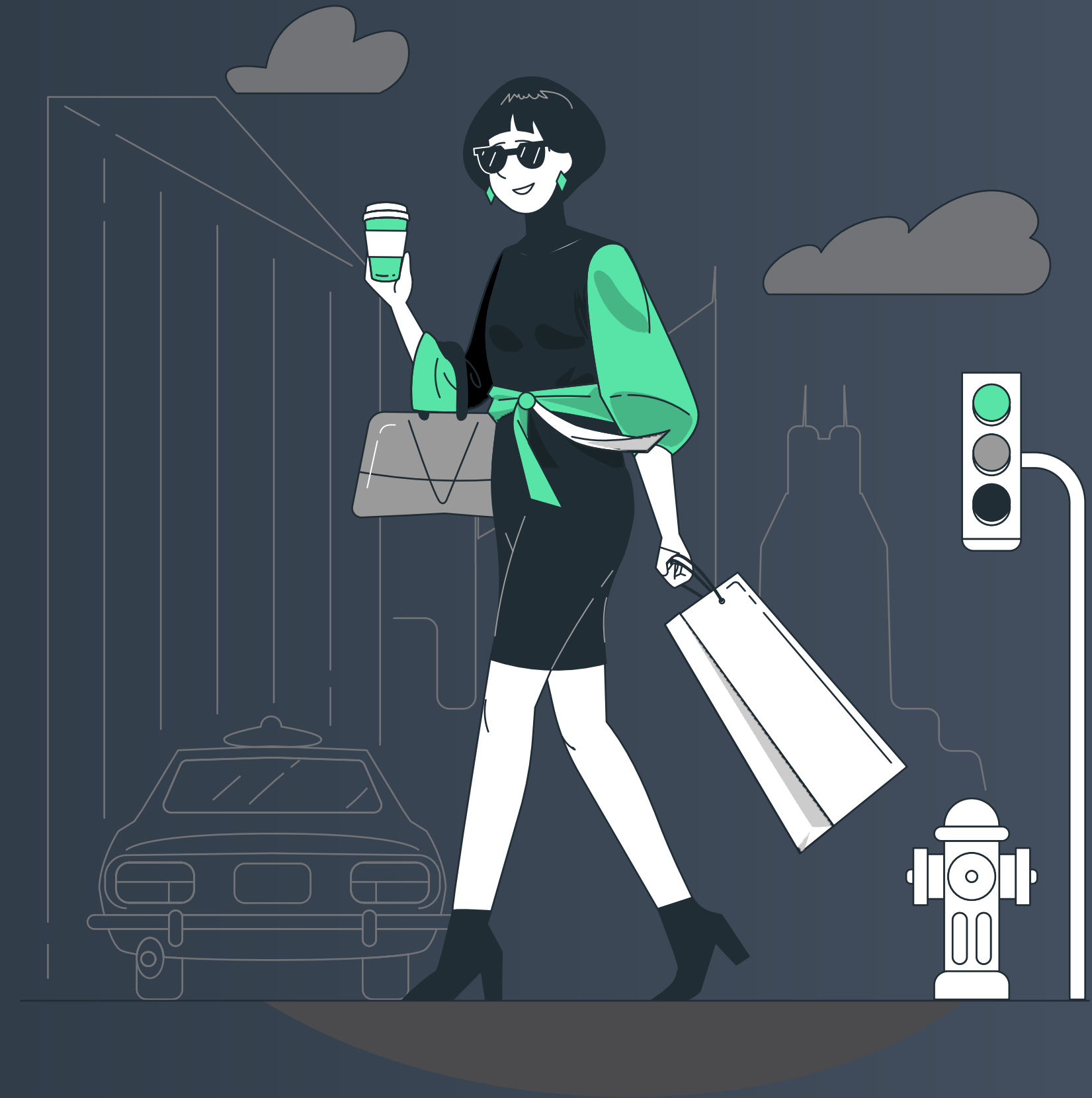
A HOME THAT'S WORTH EVERY PENNY SPENT

It's a home where every part and corner of it is yours to own and use. It's your hard-earned money and it's been put to the best use. Every penny of your money has been translated into a home space. The super airy rooms and the zero space wastage interiors reflect what thoughts have been put into designing these classic home spaces.

SPLENDID OUTDOORS

IT'S WHERE YOUR VIBE WITH THE CITY'S HEARTBEAT

A home that will bring you closer to the city like never before. It is surrounded by all the sassy, splendid, futuristic, and exciting lifestyle opportunities that will change your life for good. From extravagant shopping to dining experiences, easy commute to work and education centers, proximity to tech parks, and the city's growing skyline it's going to add value to your life in every which way possible.





ITREND'S ADVANTAGE

FROM ABOVE AND BEYOND IT'S THE BEST PLACE TO BE AT

The best of the best is the ITrend Advantage which is going to shower you with unmatched pampering and superior luxuries. It's your escape from the usual and away right to the heart of the city. It fits in your budget, yet has every fancy feature in it that you need for a happy life. It's a home that can be anything and everything you want at your command.

- Intelligent Planning
- Lifestyle Amenities
- Convertible Homes
- Superb Location
- Best Price Assurance
- Trendy Work-From-Home Spaces

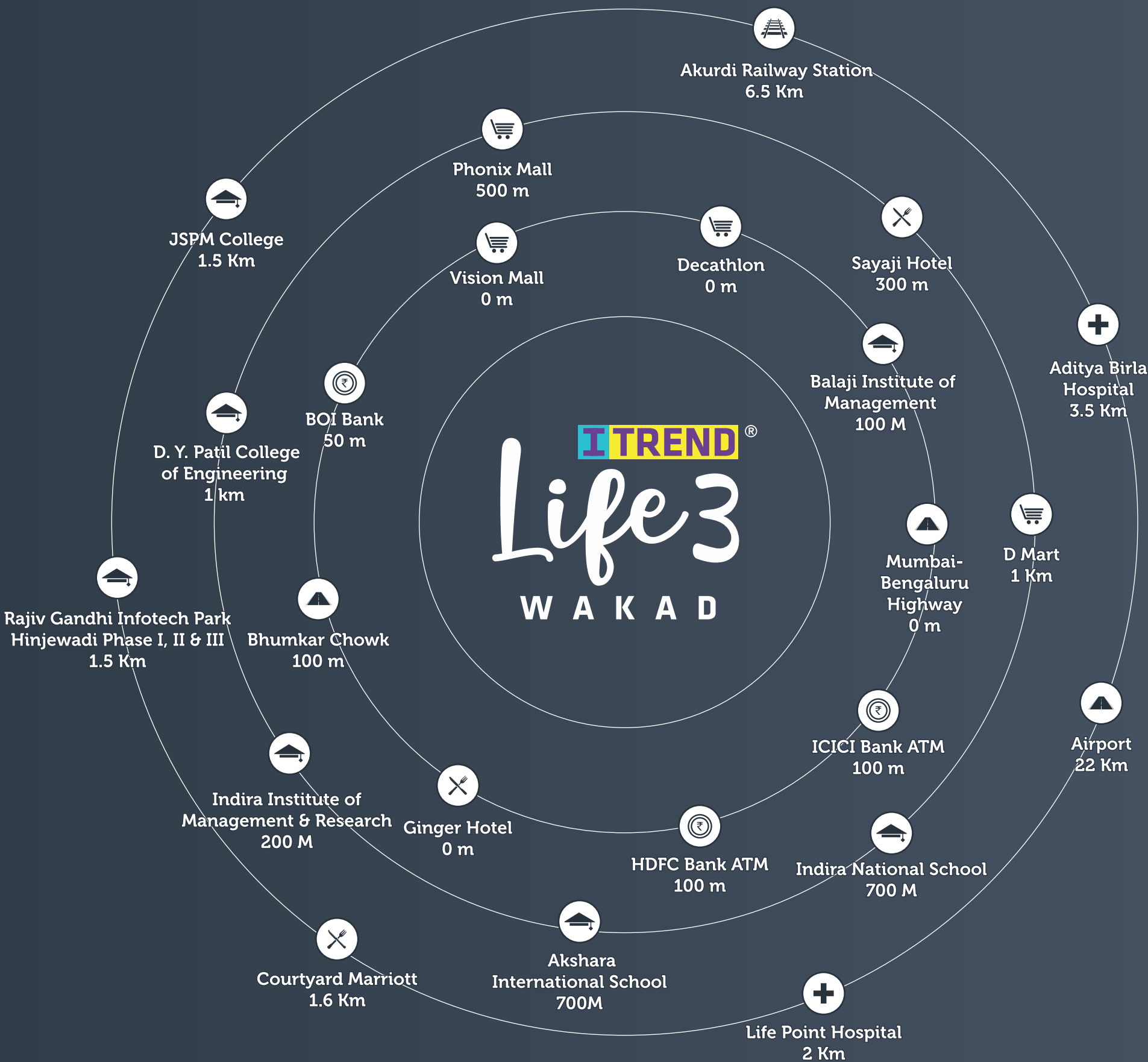
ITREND®
Life3
WAKAD



Artist's Impression



THRIVING SOCIAL INFRASTRUCTURE



AMENITIES

A proper embodiment of a happy and fulfilled life surrounded with luxurious and extravagant amenities. It will offer you the kind of lifestyle that will justify your need and call for a fancy life.



Swimming Pool



Gazebo



Gymnasium



Cricket Pitch



Senior Citizen Area



Kids Play Area

SPECIFICATIONS

Each and every specification of your new home has been crafted carefully to ensure you get the pampering you deserve. Your new life should be the epitome of comfort, class, and luxury and we have gone that extra mile to offer you just that.

STRUCTURE

- Earthquake resistant
- Internal gypsum finish plaster, external sand finish plaster

KITCHEN

- Black granite platform
- Stainless Steel sink
- Dado upto Two Feet from Otta
- Provision for exhaust fan

DRY BALCONY

- Washing Machine point
- Proper water inlet & outlet points

FLOORING

- 2 X 2 Vitrified tiles
- Anti-skid wooden finish tiles in terrace
- Toilets -Designer glazed tiles, anti-skid tiles for flooring
- 2x2 Wooden finish vitrified tiles in Masterbedroom

DOORS

- Laminated flush doors with fitting for main door
- Internal moulded door, Toilet door - Flush waterproof door
- Aluminium sliding doors for terrace
- Marble / Wooden door frame in bath / WC - Wooden door frames elsewhere

WINDOWS

- 3 Track aluminium windows - Marble sill for all windows

PAINTING

- Premium quality internal paint - Semi acrylic external paint

TOILETS

- Designer glazed dado tiles, anti-skid tiles for flooring
- Provision for exhaust fan in toilets
- Provision for solar and geyser in Master toilet
 - Branded sanitaryware
- Good quality CP fittings

ELECTRIC

- Modular switches
- TV point in Living & Master bedroom
- Concealed wiring with circuit breakers
- Tele point in Living
- Provision For DTH connection
- AC point in Master bedroom

UTILITIES & OTHER

- Spacious circulation lobby
- Automatic elevators
- Power back-up for common areas and inverter point in home
- Solar water heater

SECURITY

- CCTV surveillance in common areas

Artist's Impression



CUT SECTION

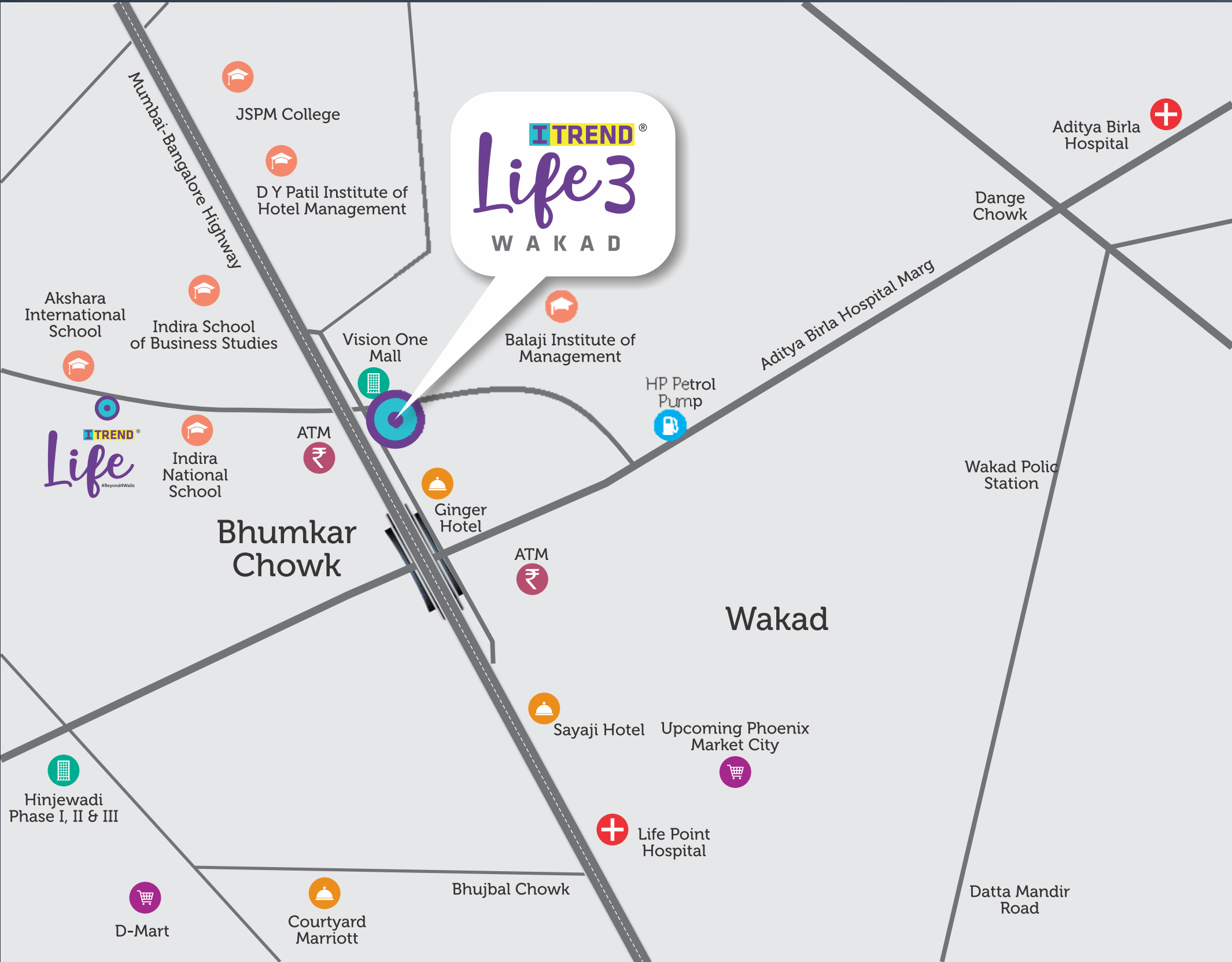


2 BHK



WAKAD

PUNE'S UPSCALE ADDRESS WITH UPGRADED LIFESTYLE AVENUES



A Rich Legacy

At Saheel Properties, we believe in redefining standard of living through constant innovation. Transparency, Customer Centricity and Quality are top three core values that have helped us stay ahead in terms of property offerings. Our portfolio includes the most stylish and luxurious residential properties in Pune.

The commitment of our company is towards providing a higher quality of life in all our properties. From addressing the most basic needs like power and water to provision of world-class amenities, we strive to combine comfort with luxury in all our real estate ventures.

10

Years of Experience

15

Lacs sq.ft. Ongoing Development

10

Lacs sq.ft. Developed Area

ONGOING PROJECTS



COMPLETED PROJECTS



www.saheelproperties.com

A Project by



Site Address:
S.No. 123, Near Ginger Hotel,
Bhumkar Chowk, Wakad, Pune 411057.

Office Address:
Saheel Properties, Office No.: 210, V18, Opp. Cummins
India Campus, Balewadi High Street, Pune, - 411045

Scan for Latest offers



Maha RERA: P52100029658
<https://maharera.mahaonline.gov.in/>

Call: 9511 9511 42

Disclaimer: The sale is subject to the terms of application form and agreement to sale. The images included are artist's impression indicating the anticipated appearance of ongoing development. The information is presented as general information and no warranty is expressly or impliedly given that the completed development will comply in any degree with such artist's impression or anticipated appearance. Recipients are advised to apprise themselves of the necessary and relevant information of the project(s)/offer(s) prior to making any purchase decisions. The contents of this brochure are purely conceptual and have no legal binding on us. The developer reserves the right to amend the layout, number of floors, number of flats, sizes, colour scheme, elevation, amenities and specifications.