

# UPTOWN MANHATTAN IN THANE

Presently launching Phase-I of The Icon



CALL 022 6288 9999

Highland Garden Road, Dhokali,  
Thane West, Maharashtra - 400607

<https://theiconthane.com>

Follow us on Facebook  
[www.facebook.com/RislandMumbai/](https://www.facebook.com/RislandMumbai/)



MahaRERA Registration NO.: P51700018370  
Details available at: <https://maharera.mahaonline.gov.in>

1.All images, stock images and views are indicative architect's impression and are illustration only.  
2.Variance of +/-3% in the unit carpet area possible due to design and construction variances.  
3.Soft furnishing, furniture, fittings and fixtures are for indicative purpose only. All specifications are subject to terms and conditions incorporated in the Agreement for Sale.

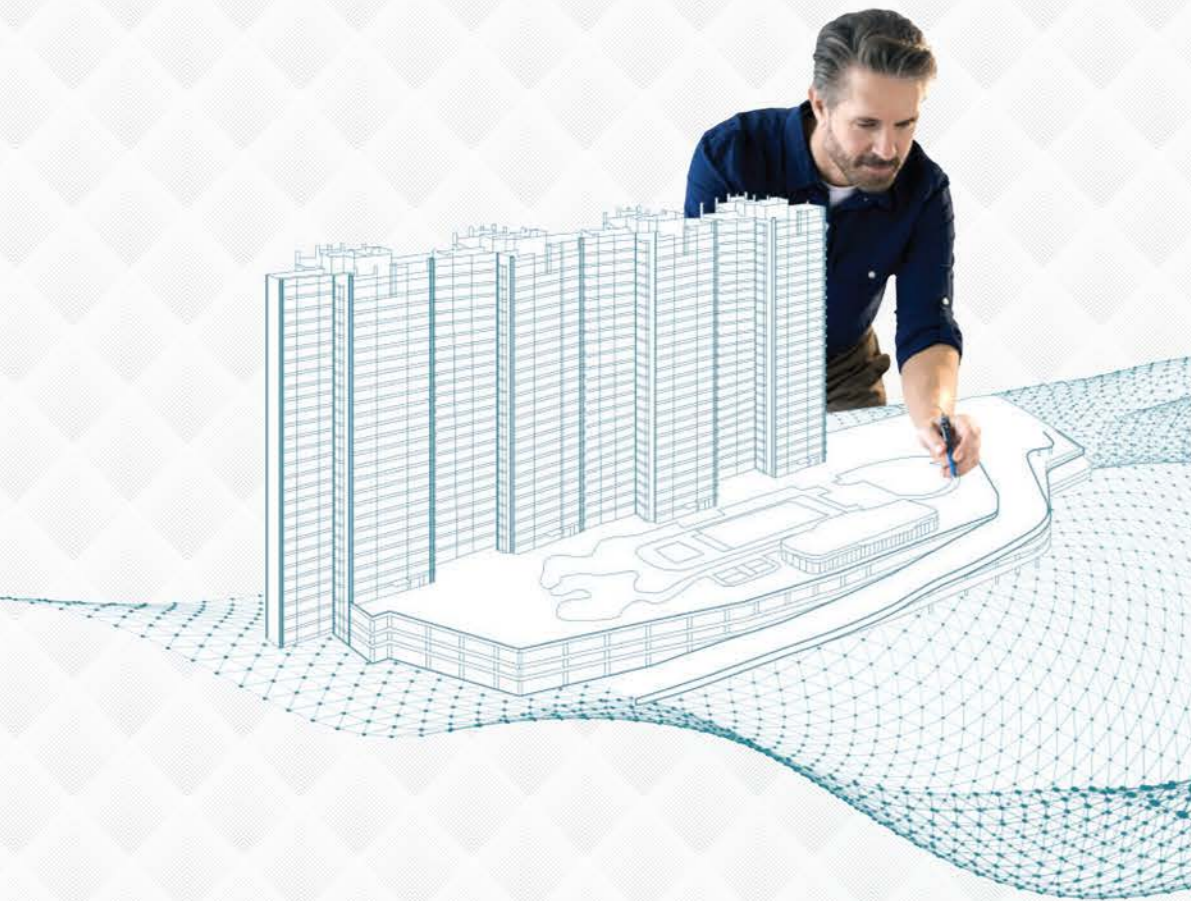
PROJECT BY  
**RISLAND | HIGHLAND**

This project is financed by Yes Bank Limited.

## SUPER ENGINEERING NEW APPROACH TO LIVING IN SUPER ENGINEERED HOMES

### BUILDING HOMES LIKE MANUFACTURING GERMAN LUXURY CAR

The Icon employs state-of-the-art SSGF construction techniques ( Safe & Share, Sci-tech, Green, Fine & Fast )and replaces traditional construction methods with Lego-style structures for the first time in India. Highly efficient cross construction method makes delivery of homes very fast.



## LAYOUT INNOVATION DILIGENTLY CRAFTED RESIDENCES DEFINING CREATIVE NEW HOMES

### ZERO WASTAGE SPACE WITH MAXIMUM USAGE AREA

Renowned Architect Hafeez Contractor, maker of the finest towers in India, brings innovation to layout design of modern aesthetics.

CARPET AREA - 756 SQ.FT | 3BHK COMPACT

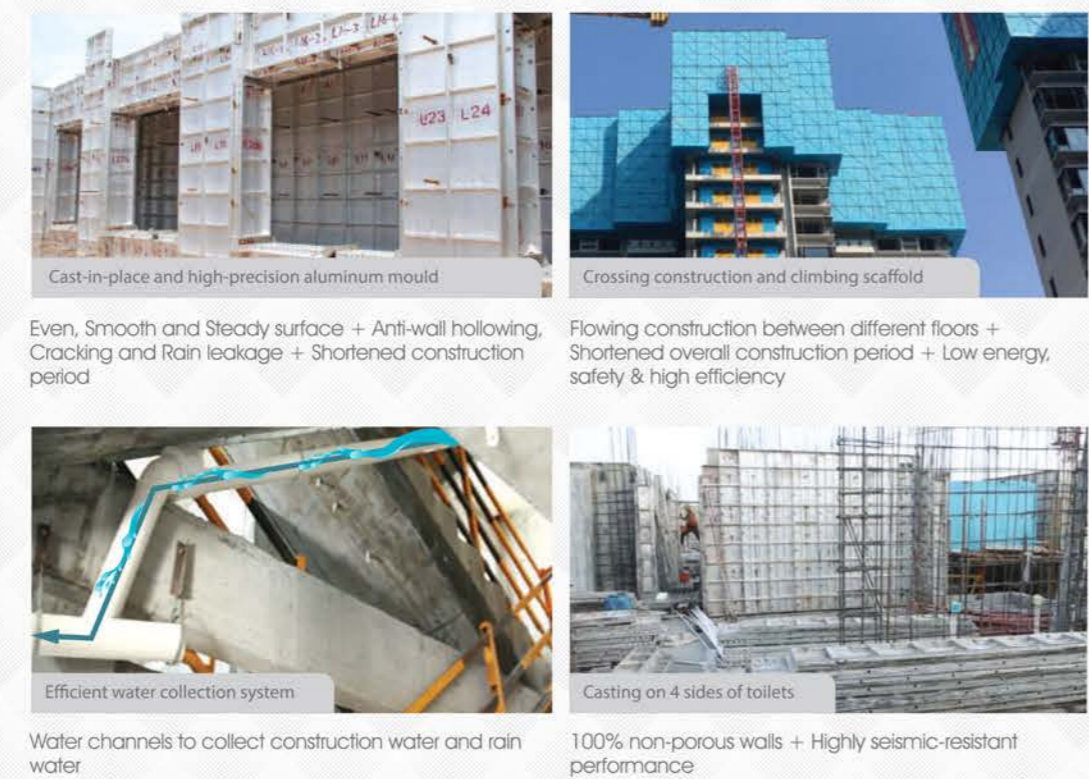


Full-frame living and dining rooms unfold great open views allowing ample sunlight and fresh air gush in

Defined areas for sleeping space and family room leaving no wasted spaces

270° balconies encircling living room and bedrooms give grand green views to residents

## INTRODUCING SSGF TECHNOLOGY FOR THE FIRST TIME IN INDIA



Even, Smooth and Steady surface + Anti-wall hollowing, Cracking and Rain leakage + Shortened construction period

Flowing construction between different floors + Shortened overall construction period + Low energy, safety & high efficiency

Water channels to collect construction water and rain water

100% non-porous walls + Highly seismic-resistant performance

## SMART LIVING USER-FRIENDLY CONTROL MODE IN CONJUNCTION WITH THE SMART LIVING CONCEPT

### INDICATOR OF MANHATTAN STYLE LIVING

Thoughtfully designed iCloud spaces for advanced smart control



\* Smart Toilets are only offered in product types of 3BHK-Compact & 3BHK-Luxury

## HIGH-TECH EFFECTUATION UNIFIED INTO 24x7 CONSISTENT AND FLAWLESS SECURITY SYSTEM

Streamlined competent technologies from Silicon Valley to build a real-life S.H.I.E.L.D. security system safeguarding your homes 24x7 with no blind corner.



## 360-DEGREE DEAD-ZONE-FREE SYSTEM

Electric patrol system and 24x7 guards surveillance keeps a grip on neighborhood security, ensuring safety for you and your loved ones.



**CONVENIENCE**  
**GOLDEN 2.5-RING ROAD**  
**NEW INTERPRETATION OF CITY CENTERPIECE**

Far away from the maddening bustle of 1st-ring road and the unfavorable 3rd-ring road, the 2.5-ring road can be regarded as the most livable stretch. Thane's 2.5-ring road stretch has already been developed for residences.

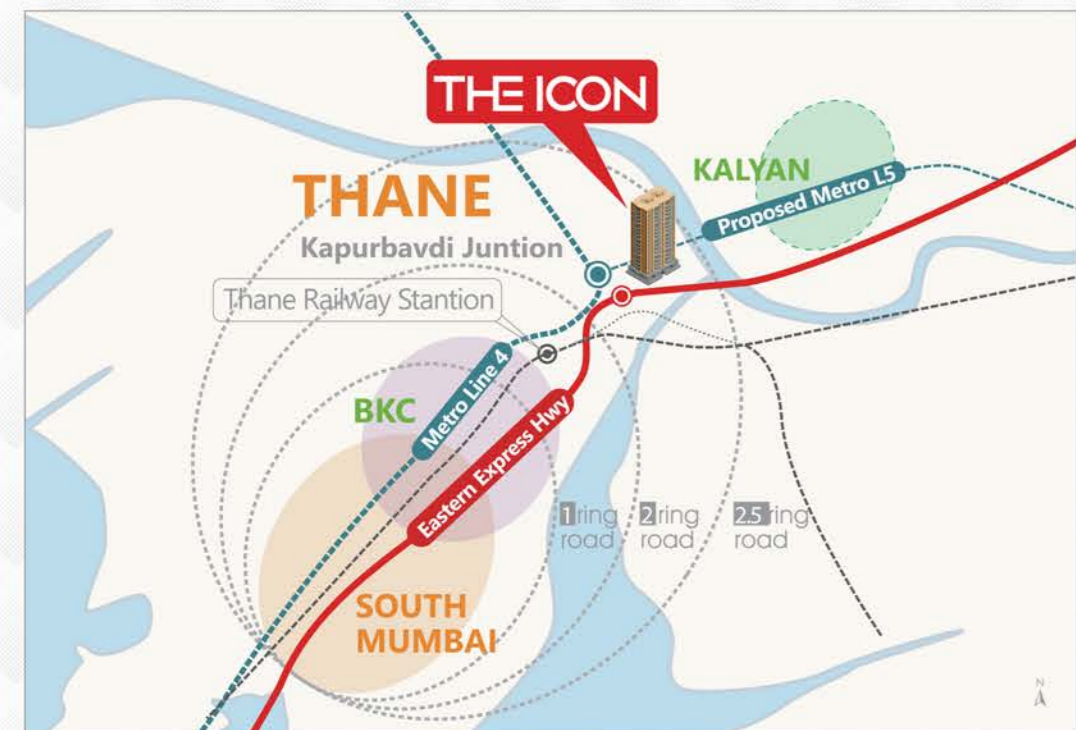
**T.O.D PUSHES CITY UPGRADING**

Transit Oriented Development is a type of community advancement with easy access to well-connected infrastructure, marking a potentially speedy transformation of the city.



**UPTOWN MANHATTAN IN THANE**

Encircled by transit networks, natural spectacular attractions and active commercial communes, The Icon stands within the realm of a potential counterpart for America's Uptown Manhattan.



With all relevant destinations within 2.5 km radius, like the Eastern Express Highway and roads connecting Thane to South Mumbai and Navi Mumbai in addition to the upcoming Metro Lines 4 & 5, The Icon revels in an excellent commute grid connecting all parts of India.



**THANE'S MOST SOUGHT - AFTER LAND**

The 2017 Mumbai government-approved Thane Smart City Project is dedicated to make Thane a new transportation and industrial hub on the lines of international cities as per the ongoing plan that includes water supply remodeling, suburban station, cluster redevelopment, sewage works and many more.

**money control** Last Updated : Dec 19, 2017 05:19 PM IST | Source: PTI

**TMC to invest Rs 5,493 crore to turn Thane into a 'smart city'**  
 A new suburban train station which is to come up between Thane and Malund will be called 'The Thane', according to the city's additional municipal commissioner.

PTI  
 Thane Municipal Corporation (TMC) has planned an investment outlay of Rs 5,493 crore to make the city smart, a senior official said.

Investment will be made only in the area development additional municipal commissioner, Sunil Chavan said at a CII event on smart cities on Tuesday.

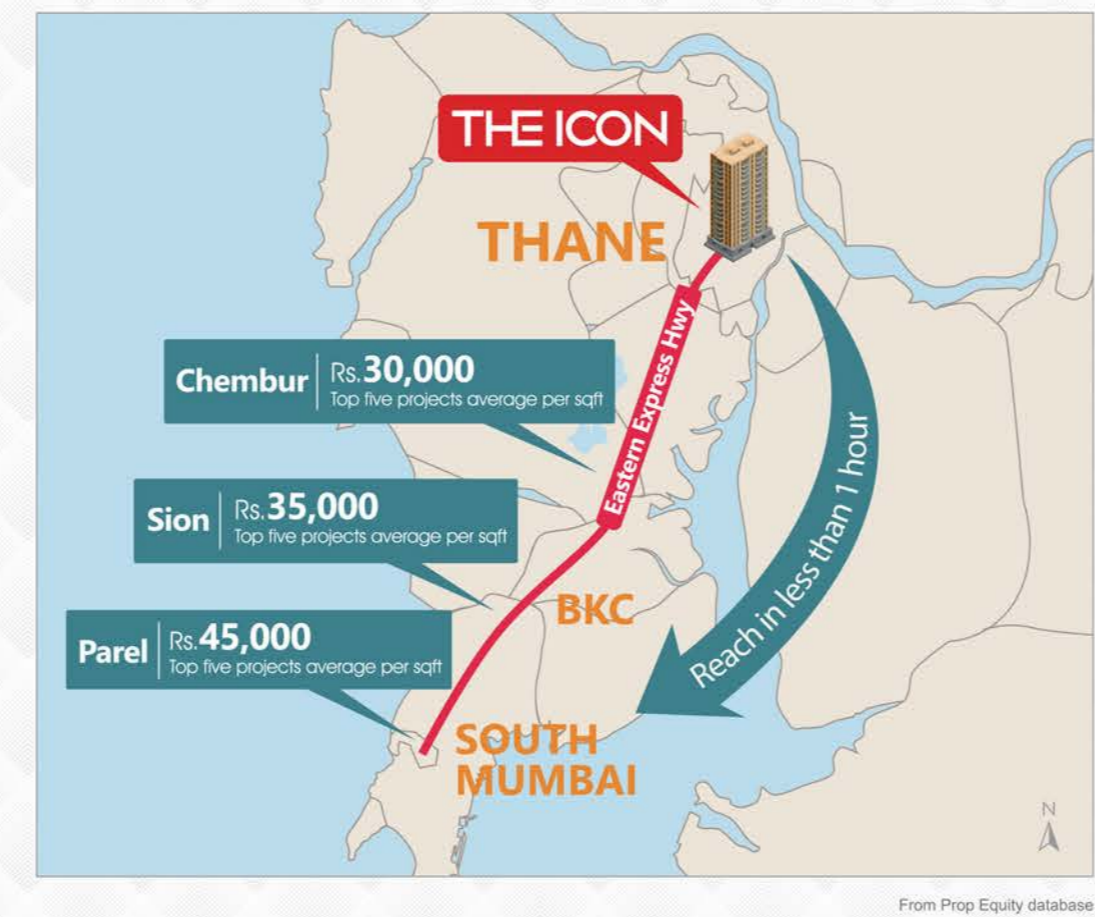
Chavan said the Corporation has already undertaken various development projects like building roads, encouraging non-motorised transport like footpaths and bicycle tracks to make the city more livable and citizen friendly.

"To ease the increasing pressure of existing Thane railway station, an alternative railway station is planned between Thane and Malund with an investment of Rs 300 crore. While Rs 120 crore would be utilised for the station, the rest will be deployed for development of the area around the station," Chavan said.

From online news screenshots

**THANE - THE INVESTMENT HOTSPOT**

Invest in one third of the price of South Mumbai, and get there in less than an hour along the Eastern Express highway.



**AMBIENCE**  
**FINEST SOCIAL INFRASTRUCTURE FOR**  
**FIRST-RATE UPPER CLASS LIFESTYLE**

**3 KMS TO MADISON AVENUE STYLE ENTERTAINMENT AND LIFESTYLE DESTINATIONS**

**3 KMS RADIUS**

- SCHOOL**  
Hiranandani School  
Sulochana Singhania School
- BANK**  
ICICI Bank  
HDFC Bank  
State Bank of India
- RECREATION**  
Golden Swan Country Club  
Suraj Water Park
- HOSPITAL**  
Bethany Hospital  
Jupiter Hospital
- PARK**  
Sanjay National Park  
Grand Centre Park
- MALL**  
Korum Mall  
Viviana Mall

**THE SANJAY GANDHI NATIONAL PARK AND YEOR HILLS ADD TO THE HAUTE LIVING EXPERIENCE**

On par with New York's Central Park, Sanjay Gandhi National Park is considered the green lung of Mumbai - nature's museum for the high-powered brains, whilst Yeoor Hills is known to receive the first rains of the monsoon. Amidst the aura, The Icon lays forward a 300 metre long arrival boulevard flanked by resplendent oak trees.

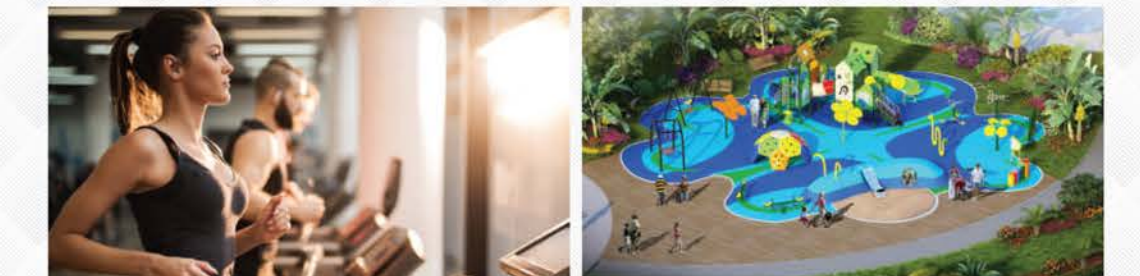


**COMFORT**  
**TOP-NOTCH AMENITIES WITHIN A**  
**SINGLE PLATFORM FOR THE ELITE**  
**LEAGUE**



**9440 SQ. FT SUPER CLUBHOUSE**  
 Indoor and outdoor multifunction party halls  
 Several ball sport courts  
 Separated office area  
 Gymnasium

**INTERNAL AMENITIES**  
 Swimming pools  
 Terraced recreation area  
 Badminton court  
 Prayer garden  
 Cricket play area  
 Jogging area  
 Multipurpose area  
 3 Layers parking area



**FULL LIFE-CIRCLE CLUB HOUSE WITH LIVABLE LANDSCAPE**  
 Entertainment area  
 Kids play area  
 Elder exercise space  
 Fitness centre

**3638SQ.FT AND 969SQ.FT KIDS PLAY AREA**

**ARCADIA**  
**POETIC DWELLING IN PICTURESQUE**  
**LIVABLE LANDSCAPE**

**INVITING NATURE INTO THE NEIGHBOURHOOD**

An all-natural livable landscape comprising of multidimensional layers of lawns, plantations and accessories, embellished with artefacts and statues to create an indispensable private garden.

