

U N D O  
—  
T H E C I T Y



ODELA

2, 3 & 4 BHK Luxurious Apartments



**LOHIA JAIN**  
**PROMOTERS & BUILDERS**



**A project approved by MAHA RERA**  
**MAHA RERA Registration Certificate No.: P52100014706**  
**[www.maharera.mahaonline.gov.in](http://www.maharera.mahaonline.gov.in)**

ODELA • BAVDHAN

# U N D O C O N C R E T E

—

Breathe easy amidst nature in our one-acre garden. The pleasant aroma of flowers and fresh air will accompany you on your morning walk. Isolated from the hustle and bustle of the city, peace of mind isn't hard to find when you're living at ODELA.



# UNDO STRESS



Be it summer, winter or the rains, anytime is a good time to unwind and relax with our large outdoor/indoor pools and meditation center. Well-located and easy to access, we ensure that you leave the stress of the city far behind.



# U N D O S C R E E N S



Your kids will have more reasons to step out and leave their gadgets behind. With plenty of indoor and outdoor activities, ODELA leaves no room for boredom. Engage your young ones with available play zones, gardens and dedicated spaces for sports.



# UNDO INACTIVITY

—

A healthy body and a healthy mind coincide.  
ODELA facilitates you to redefine your limits with  
an accessible jogging track, yoga center and gym.  
Well-maintained and with the best equipment,  
ODELA allows you to bring the focus on you.

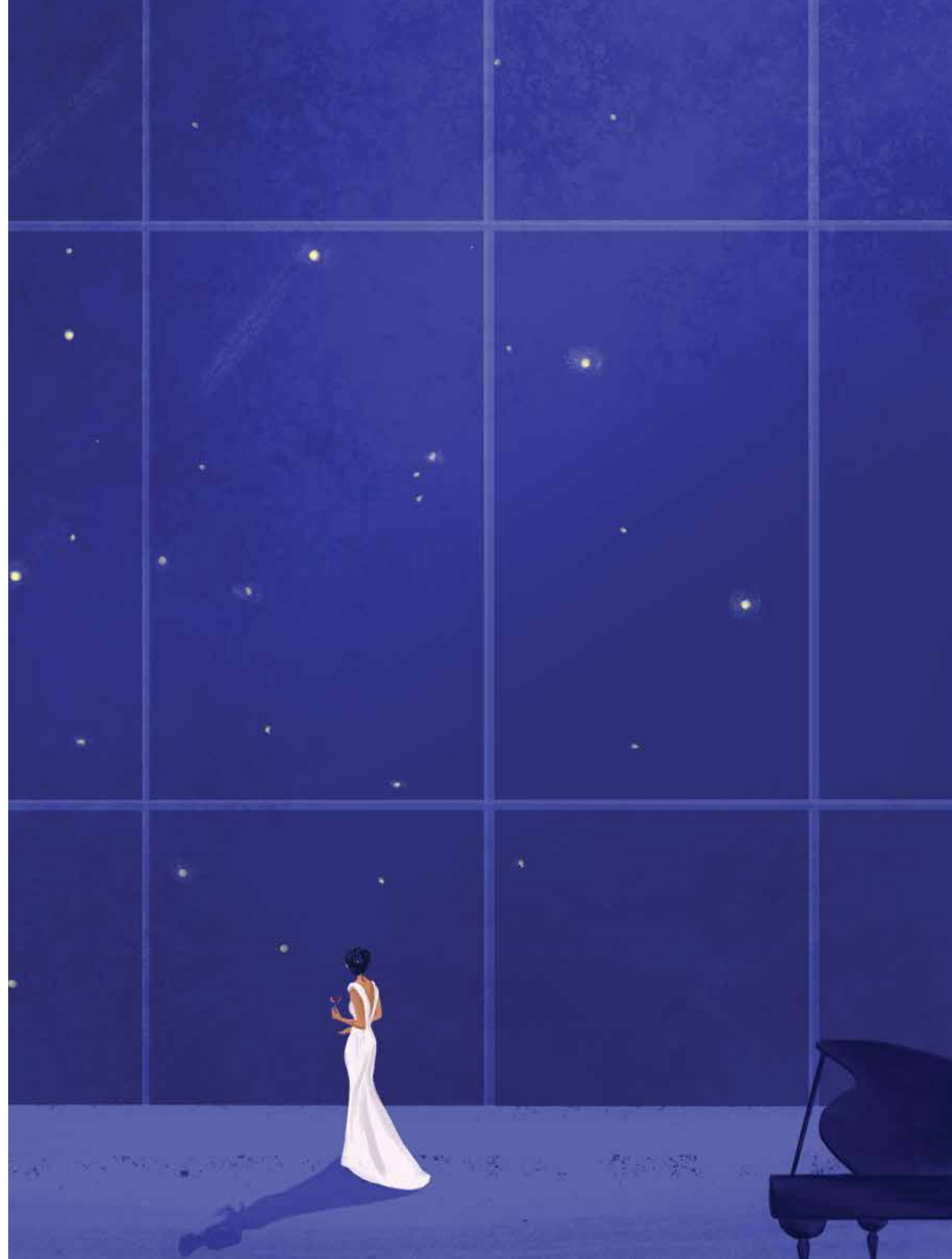


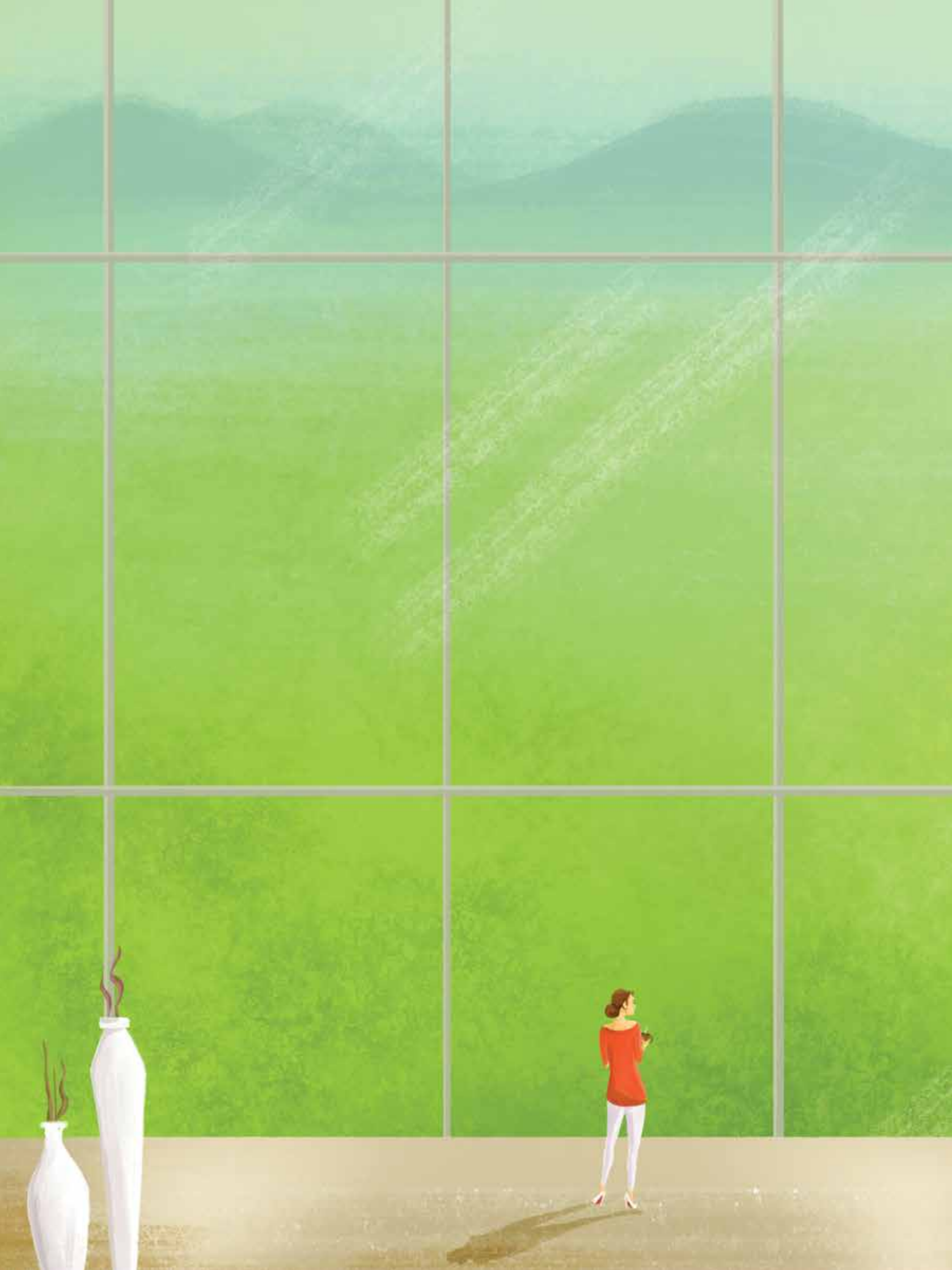
ODELA • BAVDHAN

# UNDO UNINVITING



Meet like-minded people and nurture fond memories in a spacious party hall that also opens to a lawn. With plenty of space to socialize, you wouldn't hold back on any of the invites when you're celebrating at ODELA.





O DELA • BAVDHAN

# U N D O B O U N D A R I E S

—

Admire splendor with windows that face stunning hill and river views. Designed to achieve optimum ventilation and the right amount of sunlight, it's hard to decide upon your favourite room when you're living at ODELA.



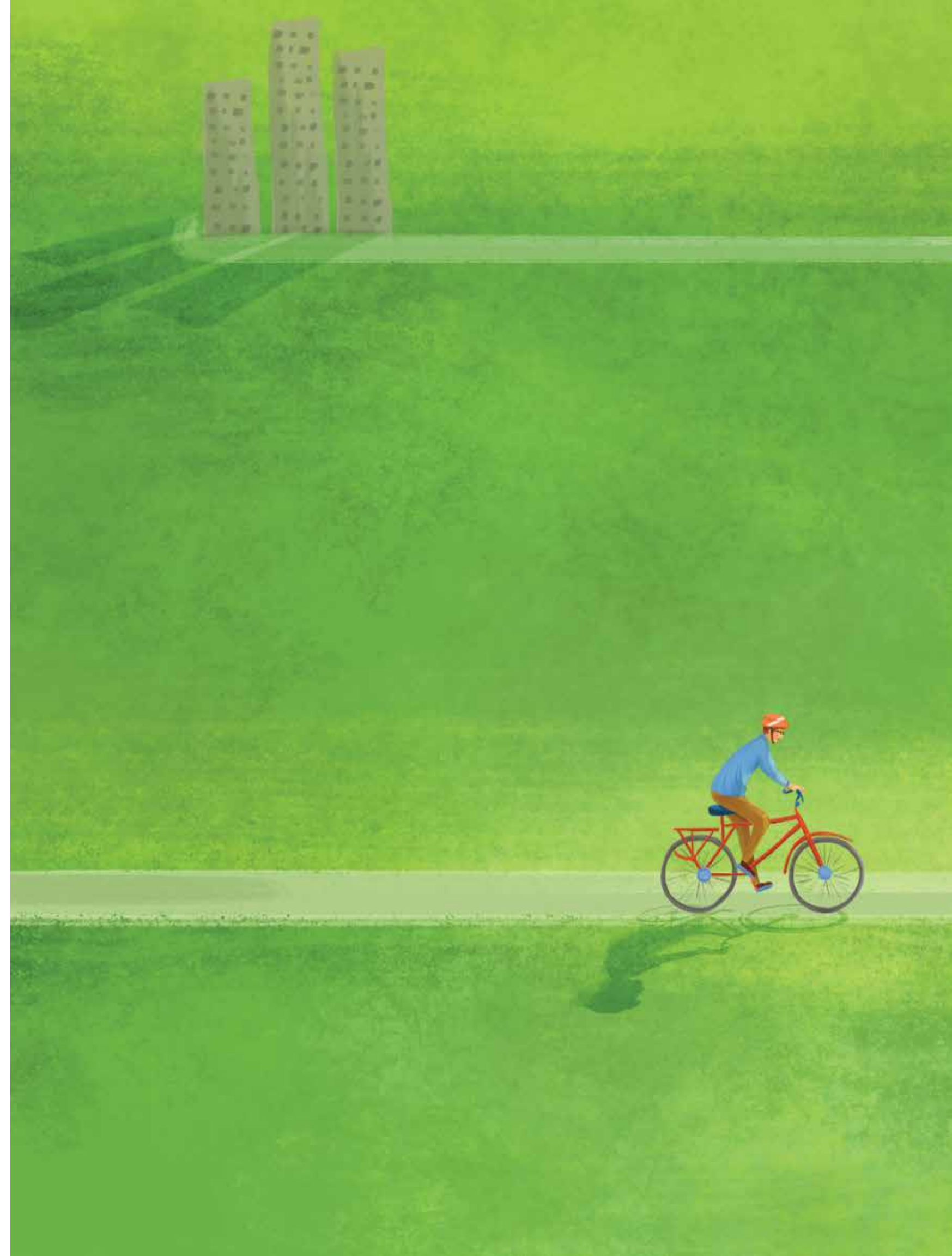


ODELA • BAVDHAN

# U N D O T H E C O M M U T E

—

A short walk is all that it takes to fulfill most of your needs when you're residing at ODELA. Located near prominent universities, renowned IT Hubs, and well-equipped utility outlets, convenience and comfort go hand in hand with your daily commute.



ODELA • BAVDHAN

# UNDO THE CITY

---

Developed by Lohia Jain builders, ODELA is made to be more than just a prime residency in Northwest Pune - it's an escape from the mundane. An urban getaway that's not only unique and unconventional, but also self-sufficient. Come home to the ideal choice.



# THE ARCHITECTURE

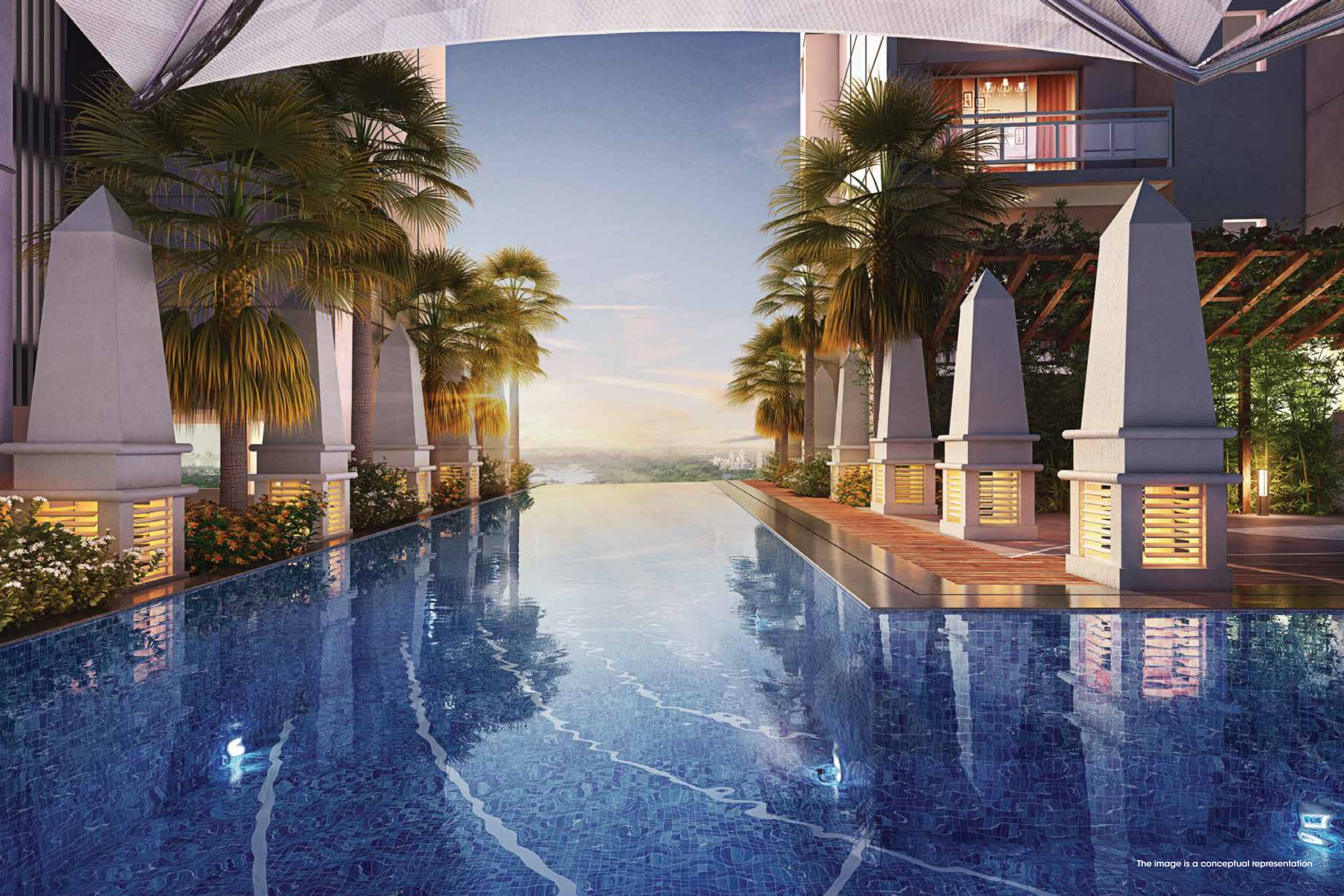
Designed by Nirav Shah, ODELA's state of the art structure reflects contemporary finesse outlined by a natural setting. With an intricately designed lobby, smart floor plans and windows that overlook a river and hill, there's no compromising when it comes to luxury.

## HIGHLIGHTS

3 Wings | 17 Floors | Lavish Garden | Green Building







The image is a conceptual representation



O DELA • BAVDHAN

# THE APARTMENTS

---

Attention to detail and maximum efficiency of space makes living here a sheer pleasure. Each apartment comes with attached balconies, windows designed for ample sunlight, quality fittings and interiors that reflect grandeur.

## HIGHLIGHTS

2, 3 & 4 BHK Luxurious Apartments | Hill and Garden View | Designer Fixtures  
Large Vitrified Tiles | Modular Kitchen





The image is a conceptual representation

# A M E N I T I E S

---

At ODELA, home is beyond just your 4 walls. It's a community of like-minded people that believe in a better lifestyle. Our well-planned high rises and recreational facilities ensure that there's more joy, luxury and comfort in every square foot.



Garden



Play Area For Children  
With Equipment



Indoor Games Area



Swimming Pool  
(Indoor/Outdoor)  
Separate Kids' Pool



Multipurpose  
Community Hall With  
Party Lawn



Security



Basketball Half Court



Podium Landscaped  
Garden



Gym/Fitness Centre



Walking/Jogging  
Track



Yoga & Meditation  
Centre



Senior Citizens'  
Lounge







The image is a conceptual representation



# BAVDHAN

Distance and timelines (shortest) are tentative and approximate, subject to road and infrastructure facilities provided by the appropriate authorities.



# CONTACT

## HEAD OFFICE

Lohia Jain House  
893/6, 2nd Floor, Bhandarkar Road, Goodluck Chowk,  
Deccan Gymkhana, Pune - 411004

**020 - 25651115/6 | 95 - 0314 - 0099**

[sales@lohiajaingroup.com](mailto:sales@lohiajaingroup.com) | [www.lohiajaingroup.com](http://www.lohiajaingroup.com)

## SITE OFFICE

Lohia Jain Square  
6th Floor, "B" Wing, Behind Maratha Mandir, Bavdhan,  
Khurd, Pune - 411021

**99 - 6065 - 5559**

## SITE ADDRESS

Survey No. 52/1B+1C+2(P)+3+4A,  
Survey No. 53/1+2+4A+4B+6(P)+9A+9B+10+11+12,  
Survey No. 53/8, Plot No. 1 & Survey No. 55/2, Bavdhan,  
Khurd, Pune - 411021

**[www.lohiajaingroup.com](http://www.lohiajaingroup.com) | [www.odela.in](http://www.odela.in)**

**Architect & Landscape Designer: Advance Concepts & Design Studio (ACDS) - Nirav Shah**

**Liasoning Architect: Subhash Shah & Associates**

**RCC Consultants: Sunil Mutalik & Associates | Legal Advisors: Adv. Satish P. Darekar**

