



Hello Life!





Soothing Greens.

Blue Skies.

Acres of Joy.

A brand new canvas called life.

Say Hello to Life. Golden Circle is a space that lets you reimagine life and provides you with everything that you need to focus on yourself. Reinvent life amidst nature, nurture your hobbies, rejuvenate and connect with likeminded people.

Its design ethos integrates life and form to create living spaces that are inspiring, invigorating and comforting. A perfect amalgamation of contemporary living & best-in-class hospitality awaits you.



Stunning Views.
Golden Rays.
Brewing Chats.
Start your day Your Way.

Elements have been harnessed in the central courtyard to welcome the warm morning sunshine to arouse your day. Exquisite open lounge spaces at each floor allows cool breeze to flow in. Inviting gathering spaces dot all around the property. Each one is a perfect setting to socialize, relax and feel elated.





Serene Sights. Beautiful Nights. Making Dreams Come True.



Enveloped in tranquility, here are 1, 2 and 3 BHK apartments that let you soak in the beauty of nature. Dual side opening doors that bathe you in golden sunlight. Breathtaking terrace gardens shower the starlight upon you. Wider bathroom doors, wide spaces for wheelchair mobility, antiskid flooring – all designed keeping your convenience in mind.

Live the nostalgia of stargazing and the grandeur of stunning living spaces, cocooned in unparalleled safety and design.



Win a Game. Swim Some Laps. Watch Drama Unfold. Fun is Just Around the Corner.

Golden Circle lays an ocean of opportunities to entertain you. The entrance embraces you with an open amphitheater, beautiful tennis court, swimming pool and clubhouse.

Curl up with your favourite book at the book café and inhale peace as you practice yoga. Golden Circle allows you to greet your loved ones in the incredible guest suites located within the community. Not to mention the housekeeping and laundry services to give you an experience of a lifetime.

Pursue a hobby you fancy through special interest groups offering adventure, trekking, cycling, painting, workout and gardening. An in-house dining space with a large adjoining kitchen, and a well-appointed Spa add to a life of comfort.

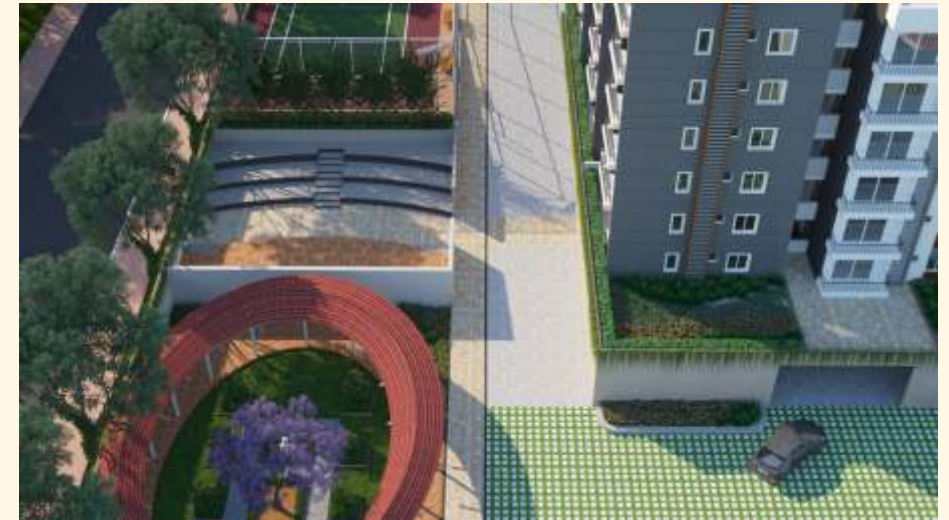




Dissolve into
Nature's Arms.

For 'Peace' is all
one Desires.

For those who have achieved almost everything, life chooses to surprise them in return. And, one of the beautiful surprises of starting over, comes in the form of this haven of green. Sit back and relax, meditate and reflect while you strengthen your spiritual confidence in our meditation space.





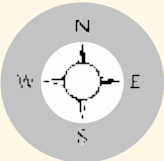
Grow what you Eat. Keep your Body Fit.

At Golden Circle, a healthy life is in your hands, literally. Get your hands dirty as you immerse your time in community farming. Revel in the joy of growing your own produce, be it fruits, vegetable or even herbs.

When you're not growing your own healthy diet, grow your strength and immunity. From specialized geriatric care to a pharmacy, enjoy the convenience of having everything within reach. Enrich your life all over again in your Glorious Golden Years.



MASTER PLAN



Project Highlights



Pedestrian friendly podium



Common terrace garden area



Spiritual center



Air-conditioned dining hall with an attached kitchen with outdoors dining



Gathering spaces in all floors



Community Farming



Wheel chair friendly corridors



Reflexology Path



Attached private gardens



Grand double height entrance lobby to give serenity



Healthcare center



End to end facility management services including laundry & healthcare services

Other Amenities

- Entrance Plaza with security cabin
- Provision for ATM Facility
- Amphitheatre
- Tennis Court
- Swimming pool
- Landscaped courtyard
- Jogging track
- Ambulance, doctor on call facility
- Clubhouse
- Provision for Convenience store
- Provision for Pharmacy
- Multi-purpose hall
- Health care Centre
- Provision for Spa and salon
- Guest suites
- Provision for Book café/ Library
- Indoor activity area (billiards, caroms chess etc)
- Air-conditioned Gym
- Open air aerobics/yoga deck
- Laundry facility
- Common Toilets for servants/drivers
- Rain Water Harvesting Pits
- Water Treatment Plant
- Sewage Treatment Plant
- Electrical Vehicle Charging Points (On chargeable basis)
- Car parks for differently abled
- Car wash area
- Indoor Badminton Court
- Provision for travel desk

Technical Specifications

STRUCTURE

RCC Framed Structure with Solid Block Masonry designed to withstand the wind and seismic loads.

Walls

Exterior Walls - Cement Plaster with exterior weather proof paint

Interior Walls - Smooth Finish cement plaster with paint over putty

FLOORING

Master Bedroom	Laminated Wooden Flooring/ Vitrified Matt Finish tiles
Bed Rooms	Vitrified Matt Finish tiles of reputed make
Living & Dining Rooms	Vitrified Matt Finish tiles of reputed make
Kitchen	Vitrified Matt Finish tiles of reputed make
Toilets	Anti-Skid Ceramic tiles of reputed make
Utility flooring	Anti-Skid Ceramic tiles of reputed make

DADOING

Kitchen Dadoing	Ceramic Tiles Dado upto 2.0 ft height of reputed make
Toilet Dadoing	Ceramic Tiles Dado upto 7.0ft height of reputed make
Utility Dadoing	Ceramic Tiles Dado upto 3.0ft height of reputed make

KITCHEN

Granite countertop and Stainless steel sink with drain board of reputed make. equivalent.

JOINERY

Main Door (Wheel Chair Friendly)	Engineered wood / Hard wood / Bison Panel frame with Engineered / Bison panel flush shutter
----------------------------------	---

Bedroom Doors

fitted with Hardware of reputed make.
Engineered wood / Hard wood / Bison Panel frame with Engineered / Bison panel flush shutter (double swing only for master bedroom) with Hardware of reputed make.

Toilet Doors

Engineered wood / Hard wood / Bison Panel frame with laminated / Bison panel flush shutter (double swing only for master toilet) with Hardware of reputed make.

Utility Door

Engineered wood /

Hard wood / Bison Panel frame with laminated / Bison panel flush shutter with Hardware of reputed make.

Balcony Openings UPVC sliding door with provision for mosquito mesh of reputed make.

Windows

UPVC sliding Window with provision for mosquito mesh of reputed make.

Ventilators

UPVC Ventilator with provision for exhaust fan of reputed make.

Balcony Railing

MS Railing with Enamel Paint

TOILETS

Washbasins of reputed make.

TOILETS

- Washbasins of reputed make
- Wall Mounted EWC of reputed make
- CP Fittings (including the grab bars in the master bedroom toilet) of reputed make flat.

ELECTRICAL

- Concealed copper wiring of reputed make
- Power outlets for air-conditioner in all bedrooms & Living Room/Dining Room
- Power outlets for geysers in all bathroom
- Power plugs in Kitchen for chimney, Refrigerator, Microwave oven, Mixer/Grinder
- Power Plug in Utility: 1 No 15Amp Powersocket for washing machine
- 3-phase supply for each unit & individual meters as per TSSPDCL standards
- Miniature circuit breakers (MCB) & ELCB for each distribution boards.
- Switches and sockets of Legrand / Anchor
- SOS alarm at two specified locations.

CABLE & INTERNET

Provision for Cable line in Drawing/ Living & Master bedroom.

Provision for Internet connection in each

LIFTS

Lifts are provided at suitable locations of reputed make.

Generator

.Power back up of 750W for each flat.
.100% power backup for common areas like corridors, lifts & Club House.

Security/BMS

Solar Fencing on the compound wall.

Boom Barriers for efficient traffic management.

Surveillance cameras at the main security and at the entrance of each block.

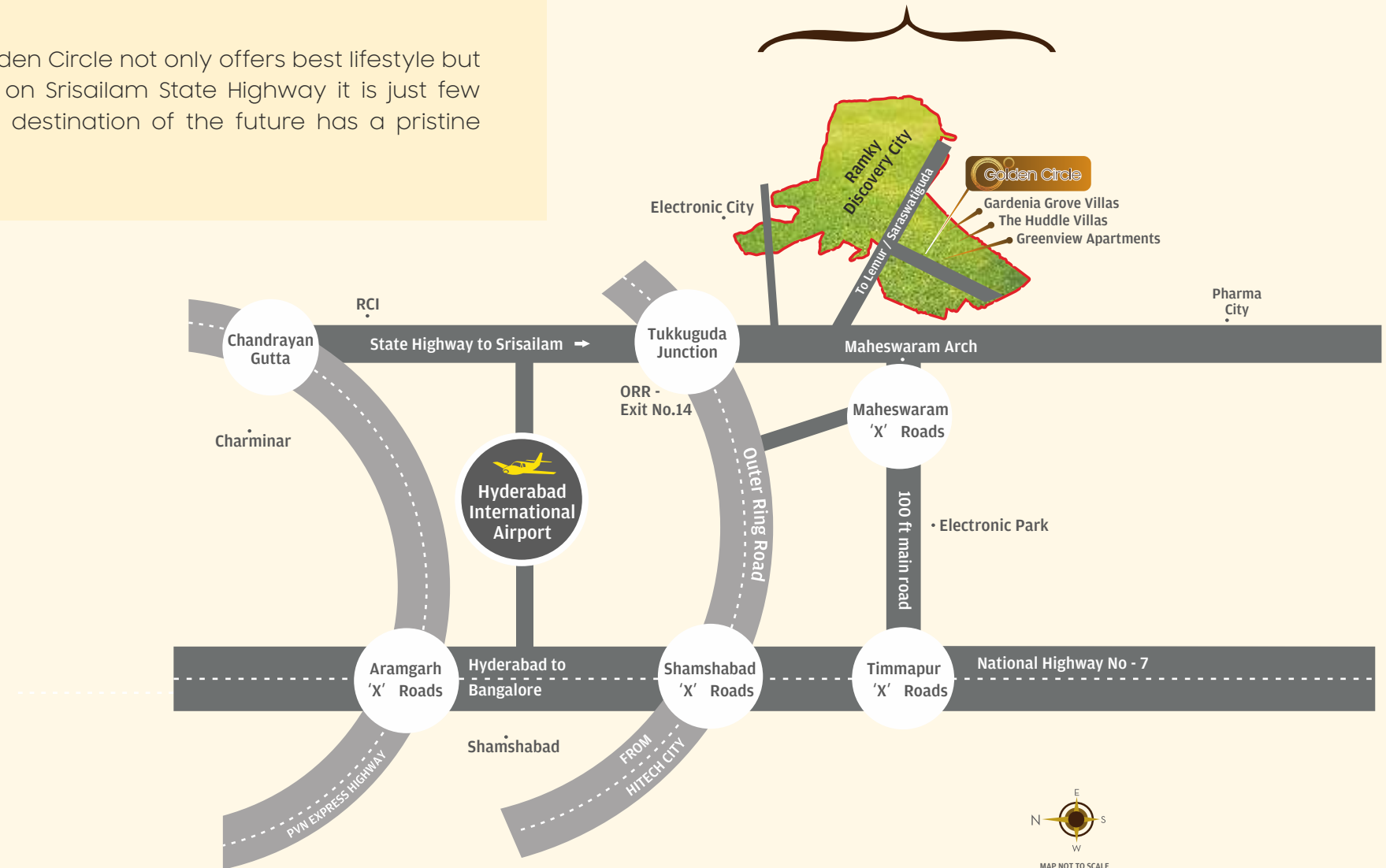
Intercom

Pedestrian Friendly Podium

About Us

Ramky Estates was launched, 25 years ago, with an impactful vision and since then, has witnessed an incredible growth story. Driven by design thinking, Ramky enthalls with spaces that stand the test of time and creates memories. At Ramky Estates & Farms Limited we constantly strive to create spaces for life that reverberate with warmth, comfort and luxury.

Being a part of large Integrated Township, Golden Circle not only offers best lifestyle but also excellent location advantages. Located on Srisailem State Highway it is just few minutes drive to Outer Ring Road, Exit14. This destination of the future has a pristine environment that ensures peaceful living.



IN CLOSE PROXIMITY TO:

- ▶ Rajiv Gandhi International Airport
- ▶ E-City
- ▶ Hardware Park
- ▶ Tata Teleservices
- ▶ Tata Advance Systems
- ▶ TCS
- ▶ HCL
- ▶ Adibatla SEZ
- ▶ GMR Aerospace

RESIDENTIAL

Hyderabad

Ramky Repose
Ramky Pride
Ramky Pearl
Ramky Towers
Ramky Towers - Elite
Ramky CEO Enclave
Ramky One Kosmos
Ramky One Marvel
Ramky One Galaxia
Gardenia Grove Villas
Ramky Tranquillas
TruSpace Aspire

Warangal

Ramky Enclave

Vizag

Ramky One Krystal
Ramky Krystal Villas

Bengaluru

Ramky Utsav
Ramky Samruddhi
Ramky One North
Ramky Serene Woods
Ramky One Karnival

Chennai

RWD Ecopolis
RWD Elysium
RWD Atlantis
RWD Corniche
RWD Chennai 56
RWD Midlands
RWD Grand Corridor
RWD Lemongraz

COMMERCIAL

Hyderabad:

Ramky Selenium | Ramky Towers-Grandiose | Ramky Coral

INTEGRATED TOWNSHIP

Hyderabad: Ramky Discovery City
Warangal: Ramky Enclave

Other Projects at Ramky Discovery City



Gardenia Grove Villas



Green View Apartments



The Huddle



RAMKY INTEGRATED TOWNSHIP LTD.

A subsidiary of Ramky Estates & Farms Limited
www.ramkyestates.com | ISO 9001:2015 Certified
sales@ramky.com

Disclaimer: This is only a visual representation of the area.



RERA # P02400002201 | <http://rera.telangana.gov.in>

☎ 95821 68888
www.ramkydiscoverycity.com
NRI Contact No. 91775 55000

Corporate Office:

9th Floor, Ramky Grandiose, Ramky Towers, Gachibowli, Hyderabad - 500 032.
Ph: +91 40 2301 5000 | sales@ramky.com

*Conditions apply. This presentation is conceptual and not a legal offering for Sale/Agreement.