



AN ISO 9001:2015; 14001:2015; 45001:2018 CERTIFIED COMPANY

**SIGNATUREGLOBAL DEVELOPERS PRIVATE LIMITED | CIN: U70109DL2012PTC241901**

REGISTERED OFFICE: 13TH FLOOR, DR. GOPAL DASS BHAWAN, 28 BARAKHAMBA ROAD, CONNAUGHT PLACE, NEW DELHI-110001

CORPORATE OFFICE: SIGNATURE GLOBAL, GROUND FLOOR, SIGNATURE TOWERS, SOUTH CITY-I, GURUGRAM-122001, HARYANA | [www.signatureglobal.in](http://www.signatureglobal.in)

Disclaimer :

Disclaimer: Promoter urges every applicant to inspect the project site and shall not merely rely upon any architectural impression, plan or sales brochure and, therefore, requests to make personal judgment prior to submitting an application for allotment. Unless otherwise stated, all the images, visuals, materials and information contained herein are purely creative/artistic and may not be actual representations of the product and/or any amenities. Further, the actual design may vary in the fit and finished form, from the one displayed above. Journey time shown, if any, is based upon Google Maps, which may vary as per the traffic at a relevant point of time.

\*Rate mentioned above does not include GST and other statutory charges, if applicable. T & C Apply. 1 sq. mt. = 10.7639 sq. ft.



**SIGNATURE GLOBAL SCO**  
SECTOR 37D, GURUGRAM

**WHERE WORK AND LIFE HARMONIZE**



**SIGNATURE GLOBAL SCO**  
SECTOR 37D, GURUGRAM

---

## A GOLDEN OPPORTUNITY AWAITS YOU

---

Welcome to Signature Global SCO at Sector 37D, Gurugram a unique blend of office and retail under one roof. Located in the heart of Gurugram, spread across 2.3875 acres, it provides a well-connected venue for investing in or opening a business venture.

These are SCO plots for Shop-Cum-Office space where business, shopping, aesthetics and lush landscaping blend in perfect harmony to create that perfect environment you always dreamt of for running your business.

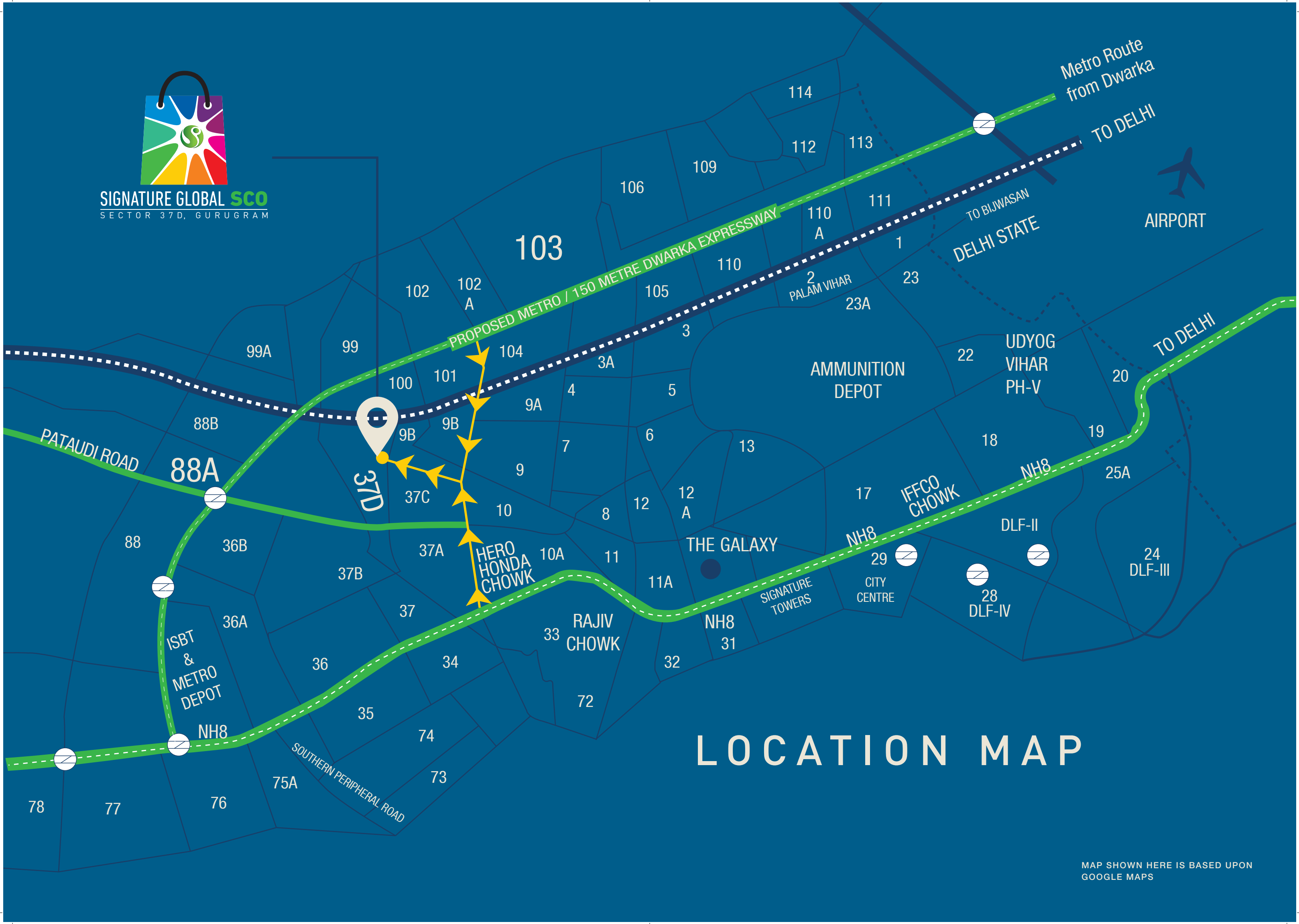








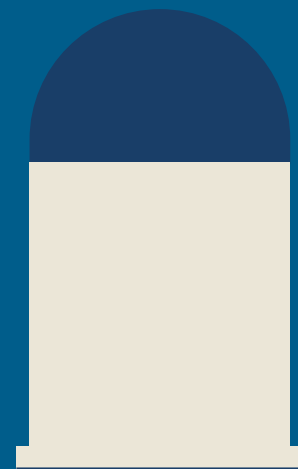
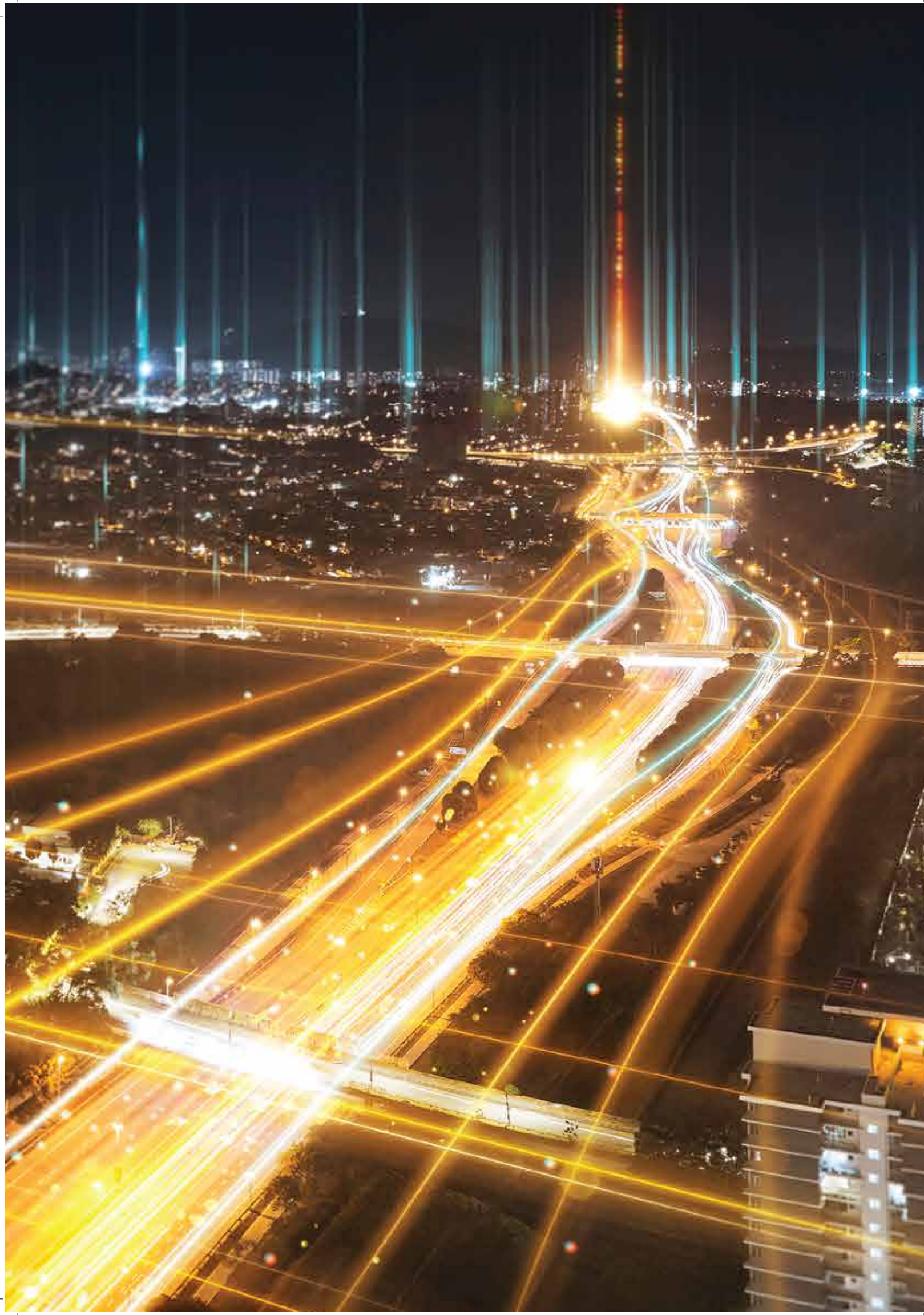
**SIGNATURE GLOBAL SCO**  
SECTOR 37D, GURUGRAM



# LOCATION MAP

MAP SHOWN HERE IS BASED UPON  
GOOGLE MAPS



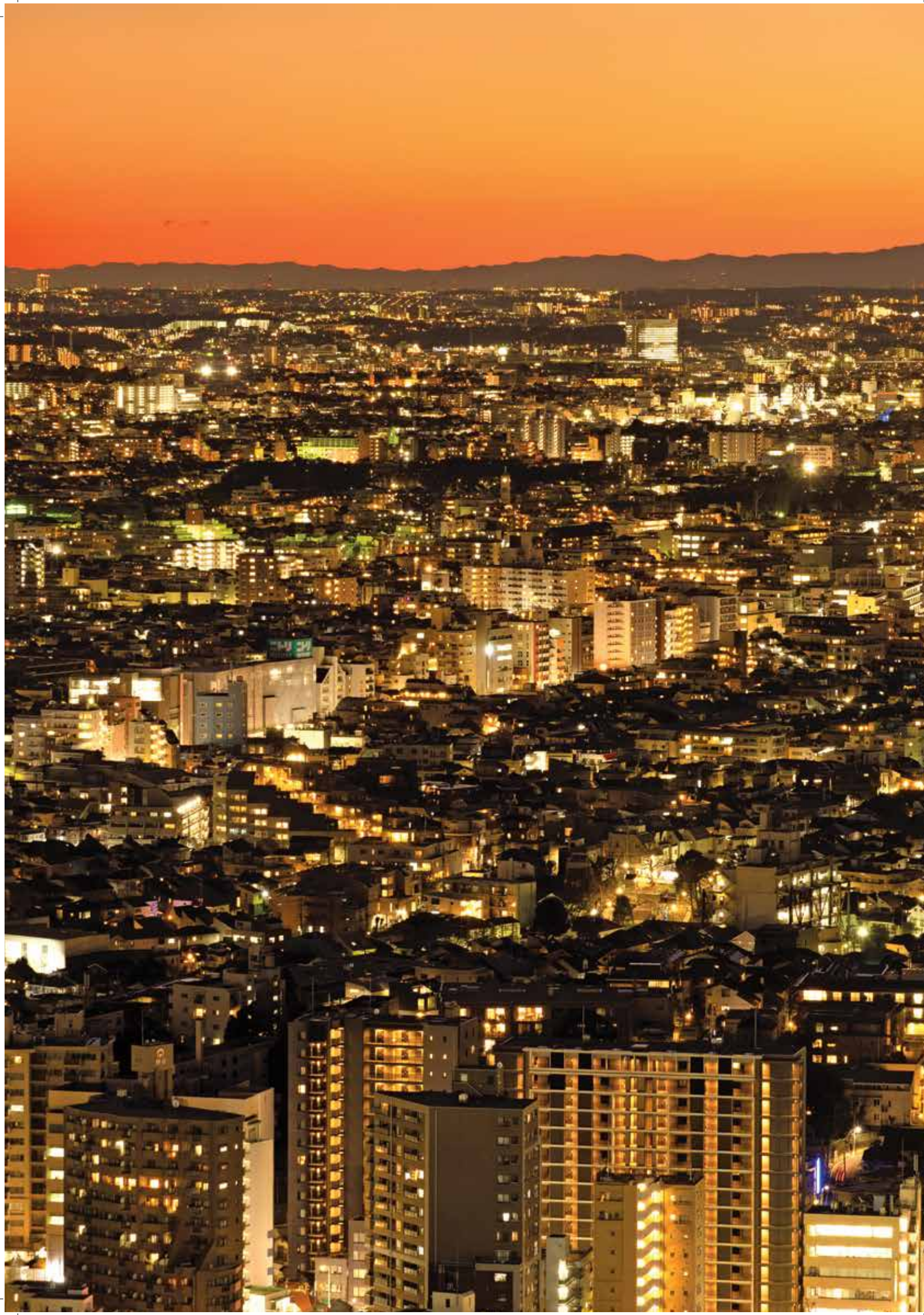


## CONNECTIVITY

Build up your business venture at a commercial hub that is at the epicentre of connectivity in Gurugram.

The SCO is located at a prime spot that is well-connected to Hero Honda Chowk, associating it with one of the most prominent landmarks. What's more, with proximity to Dwarka Expressway, the SCO seamlessly gets connected to Delhi through this 8-lane controlled access expressway. In addition, Pataudi Road is just 1 km away and the proposed metro station is just within walking distance. Thus, in a way, this SCO connects with the essential infrastructure and the prosperous Information Technology (IT) hubs, thereby, positively affecting the chances of any venture or investment.





## RESIDENTIAL NEIGHBOURHOOD

The SCO enjoys a prestigious placement within well-established residential complexes, spreading all around it.

The neighbourhood is dynamically growing that offers an upscale life to its residents, thereby, attracting affluent families and professionals, such as those working in the IT hubs. In the given scenario, this SCO is envisioned to hold a unique position in the neighbourhood, catering to the needs of the affluent residents around it. In addition, Signature Global has many upscale residential projects in this neighbourhood.

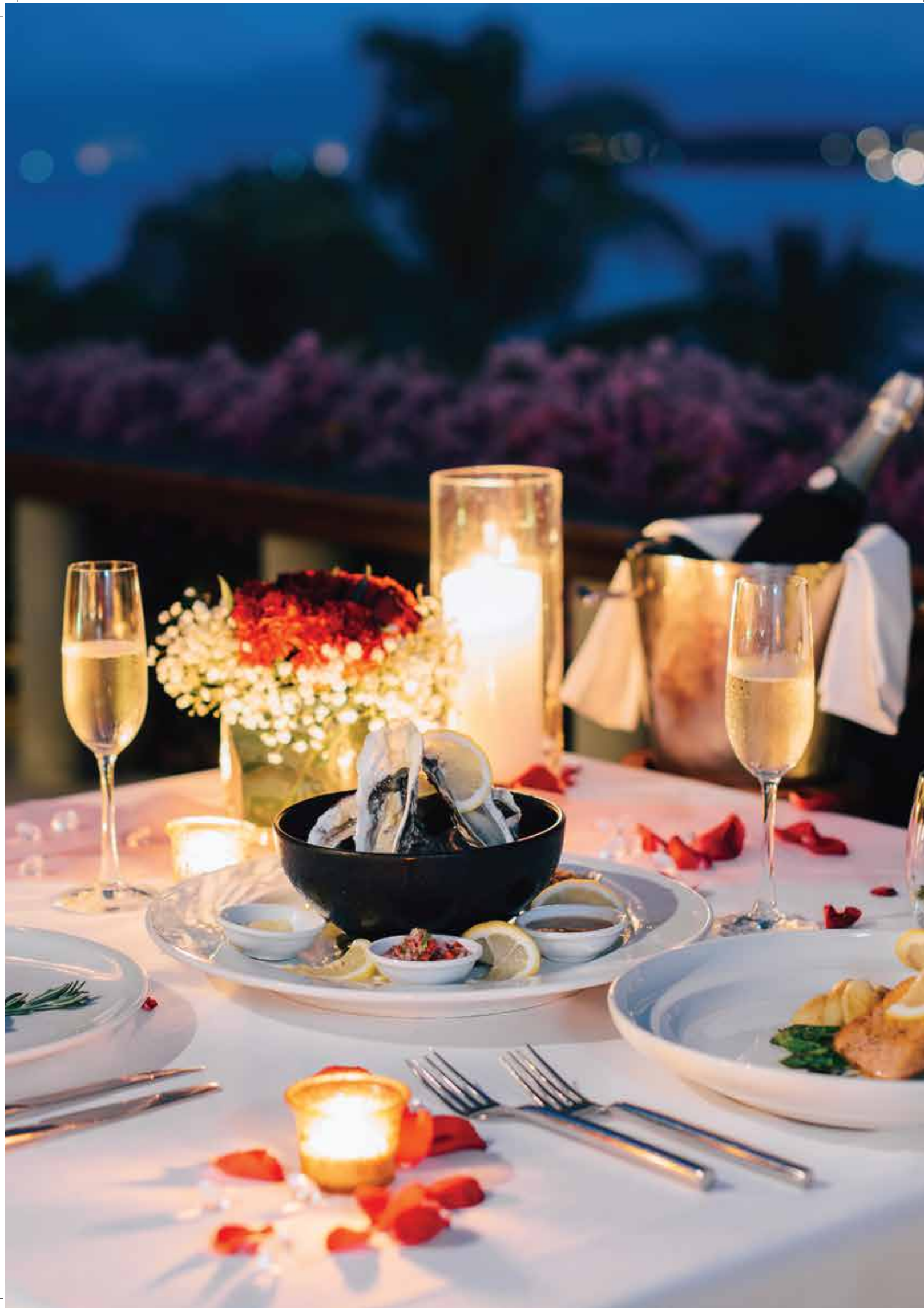




## PRIME LOCATION

Easy accessibility, affluent clientele and business building environment; the SCO offers all these benefits and more due to its prime location. Proximity to major highways and well-established neighbourhood (as mentioned earlier), along with the best infrastructure, make this SCO a good location for any businesses, be it an office or a shop. Thus, this SCO provides an ecosystem that increases the probability of growth and returns.





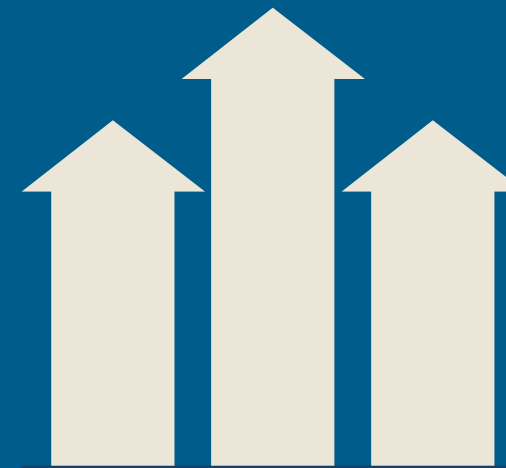
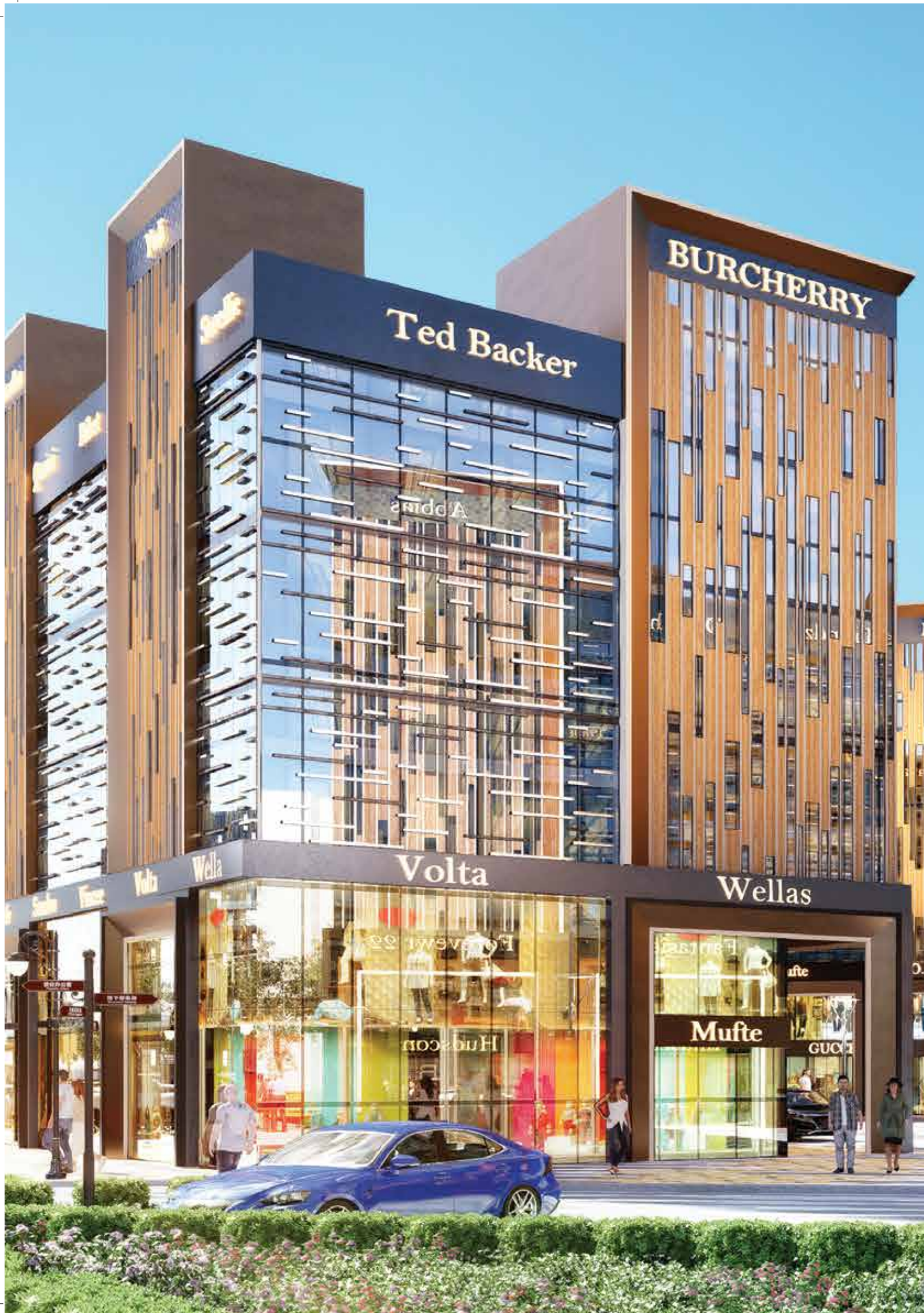
## SOCIAL INFRASTRUCTURE

The prime location and neighbourhood benefits are further supported by a well-established network of social infrastructure.

The neighbourhood is upscale with educated, affluent residents. Moreover, the area boasts of a network of reputed schools, universities, hospitals, restaurants, hotels and recreation hubs. The lush green surroundings further add to the natural aesthetics, besides providing a pristine environment.

All these collate to create that perfect place where you would like to keep your residence and workplace close by.





## VENTURE INTO A SUCCESSFUL INNINGS HERE

In Signature Global SCO at Sector 37D, Gurugram, the excellent connectivity and infrastructure support are further amplified with world-class amenities.

It is a place where offices and shops will complement each other into creating an environment of sustainability and growth.





Be Always at  
The Centre of Excellence.



Prime Location.







BURCHERRY

Missile

DIOR

Ted Baker

Valentino

Wellas

Write Your Own Success Story.

At a Hub of Opportunities.

Kacho

Auriele

Bida

Handch

Catwalk



Find Here Everything You Dreamt of  
for a Successful Life.





Enter a Land of

Progress and Development.







Your Personal Plot.

To Plot Your Future.



Enjoy the Freedom

to Discover Your Niche.

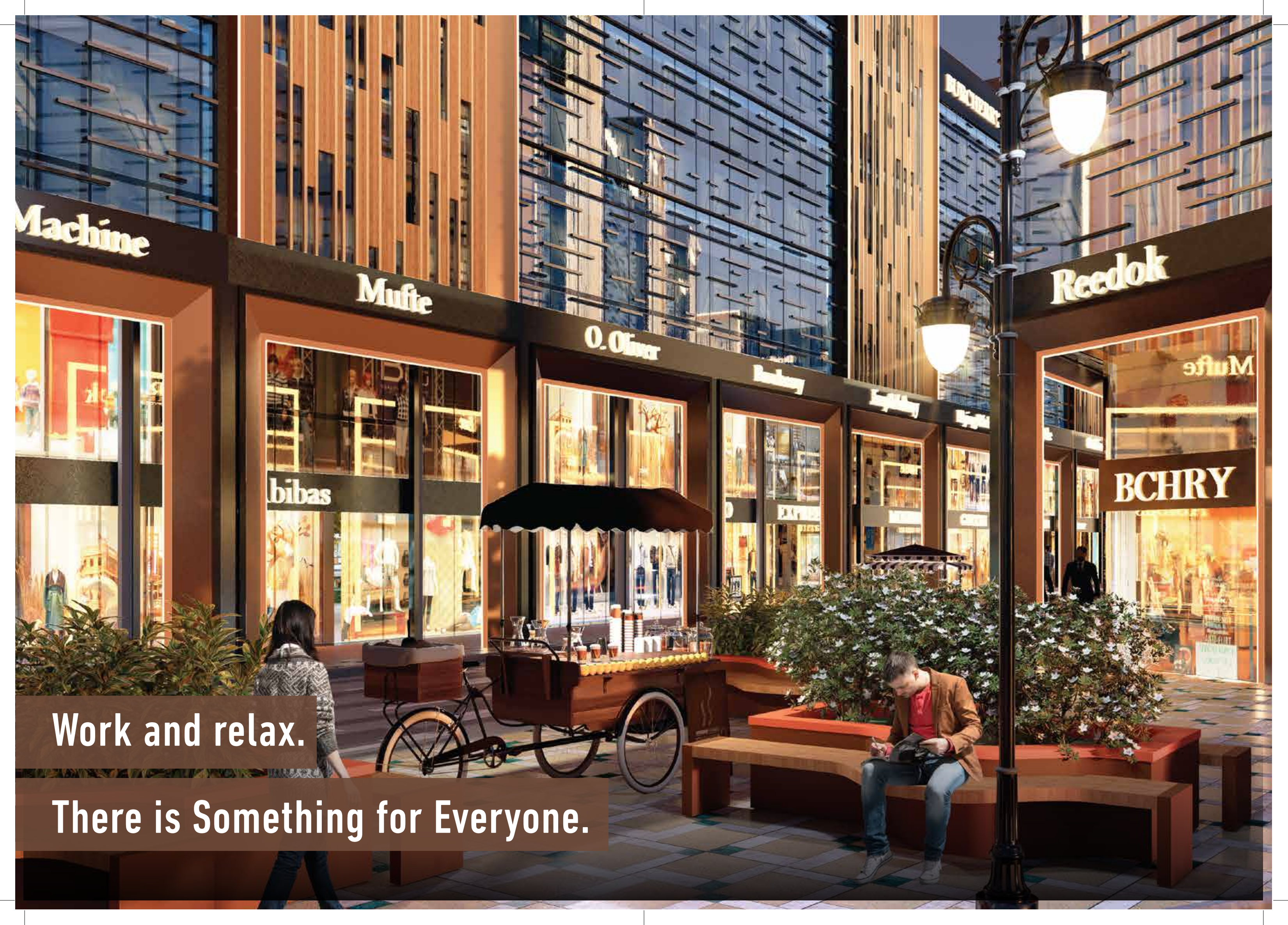




Take the Highway to a  
Successful Venture.







**Work and relax.**

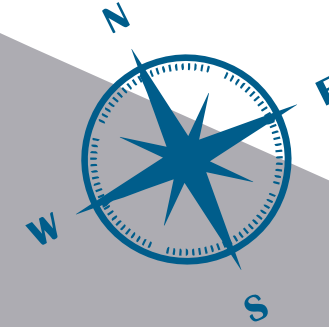
**There is Something for Everyone.**



# SITE PLAN

## LEGEND

TYPE-A  
(6M. X 12M.)



12 MT WIDE ROAD

ESS

12 MT WIDE SERVICE ROAD

60 MT WIDE ROAD

6 M WIDE ROAD

6 M WIDE ROAD

6 M WIDE ROAD

SERVICES/OPEN/PARKING

6 M WIDE ROAD

SERVICES/OPEN/PARKING

TYPE-A1  
P1

TYPE-A2  
P2

TYPE-A3  
P3

TYPE-A4  
P4

TYPE-A5  
P5

TYPE-A6  
P6

TYPE-A7  
P7

TYPE-A8  
P8

TYPE-A9  
P9

TYPE-A31  
P10

M1  
P11

M2  
P12

UT

TYPE-A10  
Q1

TYPE-A11  
Q2

TYPE-A12  
Q3

TYPE-A13  
Q4

TYPE-A14  
Q5

TYPE-A15  
Q6

TYPE-A16  
Q7

TYPE-A17  
Q8

TYPE-A18  
Q9

TYPE-A19  
Q10

TYPE-A20  
Q11

TYPE-A21  
Q12

TYPE-A22  
Q13

TYPE-A23  
Q14

TYPE-A24  
Q15

M5  
Q16

STP

TYPE-A30  
P20

TYPE-A29  
P19

TYPE-A28  
P18

TYPE-A27  
P17

TYPE-A26  
P16

TYPE-A25  
P15

M3  
P14

M4  
P13

WTP

SERVICES/OPEN/PARKING





## ONLY THE VERY BEST FOR YOU

We understand your aspirations and expectations from this SCO. So, we have tried our best to get the best for you; from selecting the location and neighbourhood to infrastructure and amenities.

We have considered every possible aspect to ensure our expertise and experience seamlessly blend into your expectations; building a unique landmark in Gurugram's commercial landscape.





## **PLOTS TO SUIT ALL TASTES.**

Select your plot to fit your business. We have the perfect sizes tailored to your requirement.

## **AMPLE SPACE FOR HASSLE-FREE PARKING.**

Park your vehicles into the dedicated space developed for this purpose. This smart parking provision mitigates the hassle of finding the right spot for your vehicles; so that you may go about the day with a peaceful mind.

## **LUSH LANDSCAPING AT A PROGRESSIVE LANDMARK.**

Enjoy working and shopping in a lush green landscape. The aesthetically sculpted SCO will surely earn the admiration of both business owners and visitors

## **A PERFECT HANGOUT FOR CELEBRATIONS.**

Get together with your family and friends; celebrate the best moments. We have just the right space for creating fond memories.

## **A HAPPENING HUB.**

This SCO will provide the perfect platform for an upscale working life; harmonizing it with shopping, relaxing, eating out and socializing. While you ensure that your ventures progress smoothly, the hub provides you with the environment where you may explore the goodness that life has to offer.

## **BASEMENT + GROUND + 4 FLOORS DEVELOPMENT ALLOWED.**

The floor structure has been designed to uphold the quality of space over the quantity of outlets. With the right mixture of offices and shops, this upscale setup is envisioned to promote a healthy environment for ventures. What's more, we have followed the given design framework strictly with the vision of preserving the hub's aesthetic elegance, spaciousness, lush landscaping and eco-friendliness.



## ABOUT SIGNATURE GLOBAL



SIGNATURE GLOBAL BELIEVES IN THE POLICY OF TRANSPARENCY. THOUGH WE'VE CREATED OUR OWN DISTINCT IDENTITY IN THE FIELD OF REAL ESTATE, WE'RE WORKING MORE PASSIONATELY TO MAINTAIN AND IMPROVE OUR REACH IN THE SECTOR. WE EMPHASIZE ON THE CORE VALUES OF RELIABILITY, RESPONSIBILITY AND GLOBAL STANDARDS WITH REGARD TO THE INTERNATIONAL REAL ESTATE REALM.

THE GROUP HAS OUTLINED ITS VISION FOR 'INDIA OF TOMORROW' WITH A MISSION OF 'HAR PARIVAR EK GHAR' (A HOME FOR EVERY FAMILY). THE COMPANY HAS SUCCESSFULLY LAUNCHED HOUSING PROJECTS, ALL IN THE PRIME LOCATIONS INCLUDING GURUGRAM, SOHNA AND KARNAL IN HARYANA AND COMMERCIAL MALL, FOCUSING ON THE INTEREST OF CUSTOMERS IN VAISHALI, GHAZIABAD, UTTAR PRADESH AND SOHNA, SOUTH OF GURUGRAM.

THE COMPANY HAS SUCCESSFULLY DELIVERED SOLERA, SYNERA, ANDOUR HEIGHTS, GRAND IVA, ORCHARD AVENUE, SOLERA 2, ROSELIA 2, THE SERENAS AND SIGNATURE GLOBAL PARK 2&3 IN GURUGRAM AND OFFERED POSSESSION OF SUNRISE IN KARNAL, MONTHS BEFORE THE EXPECTED TIME OF DELIVERY. EACH RESIDENTIAL PROJECT IS COMPLEMENTED WITH ONE BRANDED RETAIL HUB CHRISTENED AS SIGNUM. THE HALLMARKS OF THESE PROJECTS ARE IDEAL LOCATION, IMPECCABLE QUALITY OF CONSTRUCTION WITH EXCELLENT AMENITIES AT REASONABLE PRICES. THEY ARE UNIQUE IN TERMS OF PLANNING, DESIGN, QUALITY, WORKMANSHIP, TRANSPARENCY, CUSTOMER DELIGHT AND SERVICE. WE HAVE USHERED IN THE BEST GLOBAL PRACTICES OF TRANSPARENCY AND PROFESSIONALISM, WITH 'THINK GLOBAL, ACT LOCAL' APPROACH, DOING PRODUCT DEVELOPMENT AS PER THE NEEDS OF OUR VALUED CONSUMERS.

SIGNATURE GLOBAL WORKS WITH A TEAM OF EXPERIENCED ARCHITECTS, MASTER PLANNERS AND DESIGNERS WHO ARE AMONG THE BEST IN THE INDUSTRY. WE HAVE PARTNERED WITH SEVERAL LEADING NATIONAL AND INTERNATIONAL INSTITUTIONS LIKE IFC – AN ARM OF WORLD BANK, HDFC CAPITAL, ICICI PRUDENTIAL, ETC.

IN THE LAST COUPLE OF YEARS, WE HAVE WON SEVERAL AWARDS FROM PRESTIGIOUS MEDIA HOUSES FOR OUR OUTSTANDING CONTRIBUTION TO THE REAL ESTATE; AS LISTED BELOW:

- 13<sup>TH</sup> ANNUAL ESTATE AWARDS 2021 AFFORDABLE HOUSING PROPERTY OF THE YEAR - (NATIONAL) GOLF GREENS-79
- 13<sup>TH</sup> ANNUAL ESTATE AWARDS 2021 BEST AFFORDABLE / BUDGET HOUSING DEVELOPER OF THE YEAR – RESIDENTIAL (NATIONAL)
- THE 8<sup>TH</sup> IGBC GREEN CHAMPIONSHIP AWARDS UNDER THE CATEGORY OF 'DEVELOPER LEADING THE GREEN AFFORDABLE HOUSING MOVEMENT IN INDIA'
- 13<sup>TH</sup> REALTY+ EXCELLENCE AWARDS 2021, NORTH, DEVELOPER OF THE YEAR – RESIDENTIAL
- 13<sup>TH</sup> REALTY+ EXCELLENCE AWARDS 2021, SUSTAINABLE BUSINESS LEADER OF THE YEAR TO MR. PRADEEP AGGARWAL
- 13<sup>TH</sup> REALTY+ EXCELLENCE AWARDS 2021, AFFORDABLE HOUSING PROJECT OF THE YEAR TO GRAND IVA
- 13<sup>TH</sup> REALTY+ EXCELLENCE AWARDS 2021, PROJECT LAUNCH OF THE YEAR TO SIGNATURE GLOBAL CITY 37D
- INDIA'S MOST SUSTAINABLE COMPANIES PUBLISHED IN THE 2ND EDITION OF BW BUSINESSWORLD IN ASSOCIATION WITH SUSTAIN LABS PARIS
- REAL ESTATE - AFFORDABLE HOUSING DEVELOPER OF THE YEAR BY TIMES BUSINESS AWARDS NORTH 2022

RECENTLY, WE HAVE BEEN HONOURED BY DTCP AND HARERA, PANCHKULA AND GURUGRAM, WITH THE FOLLOWING AWARDS:

- FALICITATED FOR DELIVERY OF AFFORDABLE HOUSING PROJECT WITHIN A THREE-YEAR PERIOD, AFTER OBTAINING OCCUPANCY CERTIFICATE; PRESENTED BY SH. MANOHAR LAL KHATTAR, HON'BLE CHIEF MINISTER OF HARYANA
- FALICITATED FOR COMPLETION OF DDJAY PROJECT WITHIN A RECORD TIME FRAME OF LESS THAN ONE AND A HALF YEARS; PRESENTED BY SH. MANOHAR LAL KHATTAR, HON'BLE CHIEF MINISTER OF HARYANA

WE HAVE ALSO GOT ISO 9001:2015; 14001:2015; 45001:2018 CERTIFICATIONS.